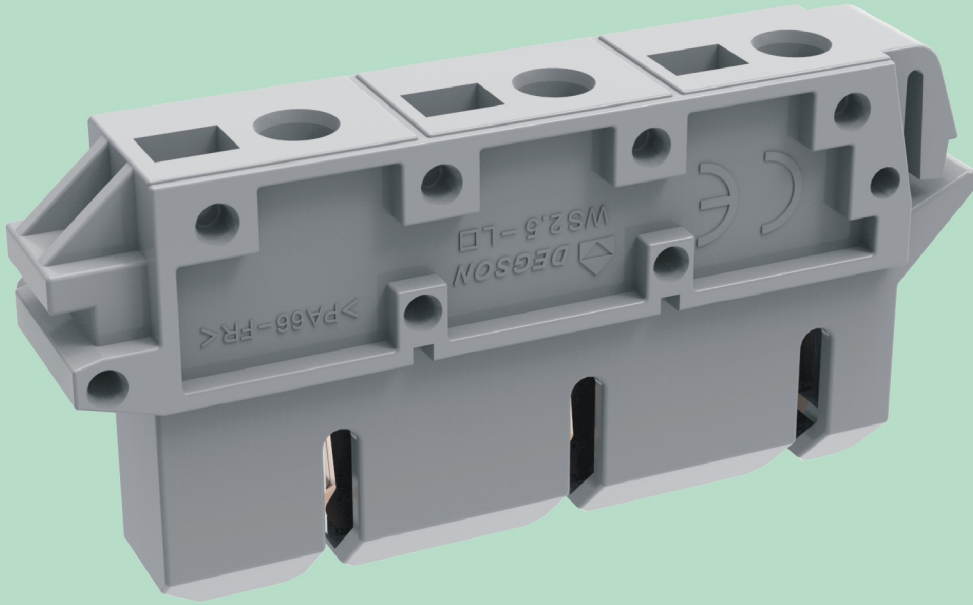
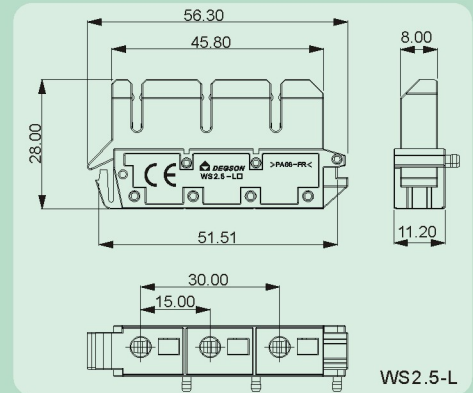


### WS2.5-L



- 笼式弹簧，接线方便。
- 与抽屉式端子相配套，可插拔。
- 软硬导线均可使用，最大线径：2.5mm<sup>2</sup>。
- L类产品带五金件，与金属固定。LG类产品不带五金件，与塑料隔板固定。
- Cage spring, convenient wiring.
- Matching with drawer type terminal, pluggable.
- Both soft and hard wires can be used, the maximum wire range: 2.5mm<sup>2</sup>.
- L products with hardware, fixed with metal, LG products do not have hardware, fixed with plastic partitions.



### 技术参数 Technical data

APPROVAL: CE

型号 Model	线径 Wire range (AWG/mm <sup>2</sup> )	线数 Poles	IEC60947技术参数 (IEC60947 data sheet)		UL1059技术参数 (UL1059data sheet)	
			电压(V) Rated voltage	电流(A) Rated current	电压(V) Rated voltage	电流(A) Rated current
WS2.5-L	28-14/0.2-2.5	01P	660	24	-	-

### 应用行业 Application

电力电气等行业。  
Electric power etc.



### 产品包装方式 Packing

Product model	Pcs./Pkt.
WS2.5-L	50

### 附件 Accessory



### 型号对照 Cross reference

DEGSON	同行1/Competitor1	同行2/Competitor2
WS2.5-L	-	-

### 产品订货 How to order

WS2.5-L	-	0	1	P	-	1	1	-	0	0	A(H)
Series NO.		NO. of pole				通用色 General Color			Standard		
		1	2			1	Grey	PANTONE 43 0C	DEGSON 01		