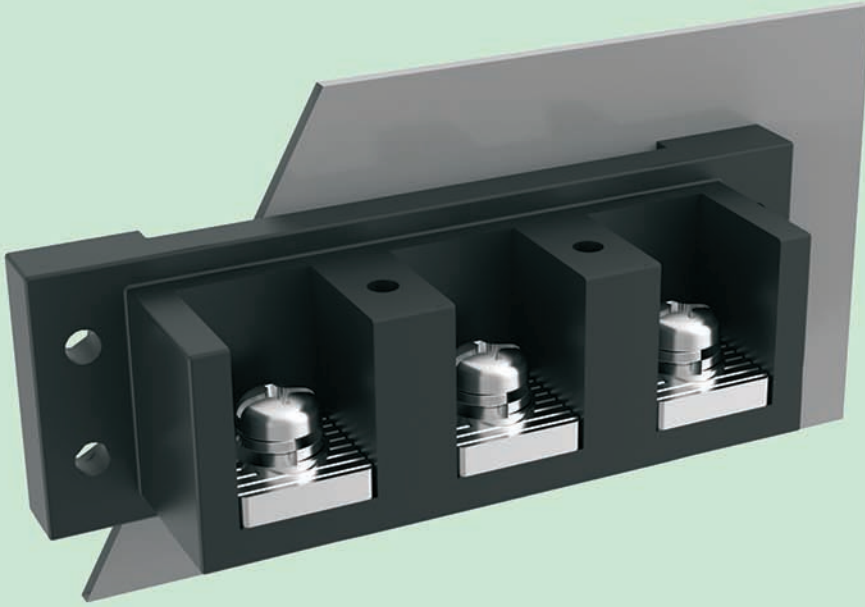
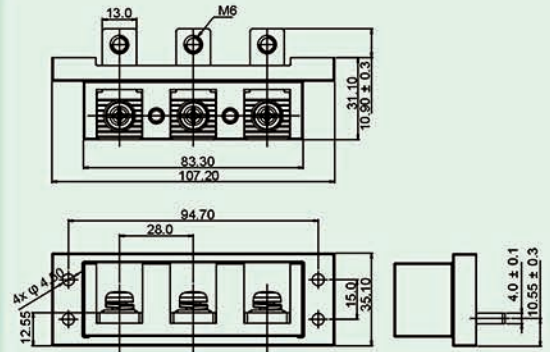


DG32-A



- 栅栏式结构, 可用OT/DT/U型接头连接提高稳定性。
- 可固定于壳体面板。
- 最大电流: 120A

- Barrier structure, OT/DT/U terminal is optional for connection, stability improved.
- Mounting on the panel.
- Maximum current: 120A



技术参数 Technical data

APPROVAL: CE

型号 Model	线径 Wire range (AWG/mm ²)	线数 Poles	IEC60947技术参数 (IEC60947 data sheet)		UL1059技术参数 (UL1059 data sheet)	
			电压(V) Rated voltage	电流(A) Rated current	电压(V) Rated voltage	电流(A) Rated current
DG32-A	20-4	03P	-	-	600	120

应用行业 Application

工业自动化, 新能源, 电梯, 电力电气等行业。

industrial automation, new energy, elevator, electric power.



产品包装方式 Packing

Product model	Pcs./Pkt.
DG32-A	25

型号对照 Cross reference

DEGSON	同行1/Competitor1	同行2/Competitor2
DG32-A	-	-

产品订货 How to order

DG32-A	-	0	3	P	-	1	3	-	0	0	A(H)
Series NO.			NO. of pole						Standard		
									1	2	3
									Single pitch	Double pitch	通用色 General Color
									Black	PANTONE 419C	DEGSON 03