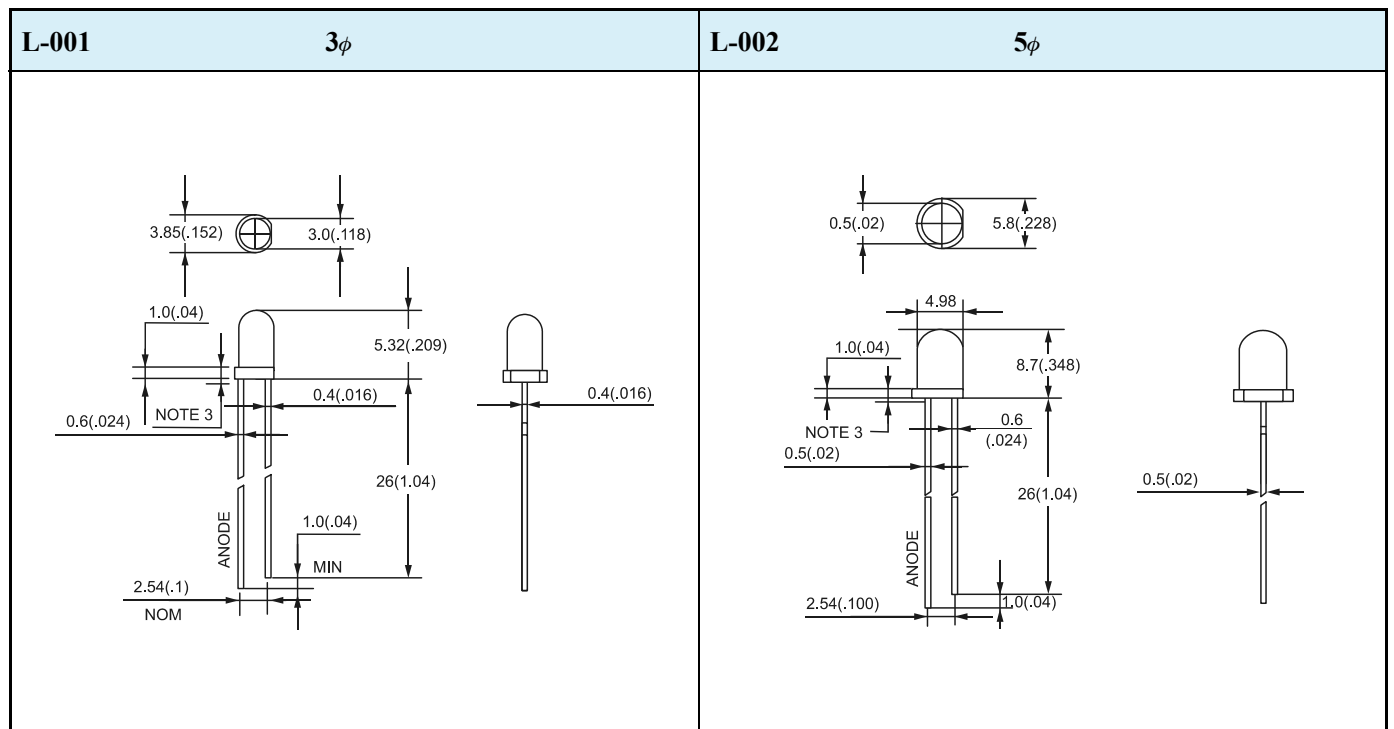


# ULTRA BRIGHT LED LAMPS (ROUND TYPES)

Package	Part No.	Chip		Lens Appearance	Absolute Maximum Ratings				Electro-optical Data (At 20mA)			Viewing Angle $2\theta$ 1/2 (deg)	Drawing No.
		Material/Emitted Color	Peak Wave Length $\lambda_p$ (nm)		$\Delta I$ (nm)	Pd (mw)	If (mA)	Peak (mA)	Vf (V)		Iv (mcd)		
									Typ	Max	Typ.		
3 $\phi$	1L0341V22D0CA201	AlGaInP/Red	625	Water Clear	25	70	30	100	1.9	2.4	1600	25	L-001
	1L034FG42A0CA201	AlGaInP/Green	569		25	70	30	100	1.9	2.7	1200	30	
	1L034XG72E0CA201	AlGaInP/Green	525		30	110	30	100	3.2	3.8	15000	20	
	1L0341Y22C0CA201	AlGaInP/Yellow	590		25	80	30	100	2.0	2.7	2000	15	
	1L0341A21A0CA201	AlGaInP/Amber	605		25	80	30	100	2.0	2.7	2000	20	
	1L034FB12E0CA201	InGaIn/Blue	466		30	110	30	100	3.2	3.8	2600	25	
5 $\phi$	1L0534V22D0CA203	AlGaInP/Red	625		25	80	30	100	2.0	2.7	2600	15	L-002
	1L0532V24I0CR201	AlGaInP/Red	625		25	80	30	100	1.9	2.7	5000	30	
	1L0534G42A0CA202	AlGaInP/Green	567		30	80	30	100	2.1	2.7	2100	15	
	1L0545G72E0CA204	AlGaInP/Green	525		30	110	30	100	3.0	3.8	8200	45	
	1L0531A21A0CA201	AlGaInP/Amber	605		25	80	30	100	2.0	2.7	2300	15	
	1L0545B12E0CA201	InGaIn/Blue	465		30	110	30	100	3.2	3.8	5200	15	



- Notes: 1. All dimensions are in millimeters (inches).  
 2. Tolerance is  $\pm 0.25\text{mm}$  (.010)mm unless otherwise noted.  
 3. Protruded resin under flange is 1.0mm (.04) max.