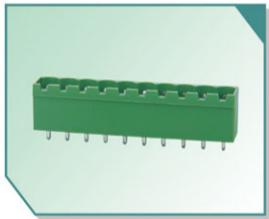


XY2500V-P(7.5)

XY2500V-Q(7.62)

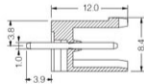
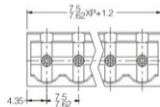
Poles: Any poles(2-24P)

Pitch: 7.5mm 7.62mm



Voltage Rating: 300V
Current Rating: 12A
Housing: PA66(UL 94V-0)
Solder Pin: Brass, Tin Plated

额定电压: 300V
额定电流: 12A
塑件: 尼龙66 (UL 94V-0)
触点材料: 黄铜, 镀锡

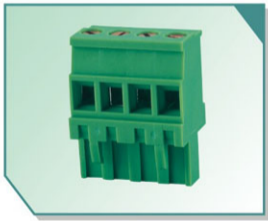


XY2500F-P(7.5)

XY2500F-Q(7.62)

Poles:Any poles(2-24P)

Pitch:7.5mm 7.62mm



Voltage Rating: 300V

Current Rating: 12A

Wire range: 18-12AWG 2.5mm²

Housing: PA66(UL 94V-0)

Wire Cage: Brass(Nickel Plated)

Clamp: Phosphor Bronze, Tin Plated

Screw: M3.0, Steel(Q235), Zinc Plated

Torque: 0.5N.m

额定电压: 300V

额定电流: 12A

使用线径: 18-12AWG 2.5mm²

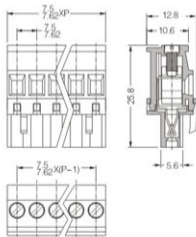
塑件: 尼龙66 (UL 94V-0)

接触保护材料: 黄铜, 镀镍

弹片(触点)材料: 磷青铜, 镀锡

螺丝材料: M3.0, Q235钢, 镀锌

扭矩: 0.5N.m

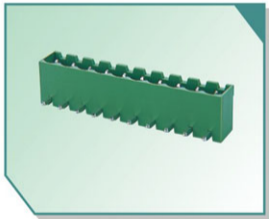


XY2500R-P(7.5)

XY2500R-Q(7.62)

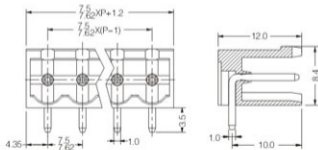
Poles:Any poles(2-24P)

Pitch:7.5mm 7.62mm



Voltage Rating: 300V
Current Rating: 12A
Housing: PA66(UL 94V-0)
Solder Pin: Brass, Tin Plated

额定电压：300V
额定电流：12A
塑件：尼龙66 (UL 94V-0)
触点材料：黄铜，镀锡

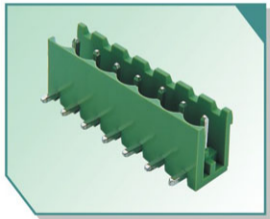


XY2500R-M(7.5)

XY2500R-N(7.62)

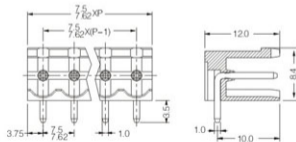
Poles: Any poles (2-24P)

Pitch: 7.5mm 7.62mm



Voltage Rating: 300V
Current Rating: 12A
Housing: PA66(UL 94V-0)
Solder Pin: Brass, Tin Plated

额定电压: 300V
额定电流: 12A
塑件: 尼龙66 (UL 94V-0)
触点材料: 黄铜, 镀锡

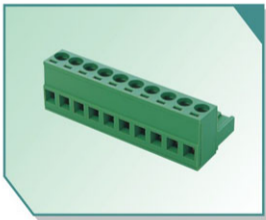


XY2500F-M(7.5)

XY2500F-N(7.62)

Poles: Any poles (2-24P)

Pitch: 7.5mm 7.62mm



Voltage Rating: 300V

Current Rating: 12A

Wire range: 18-12AWG 2.5mm²

Housing: PA66(UL 94V-0)

Wire Cage: Brass(Nickel Plated) or
Steel(Zinc plated)

Clamp: Phosphor Bronze, Tin Plated

Screw: M2.5, Steel(Q235), Zinc Plated

Torque: 0.4N.m

额定电压: 300V

额定电流: 12A

使用线径: 18-12AWG 2.5mm²

塑件: 尼龙66 (UL 94V-0)

接触保护材料: 黄铜, 镀镍
或铁, 镀锌

弹片(触点)材料: 磷青铜, 镀锡

螺丝材料: M2.5, Q235钢, 镀锌

扭矩: 0.4N.m

