



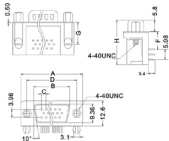
108 series

D-SUB H.D.RIGHT ANGLE TYPE (3.08mm 9.4mm)

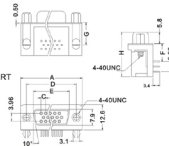
Position	A	B	C	D	E
15	31.04	17.78	2.29	24.99	16.33
26	39.24	26.15	2.29	33.32	24.66
44	53.04	39.94	2.29	47.04	38.38
62	69.62	56.56	2.41	63.50	54.84

	F	G	H
B	3.08	5.08	14.45
C	9.4	10.89	22.2

[MALE]



[FEMALE]



Specifications:

Contact Resistance: 30mΩ max.at DC 100 mA
 Insulator Resistance: 1000MΩ min.at DC 500V
 Current Rating: 3AMP

Dielectric Withstanding

Voltage: AC 1000V For 1 minute
 Operating Temperature: -55° C--+105° C
 Contact: Brass or Phosphor Bronze
 Housing: PBT &30% Glass Fiber(UL 94V-0)

How To Order

108 - 15 S T K A B

SERIES NO	1	2	3	4	5	6	7	
NO.OF PINS:								B-3.08mm FOOTPRINT C-9.4mm FOOTPRINT
CONTACT TYPE								MOUNTING TYPE: A-A TYPE, WITH JACK SCREW & BOARD LOCKS K-K TYPE, WITH 4-40 INSERT & BOARD LOCKS
SHELL PLATED:								OPION ON INSULATOR: B-BLUE K-BLACK W-WHITE