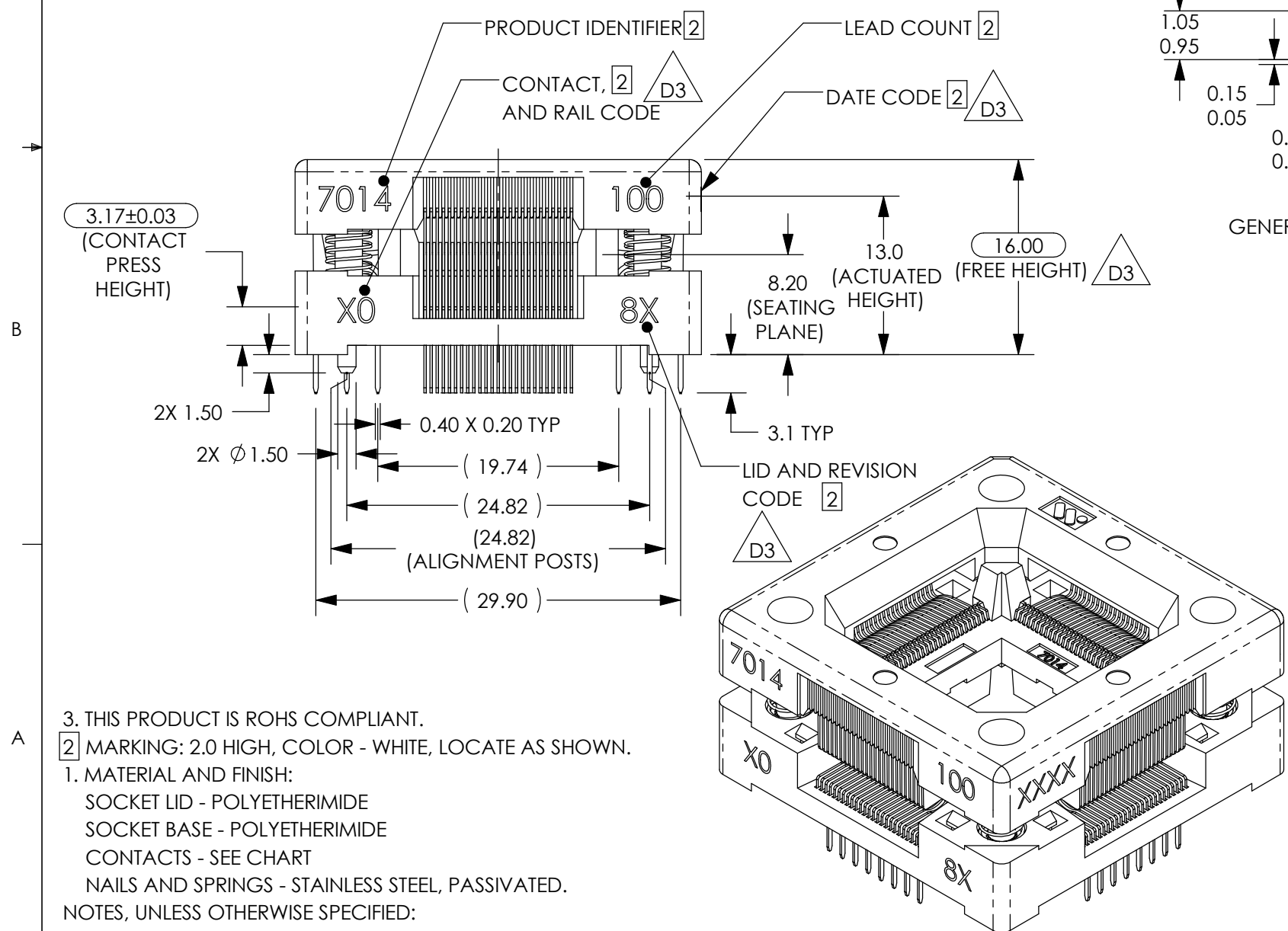
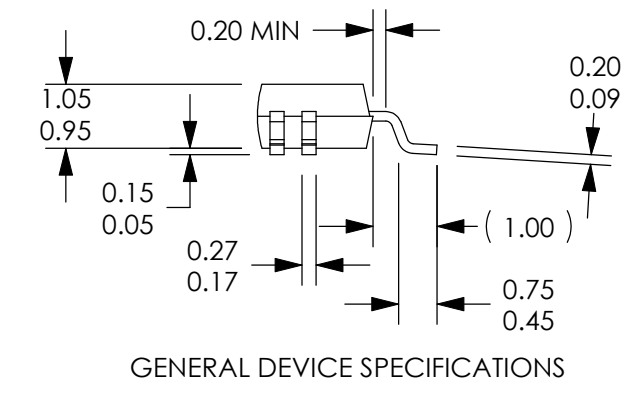
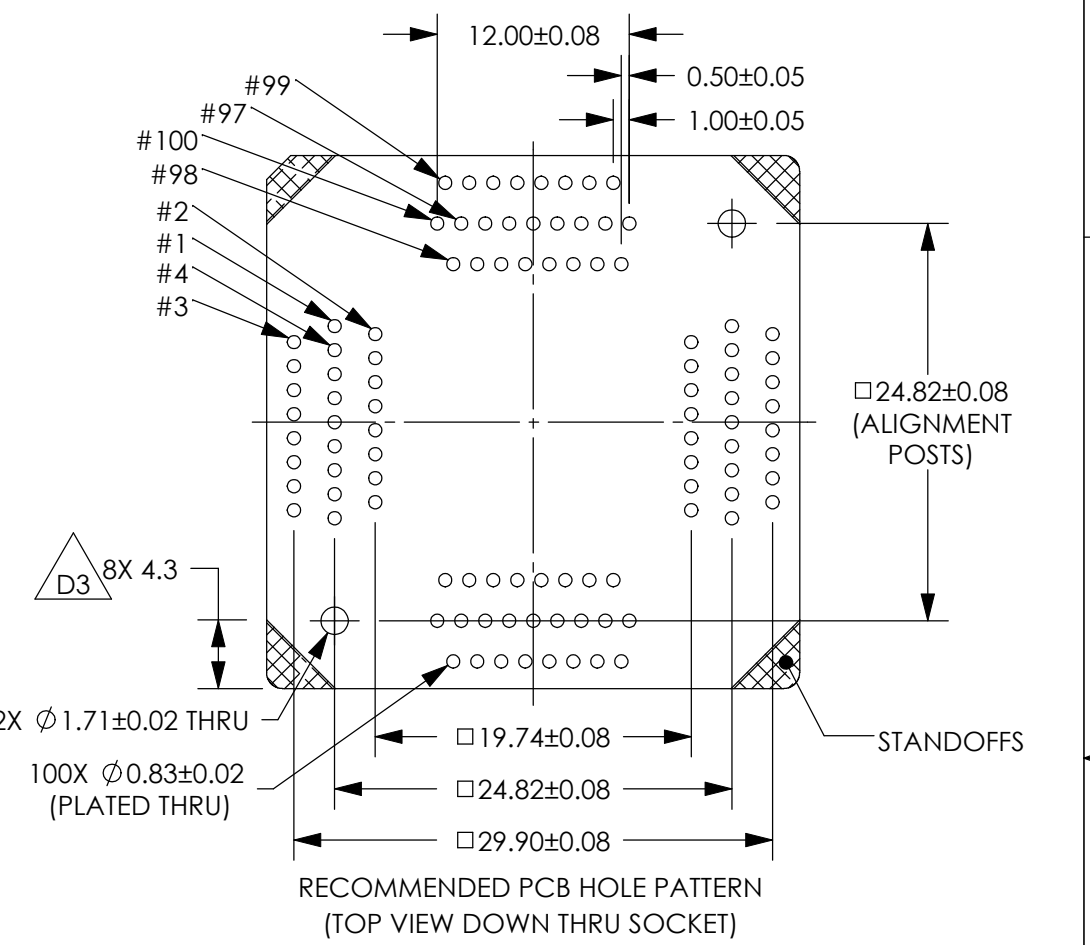


REVISIONS				
REV	ECN	DESCRIPTION	DATE	BY
D1	06-0360	UPDATED VIEWS	6/14/2006	SH
D2	08-0455	REDRAWN TO CURRENT STANDARDS.	7/24/2008	PH
D3	JT012938	REMOVED 3 & 7 FROM CONTACT OPTIONS; UPDATED DRAWING TITLE BLOCK; REMOVED NAIL PRESS HEIGHT DIM. AND CHANGED FREE HEIGHT TO CRITICAL DIM.; UPDATED MARKING TEXT LOCATION; UPDATED ITEM 1 FROM 005-027-00 TO 2800632; ADDED 8X 4.3 DIM.;	6/4/2009	CC



**7014-100 - X - 08 X**  
 SOCKET ASSEMBLY REVISION  
 CONTACT MATERIAL & PLATING  
 0 = BeCu w/ Au (Overall) (SPECIAL ORDER)  
 6 = BeCu w/ Au-Au FLASH

3. THIS PRODUCT IS ROHS COMPLIANT.  
 2 MARKING: 2.0 HIGH, COLOR - WHITE, LOCATE AS SHOWN.  
 1. MATERIAL AND FINISH:  
 SOCKET LID - POLYETHERIMIDE  
 SOCKET BASE - POLYETHERIMIDE  
 CONTACTS - SEE CHART  
 NAILS AND SPRINGS - STAINLESS STEEL, PASSIVATED.  
 NOTES, UNLESS OTHERWISE SPECIFIED:

ITEM NO.	QTY.	PART NUMBER	DESCRIPTION
5	1	001-493-10	SOCKET LID
4	1	001-492-10	TQFP SOCKET BASE (14mm, 0.50C/C, 100LD)
3	100	002-084-XX	CONTACT, STANDARD ACTUATION FORCE
2	4	006-027-00	CORNER NAIL
1	4	2800632	SPRING, COMP., .150IN. O.D., .200IN. LEN.

LEGEND		INTERPRET DRAWING IN ACCORDANCE WITH ASME Y14.5M-1994	MATERIAL FINISH		WELLS-CTI
○	CRITICAL		REFERENCE	DRAWN PH	
2	TOTAL NO. OF ○ USED	TOLERANCES	PROJECT / SERIES	CHECKED TL	DATE 6/8/06
PROJECTION		X.X ± 0.2 X.XX ± 0.08 X.XXX ± 0.025 ANGLE ± 1°	7014	ENGINEER PH	DATE 6/8/06
SIZE B		CONFIDENTIAL/PROPRIETARY THIS DOCUMENT CONTAINS PROPRIETARY INFORMATION OF WELLS-CTI. NOT TO BE USED, COPIED OR DISCLOSED WITHOUT PERMISSION. ALL RIGHTS RESERVED.	QUALITY	MFG. ENGR.	DATE

TITLE		DRAWING NUMBER		REV.
QFP SOCKET ASSEMBLY (14MM, 100LD, 0.50MM C/C)		7014-100-X-08		D3
SCALE	2:1	UNITS:	mm [in]	
DO NOT SCALE		SHEET	1 OF 1	