



TL32 Series

- Rated voltage: 250V
- Frequency – 50/60 Hz
- Inductance tolerance: $\pm 20\%$
- Insulation material class B (130°C)
- Ambient temperature (ta) - 40°C
- Potted under vacuum
- Climatic classification: 25/085/21-C ACC. To IEC60068-1
- Custom-made PFC choke are available upon request

CIRCUIT DIAGRAM

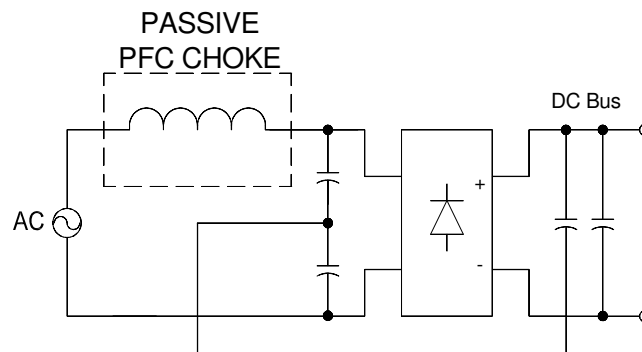
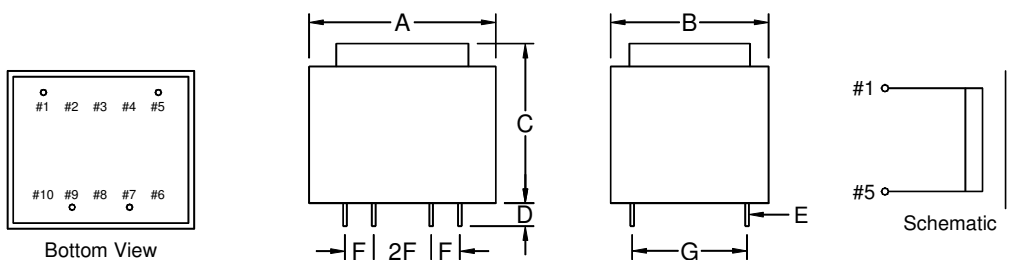


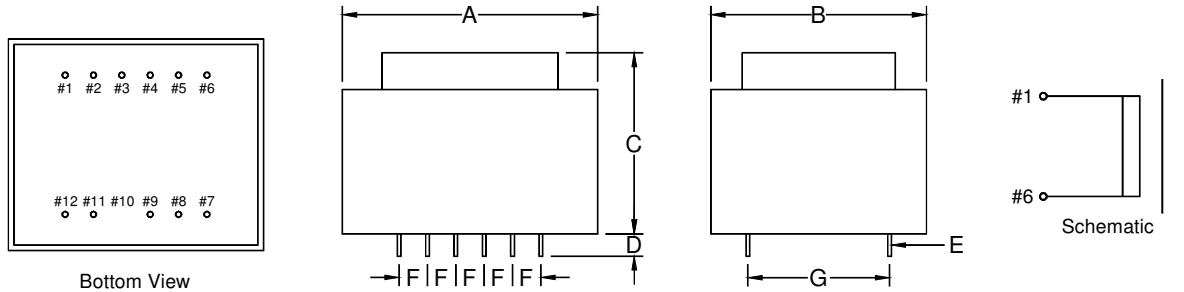
Diagram 1



Product Series	Dimension (mm)							Weight (g)
	A	B	C	D	E	F	G	
TL32A	32.3	27.3	22.8	4.0	SQ0.64	5.0	20.0	80
TL32B	32.3	27.3	27.8	4.0	SQ0.64	5.0	20.0	100
TL32C	32.3	27.3	29.8	4.0	SQ0.64	5.0	20.0	115
TL32D	32.3	27.3	34.3	4.0	SQ0.64	5.0	20.0	135
TL32E	41.0	35.0	28.0	4.0	SQ0.64	5.0	25.0	145
TL32F	41.0	35.0	30.8	4.0	SQ0.64	5.0	25.0	170
Tolerance	± 0.5	± 0.5	± 0.5	± 1.0	± 0.1	± 0.2	± 0.5	approx.

Note: Pins #2, #3, #4, #6, #8, #10 are omitted for standard parts.

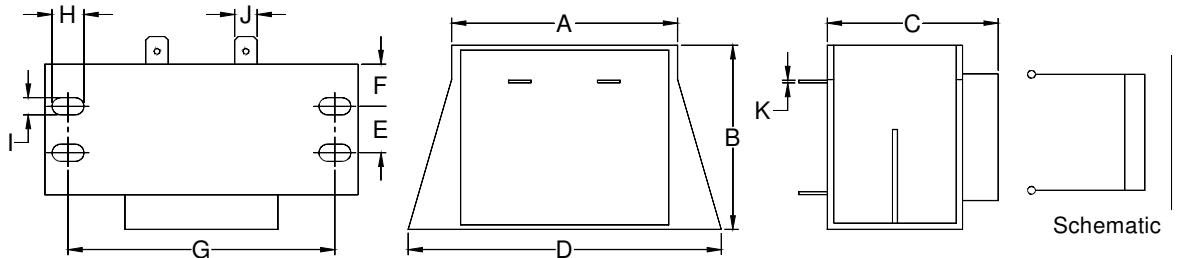
Diagram 2



Product Series	Dimension (mm)							Weight (g)
	A	B	C	D	E	F	G	
TL32G	44.0	37.0	31.5	4.0	SQ0.64	5.0	25.0	190
TL32H	44.0	37.0	38.2	4.0	SQ0.64	5.0	25.0	240
TL32J	51.0	43.0	34.5	4.0	SQ0.64	5.0	27.5	290
TL32K	51.0	43.0	38.5	4.0	SQ0.64	5.0	27.5	330
Tolerance	±1.0	±1.0	±1.0	±1.0	±0.1	±0.2	±0.5	approx.

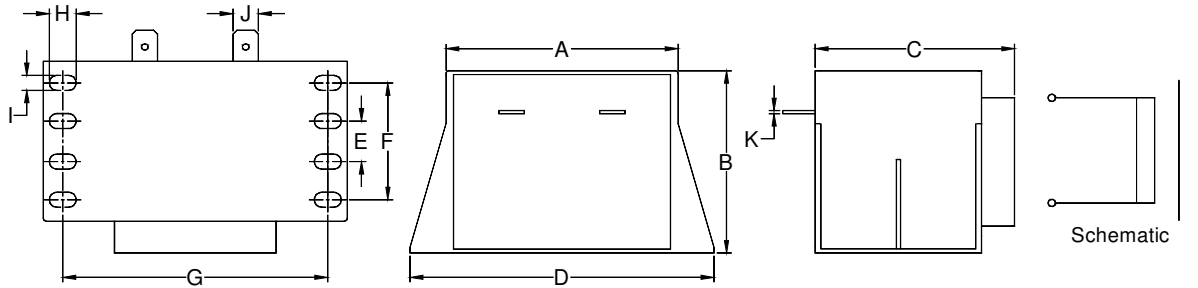
Note: Pin #10 is omitted for standard parts.

Diagram 3 (Faston Tab Style 1)



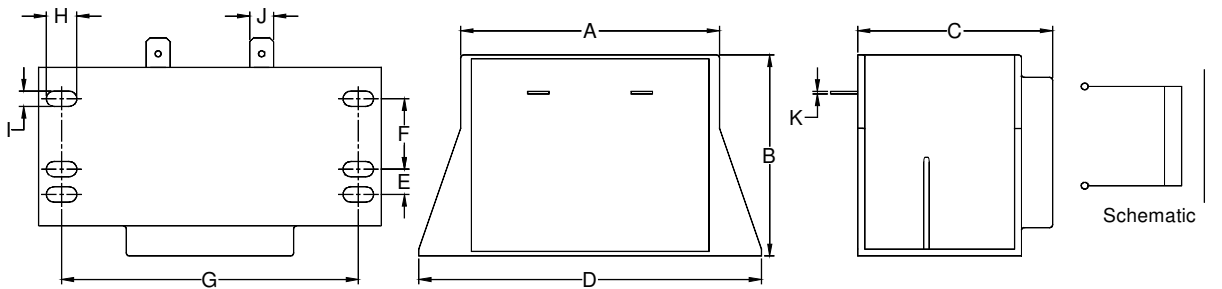
Product Series	Dimension (mm)											Weight (g)
	A	B	C	D	E	F	G	H	I	J	K	
TL32J (FT)	51.0	42.8	35.5	75.0	12.0	8.5	62.0	6.7	3.5	6.3	0.8	290
TL32K (FT)	51.0	42.8	39.5	75.0	12.0	8.5	62.0	6.7	3.5	6.3	0.8	330
TL32L (FT)	57.5	48.5	42.8	82.5	11.0	10.5	68.0	6.7	3.5	6.3	0.8	440
TL32M (FT)	63.5	53.5	45.5	88.0	13.5	11.5	75.0	9.0	5.0	6.3	0.8	610
TL32P (FT)	71.8	58.5	48.8	94.0	13.0	12.7	82.0	8.3	5.0	6.3	0.8	810
Tolerance	±1.0	±1.0	±1.0	±1.0	±1.0	typ.	±1.0	±0.5	±0.2	±0.2	±0.1	approx.

Diagram 4 (Faston Tab Style 2)



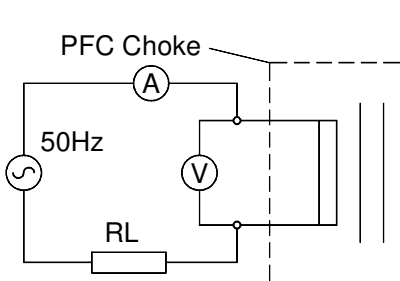
Product Series	Dimension (mm)											Weight (g)
	A	B	C	D	E	F	G	H	I	J	K	
TL32R (FT)	71.8	58.5	61.5	94.0	13.0	37.5	82.0	8.3	5.0	6.3	0.8	1120
Tolerance	±1.0	±1.0	±1.0	±1.0	±1.0	±1.0	±1.0	±0.5	±0.2	±0.2	±0.1	approx.

Diagram 5 (Faston Tab Style 3)



Product Series	Dimension (mm)											Weight (g)
	A	B	C	D	E	F	G	H	I	J	K	
TL32T (FT)	85.0	68.2	64.0	112.5	8.6	23.9	97.5	10.0	5.2	6.3	0.8	1520
Tolerance	±1.0	±1.0	±1.0	±1.0	±1.0	±1.0	±1.0	±0.5	±0.2	±0.2	±0.1	approx.

Inductance Testing Method:



$$\text{Impedance } X_L = \frac{V}{A} \text{ (* Coil Resistance be ignored)}$$

$$\text{Inductance } L = \frac{X_L}{2\pi f} \text{ (* frequency } f = 50\text{Hz)}$$

eg. TL32A-025-152 rated current is 2.5A.

The measured voltage at rated current is approximate 1.177V.

Therefore X_L at rated current is approximate 0.471ohm.

also the inductance is approximate 1.5mH

Part Number	Inductance (mH) (@25°C 50Hz)	Rated Current (A)	Part Number	Inductance (mH) (@25°C 50Hz)	Rated Current (A)
TL32A-005-473	47.0	0.5	TL32J-020-453	45.2	2.0
TL32A-010-123	12.0	1.0	TL32J-025-233	23.0	2.5
TL32A-015-682	6.8	1.5	TL32J-030-183	18.3	3.0
TL32A-020-332	3.3	2.0	TL32J-040-972	9.7	4.0
TL32A-025-152	1.5	2.5	TL32J-050-542	5.4	5.0
TL32B-005-563	56.0	0.5	TL32K-020-543	54.2	2.0
TL32B-010-153	15.0	1.0	TL32K-025-273	27.20	2.5
TL32B-015-822	8.2	1.5	TL32K-030-213	21.8	3.0
TL32B-020-392	3.9	2.0	TL32K-040-113	11.56	4.0
TL32B-025-182	1.8	2.5	TL32K-050-642	6.44	5.0
TL32C-005-683	68.0	0.5	TL32L-025-413	41.3	2.5
TL32C-010-183	18.0	1.0	TL32L-030-253	24.9	3.0
TL32C-015-103	10.0	1.5	TL32L-040-143	14.0	4.0
TL32C-020-472	4.7	2.0	TL32L-050-832	8.3	5.0
TL32C-025-222	2.2	2.5	TL32L-060-632	6.33	6.0
TL32D-005-823	82.0	0.5	TL32M-030-323	32.5	3.0
TL32D-010-223	22.0	1.0	TL32M-040-223	22.0	4.0
TL32D-015-123	12.0	1.5	TL32M-050-143	14.3	5.0
TL32D-020-562	5.6	2.0	TL32M-060-812	8.19	6.0
TL32D-025-272	2.7	2.5	TL32M-070-632	6.32	7.0
TL32E-010-753	75.0	1.0	TL32P-040-183	18.0	4.0
TL32E-015-343	34.6	1.5	TL32P-050-143	14.0	5.0
TL32E-020-193	19.1	2.0	TL32P-060-882	8.85	6.0
TL32E-025-133	13.1	2.5	TL32P-070-752	7.5	7.0
TL32E-030-812	8.1	3.0	TL32P-080-452	4.56	8.0
TL32F-010-863	86.6	1.0	TL32R-050-203	20.0	5.0
TL32F-015-403	40.8	1.5	TL32R-060-123	12.3	6.0
TL32F-020-223	22.3	2.0	TL32R-070-103	10.45	7.0
TL32F-025-153	15.3	2.5	TL32R-080-642	6.45	8.0
TL32F-030-922	9.2	3.0	TL32R-090-532	5.3	9.0
TL32G-015-503	50.0	1.5	TL32T-060-213	21.8	6.0
TL32G-020-323	32.7	2.0	TL32T-070-183	18.4	7.0
TL32G-025-163	16.6	2.5	TL32T-080-123	12.0	8.0
TL32G-030-133	13.4	3.0	TL32T-090-103	10.3	9.0
TL32G-040-542	5.42	4.0	TL32T-100-622	6.23	10.0
TL32H-015-623	62.7	1.5			
TL32H-020-413	41.0	2.0			
TL32H-025-213	21.2	2.5			
TL32H-030-173	17.0	3.0			
TL32H-040-712	7.1	4.0			

Note : For the products in Diagram 3, 4 & 5, three terminals types can be selected:

- Faston Tab style (Add suffix "FT" in P/N; e.g. TL32L-050-832FT)
- Flying Lead style (Add suffix "A" in P/N; e.g. TL32L-050-832A)
- Pin type with fixing rails (Add suffix "R" in P/N; e.g. TL32L-050-832R)