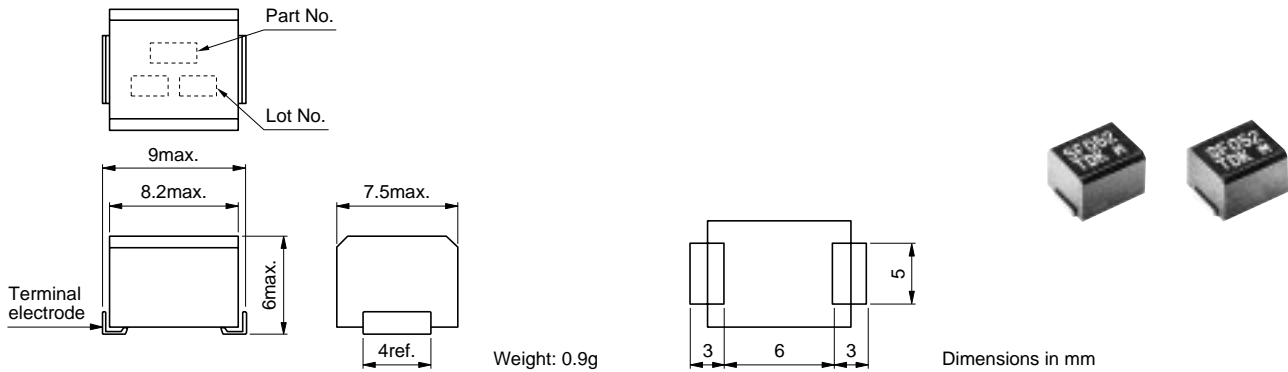


EMC Components

SFM Series

Differential-Mode Choke Coils for Signal Line and DC Power Line SMD

SHAPES AND DIMENSIONS/RECOMMENDED PC BOARD PATTERN

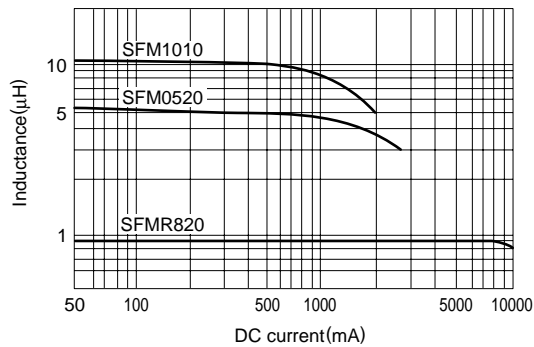


ELECTRICAL CHARACTERISTICS

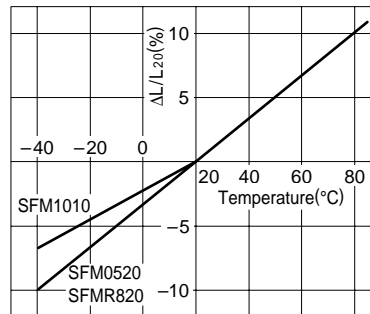
Part No.	Rated current I _{dc} (A)	Inductance(μH)	DC resistance(mΩ)max.
SFMR820	2	0.8min.	20
SFM0520	2	5min.	40
SFM1010	1	10±20%	100

- Test equipment: YHP4261A LCR METER, 1kHz
- Environmental measuring condition: Temperature 20±15°C, humidity 65±20(%)RH
- Operating temperature range: -20 to +85°C
- Packaging style (T: Taping [reel]) If you need the bulk packaging's products, please omit this code.

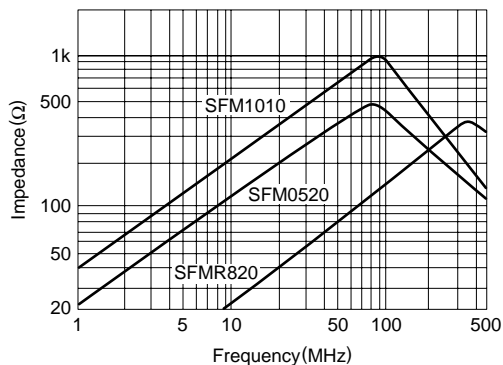
TYPICAL ELECTRICAL CHARACTERISTICS INDUCTANCE vs. DC SUPERPOSITION CHARACTERISTICS



INDUCTANCE CHANGE vs. TEMPERATURE CHARACTERISTICS



IMPEDANCE vs. FREQUENCY CHARACTERISTICS



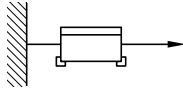
EMC Components

SFM Series

Differential-Mode Choke Coils for Signal Line and DC Power Line SMD

RELIABILITY AND TEST CONDITIONS

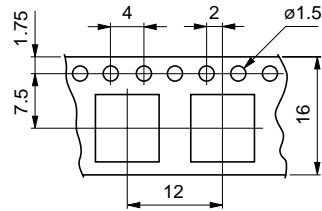
High temperature resistance	Withstands 500h exposure to 100±3°C.
Humidity resistance	Withstands 500h exposure to 90 to 95(%)RH at 40±3°C.
Thermal shock	Withstands 50 cycles of the following temperature changes. -40°C +20 to +35°C 100°C 30min 15min 30min Normal temperature +20 to +35°C for 15min.
Vibration	Withstands a 10min-sweep from 8 to 200Hz with an amplitude of 2mm or with an acceleration of 24.5m/s ² in each of the X, Y and Z axes, for a total duration of 2h.
Tensile terminal strength	An addition of 9.8N for horizontal way.



PACKAGING STYLE AND QUANTITIES

Packaging style	Quantity
Taping	1000 pieces/reel

TAPE DIMENSIONS



Dimensions in mm

RECOMMENDED REFLOW SOLDERING CONDITIONS

