

REV. Status

REVISION -  
10/22/99 TS

REVISION A  
CHANGED F  
SEE PG. 2  
11/17/99 TS

THREE FLANGE DUAL PRIMARY 10VA PC BOARD POWER TRANSFORMER

A. Electrical Specifications (@ 25°C)

1. Maximum Power; 10VA
2. Input Voltage and Frequency; 115/230V 50/60Hz
3. Voltage Regulation; 25% TYP @ full load to no load
4. Temperature Rise; 30°C TYP (45°C MAX allowed)
5. Insulation Resistance; 100MΩ MIN @ 500VDC, Pri to Sec, Pri to Core, Sec to Core
6. Hi-Pot; 3500Vrms 1 minute @ Pri to Sec  
1500Vrms 1 minute @ Pri to Core  
1500Vrms 1 minute @ Sec to Core

B. Marking; TAMURA, MICROTRAN, part number date code, country of origin, terminal number and input and output ratings

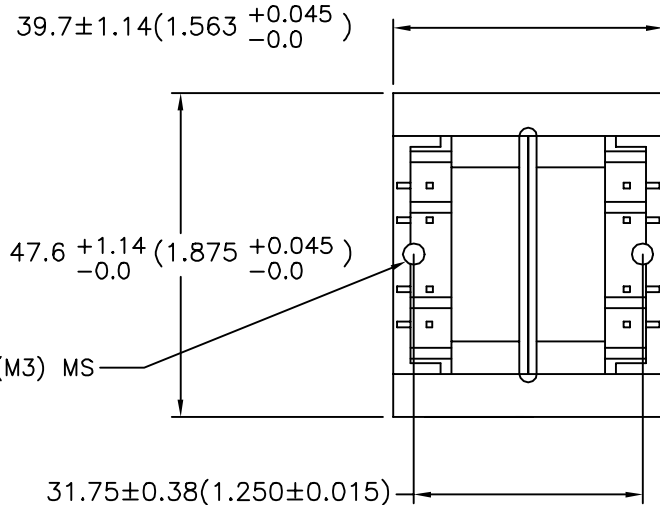
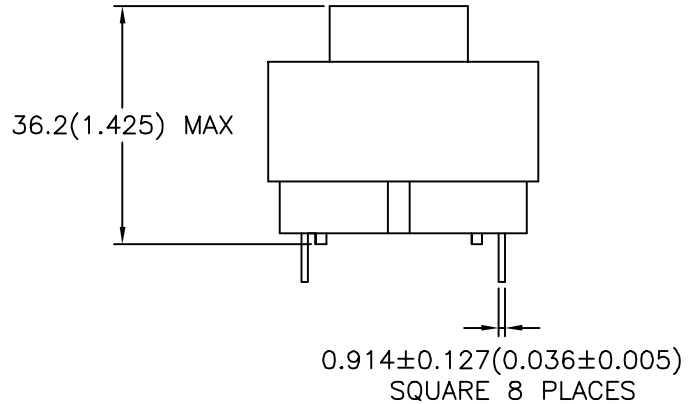
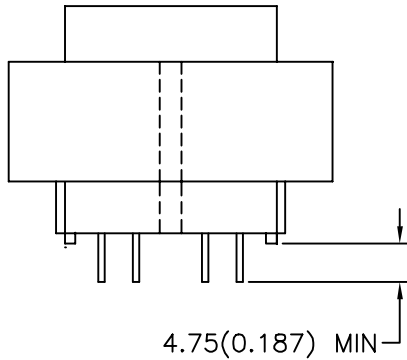
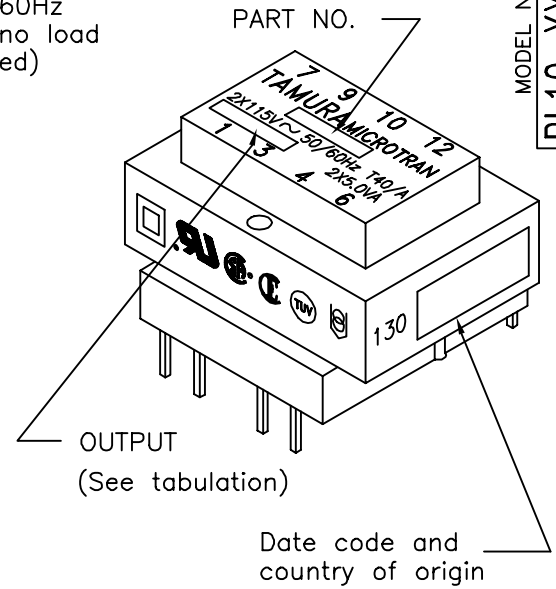
C. Safety:

CSA File Nos. LR69222 and LR69223  
UL 1411 File No. E138028 Construction only  
UL 506, General Purpose, File No. E79781.  
Insulation Class B (130°C) File No. E92957.  
TUV File 810/89 (EN60950 and VDE 0551)

D. Mechanical Specifications:



MODEL NUMBER  
PL10-XX-130B



TOLERANCES (mm)	
≤ 4	± 0.2
4 ≤ 20	± 0.3
20 ≤ 50	± 0.4

PREPARED BY:

D. Rund  
ENGINEER:

T. Shiozawa  
QUALITY CONTROL:

D. Kelley  
APPROVED:

D. Kelley

**NOTE: Board washing is not recommended for these parts**

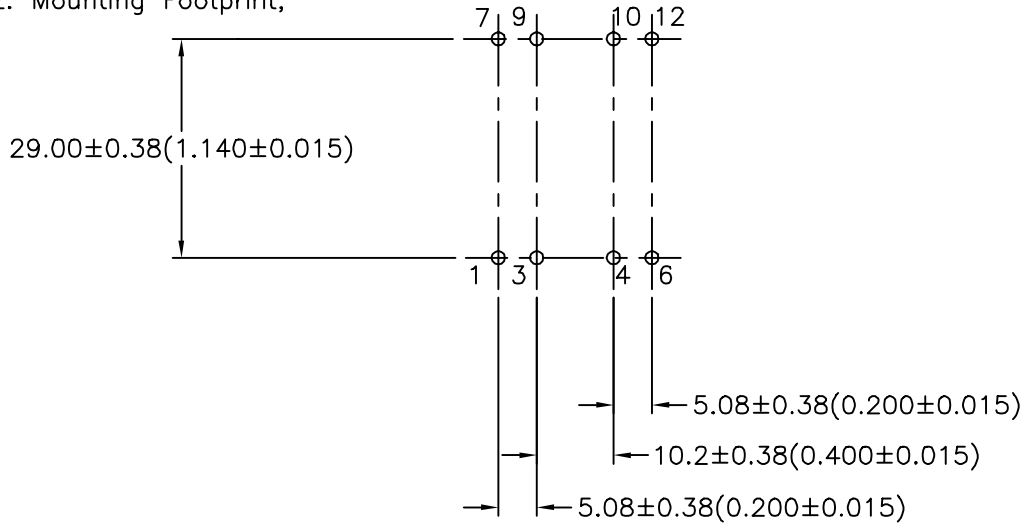
DWG CONTROL NO. P-A1-12227 ACAD\MXFMR\A1122271.DWG	REV A	POWER TRANSFORMER	PL10-XX-130B	
CONTENTS OF THIS DRAWING ARE SUBJECT TO CHANGE WITHOUT PRIOR NOTICE		TAMURA CORPORATION OF AMERICA 43352 BUSINESS PARK DRIVE, TEMECULA, CA. 92590-6624 (909) 699-1270 FAX 9096769482		MODEL SPECIFICATION
		DIM: mm(In)	SCL: None	SH: 1 OF 2
PROPRIETARY NOTICE: THIS DRAWING PRINT OR DOCUMENT AND SUBJECT MATTER DISCLOSED HEREIN ARE PROPRIETARY ITEMS TO WHICH TAMURA RETAINS THE EXCLUSIVE RIGHT OF DISSEMINATION, REPRODUCTION, MANUFACTURE AND SALE. THIS DRAWING, PRINT OR DOCUMENT IS SUBMITTED IN CONFIDENCE FOR CONSIDERATION BY THE RECIPIENT ALONE UNLESS PERMISSION FOR FURTHER DISCLOSURE IS EXPRESSLY GRANTED IN WRITING.				

REV. Status

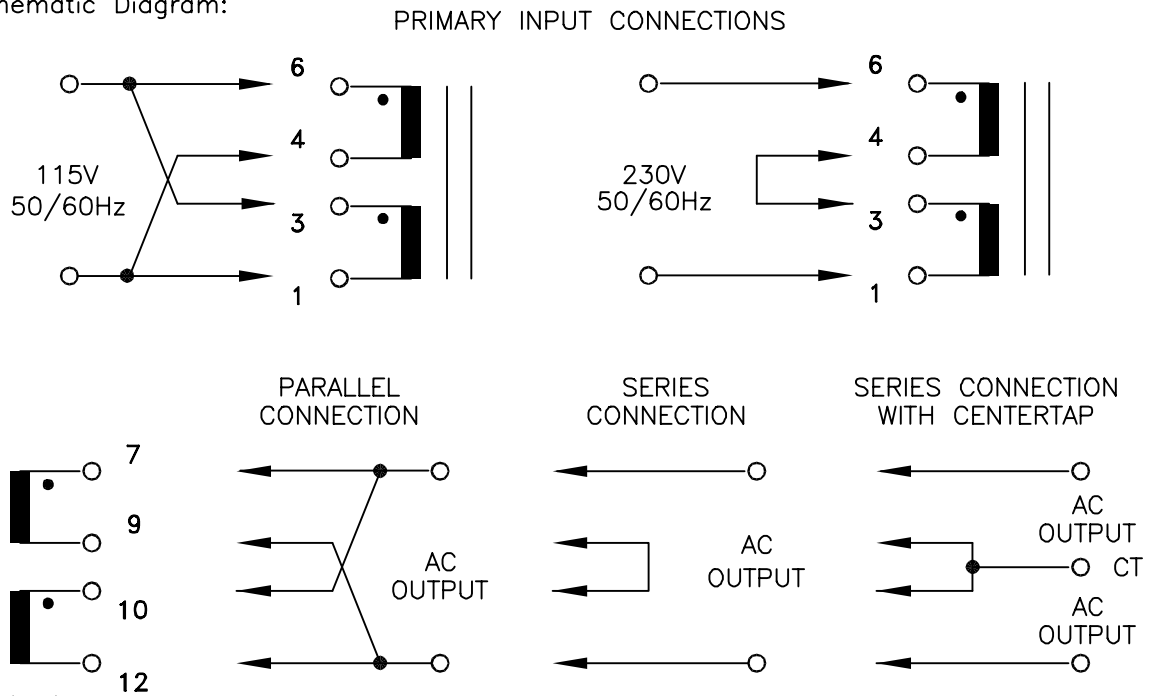
REVISION -  
10/22/99 TS  
  
REVISION A  
CHANGED F  
SEE PG. 2  
11/17/99 TS

MODEL NUMBER  
**PL10-XX-130B**

E. Mounting Footprint;



F. Schematic Diagram:



G. Table A:

TCA NUMBER	PART NO.	PARALLEL CONNECTION		SERIES CONNECTION		OUTPUT
		AC VOLTS	RMS AMPS	AC VOLTS	RMS AMPS	
P-A1-12227-01	PL10-10-130B	5.0	2.0	10.0CT	1.0	2X5.0V
P-A1-12227-02	PL10-12-130B	6.3	1.6	12.6CT	0.8	2X6.3V
P-A1-12227-03	PL10-16-130B	8.0	1.25	16.0CT	0.62	2X8.0V
P-A1-12227-04	PL10-20-130B	10.0	1.0	20.0CT	0.5	2X10.0V
P-A1-12227-05	PL10-24-130B	12.0	0.84	24.0CT	0.42	2X12.0V
P-A1-12227-06	PL10-28-130B	14.0	0.72	28.0CT	0.36	2X14.0V
P-A1-12227-07	PL10-36-130B	18.0	0.56	36.0CT	0.28	2X18.0V

TOLERANCES (mm)
≤ 4 ± 0.2
4 ≤ 20 ± 0.3
20 ≤ 50 ± 0.4

PREPARED BY:

D. Rund  
ENGINEER:

T. Shiozawa  
QUALITY CONTROL:

D. Kelley

APPROVED:

D. Kelley

DWG CONTROL NO. P-A1-12227  
ACAD\MXFMR\A1122272.DWG

REV A  
POWER TRANSFORMER  
**TAMURA CORPORATION OF AMERICA**  
43352 BUSINESS PARK DRIVE, TEMECULA, CA. 92590-6624  
(909) 699-1270 FAX 9096769482

**PL10-XX-130B**  
MODEL SPECIFICATION

DIM: mm(In) SCL: None SH: 2 OF 2

PROPRIETARY NOTICE: THIS DRAWING PRINT OR DOCUMENT AND SUBJECT MATTER DISCLOSED HEREIN ARE PROPRIETARY ITEMS TO WHICH TAMURA RETAINS THE EXCLUSIVE RIGHT OF DISSEMINATION, REPRODUCTION, MANUFACTURE AND SALE. THIS DRAWING, PRINT OR DOCUMENT IS SUBMITTED IN CONFIDENCE FOR CONSIDERATION BY THE RECIPIENT ALONE UNLESS PERMISSION FOR FURTHER DISCLOSURE IS EXPRESSLY GRANTED IN WRITING.