

Single 10/100 BASE-TX Filtered Connector Module MODEL NO. : RJLT-208TC1

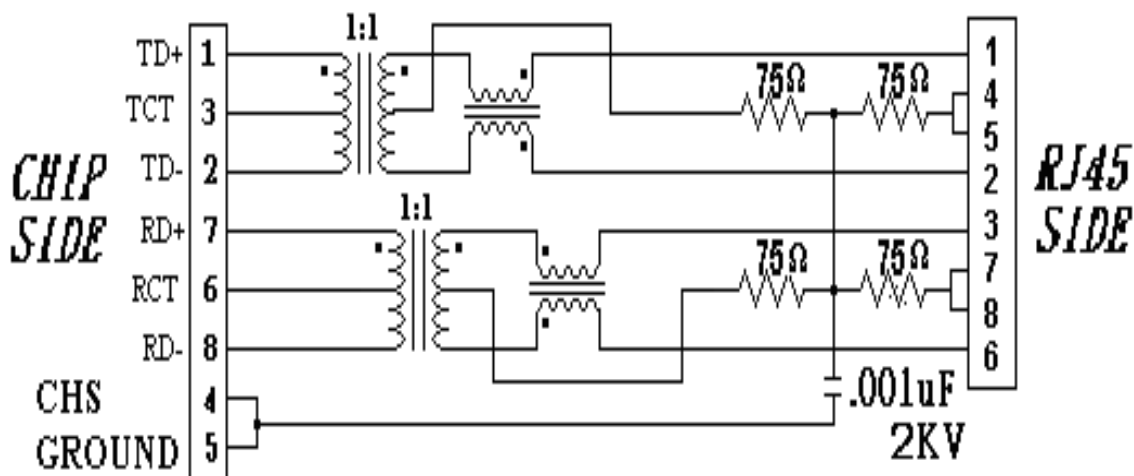
Features:

- ⊙ RoHS Compliant
- ⊙ Do not use material and use that the prohibition that SS-00259 stipulates
- ⊙ Fully shielded magnetics protect data from internally generated digital noise
- ⊙ Reduces the overall length of the signal path for improved common mode performance
- ⊙ Implements full common mode termination scheme with used and unused twisted pairs
- ⊙ Meets IEEE802.3 Baseline Wander Compensation specification
- ⊙ Integrates high voltage capacitor to chassis ground
- ⊙ Supports all major transceivers with matched turns ration and complete integration of specified termination
- ⊙ Design for 100base-tx transmission over UTP-5 cable
- ⊙ Operating TEMP. range:-40°C to +85°C
- ⊙ Primary OCL inductance: 350μH MIN. at 100KHz/0.1Vrms 8mA DC bias

Typical Performance Characteristics@ 25°C

Insertion Loss (dB MAX)	Return Loss (dB Min @100±15Ω)				Differential to Common Mode Rejection (dB MIN)	Cross talk (dB MIN)					CMRR (dB MIN)	Isolation Voltage (Vrms min)
	MHz	MHz				MHz	MHz					
1~100	1~30	40	50	60~80	1~100	20	40	60	80	100	1~100	1000
-1.0	-16	-14	-12	-10	-33	-47	-40	-37	-35	-33	-30	

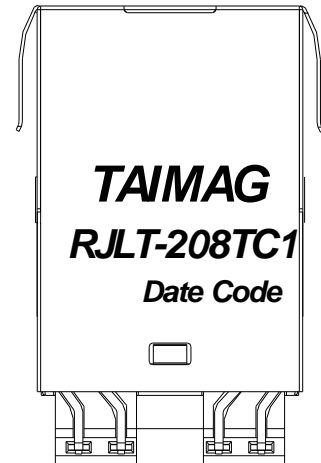
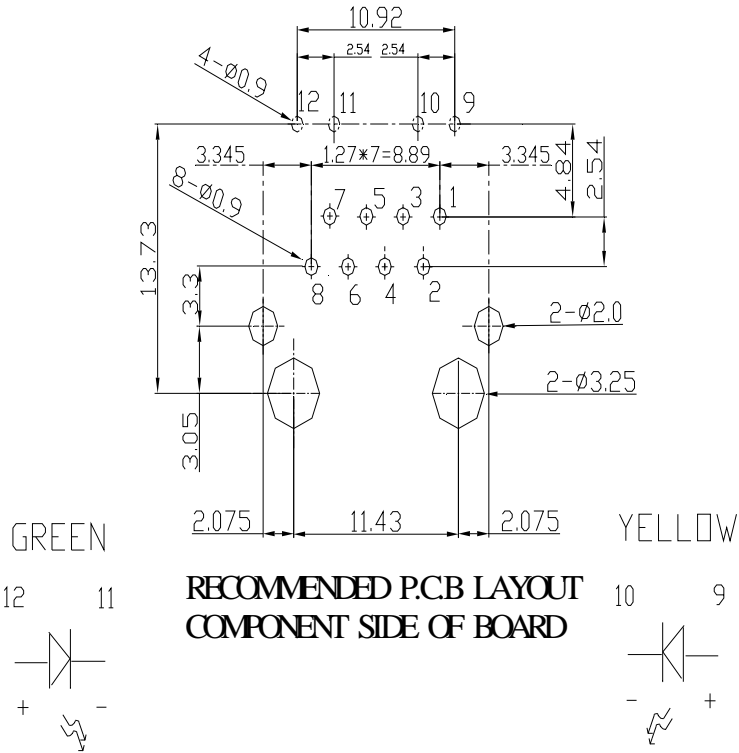
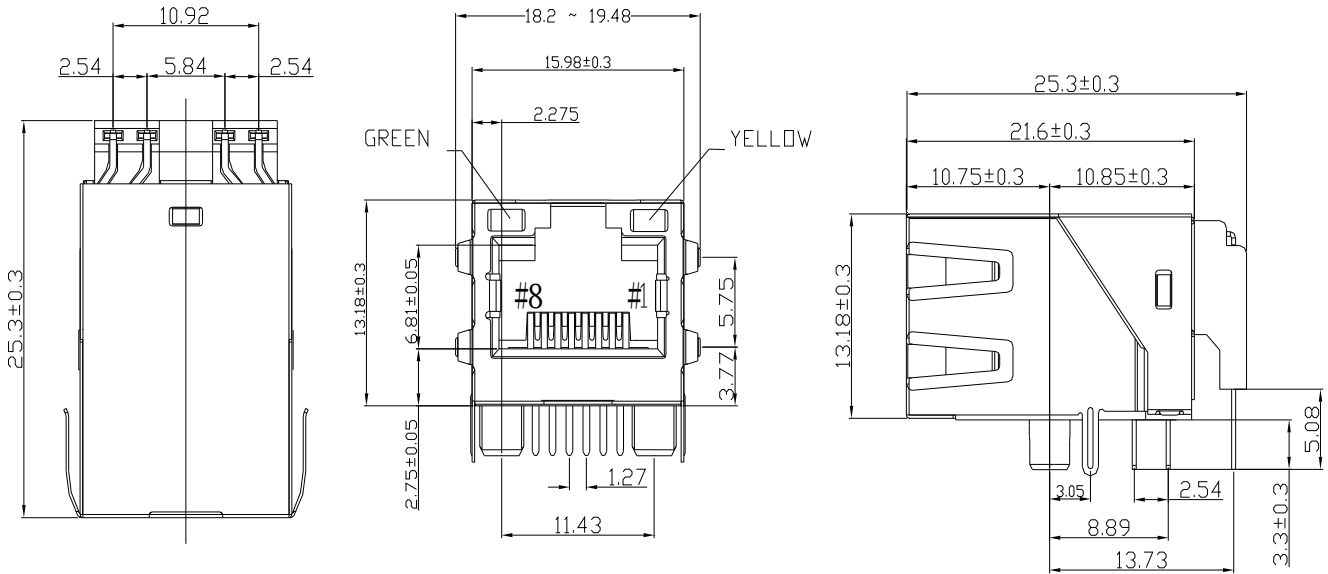
Schematic: Design on MDI Interface Circuitry



MODEL NO. : RJLT-208TC1

Dimension: mm

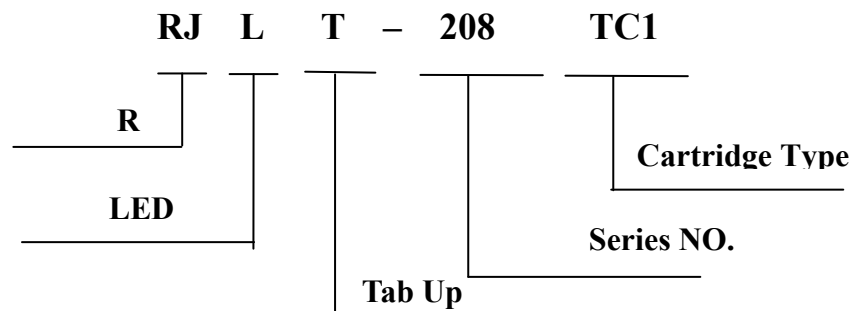
TOLERANCE: ±0.15 (unless otherwise specified)



Connector Marking

MODEL NO. : RJLT-208TC1

Ordering Information



Requirements :

1. Design and Construction

Product shall be of design, construction and physical dimensions specified on applicable product drawing.

2. Materials and Finish

A. Contact:

RJ Contact : Phosphor Bronze, Thickness=0.30mm

Finish : Contact Area : 6μ "min. Gold over 50μ "min. Nickel

RJ Joint Contact : SPCC, Thickness=0.3mm

Finish : 80μ "min. Sn over 50μ "min. Nickel

LED Joint Contact : SPCC, Thickness=0.50mm

Finish : 80μ "min. Sn over 50μ "min. Nickel

B. Plastic Part :

- (1) Set Housing : Thermoplastic, LCP, Black
UL FILE NO. : E106764
Manufacturer : POLYPLASTICS CO LTD.
Grade : E130i(d)(e)
Flame Class : UL 94V-0
- (2) Insert : Thermoplastic, LCP, Black
UL FILE NO. : E106764
Manufacturer : POLYPLASTICS CO LTD.
Grade : E130i(d)(e)
Flame Class : UL 94V-0
- (3) Spacer : Thermoplastic, LCP, Black
UL FILE NO. : E106764
Manufacturer : POLYPLASTICS CO LTD.
Grade : E130i(d)(e)
Flame Class : UL 94V-0

MODEL NO. : RJLT-208TC1

C. Shield Material :

Cartridge $t=0.25\pm0.05\text{mm}$

10 μ "-20 μ " Thick Nickel over Brass

D. LED Lamp

(a) Lens Color : Transparent with color

(b) Emitted Color : Green & Yellow

(c) View Angle : 60°

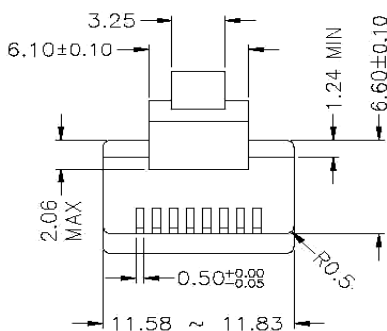
(d) Dominant Wavelength: Green 570nm ; Yellow 585nm

(e) Forward Current / Reverse Voltage : Green 30 mA /(5V) ; Yellow 20 mA /(5V)

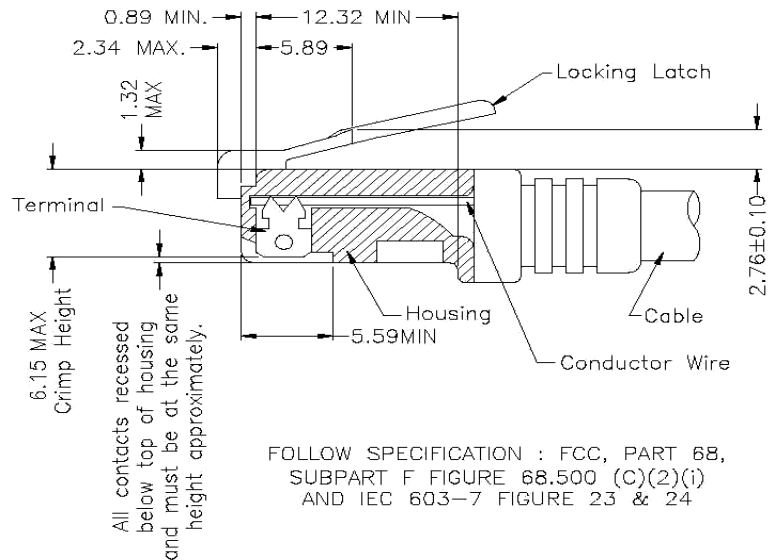
Durability :

- (1)1000 cycles with no function damage for RJ-45 . Abnormalities shall be present after the test.
- (2)Low Level Contact Resistance : $\Delta R=30\text{m}\Omega$ maximum (final)
- (3)The sample should be mounted in the tester and fully mated and unmated 500 times per hour at the rate of 25mm/min.EIA-364-09C.

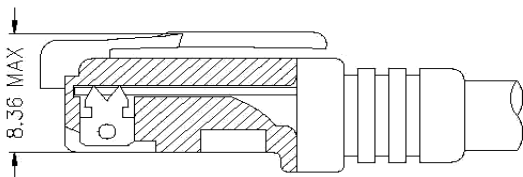
RJ PLUG SPECIFICATION :



- * There must be no damage to housing or locking latch. There must be no nicks or cuts in cable.
- * Durability : 750 cycles generally



FOLLOW SPECIFICATION : FCC, PART 68,
SUBPART F FIGURE 68.500 (C)(2)(i)
AND IEC 603-7 FIGURE 23 & 24



FOLLOW SPECIFICATION : FCC, PART 68, SUBPART F
FIGURE 68.500 (C)(2)(ii)

STANDARD MODULAR PLUG ASSEMBLY

MODEL NO. : RJLT-208TC1

1. Unit weight :5.7 grams
2. package : 50pcs / tray / 0.325 kgms
3. Carton : 500 pcs / 10 layers of tray
4. Gross weight : 3.875 kgms

Package drawing:

