

TSR-3296 SQUARE TRIMMING POTENTIOMETER

- Multiturn / Cermet / Industrial / Sealed
- 5 Terminal Styles

Electrical Characteristic

Standard Resistance Range	50Ω---2MΩ
Resistance Tolerance	±10%
Absolute Minimum Resistance	≤1%R or 10Ω
Contact Resistance Variation	CRV ≤3% or 5Ω
Insulation Resistance	R1 ≥1GΩ(100Vac)
Withstand Voltage	640Vac
Effective Travel	28 turns noom

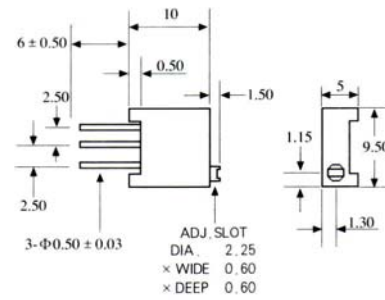
Environmental Characteristics

Power Rating(315 volts max)	0.5W@70°C, 0W@125°C
Temperature Range	-55°C---125°C
Temperature Coefficient	±250ppm/°C
Temperature Variation	-55°C, 30min, +125°C 30min 5cycles ΔR ≤5%R, Δ(Uab/Uac) ≤5%
Vibration	10---500Hz, 0.75mm, 6h ΔR ≤5%R, Δ(Uab/Uac) ≤7.5%R
Collision	390m/s ² , 4000cycles, ΔR ≤5%R
Electrical Endurance at 70°C	0.5W@70°C 1000h, ΔR ≤10%R CRV ≤3% or 5Ω
Rotational Life	200cycles ΔR ≤10%R, CRV ≤3% or 5Ω

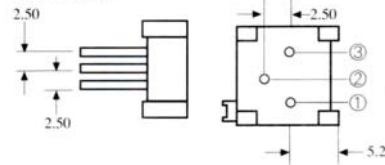
Physical Characteristics

Starting Torque	≤35mN·m
Marking	When no identification, it is of ±10% Resistance Code, Model
Standard Packaging	50pcs, per tube

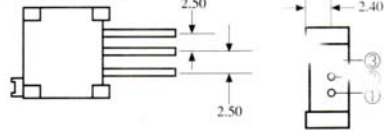
Common Dimensions



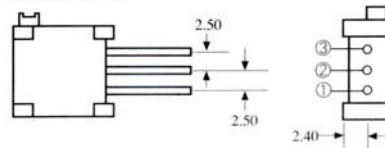
TSR-3296P



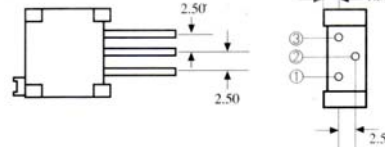
TSR-3296W



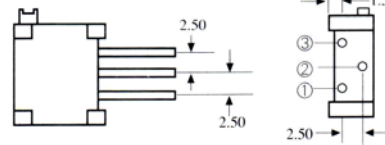
TSR-3296X



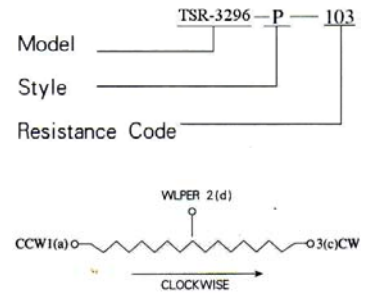
TSR-3296Y



TSR-3296Z



How To Order



Tolerance is 0.25 If no identification.

Standard Resistance Table

Resistance(Ohms)	Resistance Code
10	100
20	200
50	500
100	101
200	201
500	501
1,000	102
2,000	202
5,000	502
10,000	103
20,000	203
25,000	253
50,000	503
100,000	104
200,000	204
250,000	254
500,000	504
1,000,000	105
2,000,000	205