

PCB, Microfuse 250 V , IP 30



250 VAC · 6.3 A (UL/CSA)

**Description**

- Through hole mounting


Standards

- UL 512
- CSA C22.2 no. 39

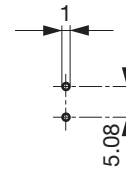
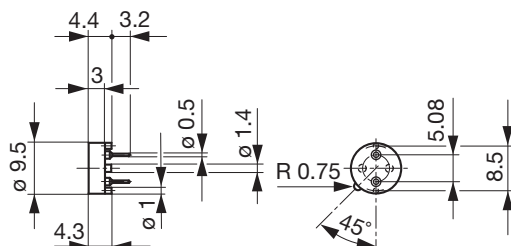
References

General Product Information

Suitable fuse [MSF 250](#); [MST 250](#); [MSTU 250](#); [MSU 250](#); [MXT 250](#)**Weblinks**Approvals: <http://www.schurter.com/approvals>RoHS: <http://www.schurter.com/rohs>**Technical Data**

Fuse-Link	Microfuse 250 V
Mounting	PCB
Terminal	Solder THT
Rated Voltage	250 VAC
Rated Current	6.3 A (UL/CSA)
Degree of Protection	IP 30
Admissible Ambient Air Temp.	-40 °C to 85 °C
Climatic Category	40/085/21 acc. to IEC 60068-1
Material: Socket	Thermoplastic, Beige, UL 94V-0
Material: Terminals	Tin-Plated Copper Alloy
Unit Weight (Socket/Cap)	0.37 g
Storage Conditions	0 °C to 60 °C, max. 70% r.h.
Product Marking	 Approvals

Soldering Methods	Wave
Solderability	235 °C / 2 sec acc. to IEC 60068-2-20, Test Ta, method 1
Resistance to Soldering Heat	260 °C / 10 sec acc. to IEC 60068-2-20, Test Tb, method 1A
Contact Resistance	< 7 mΩ at 20 mV
Dielectric Strength	> 3 kV between L-N (50 Hz; 1 min)
Impulse Withstand Voltage	> 4 kV between L-N
Insulation Resistance	> 10 MΩ between L-N (500 VDC; 1 min)
Overvoltage Category	I - III acc. to IEC 60664-1
Pollution Degree	1 - 3 acc. to IEC 60664-1

DimensionsLength  7.6 mm

Drilling Diagram

Variants

Order Number	Holder
0031.7601	

Packaging Unit Plastic box (100 pcs.)