

Short Form Components

Filters, Chokes, Feedthrough Components
& Pulse Transformers

Filter, Drosseln, Durchführungscomponenten
& Impulstransformatoren

Filtres, Selfs, Composants de Traversée
& Transformateurs d'impulsion

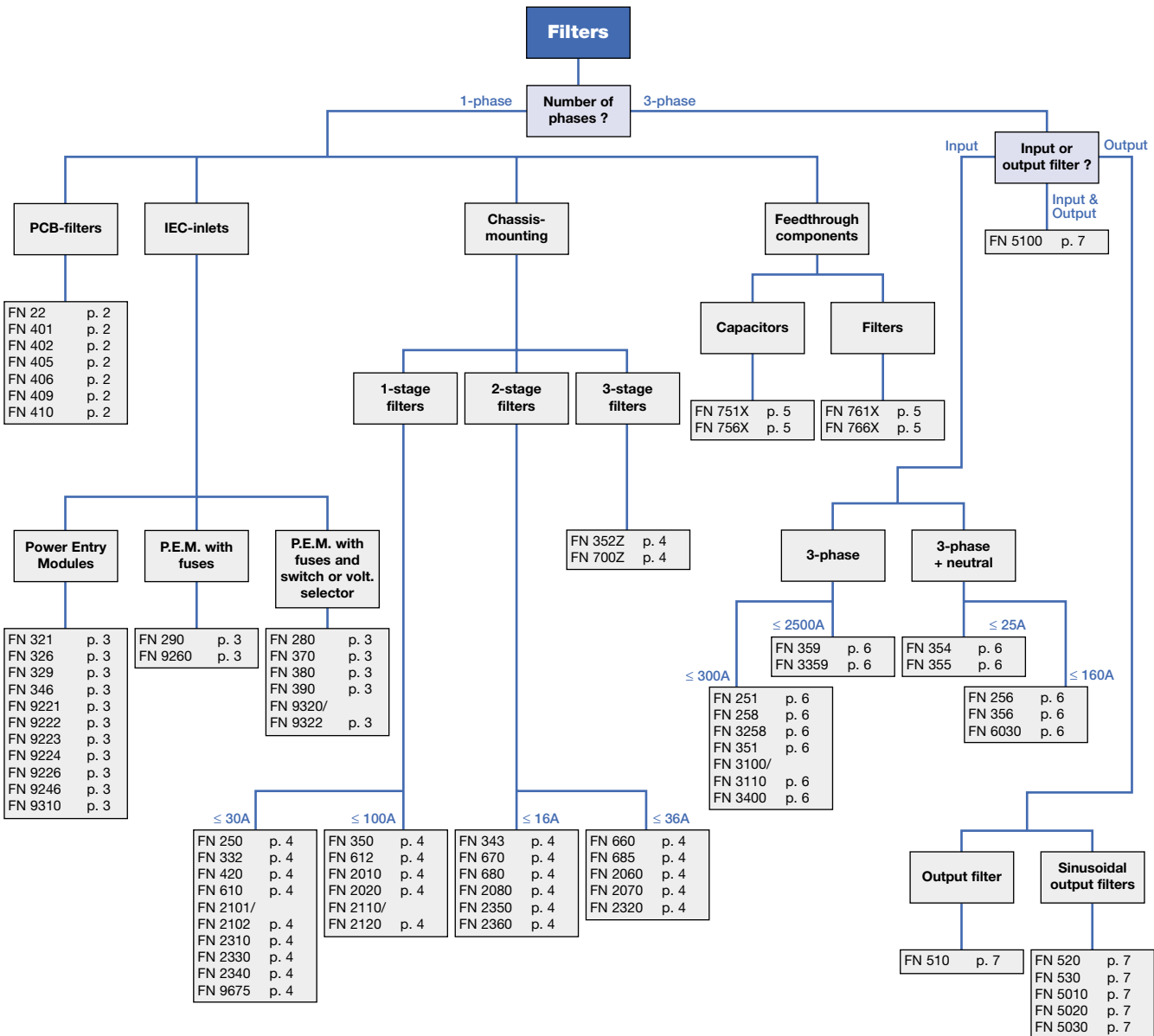
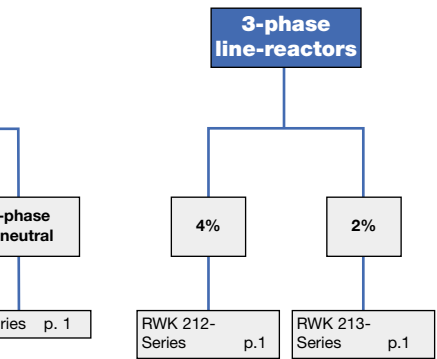
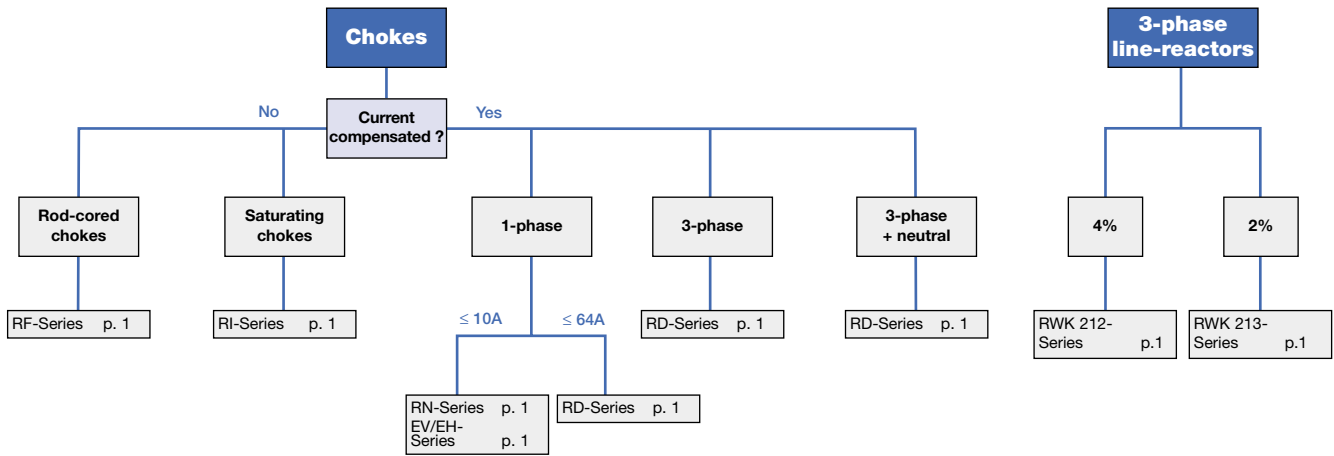


SCHAFFNER

COMPONENTS

www.schaffner.com

Product selection chart



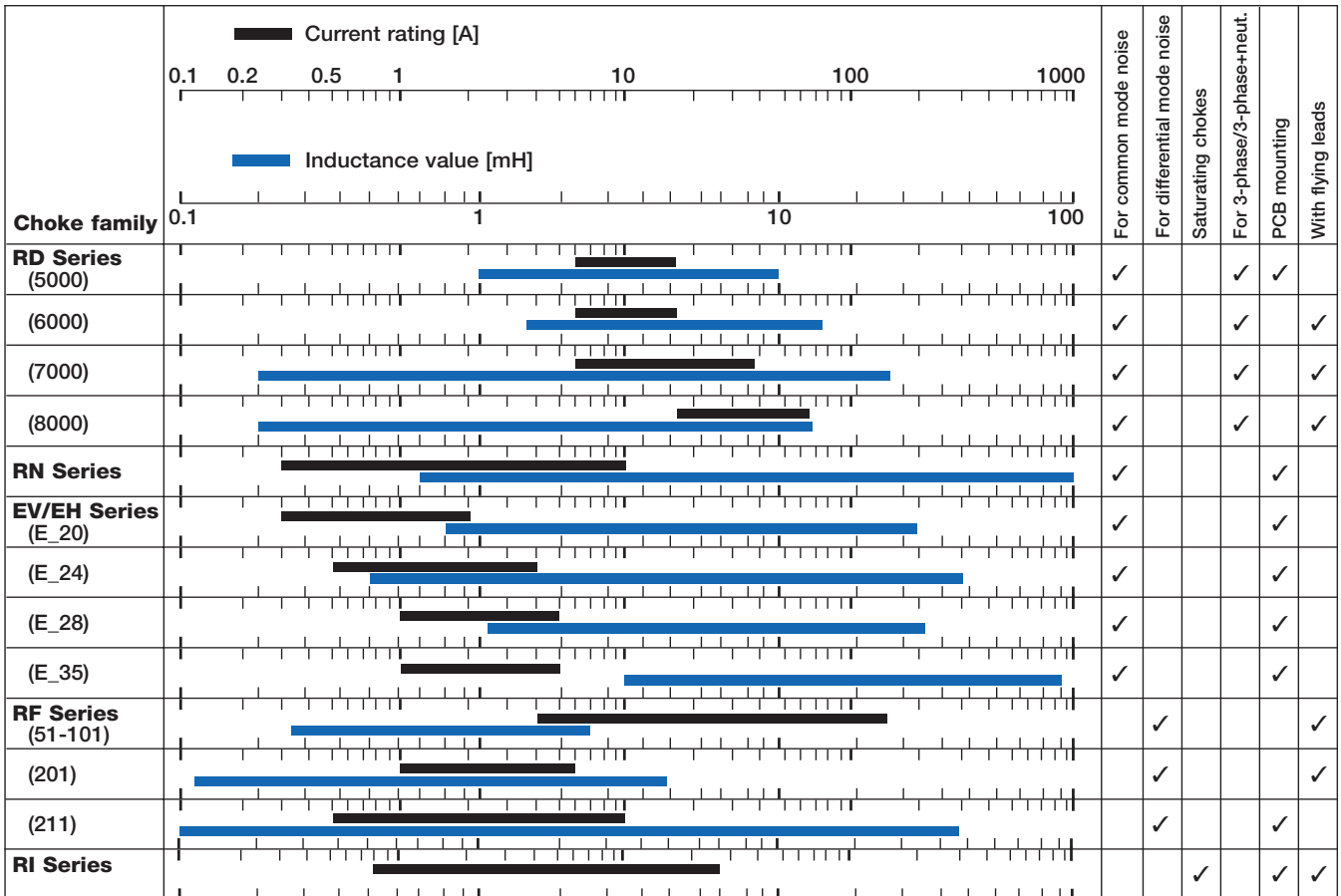
Found a solution?

For more detailed information, please check the following pages.

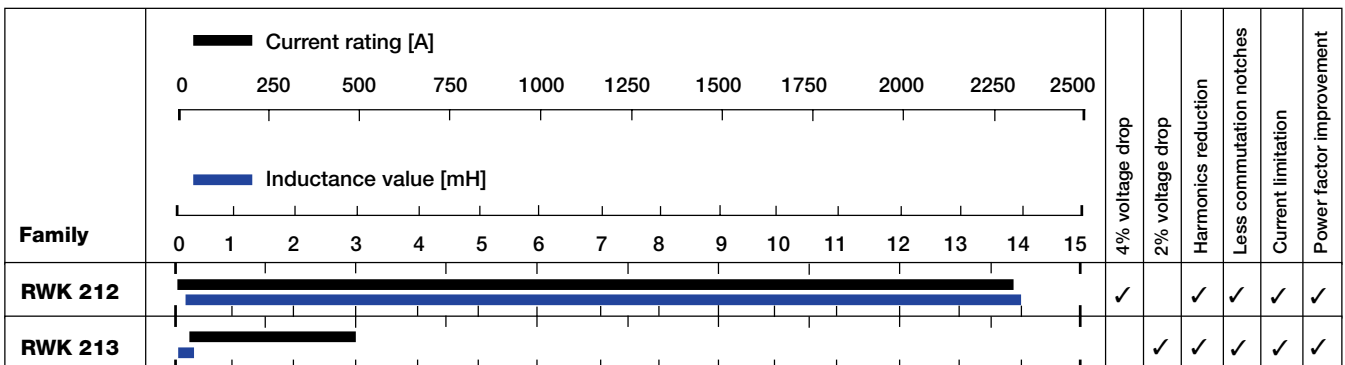
RFI suppression chokes and line-reactors



RFI suppression chokes



Three-phase line-reactors



For full product specifications, please ask your local Schaffner sales office or distributor for the latest technical datasheets and/or visit our website at www.schaffner.com

PCB filters



Filter family	1 2 3 4 5 6 7 8 9 10										2 stage	for DC-applications	for medical equipment	for PCB-mounting
	Current rating [A] (black bar) Insertion loss (blue bar)													
	standard		middle		high		very high							
FN 22	[Current rating: 1-2A]		[Insertion loss: 3-6]											✓
FN 401	[Current rating: 1-2A]		[Insertion loss: 3-6]											✓
FN 402	[Current rating: 1-4A]				[Insertion loss: 3-6]								✓	✓
FN 405	[Current rating: 1-4A]				[Insertion loss: 3-5]									✓
FN 406	[Current rating: 1-4A]				[Insertion loss: 3-6]								✓	✓
FN 409					[Current rating: 5-7A]				[Current rating: 8-10A]		✓	✓		✓
FN 410	[Current rating: 1-4A]				[Insertion loss: 4-7]						✓			✓

For full product specifications, please ask your local Schaffner sales office or distributor for the latest technical datasheets and/or visit our website at www.schaffner.com

IEC-inlet filters



Family	1 2 3 4 5 6 7 8 9 10 11 12 13 14														with earth line choke	for fuse(s)	with switch	with voltage selector	for switch mode power suppl.	for medical equipment	IEC 950-compliant	for PCB mounting	snap-in version
	■ Current rating [A] ■ Insertion loss																						
	1 ← standard medium high very high → 9																						
FN 321	[Current rating: 1-10, Insertion loss: 7-11]																		✓	✓	✓		
FN 326	[Current rating: 1-10, Insertion loss: 3-5]																			✓	✓	✓	
FN 329	[Current rating: 1-6, Insertion loss: 8-9]														✓						✓		
FN 346	[Current rating: 2-10, Insertion loss: 10-13]																		✓		✓		
FN 9221	[Current rating: 1-10, Insertion loss: 7-11]																		✓	✓	✓		✓
FN 9222	[Current rating: 1-14, Insertion loss: 7-11]																		✓	✓	✓		✓
FN 9223	[Current rating: 1-10, Insertion loss: 6-9]																			✓	✓		✓
FN 9224	[Current rating: 1-10, Insertion loss: 6-11]																		✓	✓	✓		✓
FN 9226	[Current rating: 1-10, Insertion loss: 6-11]																			✓	✓	✓	
FN 9246	[Current rating: 1-14, Insertion loss: 6-11]																		✓	✓	✓		
FN 290	[Current rating: 1-6, Insertion loss: 7-9]														✓	✓				✓	✓		
FN 9260	[Current rating: 1-6, Insertion loss: 7-8]															✓				✓	✓		✓
FN 280	[Current rating: 1-10, Insertion loss: 6-9]														✓	✓	✓			✓	✓		✓
FN 370	[Current rating: 2-6, Insertion loss: 4-6]															✓		✓		✓	✓		✓
FN 380	[Current rating: 2-6, Insertion loss: 4-6]															✓	✓			✓	✓		✓
FN 390	[Current rating: 1-6, Insertion loss: 6-9]														✓	✓	✓	✓		✓	✓		
FN 1390	[Current rating: 1-10, Insertion loss: 7-11]														✓	✓	✓	✓		✓	✓		
FN 9310	[Current rating: 1-14, Insertion loss: 7-11]																			✓	✓		✓
FN 9320	[Current rating: 1-10, Insertion loss: 7-11]																✓	✓		✓	✓		✓
FN 9322	[Current rating: 1-10, Insertion loss: 7-11]															✓	✓	✓		✓	✓		✓

For full product specifications, please ask your local Schaffner sales office or distributor for the latest technical datasheets and/or visit our website at www.schaffner.com

Single-phase filters for chassis mounting



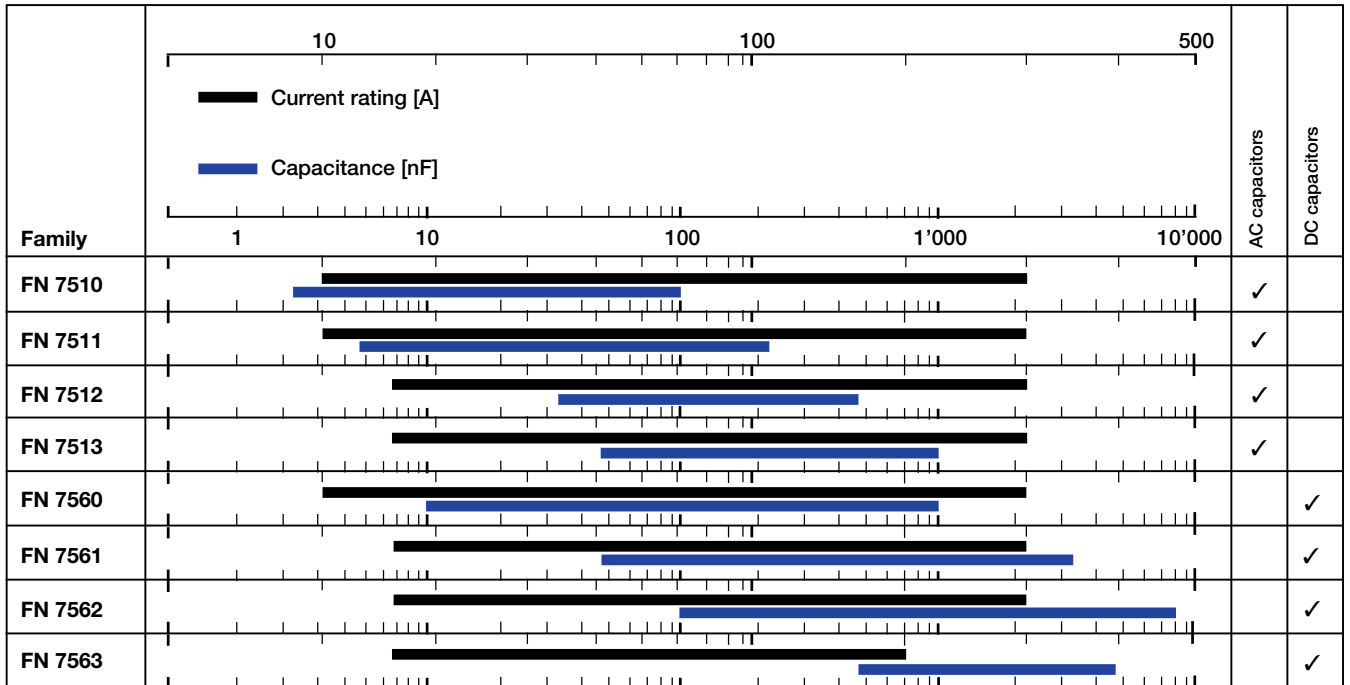
Filter family	Current rating [A]										with earth line choke	with overvoltage protection	2 stage	3 stage	with IEC inlet	for SMPS	for medical equipment	NEMP, TEMPEST	for telecom applications	for motor drives		
	5	10	15	20	25	30	35	40	45	50												
FN 250, 350																	✓			✓		
FN 332												✓					✓					
FN 610, 612																	✓					
FN 2010																	✓					
FN 2020																	✓					
FN 2101/FN 2102																			✓			
FN 2110/FN 2120																			✓			
FN 2310																						
FN 2330																						
FN 2340																						
FN 9675/76																	✓	✓		✓		
FN 343												✓	✓									
FN 660, 670													✓			✓	✓			✓		
FN 680, 685													✓			✓				✓		
FN 2060													✓			✓						
FN 2070													✓			✓	✓			✓		
FN 2080													✓			✓	✓			✓		
FN 2320													✓			✓						
FN 2350													✓									
FN 2360													✓			✓	✓					
FN 352Z												✓	✓			✓						
FN 700Z												✓	✓	✓	✓	✓		✓				

For full product specifications, please ask your local Schaffner sales office or distributor for the latest technical datasheets and/or visit our website at www.schaffner.com

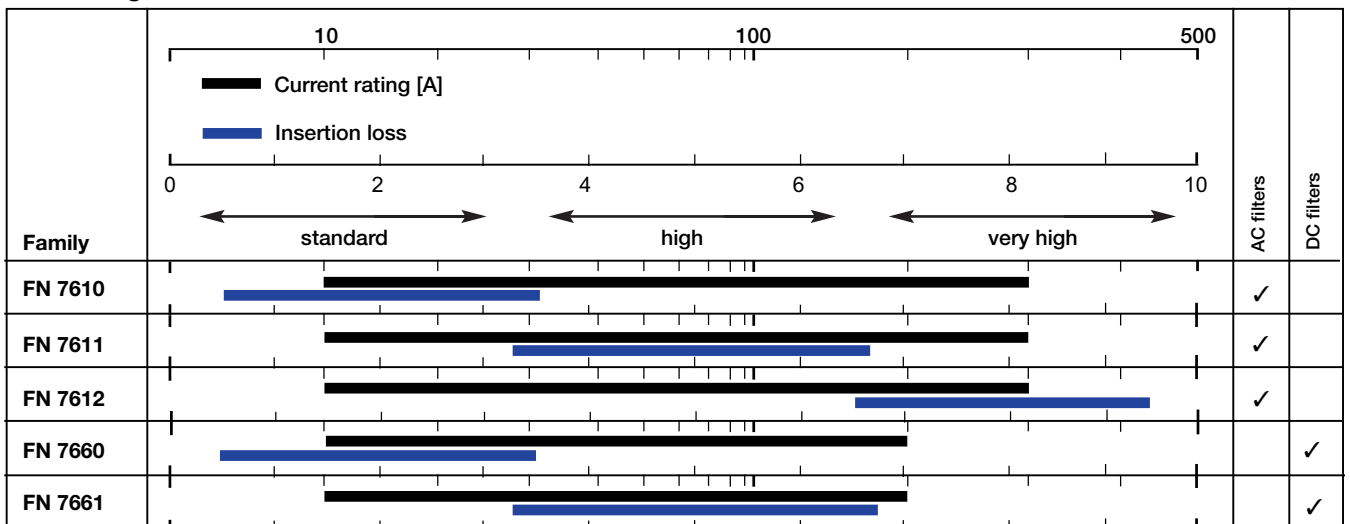
Feedthrough capacitors and filters



Feedthrough capacitors



Feedthrough filters

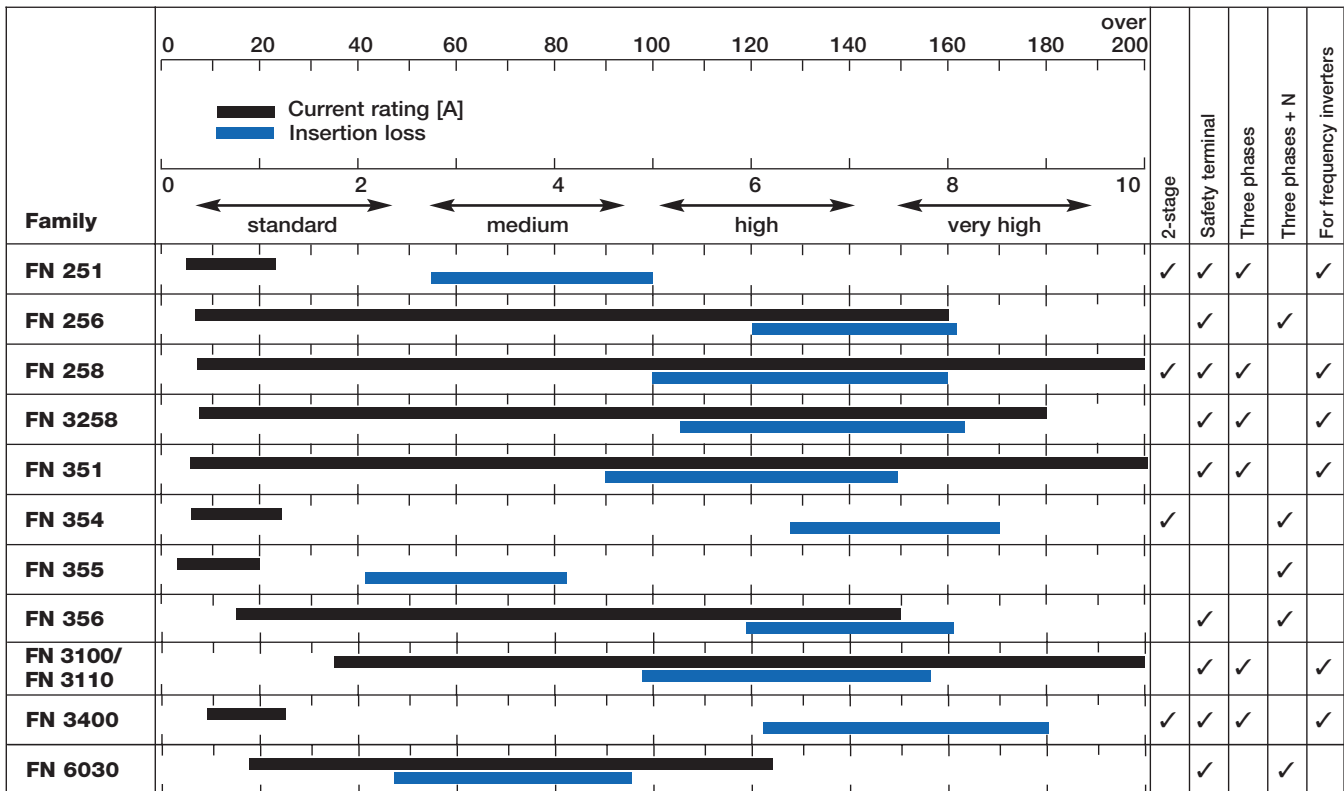


For full product specifications, please ask your local Schaffner sales office or distributor for the latest technical datasheets and/or visit our website at www.schaffner.com

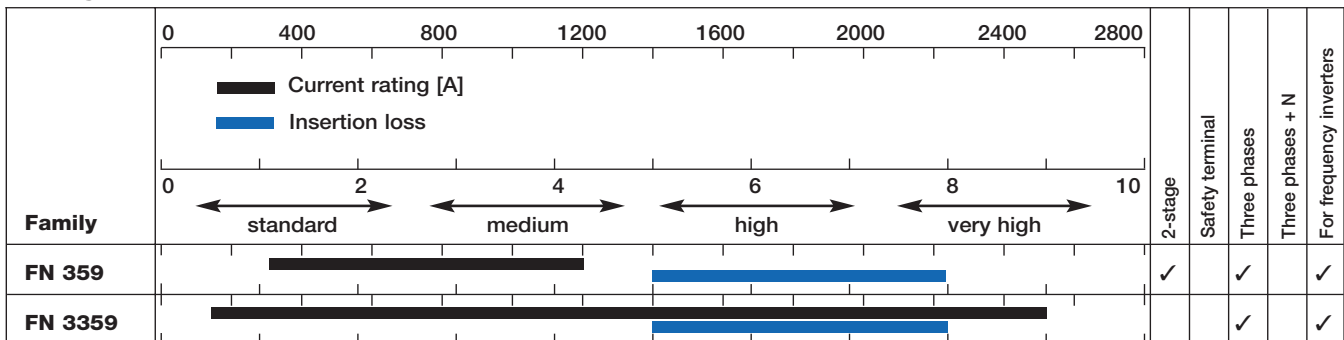
Three-phase filters for chassis mounting



For currents up to 300A



For high currents



For full product specifications, please ask your local Schaffner sales office or distributor for the latest technical datasheets and/or visit our website at www.schaffner.com

Output filters



For currents up to 120A

Family	0 20 40 60 80 100 120 140 160 180 200											dv/dt + overvoltage restriction	Sinusoidal output filter	Sinusoidal + EMC output filter	Input + output combi filter	Maximising motor life	No shielded cables required
	■ Current rating [A] ■ Max. motor power [kW]																
Family	0 20 40 60 80 100																
FN 510	[Bar chart showing current rating up to ~40A and max. motor power up to ~30kW]											✓				✓	
FN 520	[Bar chart showing current rating up to ~10A and max. motor power up to ~5kW]											✓	✓			✓	
FN 530	[Bar chart showing current rating up to ~10A and max. motor power up to ~5kW]											✓		✓		✓	✓
FN 5020	[Bar chart showing current rating up to ~60A and max. motor power up to ~50kW]											✓	✓			✓	
FN 5030*	[Bar chart showing current rating up to ~60A and max. motor power up to ~50kW]											✓		✓		✓	✓
FN 5100	[Bar chart showing current rating up to ~50A and max. motor power up to ~40kW]											✓			✓	✓	✓

* additional output filter module to be operated with FN 5010 or FN 5020.

For high currents

Family	0 100 200 300 400 500 600 700 800 900 1000											dv/dt + overvoltage restriction	Sinusoidal output filter	Sinusoidal + EMC output filter	Input + output combi filter	Maximising motor life	No shielded cables required
	■ Current rating [A] ■ Max. motor power [kW]																
Family	0 100 200 300 400 500																
FN 5010	[Bar chart showing current rating up to ~600A and max. motor power up to ~400kW]											✓	✓			✓	

For full product specifications, please ask your local Schaffner sales office or distributor for the latest technical datasheets and/or visit our website at www.schaffner.com

© 2001 Schaffner EMV. Specifications subject to change without notice. All trademarks recognised.

Schaffner is an ISO-registered company. It's products are designed and manufactured under the strict quality requirements of the ISO 9001 standard.

This catalogue is a sales and promotion document. It has been carefully checked. However, Schaffner does not assume any liability for errors or inaccuracies.

To obtain the latest technical datasheets, contact your local sales office.



SCHAFFNER

HEADQUARTERS

Schaffner EMV AG
CH-4542 Luterbach
Switzerland
Tel: [+41] 32 6816 626
Fax: [+41] 32 6816 641
E-mail: sales@schaffner.com

EUROLOGISTICS CENTER Schaffner EMC S.A.S.

F-68311 Illzach
France
Tel: [+33] 3 89 31 04 00
Fax: [+33] 3 89 31 04 01

690-0611
Benteli Hallwag Druck AG / September 2001

SALES SUBSIDIARIES

China

Schaffner Beijing Liaison Office
Tel: [+86] 10 6510 1761
E-mail: chinasales@schaffner.com

Italy

Schaffner EMC Srl
Tel: [+39] 02 66 04 30 45
E-mail: italysales@schaffner.com

Switzerland

Schaffner EMV AG
Tel: [+41] 32 6816 626
E-mail: switzerlandsales@schaffner.com

Finland

Schaffner Electro Ferrum Oy
Tel: [+358] 19 326 616
E-mail: finlandsales@schaffner.com

Japan

Schaffner EMC KK
Tel: [+81] 3 3418 5822
E-mail: japansales@schaffner.com

UK

Schaffner EMC Ltd
Tel: [+44] 118 977 0070
E-mail: uksales@schaffner.com

France

Schaffner EMC S.A.S.
Tel: [+33] 1 34 34 30 60
E-mail: francesales@schaffner.com

Singapore

Schaffner EMC Pte Ltd
Tel: [+65] 377 3283
E-mail: singaporesales@schaffner.com

USA

Schaffner EMC Inc
Tel: [+1] 732 225 9533
E-mail: usasales@schaffner.com

Germany

Schaffner EMV GmbH
Tel: [+49] 721 56 910
E-mail: germanysales@schaffner.com

Sweden

Schaffner EMC AB
Tel: [+46] 8 5792 1121
E-mail: swedensales@schaffner.com