

GF For Inverter Circuits Series

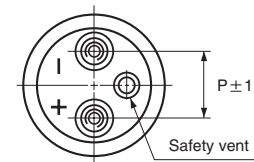
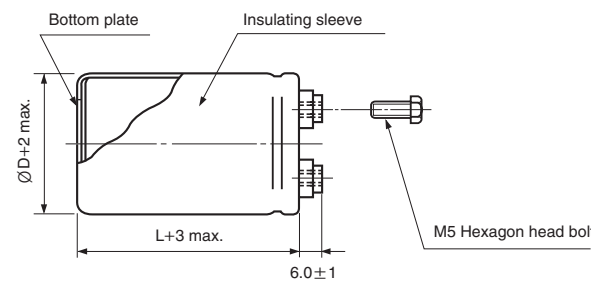


- Screw terminal series in compact case sizes
- High reliability, long life guaranteed for 5000 hours load life at 85°C (500 ~ 600WV is assured 2000 hours at 85°C)
- Suited for use in industrial power supplies for inverters
- Complied to the RoHS directive

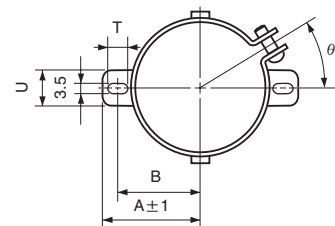
Item	Characteristics	
Operating temperature range	WV ≤ 350 : -40~105°C, WV > 350 : -25~105°C	
Capacitance tolerance	±20% at 120Hz, 20°C	
Leakage current max.	$I=3\sqrt{CV}$ (μA) (after 5 minutes)	
Dissipation factor max.	0.20 max. at 120Hz, 20°C	
Load life (after application of the rated voltage for 5000 hours at 85°C)	Leakage current	Less than specified value
	Capacitance change	Within ±20% of initial value
	tanδ	Less than 300% of specified value
500~600WV products are for 2000 hours.		
Shelf life (at 85°C)	After 1000 hours no load test, leakage current, capacitance and tanδ are same as load life value.	

● DRAWING

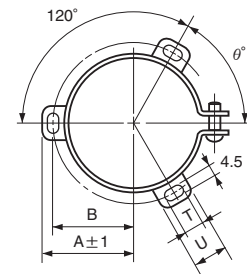
Unit : mm



● TWO LEGS ANGLE



● THREE LEGS ANGLE



● TWO LEGS ANGLE SIZE TABLE

∅D	B	A	T	U	θ°	P
51	33.6	39.9	6	14	30	22
63.5	40.8	46.8	6	14	30	28.6

● THREE LEGS ANGLE SIZE TABLE

∅D	B	A	T	U	θ°	P
51	32.9	38.9	7	12	60	22
63.5	38.4	45.3	7	14	60	28.6
76.2	44.5	51.5	8	16	60	31.8
89	50.8	61	8	16	60	31.8



GF series

● DIMENSIONS & MAXIMUM PERMISSIBLE RIPPLE CURRENT

μF \ WV	350		400		450	
	2200	51 × 110	6.0	51 × 130	6.4	63.5 × 110
2700	51 × 130	7.1	63.5 × 110	7.1	63.5 × 130	7.5
3300	63.5 × 100	7.5	63.5 × 130	8.3	76.2 × 110	8.0
3900	63.5 × 100	8.2	76.2 × 100	8.4	76.2 × 130	9.3
4700	76.2 × 100	9.3	76.2 × 130	10.2	76.2 × 150	10.8
5600	76.2 × 110	10.5	76.2 × 150	11.8	76.2 × 160	12.1
6800	76.2 × 130	12.3	76.2 × 160	13.4	89 × 150	14.3
8200	76.2 × 160	14.7	89 × 150	15.7	89 × 160	16.1
10000	89 × 150	17.3	89 × 160	17.8		
12000	89 × 160	19.5				

μF \ WV	500		550		600	
	1000	51 × 120	4.2	51 × 130	4.2	63.5 × 130
1200	63.5 × 100	4.5	63.5 × 110	5.0	76.2 × 120	6.7
1500	63.5 × 100	5.1	63.5 × 130	6.0	76.2 × 140	8.1
1800	63.5 × 120	6.0	76.2 × 110	6.7	76.2 × 160	9.6
2200	63.5 × 140	7.0	76.2 × 130	8.0	76.2 × 160	10.7
2700	76.2 × 120	7.5	76.2 × 150	9.4	89 × 160	12.6
3300	76.2 × 140	8.8	76.2 × 160	11.0		
3900			89 × 160	12.5		

Ripple current (A rms) at 85°C, 120Hz
Case size ∅D × L (mm)

● PERMISSIBLE RIPPLE CURRENT MULTIPLIERS

Frequency	50Hz	120Hz	300Hz	1kHz	3kHz
Coefficient	0.8	1.0	1.1	1.3	1.4