

ROYAL OHM

Power Type Wire-Wound Resistors

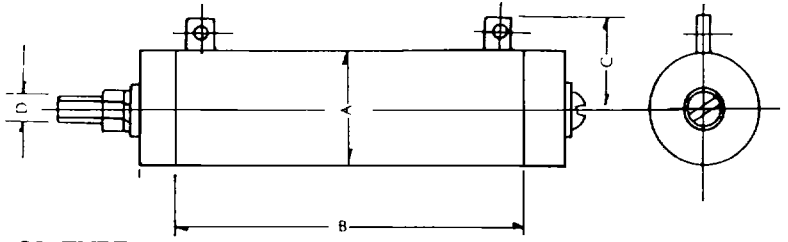
Features:

- High resistivity to heat, small resistance temp. coefficient and the change in resistance with temperature being linear.
- Resistance value unchanged after long use, good resistivity to short time overload.
- Small in size but capable of carrying high power load.
- Multi-terminal types and variable types available.
- Too low or too high ohmic value can be supplied only case by case.

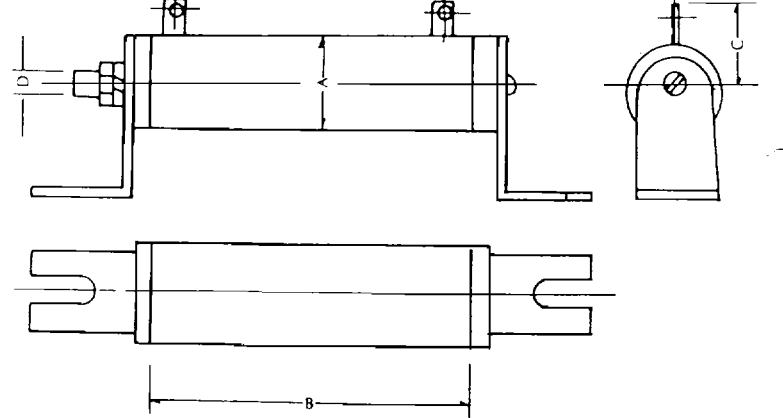
Rating & General Specification

Style	W	A	B	C	D	Resistance Range	Tolerance
QH & QL	5W	10	30	14	4	1Ω~100Ω	J (±5%)
	10W	12	45	16	5	1Ω~3KΩ	
	20W	19	50	19	10	1Ω~10KΩ	
	25W	19	60	19	10	2Ω~12KΩ	
	30W	19	75	19	10	2Ω~15KΩ	
	40W	19	90	19	10	2Ω~20KΩ	
	50W	28	75	31	16	3Ω~25KΩ	
	60W	28	90	31	16	3Ω~30KΩ	
	80W	28	115	31	16	3Ω~40KΩ	
	100W	28	140	31	16	3Ω~50KΩ	
	120W	28	165	31	16	4Ω~60KΩ	
	150W	28	195	31	16	4Ω~70KΩ	
	200W	28	254	31	16	5Ω~100KΩ	
	300W	42	254	33	25	8Ω~150KΩ	
400W	42	330	38	25	10Ω~200KΩ		
600W	42	420	38	35	10Ω~200KΩ		

QH TYPE

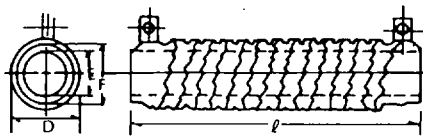


QL TYPE

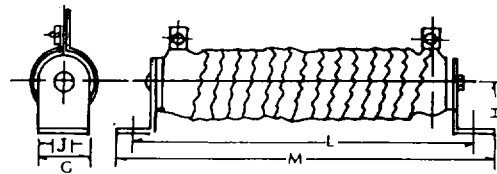


Power Type Ribbon Wire-Wound Resistors

QR TYPE



QRZG TYPE



Style	Max. Watts	Dimension (mm)									Resistance Range
		D	E	F	G	H	J	L	M		
QR80	120W	33	16	28	26	22	6	115	148	167	0.2Ω~ 4Ω
QR100	150W	33	16	28	26	22	6	140	173	192	0.3Ω~ 5Ω
QR120	180W	33	16	28	26	22	6	165	198	217	0.3Ω~ 6Ω
QR150	225W	33	16	28	26	22	6	195	228	247	0.4Ω~ 8Ω
QR200	300W	33	16	28	26	22	6	254	287	306	0.5Ω~10Ω
QR300	450W	48	25	40	40	40	9	254	308	334	0.8Ω~15Ω
QR400	600W	48	25	40	40	40	9	330	384	410	1Ω~20Ω