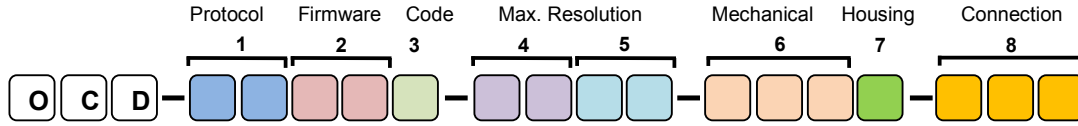


# POSITAL

## FRABA

### OPTICAL ENCODER (OCD) SELECTION GUIDE



#### 1. Protocol

**CA** – CANopen  
**DP** – ProfiBUS  
**D2** – DeviceNET  
**EE** – Ethernet IP  
**EI** – ProfiNet RT  
**EM** – Ethernet Modbus  
**E2** – Ethernet Powerlink V2  
**ET** – Ethernet TCP/IP  
**IB** – InterBUS  
**PP** – Bit Parallel Push/Pull  
**P1** – Bit Parallel + Preset  
**SL** – SSI Standard  
**S1** – SSI + Preset  
**S2** – SSI + Incremental  
**S4** – SSI +Preset Button

#### 2. Firmware

?? – Version

#### 3. Code

**B** – Binary  
**G** – Gray

#### 4. Multi-Turn Resolution

**00** – Single Turn  
**12** – 12 Bits (4096)  
**13** – 13 Bits (8192)  
**14** – 14 Bits (16,384)

#### 5. Single-Turn Resolution

**12** – 12 Bits (4096)  
**13** – 13 Bits (8192)  
**16** – 16 Bits (65,536)

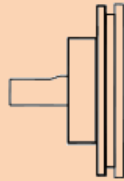


#### 6. Flange & Shaft

Blind Hollow  
**B10** – 10mm Hole  
**B12** – 12mm Hole  
**B15** – 15mm Hole



Clamp Flange  
**C10** – 10x20mm Shaft



Through Hole  
**T12** – 12mm Hole



Synchro Flange  
**S06** – 6x10mm Shaft  
**S10** – 10x20mm Shaft



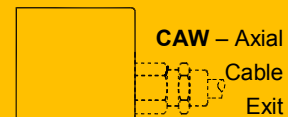
Note:

All housings are 58mm in diameter

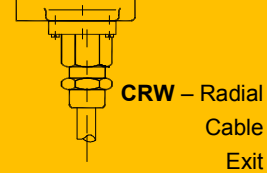
#### 7. Housing

**0** – Standard  
**S** – Shaft Seal  
**V** – Stainless Steel  
**H** – Heavy Duty  
**C** - Customized

#### 8. Connection

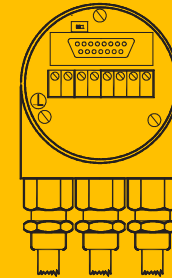


**CAW** – Axial  
 Cable  
 Exit



**CRW** – Radial  
 Cable  
 Exit

**H3P** - Connection Cap



**PA<sub>x</sub>** – Axial  
 Plug



**PR<sub>x</sub>** – Radial  
 Plug

**x** = Plug Type

**M** – 5 Pin Plug  
**9** – 9 Pin D-Sub  
**L** – 12 Pin Plug  
**P** – 16 Pin Plug  
**T** – 26 Pin Plug

AMERICAS

FRABA Inc.  
 1800 East State Street, Suite 148  
 Hamilton, NJ 08609-2020, USA  
 T +1 609 750-8705, F +1 609 750-8703  
[www.positai.com](http://www.positai.com), [info@positai.com](mailto:info@positai.com)

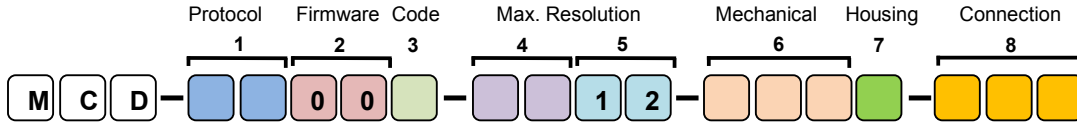
EUROPE

POSITAL GmbH  
 Carlswerkstrasse 13c  
 D-51063 Köln, GERMANY  
 T +49 221 96213-0, F +49 221 96213-20  
[www.positai.eu](http://www.positai.eu), [info@positai.eu](mailto:info@positai.eu)

ASIA

FRABA Pte. Ltd.  
 60 Alexandra Terrace,  
 #02-05 The Comtech, SINGAPORE 118502  
 T +65 6514 8880, F +65 6271 1792  
[www.positai.sg](http://www.positai.sg), [info@positai.sg](mailto:info@positai.sg)

### MAGNETIC ENCODER (MCD) SELECTION GUIDE



#### 1. Protocol

- AC – Current (Analog)
- AV – Voltage (Analog)
- CA – CANopen
- CL – CANopen Lift (DSP417)
- S1 – SSI (30VDC)
- SM – SSI (5VDC)

#### 2. Firmware

- 00 – Version

#### 3. Code

- 1 – 0 - 5V (Analog)
- 2 – 0 – 10V (Analog)
- 3 – 0.5 - 4.5V (Analog)
- 4 – 0.5 - 9.5V (Analog)
- 5 – 4 - 20mA (Analog)
- 6 – 0 - 20mA (Analog)
- B – Binary
- G - Gray

#### 4. Multi-Turn Resolution

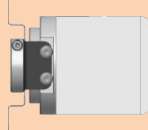
- 00 – Single Turn
- 04 – 16 Turns (Analog)
- 12 – 12 Bits (4096)
- 15 – 15 Bits (32,768)

#### 5. Single-Turn Resolution

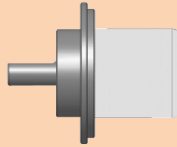
- 12 – 12 Bits (4096)

#### 6. Flange & Shaft

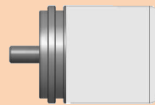
- Blind Hollow
- B06 – 6mm Hole



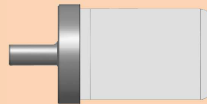
- Clamp Flange
- C10 – 10x20mm Shaft



- Synchro Flange
- S06 – 6x10mm Shaft



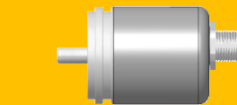
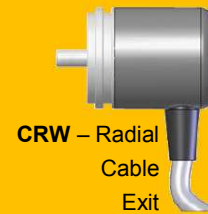
- S10 – 10x20mm Shaft (\*only available for Heavy Duty)



#### 7. Housing

- 0 – Standard
- C – Custom
- G – Heavy Duty

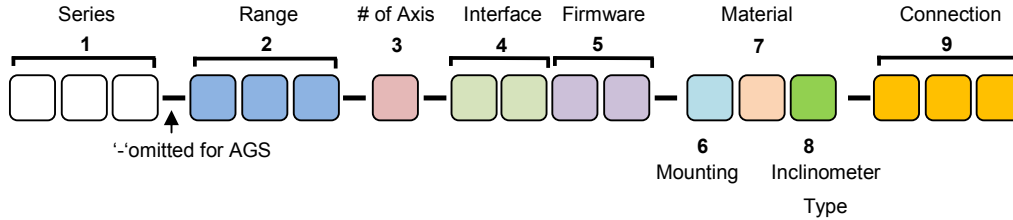
#### 8. Connection



# POSITAL

## FRABA

### INCLINOMETER (ACS/AGS) SELECTION GUIDE



#### 1. Series

**ACS** – ACCELENS (Compact Size)  
**AGS** – ANGUSENS (High Resolution)

#### 2. Range

**005** – +/- 5° (AGS)  
**015** – +/- 15° (AGS)  
**030** – +/- 30° (AGS)  
**080** – +/- 80° (ACS)  
**360** – 360° (ACS)

#### 3. # of Axis

**1** – Single Axis (Available to ACS only)  
**2** – Dual Axis

#### 4. Interface

**CA** – CANopen  
**DP** – Profibus DP (AGS)  
**S1** – SSI (ACS)  
**SV** – Voltage + RS232  
**SC** – Current + RS232  
**SO** – RS232 (AGS)  
**SP** – PWM (AGS)  
**SS** – Switch (AGS)

#### 5. Firmware

**00** – For ACS (DP, S1, SV, SC)  
**01** – For ACS (CA)  
**01** – For AGS

#### 6. Mounting

**H** – Horizontal (Dual Axis)  
**V** – Vertical (Single Axis)

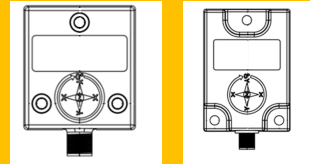
#### 7. Housing Material

**0** – Aluminum (AGS)  
**A** – Aluminum (ACS)  
**P** – Plastic (ACS)  
**E** – Industrial PBT (ACS)  
**H** – Heavy-Duty Al (ACS)

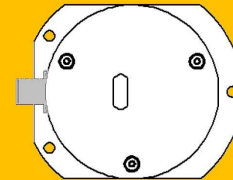
#### 8. Inclinator Series

**2** – ACSII  
**H** – High End  
 \*Omitted for AGS

#### 9. Connection



**PM** – M12 Connector (ACS – Industrial, Heavy-Duty)



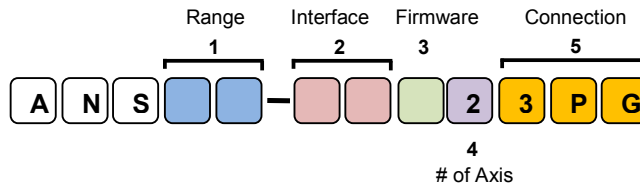
**P8M** – 8 Pin Connector (AGS)  
**CRW** – Radial Cable Exit (AGS)



# POSITAL

## FRABA

### INCLINOMETER (ANS) SELECTION GUIDE



**1. Range**  
 15 – +/- 15°  
 30 – +/- 30°

**2. Interface**  
 D2 – Device Net  
 DP – Profibus DP

**3. Firmware**  
 1 – Device Net Version  
 2 – Profibus Version

**4. # of Axis**  
 2 – Dual Axis

**5. Connection**  
 3PG – Connection Cap



Version 2011.09.22