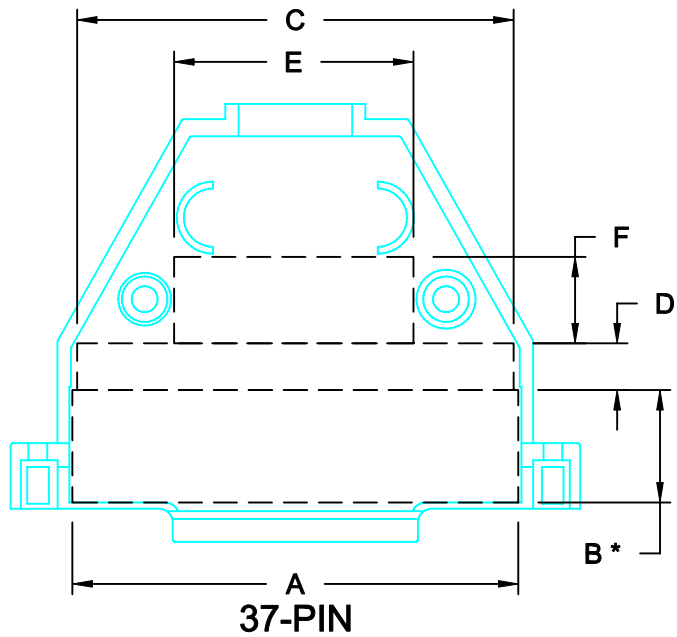
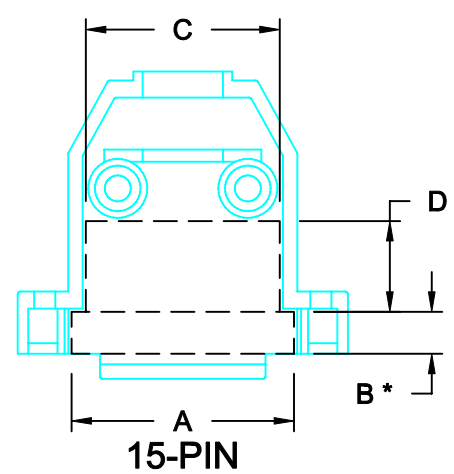
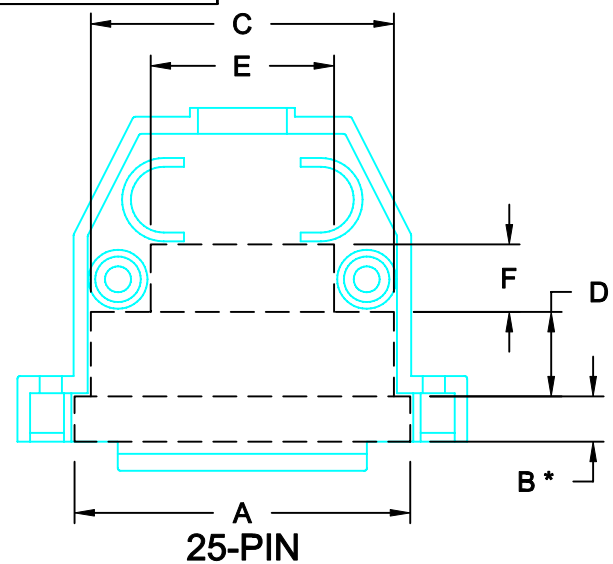
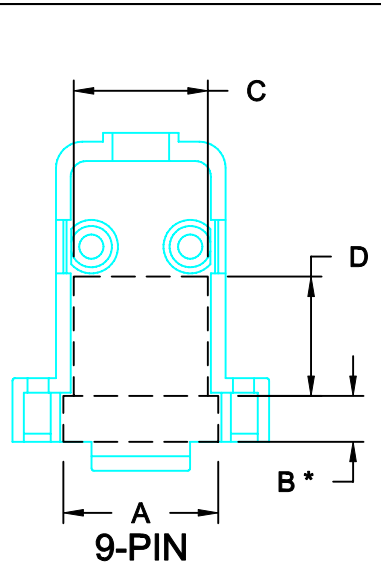


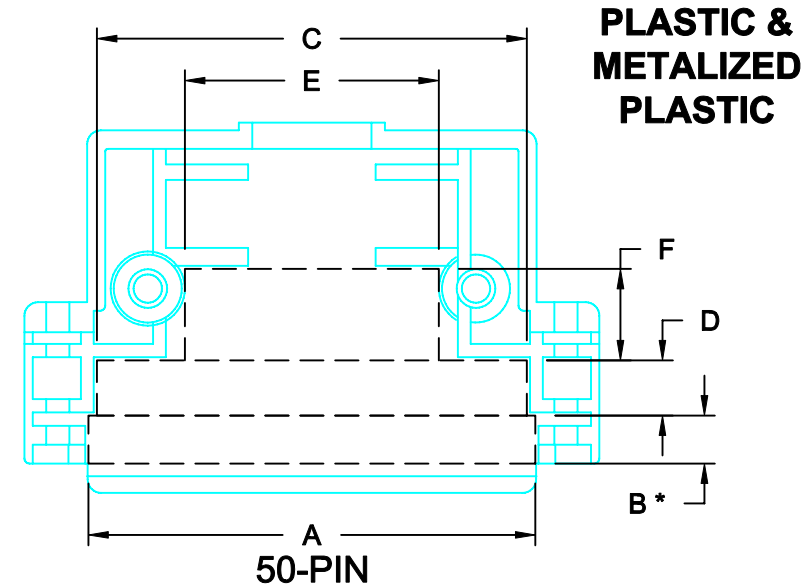
DESCRIPTION: INTERNAL DIMENSIONS - PLASTIC & METALIZED PLASTIC



		DIMENSIONS (IN.)				
		9	15	25	37	50
SEE NOTE 1.	A	0.738	1.060	1.600	2.125	2.130
	B*	0.219	0.200	0.216	0.536	0.229
	C	0.639	0.924	1.444	2.080	2.049
	D	0.569	0.433	0.403	0.223	0.236
	E			0.874	1.140	1.210
	F			0.322	0.412	0.436
SEE NOTE 2.	PCB	0.443	0.442	0.442	0.562	0.556

NOTE:

- "B" DIMENSION MEASURED FROM BACK SIDE OF CONNECTOR FLANGE
- MIN. SAFE SPACING BETWEEN BACK SHELLS FOR PCB AND MOUNTED COMPONENTS
- THESE DIMENSIONS ARE GOOD FOR THE PLASTIC AND METALIZED PLASTIC BACK SHELLS



THESE DRAWINGS AND SPECIFICATIONS ARE THE PROPERTY OF NorComp AND SHALL NOT BE REPRODUCED, COPIED OR USED AS THE BASIS FOR THE MANUFACTURE OF SALE OF APPARATUS WITHOUT WRITTEN PERMISSION.

DRAWN: C. SMITH		DATE: 07-07-06	
CHECKED: X		DATE: X	
SCALE: N.T.S.	SHEET 1	OF 1	REV 0
DWG. NO. ID - 977 SERIES			

NorComp

RoHS COMPLIANT

BACKSHELL KIT INCLUDES:

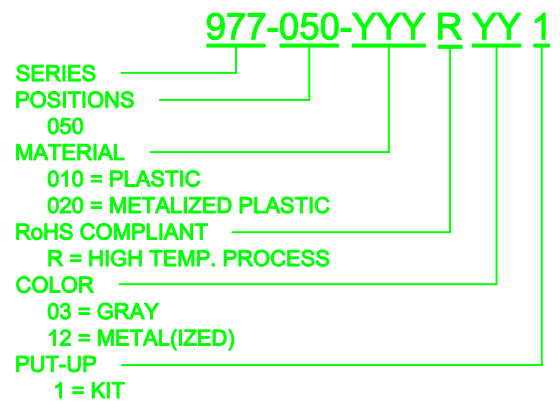
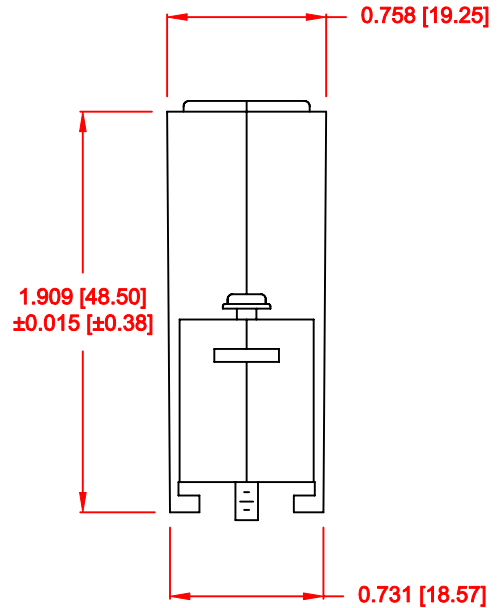
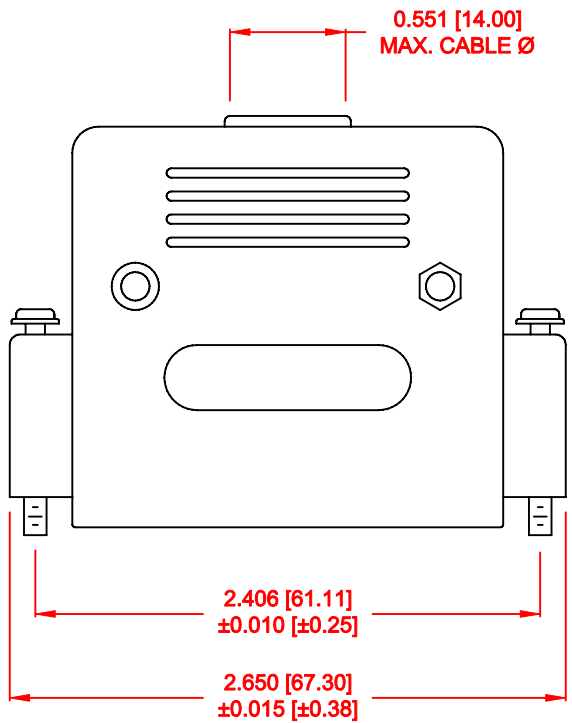
- (2) BACKSHELL HALVES
- (2) HOUSING SCREWS
- (2) HOUSING NUTS
- (2) 4-40 MOUNTING SCREWS
- (2) STRAIN RELIEF CLAMPS
- (2) STRAIN RELIEF SCREWS


METALIZED PLASTIC:

MATERIAL: ABS HIGH TEMPERATURE PLASTIC 94HB
 METALIZED PLATING: CHROME

PLASTIC:

MATERIAL: ABS HIGH TEMPERATURE PLASTIC 94HB

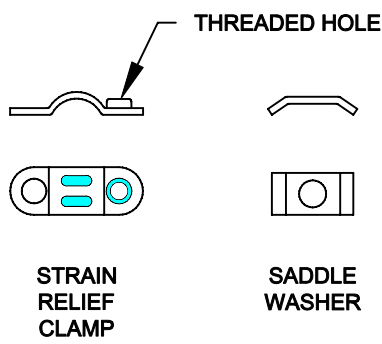
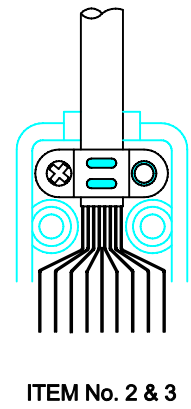
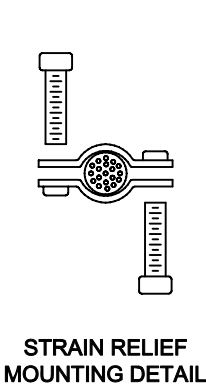
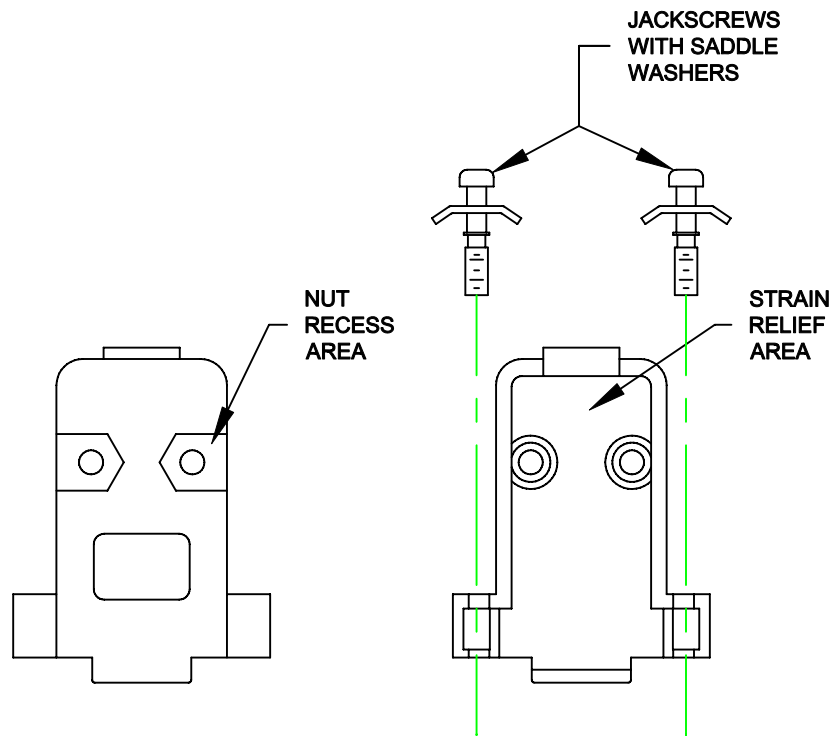


	THESE DRAWINGS AND SPECIFICATIONS ARE THE PROPERTY OF NorComp AND SHALL NOT BE REPRODUCED, COPIED OR USED AS THE BASIS FOR THE MANUFACTURE OR SALE OF APPARATUS WITHOUT WRITTEN PERMISSION.		DRAWN: C. SMITH	DATE: 04-10-06	
	<h1>NorComp</h1>			CHECKED:	DATE:
SCALE:				SHEET 1 OF 1	REV 2
DWG NO. 977-050-0Y0RYY1					

ASSEMBLY INSTRUCTIONS:

1. PREPARE CABLE ENDS, CONNECT TO CONNECTOR
2. CLAMP STRAIN RELIEF ONTO CABLE MAKING SURE CABLE JACKET IS BELOW STRAIN RELIEF
3. PLACE STRAIN RELIEF INSIDE STRAIN RELIEF AREA OF ONE HOOD
4. INSERT THE JACKSCREWS IN THE SADDLE WASHERS. PLACE THE JACKSCREWS INTO THE HOOD WITH THE CABLE
5. PLACE THE OTHER HALVE OF THE HOOD ON TOP OF THE FIRST HALF, MAKING SURE NO WIRES ARE PINCHED
6. HOLDING THE HOODS TOGETHER, INSERT THE MOUNTING SCREWS THROUGH THE HOODS IN OPPOSITE DIRECTIONS. TIGHTEN THE TWO HALVES TOGETHER

9, 15, 25 & 37 PIN



RoHS COMPLIANT

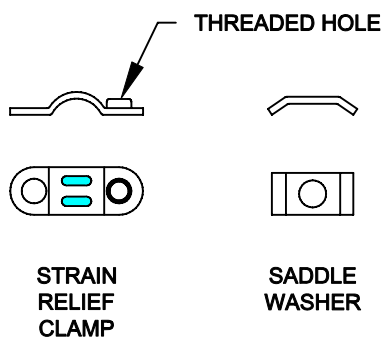
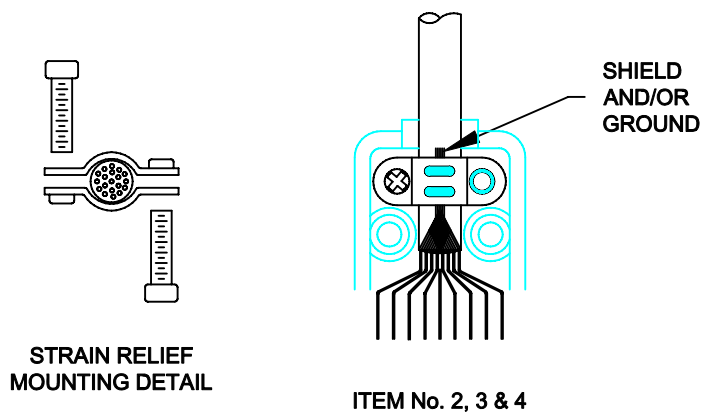
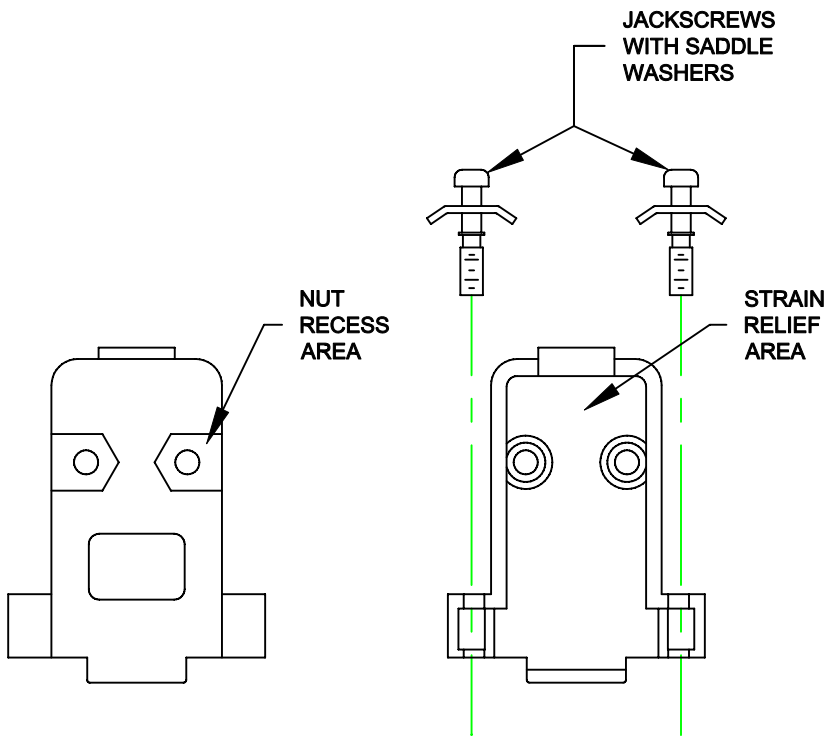
PLASTIC

	THESE DRAWINGS AND SPECIFICATIONS ARE THE PROPERTY OF NorComp AND SHALL NOT BE REPRODUCED, COPIED OR USED AS THE BASIS FOR THE MANUFACTURE OF SALE OF APPARATUS WITHOUT WRITTEN PERMISSION.		DRAWN: C. SMITH	DATE: 03-29-06
			CHECKED: X	DATE: X
<h1>NorComp</h1>		SCALE: N.T.S.	SHEET 1 OF 4	REV 0
		DWG NO. BACKSHELL - 977 SERIES		

ASSEMBLY INSTRUCTIONS:

1. PREPARE CABLE ENDS, CONNECT TO CONNECTOR
2. CLAMP STRAIN RELIEF ONTO CABLE MAKING SURE CABLE JACKET IS BELOW STRAIN RELIEF
3. IF CABLE IS SHIELDED, FOLD SHIELD AND/OR GROUND WIRE BACK UNDER STRAIN RELIEF BEFORE CLAMPING. CUT ANY EXCESS WIRE FLUSH WITH THE TOP OF THE STRAIN RELIEF
4. PLACE STRAIN RELIEF INSIDE STRAIN RELIEF AREA OF ONE HOOD
5. INSERT THE JACKSCREWS IN THE SADDLE WASHERS. PLACE THE JACKSCREWS INTO THE HOOD WITH THE CABLE
6. PLACE THE OTHER HALVE OF THE HOOD ON TOP OF THE FIRST HALF, MAKING SURE NO WIRES ARE PINCHED
7. HOLDING THE HOODS TOGETHER, INSERT THE MOUNTING SCREWS THROUGH THE HOODS IN OPPOSITE DIRECTIONS. TIGHTEN THE TWO HALVES TOGETHER

9, 15, 25 & 37 PIN



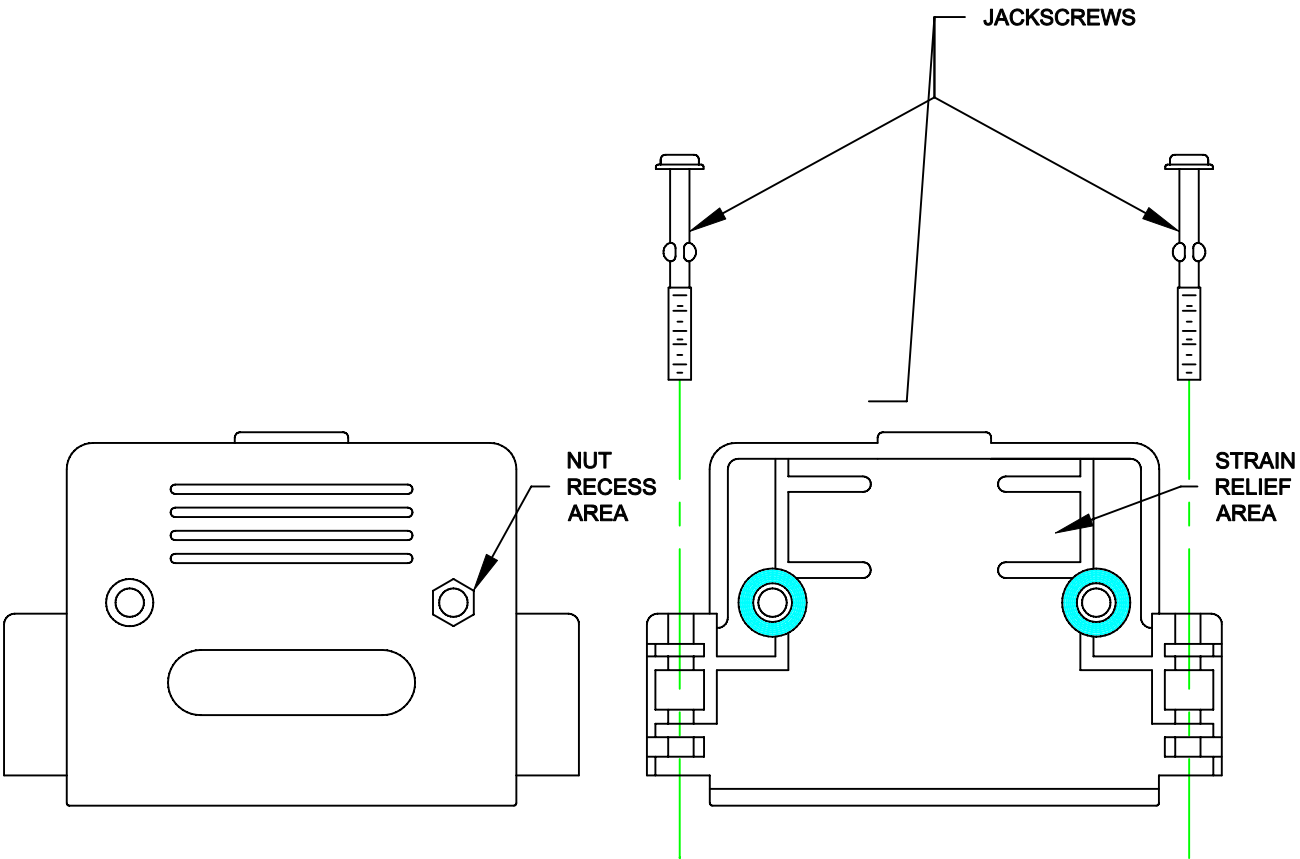
RoHS COMPLIANT

METALIZED PLASTIC

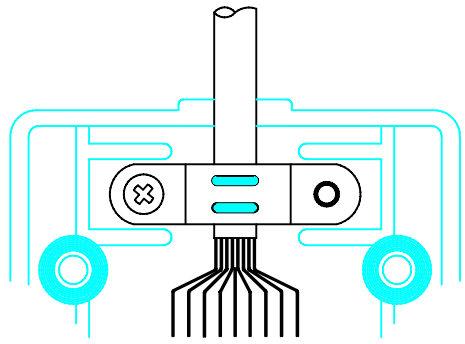
	THESE DRAWINGS AND SPECIFICATIONS ARE THE PROPERTY OF NorComp AND SHALL NOT BE REPRODUCED, COPIED OR USED AS THE BASIS FOR THE MANUFACTURE OF SALE OF APPARATUS WITHOUT WRITTEN PERMISSION.		DRAWN: C. SMITH	DATE: 03-29-06
			CHECKED: X	DATE: X
<h1>NorComp</h1>		SCALE: N.T.S.	SHEET 2 OF 4	REV 0
		DWG NO. BACKSHELL - 977 SERIES		

ASSEMBLY INSTRUCTIONS:

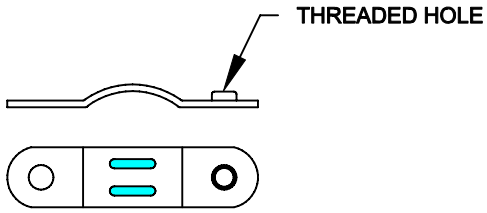
1. PREPARE CABLE ENDS, CONNECT TO CONNECTOR
2. CLAMP STRAIN RELIEF ONTO CABLE MAKING SURE CABLE JACKET IS BELOW STRAIN RELIEF
3. PLACE STRAIN RELIEF INSIDE STRAIN RELIEF AREA OF ONE HOOD
4. PLACE THE JACKSCREWS INTO THE HOOD WITH THE CABLE
5. PLACE THE OTHER HALF OF THE HOOD ON TOP OF THE FIRST HALF, MAKING SURE NO WIRES ARE PINCHED
6. HOLDING THE HOODS TOGETHER, INSERT THE MOUNTING SCREWS THROUGH THE HOODS IN OPPOSITE DIRECTIONS. TIGHTEN THE TWO HALVES TOGETHER



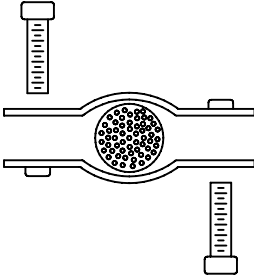
50 PIN



ITEM No. 2 & 3



STRAIN RELIEF CLAMP



STRAIN RELIEF MOUNTING DETAIL

RoHS COMPLIANT

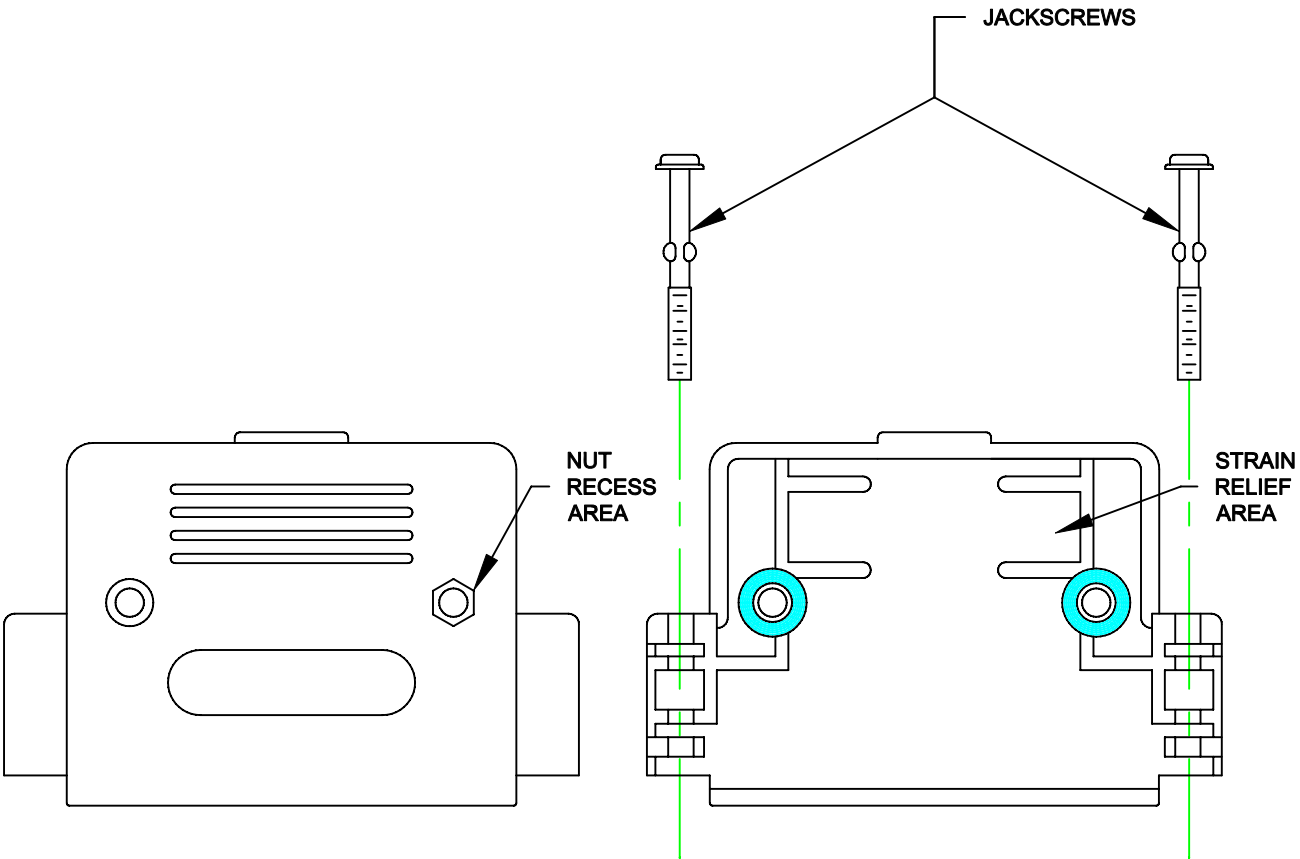
PLASTIC

	THESE DRAWINGS AND SPECIFICATIONS ARE THE PROPERTY OF NorComp AND SHALL NOT BE REPRODUCED, COPIED OR USED AS THE BASIS FOR THE MANUFACTURE OF SALE OF APPARATUS WITHOUT WRITTEN PERMISSION.		DRAWN: C. SMITH	DATE: 04-10-06
			CHECKED: X	DATE: X
NorComp		SCALE: N.T.S.	SHEET 3	OF 4
		DWG NO. BACKSHELL - 977 SERIES		

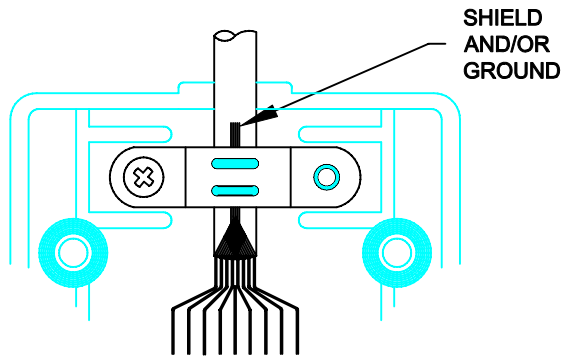
DESCRIPTION: BACKSHELL ASSEMBLY INSTRUCTIONS - METALIZED PLASTIC

ASSEMBLY INSTRUCTIONS:

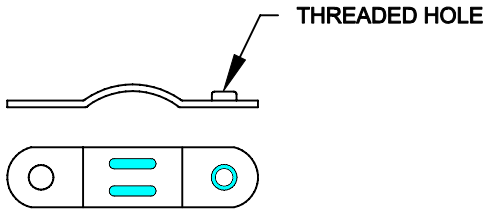
1. PREPARE CABLE ENDS, CONNECT TO CONNECTOR
2. CLAMP STRAIN RELIEF ONTO CABLE MAKING SURE CABLE JACKET IS BELOW STRAIN RELIEF
3. IF CABLE IS SHIELDED, FOLD SHIELD AND/OR GROUND WIRE BACK UNDER STRAIN RELIEF BEFORE CLAMPING. CUT ANY EXCESS WIRE FLUSH WITH THE TOP OF THE STRAIN RELIEF
4. PLACE STRAIN RELIEF INSIDE STRAIN RELIEF AREA OF ONE HOOD
5. PLACE THE JACKSCREWS INTO THE HOOD WITH THE CABLE
6. PLACE THE OTHER HALVE OF THE HOOD ON TOP OF THE FIRST HALF, MAKING SURE NO WIRES ARE PINCHED
7. HOLDING THE HOODS TOGETHER, INSERT THE MOUNTING SCREWS THROUGH THE HOODS IN OPPOSITE DIRECTIONS. TIGHTEN THE TWO HALVES TOGETHER



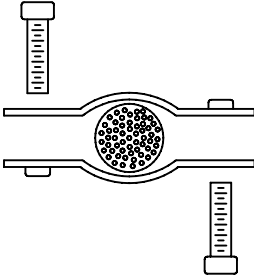
50 PIN



ITEM No. 2, 3 & 4



STRAIN RELIEF CLAMP



STRAIN RELIEF MOUNTING DETAIL

RoHS COMPLIANT

METALIZED PLASTIC

	THESE DRAWINGS AND SPECIFICATIONS ARE THE PROPERTY OF NorComp AND SHALL NOT BE REPRODUCED, COPIED OR USED AS THE BASIS FOR THE MANUFACTURE OF SALE OF APPARATUS WITHOUT WRITTEN PERMISSION.		DRAWN: C. SMITH	DATE: 04-10-06
			CHECKED: X	DATE: X
NorComp		SCALE: N.T.S.	SHEET 4	OF 4
		DWG NO. BACKSHELL - 977 SERIES		

NorComp

Quick Reference Guide to D-Sub Backshells

Series	Material			Cable Entry							Hardware			Strain Relief type	Standard	High Density
	70db Die Cast	60db Metalized	Plastic	180°	90°	60°	45°	40°	35°	3-way	Standard		Other Hardware types available		Connector Size	Connector Size
											4-40 std. screws	4-40 thumb-screws				
950		x	x			x					x		M3	Mechanical	9,15,25,37	15,26,44,62
951		x	x			x						x	M3	Mechanical	9,15,25,37	15,26,44,62
952	x			x								x	M2.5-M3-M2.6	Mechanical	9,15,25,37	15,26,44,62
953	x									x		x	M2.5-M3-M2.6	Mechanical	9,15,25,37	15,26,44,62
954	x						x						Slide Lock	Compression	9,15,25,37	15,26,44,62
955	x	x	x								x		Quick Lock	Mechanical	9,15,25,37	15,26,44,62
956		x	x	x								x		Compression	9, 15, 25	15,26,44
957		x	x	x								x		N/A	9,15,25, 9-to-25	15,26,44, 15-to-44
958			x	x								Female Screw Locks		N/A	9, 15, 25	15,26,44
970	x	x	x	x								x	x	Compression	9,15,25,37	15,26,44,62
971	x	x	x				x					x	x	Compression	9,15,25,37	15,26,44,62
972			x	x								x		Mechanical	9,15,25,37	15,26,44,62
973		x	x	x								x		Mechanical	9,15,25,37	15,26,44,62
974		x	x			x						x		Mechanical	9,15,25,37	15,26,44,62
975		x	x								x	x		Mechanical	9,15,25,37	15,26,44,62
976		x	x	x								x		Compression	9,15,25,37	N/A
977		x	x	x								x	x	Mechanical	9,15,25,37,50	15,26,44,62,78
978		x	x	x								x	x	Compression	9,15,25,37,50	15,26,44,62,78
979	x	x	x	x								x	x	Compression	9,15,25,37,50	15,26,44,62,78
981	x					x						x	x	Compression	9,15,25	15,26,44
982		x	x	x			x					x		Mechanical	9,15,25,37,50	15,26,44,62,78
983		x	x	x								x	x	Mechanical	9,15,25,37,50	15,26,44,62,78
993		x	x			x							x	Mechanical	9,25	15,44
994	x			x								x		Mechanical	9,15,25	15,26,44

New

NorComp Backshell Part Number Key:

Series Positions Material RoHS Color Put-up

970 - 025 - 040 R 01 1

Example: 970-025-040R011

9 Pos. Standard & 15 Pos. High Density use 9 Pos. Backshells
 15 Pos. Standard & 26 Pos. High Density use 15 Pos. Backshells
 25 Pos. Standard & 44 Pos. High Density use 25 Pos. Backshells
 37 Pos. Standard & 62 Pos. High Density use 37 Pos. Backshells
 50 Pos. Standard & 78 Pos. High Density use 50 Pos. Backshells