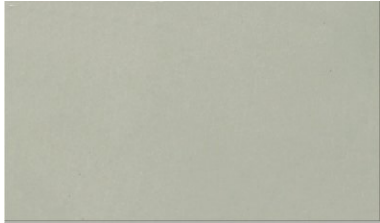


Ninigi

THERMALLY CONDUCTIVE COMPOUNDS D A T A S H E E T

SILICONE SHEETS FOR PADS



Specification:

- 1) Breakdown voltage: ≥ 5 kV
- 2) Thermal conductance: 1 W/mK
- 3) Operating temperature range:
-60°C ~ 200°C
- 4) Conformity with: UL-94V-0

SILI150X220-G

Notes:

None – without glue
G – with glue

Sheet Dimensions:

150X220 – 150 x 220 mm
300X300 – 300 x 300 mm

| SERIES NO. | THICKNESS |
|----------------------|------------------|
| SILI150X220 | 0.23 mm |
| SILI150X220-G | 0.23 mm |
| SILI300X300 | 0.3 mm |
| SILI300X300-G | 0.3 mm |