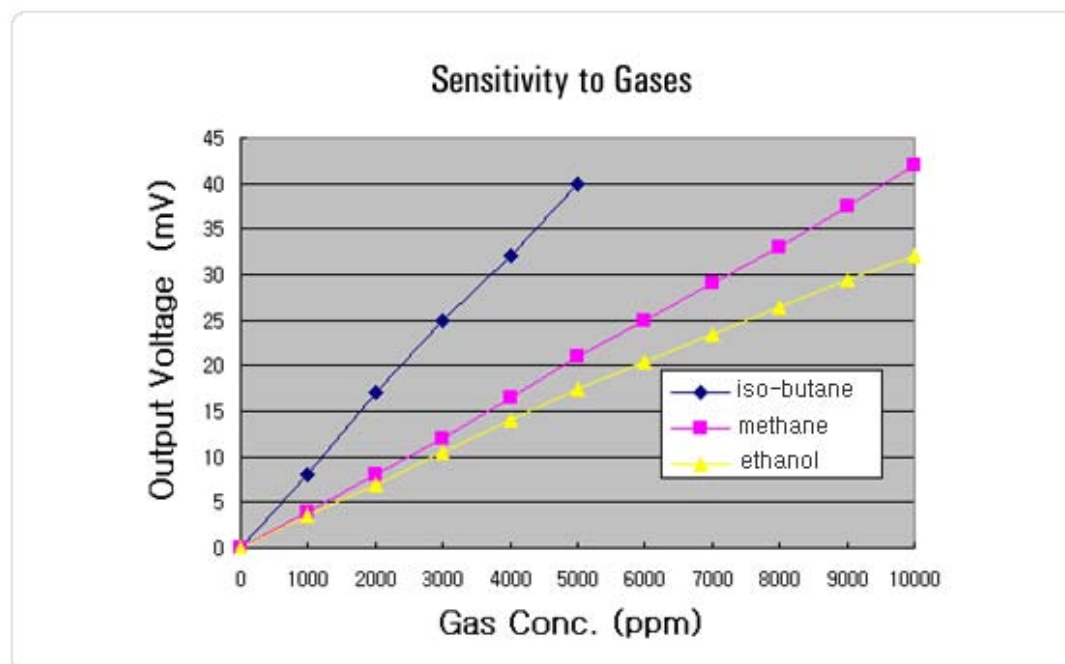


Gas Sensor DSG-301

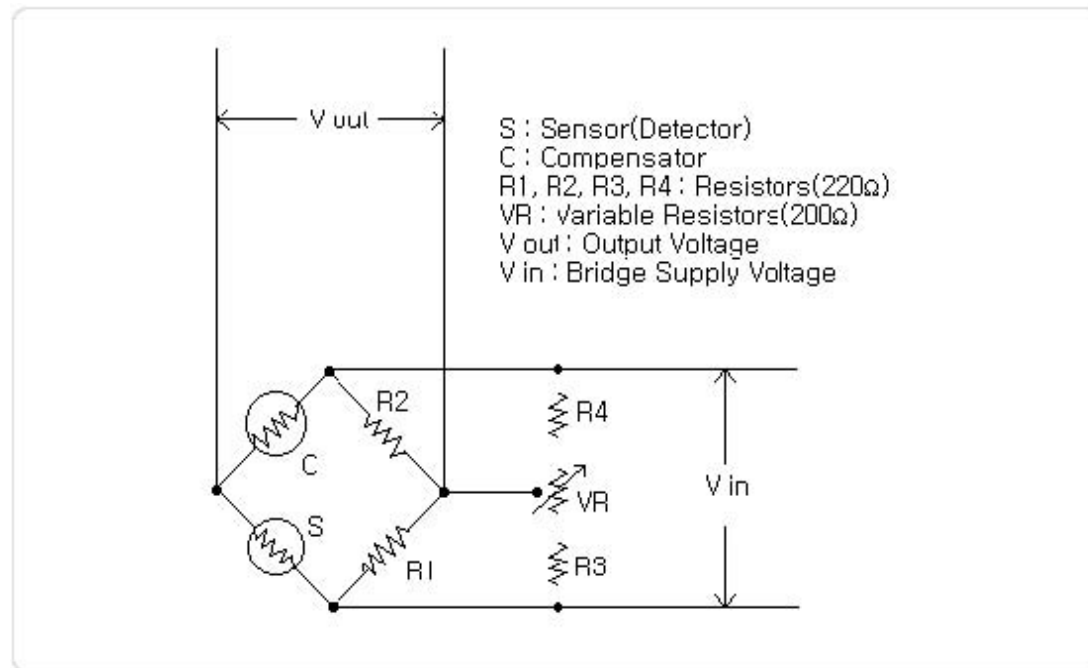
● Specifications

Gases Detected	Most combustible gases
Range	0 ~ 100% LEL
Application	General use
Operating Voltage	2.50 ± 0.1 V
Current	190 mA ± 10 mA
Output Sensitivity	10~15 mV / CH ₄ 3000ppm 10~15 mV / C ₄ H ₁₀ 1500ppm
Response Time	< 10 seconds
Ambient Temp. Range	-20 ~ 50 °C
Storage Temp. Range	-30 ~ 70 °C

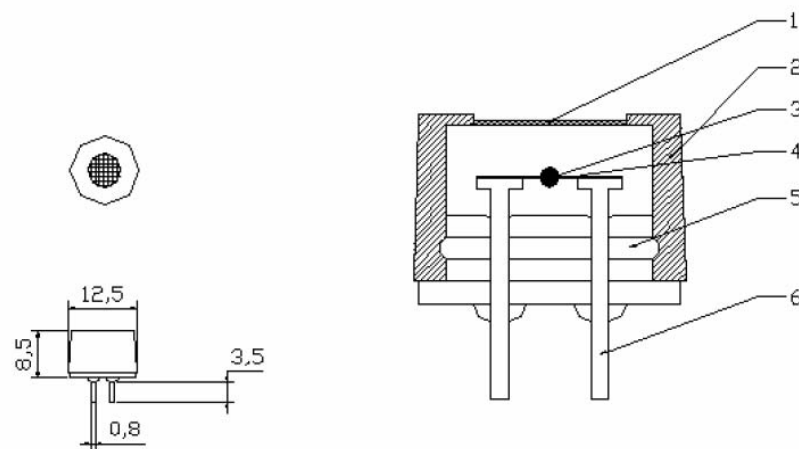
● Sensitivity Data



● Basic Measuring Circuit



● Structure and Materials



1	Flame proof SUS316L mesh
2	Cover Nylon66
3	Sensor element Catalyst
4	Pt wire
5	Body Reinforced Nylon66
6	Lead pin Nickel