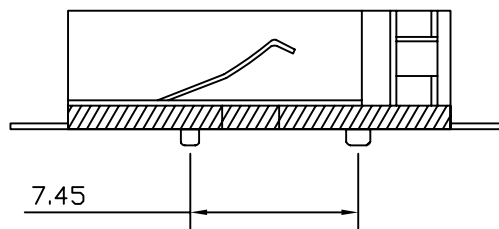
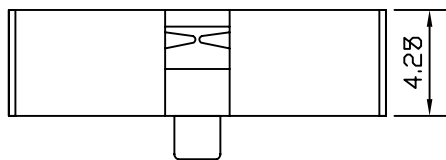


P. C. B LAYOUT



SECTION A-A

NOTES:

1. MATERIAL:
 - a. HOUSING: PPS UL94 V-0
 - b. CONTACT: PHOSPHOR BRONZE.
(SURFACE PLATING: Sn100u" + Ni50u")
2. ELECTRIC:
 - a. CONTACT RESISTANCE: 30 MLLIOHMS MAX
 - b. INSULATION RESISTANCE: 1000MEGA OHMS MIN
 - c. DIELECTNIC VOLTAGE: 500V AC ONE SEC LEVEL
 - d. OPERATING TEMPERATURE: -55°C-105°C
3. Applicable : Battery CR1220

BTH-V-12-LF

LEADFREE

RoHS Compliant

MORETHANALL
CONNECTORS
ASSEMBLIES

PART NO. BTH-V-12

DWG NO. BTH-V-12

CHECKED BY CY

TOLERANCES ARE

DESCRIPTION:

BATTERY BOX
HOLDER

FILE NO.

DRAWING BY

.X ± 0.2
.XX ±
.XXX ±
AWG

AREA

REVISIONS

HK

DATE

焯倫股份有限公司

UNIT / mm

SCALE 1:1

PROJECTION

