

FEATURES AND SPECIFICATIONS

Features and Benefits

- Crimp equivalent of 70156
- Wire range 14 to 20 AWG and 18 to 22 AWG available
- Wire-to-board and wire-to-wire connector system
- Crimp version
- Wire connectors have end grips for easy unmating
- Detents provide firm positive fit

Reference Information

Product Specification: PS-8981-4M/4P

Packaging: Terminal—Reel

Housing—Bag

UL File No.: E29179

CSA File No.: LR19980A

Mates With: **8981** 4M/4V/4SM/4R

Designed In: Inches

Electrical

Voltage: 250V AC

Current:

AWG	14	16	18	22
Amperes	10.0	10.0	8.0	6.0

Contact Resistance: 25mΩ max.

Dielectric Withstanding Voltage: 250V AC

Insulation Resistance: 1000 MΩ min.

Mechanical

Contact Retention to Housing: 44.13N (9.92 lb) min.

Mating Force: 98.07N (22.05 lb) max.

Unmating Force: 24.52N (5.51 lb) min.

Durability: 50 cycles

Physical

Housing: Natural nylon, UL 94V-0

Contact: Phosphor Bronze or Brass (See Table)

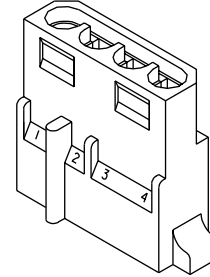
Plating: Tin over Copper

Operating Temperature: -10 to +85°C



5.08mm (.200") Pitch Disk Drive Power Connection System Crimp Terminal and Housing

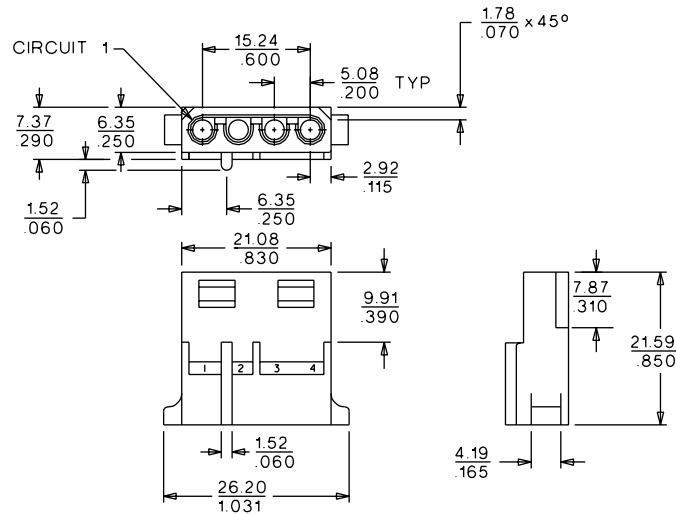
8981



Power Connectors

F

CATALOG DRAWING (FOR REFERENCE ONLY)



ORDERING INFORMATION AND DIMENSIONS

Housing Order No.
15-24-4048

Terminal			
Order No.	Packaging	Contact	Wire Gauge
02-08-1201	Chain	Phosphor Bronze	14-20 AWG
02-08-1202	Loose	Phosphor Bronze	14-20 AWG
02-08-1215	Chain	Brass	14-20 AWG
02-08-1216	Loose	Brass	14-20 AWG