

FEATURES AND SPECIFICATIONS

Features and Benefits

- Flat oval and round cable
- Two terminal options: Round and flat top
- To terminal with line cords to PE-75 REA specifications

Reference Information

Product Specification: PS-87522-0001
 Packaging: Bag
 UL File No.: E107635
 Mates With: FCC 68 and RJ 45 Jacks
 Designed In: Millimeters

Electrical

Voltage: 125V DC max.
 Current: 1.5A max.
 Contact Resistance: 25mΩ max.
 Dielectric Withstanding Voltage: 1000V AC
 Insulation Resistance: 500 MΩ min.

Mechanical

Cable to Plug Tensile Strength: 80N (17.95 lb)
 Durability: 200 cycles

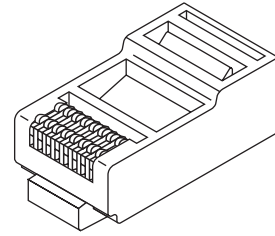
Physical

Housing: Natural polycarbonate, UL 94V-2
 Contact: Phosphor Bronze
 Plating: 1.27μm (50μ") min. Gold in contact area over Nickel overall
 Operating Temperature: -40 to +60°C

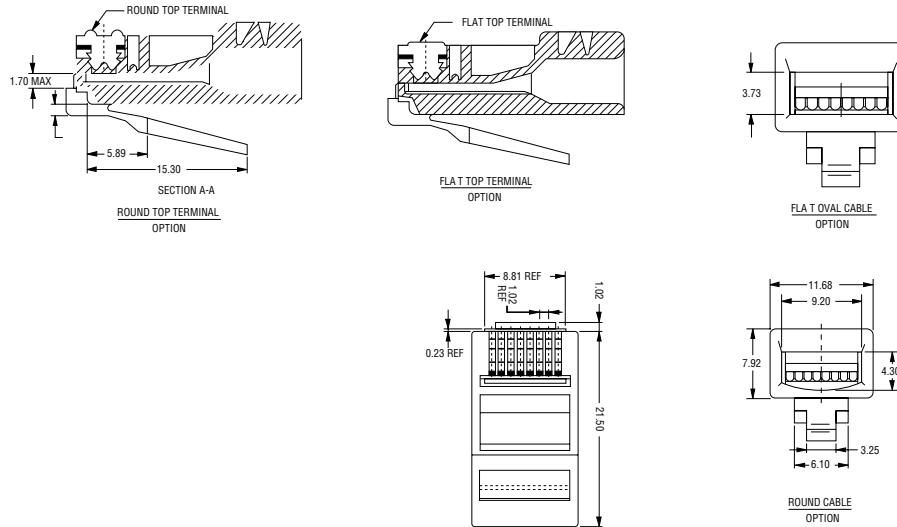
molex® Modular Plug

87522

**RJ-45/FCC 68
 Long Body, 8 Position**



CATALOG DRAWING (FOR REFERENCE ONLY)



Modular Plugs and Jacks

0

ORDERING INFORMATION

Circuits	Loaded Contacts	Order No.			
		Round Cable		Flat Oval Cable	
		Flat Top	Round Top	Flat Top	Round Top
8	4	87522-4002	87522-4007	87522-4102	87522-4107
8	6	87522-6002	87522-6007	87522-6102	87522-6107
8	8	87522-8002	87522-8007	87522-8102	87522-8107

Note: Please contact Molex for 0.76μm (30μ") min. Gold in contact area over Nickel overall, 0.38μm (15μ") min. Gold in contact area over Nickel overall