

## FEATURES AND SPECIFICATIONS

### Features and Benefits

- Sizes 2 to 16 circuits
- Two friction locks
- Positive polarization
- Pull tab for easy insertion/extraction

### Reference Information

Product Specification: PS-87369  
 Packaging: Tube or tape and reel  
 Accepts: [50212](#) crimp terminal  
 Mates With: [89400](#) and [89401](#) single row headers  
 Designed In: Millimeters

### Electrical

Voltage: 250V AC  
 Current: 2.0A max.  
 Contact Resistance: 40mΩ max.  
 Dielectric Withstanding Voltage: 500V AC/1 min.  
 Insulation Resistance: 1000 MΩ min.

### Mechanical

Contact Insertion Force: 1kg max.  
 Contact Retention to Housing: 1kg min.  
 Wire Pull-Out Force: 3kg max.  
 Durability: 30 cycles

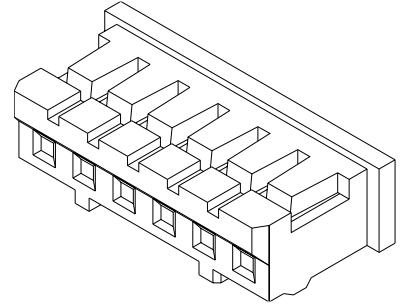
### Physical

Housing: 6/6 nylon, UL 94V-0  
 Contact: Phosphor Bronze  
 Operating Temperature: -25 to +85°C

# molex® 2.00mm (.079") Pitch Wire-to-Board Crimp Housing

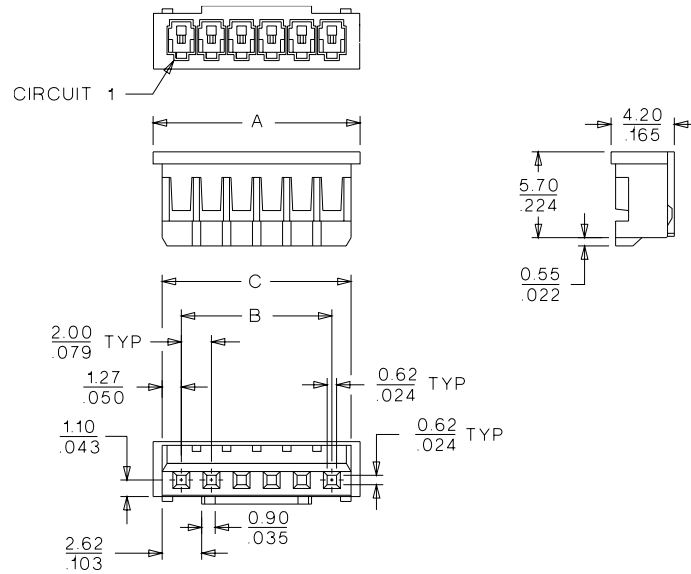
## 87369

## Single Row



**B**  
2.00 to 2.50mm (.079 to .098") Pitch

## CATALOG DRAWING (FOR REFERENCE ONLY)



## ORDERING INFORMATION AND DIMENSIONS

Circuits	Order No.	Dimension		
		A	B	C
2	87369-020X	5.74 (.226)	2.00 (.079)	4.54 (.179)
3	87369-030X	7.74 (.305)	4.00 (.157)	6.54 (.257)
4	87369-040X	9.74 (.383)	6.00 (.236)	8.54 (.336)
5	87369-050X	11.74 (.462)	8.00 (.315)	10.54 (.415)
6	87369-060X	13.74 (.541)	10.00 (.394)	12.54 (.494)
7	87369-070X	15.74 (.620)	12.00 (.472)	14.54 (.572)
8	87369-080X	17.74 (.698)	14.00 (.551)	16.54 (.651)
9	87369-090X	19.74 (.777)	16.00 (.630)	18.54 (.730)
10	87369-100X	21.74 (.856)	18.00 (.709)	20.54 (.809)
11	87369-110X	23.74 (.935)	20.00 (.787)	22.54 (.887)
12	87369-120X	25.74 (1.013)	22.00 (.866)	24.54 (.966)
13	87369-130X	27.74 (1.092)	24.00 (.945)	26.54 (1.045)
14	87369-140X	29.74 (1.171)	26.00 (1.024)	28.54 (1.124)
15	87369-150X	31.74 (1.250)	28.00 (1.102)	30.54 (1.202)
16	87369-160X	33.74 (1.328)	30.00 (1.181)	32.54 (1.281)

Replace X with color option (0 to 5)	
0	Natural
1	Black
2	Red
3	Yellow
4	Blue
5	Green