

## FEATURES AND SPECIFICATIONS

### Features and Benefits

- Dual opposing beam contact
- Board lock option
- Flux proof option
- Coding option
- Solder tails for 1.6mm (.062") and 2.4mm (.094") PCBs available

### Reference Information

Product Specification: PS-85052-0001

Packaging: Tray

UL File No.: E29179

CSA File No.: LR19980-390

Mates With:

**85003**—Right angle male style C

**85013**—Straight male style R

### Electrical

Electrical Current: 1.5A

Contact Resistance: 20mΩ max.

### Mechanical

Mating Force: .93N max.

### Physical

Housing: Glass-filled polyester, UL 94V-0

Contact: Copper Alloy

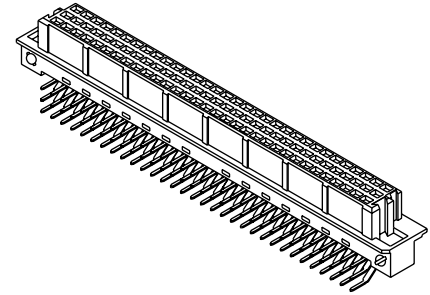
Operating Temperature: -55 to +125°C



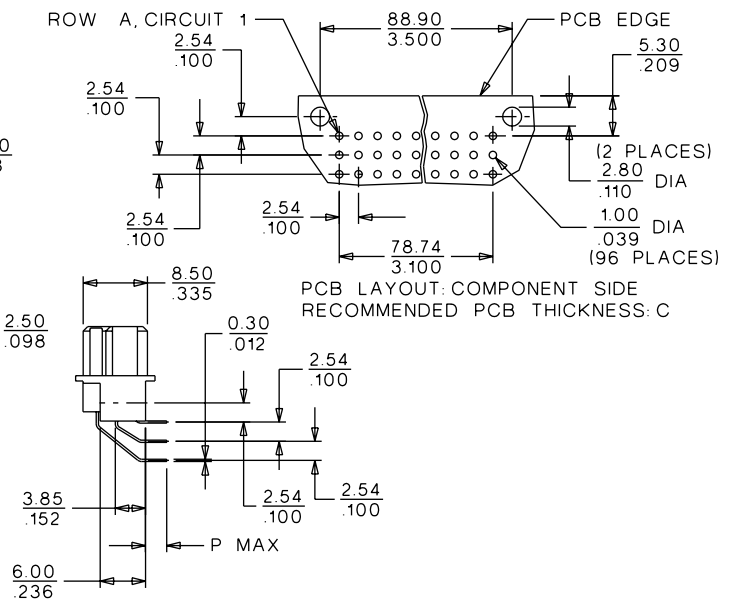
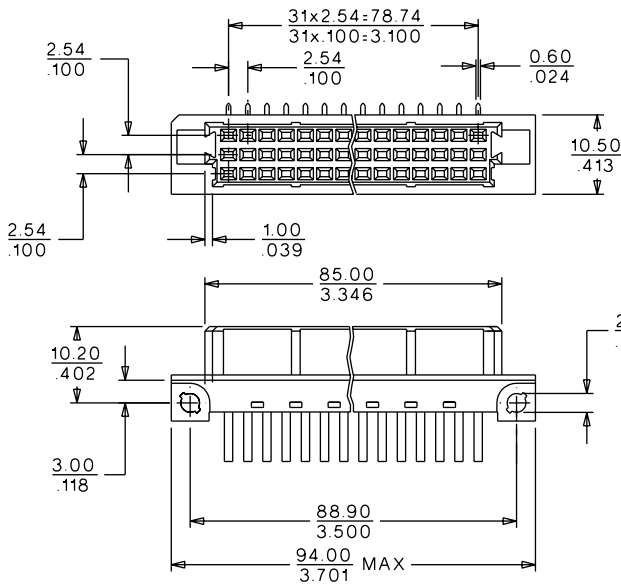
# 2.54mm (.100") Pitch DIN 41612/IEC 603-2 Connector

## 85052

## Female Style R



## CATALOG DRAWING (FOR REFERENCE ONLY)



## ORDERING INFORMATION AND DIMENSIONS

Circuits	Order No.		Contact Loading	Rows	Solder Tail Dimension P	Option(s)
	Performance Level*					
	1	2				
32	85052-0696	85052-0206	Even only	a, c	3.0 (.118)	Coding
		85052-0141				Board locks
		85052-0658				
64	85052-0189	85052-0000	Full	a, c	3.0 (.118)	Coding
	85052-0385	85052-0024				Flux-proof
	85052-0713	85052-0103				Board locks
	85052-0529	85052-0139				
						3.4 (.133)
96	85052-0191	85052-0036	Full	a, b, c	3.0 (.118)	Coding
	85052-0282	85052-0048				Board locks
	85052-0725	85052-0311				Flux-proof
	85052-0397	85052-0543				
		85052-0050				3.4 (.133)
		85052-0074				

For other contact Molex

\* Performance levels based on test conditions per DIN 41612, part 5:

1: >500 mating cycles. 10 day industrial environment (S02)

2: >400 mating cycles. 4 day industrial environment (S02)

