

**FEATURES AND SPECIFICATIONS**

**Features and Benefits**

- Dual opposing beam contact
- Board lock option
- Flux-proof option
- Solder tails for 1.6mm (.062") and 2.4mm (.094") PCBs available

**Reference Information**

Product Specification: PS-85052-0001

Packaging: Tray

UL File No.: E29179

CSA File No.: LR19980-390

Mates With:

**85003**—Right angle male style C/2

**85013**—Straight male style R/2

**Electrical**

Electrical Current: 1.5A

Contact Resistance: 20mΩ max.

**Mechanical**

Mating Force: 0.93N max.

**Physical**

Housing: Glass-filled polyester, UL 94V-0

Contact: Copper Alloy

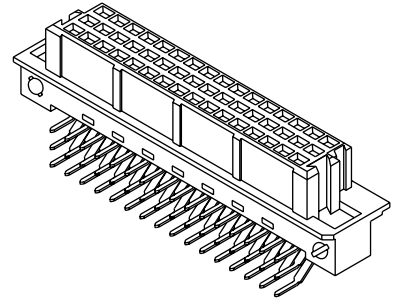
Operating Temperature: -55 to +125°C



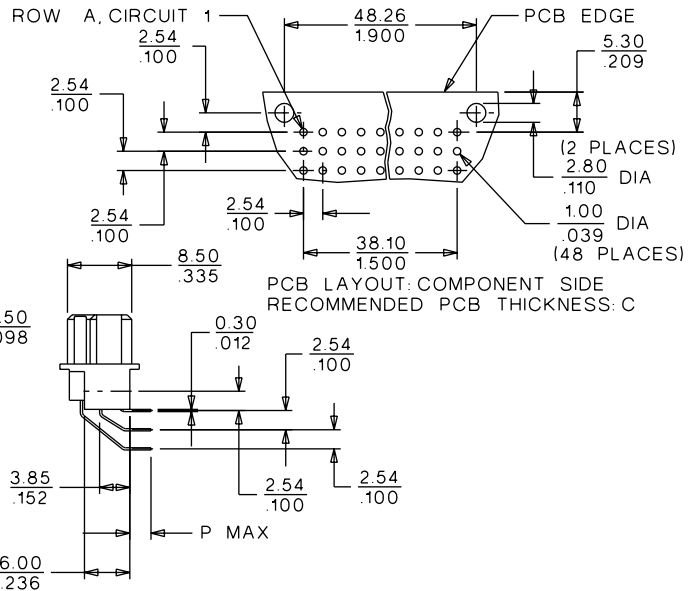
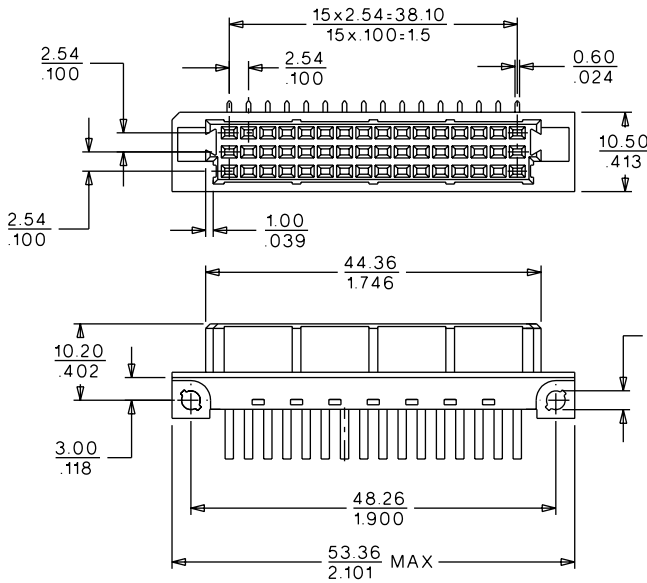
**2.54mm (.100") Pitch  
DIN 41612/IEC 603-2  
Connector**

**85052**

**Female  
Style R/2**



**CATALOG DRAWING (FOR REFERENCE ONLY)**



**ORDERING INFORMATION AND DIMENSIONS**

Circuits	Order No.		Contact Loading	Rows	Solder Tail Dimension P	Option(s)
	Performance Level*					
	1	2				
32	85052-0608	85052-0622	Full	a, c	3.0 (.118)	Board locks
		85052-0842				
48	85052-0593	85052-0165	Full	a, b, c	3.0 (.118)	Board locks
		85052-0830				

For other versions contact Molex

\* Performance levels based on test conditions per DIN 41612, part 5:

1: >500 mating cycles. 10 day industrial environment (S02)

2: >400 mating cycles. 4 day industrial environment (S02)