

FEATURES AND SPECIFICATION

Features and Benefits

- Dual opposing beam contact
- Performance levels 1 and 2
- Flux proof option
- Board lock option
- Solder tails for 1.6mm (.062") and 3.2mm (.125") PCBs

Reference Information

Product Specification: PS-85042-0001
 Packaging: Box
 UL File No.: E29179
 CSA File No.: LR19980-390
 Mates With: [85001](#)—Right angle male style B

Electrical

Current: 1.5A
 Contact Resistance: 20mΩ max.

Mechanical

Mating Force: 0.93N max.

Physical

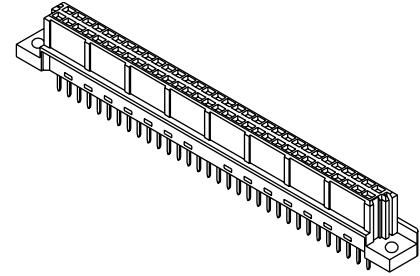
Housing: Glass-filled polyester, UL 94V-0
 Contact: Copper Alloy
 Operating Temperature: -55 to +125°C



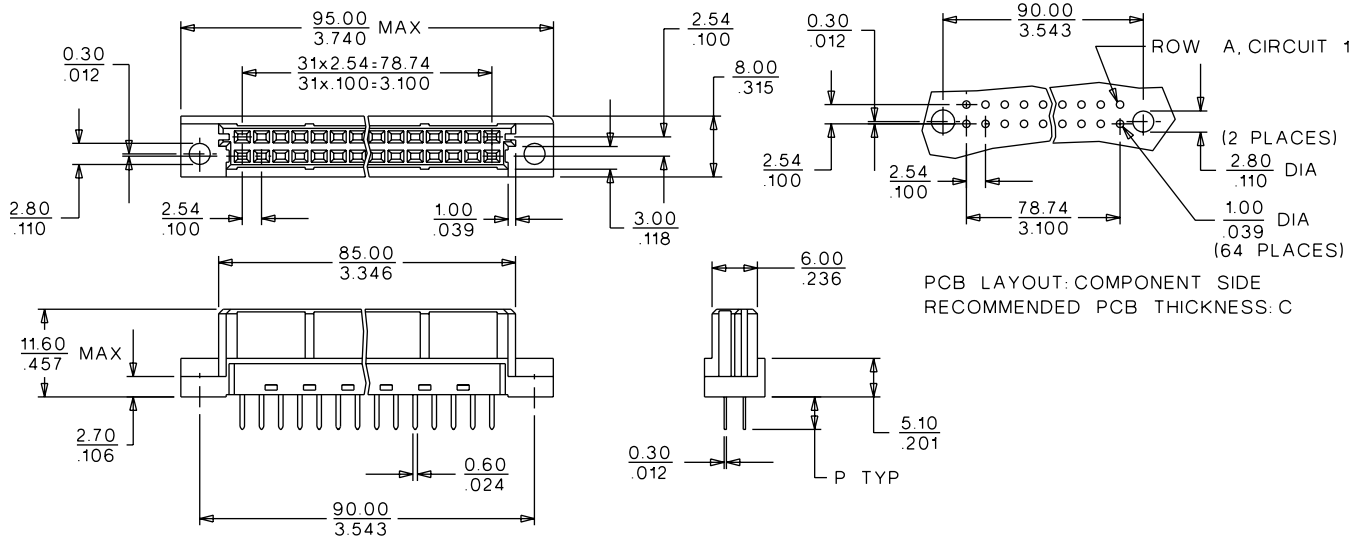
2.54mm (.100") Pitch DIN 41612/IEC 603-2 Connector

85040

Female Style B



CATALOG DRAWING (FOR REFERENCE ONLY)



ORDERING INFORMATION AND DIMENSIONS

Circuits	Order No.		Contact Loading	Rows	Solder Tail Dimension P	Option(s)
	Performance Level*					
	1	2				
32		85040-0696	Even only	a, b	2.9 (.114)	Board locks
		85040-1031				
64		85040-0127	Full	a, b	2.9 (.114)	Board locks
		85040-0414				
	85040-0206	85040-0050			4.5 (.177)	Flux proof
		85040-0062				

For other versions contact Molex

* Performance levels based on test conditions per DIN 41612, part 5:

1: >500 mating cycles. 10 day industrial environment (S02)

2: >400 mating cycles. 4 day industrial environment (S02)

Backplane Connector Systems

