

FEATURES AND SPECIFICATIONS

Features and Benefits

- Per DIN 41626
- Cable and PCB termination
- 10 to 40A current capacity
- Crimp and solder cable terminations
- Contacts snap into connector housing

Reference Information

Product Specification: DIN 41626

Packaging: Bag

Tooling: Contact removal tool 85089-0323

Use With Series 85022:

[85048](#)—Straight female style M

[85056](#)—Right angle female style M “inverse”

Use With Series 85023:

[85009](#)—Right angle male style M

[85017](#)—Straight male style M “inverse”

Electrical

Current: See Table

Physical

Pin Contact: Brass

Socket Contact: Bronze and Beryllium Copper

Clip: Beryllium Copper

Plating: Gold

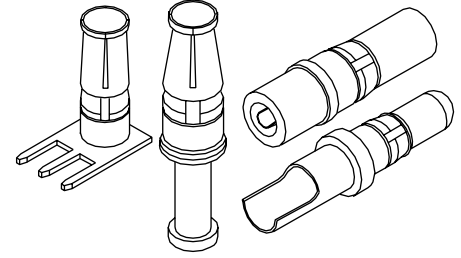
Operating Temperature: -55 to +125°C



2.54mm (.100") Pitch DIN 41612/IEC 603-2 High Current High Voltage Contacts

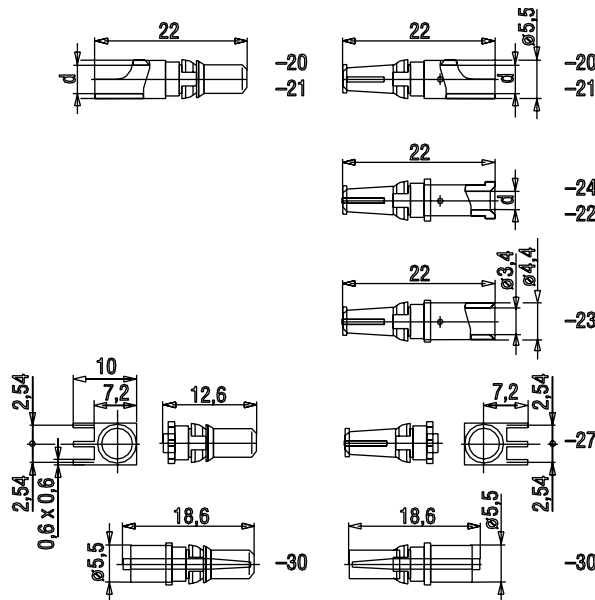
85022/85023

Special Contacts for Style M and M Inverse Mixed Layout Connector



Backplane Connector Systems

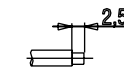
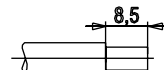
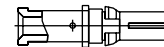
CATALOG DRAWING (FOR REFERENCE ONLY)



Assembly Instructions:

High current contacts

High voltage contacts



Solder: L = 8,0

Crimp: L = 9,5

ORDERING INFORMATION

HIGH CURRENT CONTACTS						
Style	Order No.		Code	Type	Contact	Termination
	Performance Level*					
	1	2				
Straight	85023-0440	85023-0373	21	Cable solder	Male	30A 6mm ² /10AWG
	85023-0438	85023-0361	20			40A 10mm ² /8AWG
	85022-0543	85022-0438	21		Female	30A 6mm ² /10AWG
	85022-0531	85022-0426	20			40A 10mm ² /8AWG
	85022-0567	85022-0452	24	Cable crimp	Female	10A 2mm ² /14AWG
	85022-0555	85022-0440	22			20A 2.5mm ² /12AWG
	85022-0581	85022-0579	23		30A 6mm ² /10AWG	
		85023-0488	09		PC board	Male

HIGH CURRENT CONTACTS							
Style	Order No.		Code	Type	Contact	Termination	
	Performance Level*						
	1	2					
Right angle	85023-0256		27	PC board solder	Male	30A 3-pin solder	
	85023-0232				Male-FMLB	40A 4-pin solder	
	85023-0490		44		Male	40A 4-pin solder	
	85023-0505				Male-FMLB	40A 4-pin solder	
	85022-0062		27		Female	30A	3-pin solder
	85022-0646					40A	4-pin solder
Straight		85023-0323	30	Cable solder	Male	Wire 0.75mm ²	
		85022-0361			Female	3.8kV	

For other versions contact Molex

* Performance levels based on test conditions per DIN 41612, part 5:

1: >500 mating cycles. 10 day industrial environment (S02)

2: >400 mating cycles. 4 day industrial environment (S02)