

FEATURES AND SPECIFICATIONS

Features and Benefits

- FMLB/LMFB pins (extended/recessed) available
- Board lock option
- Flux-proof option
- Solder tails for 1.6mm (.062") and 3.2mm (.125") PCBs

Reference Information

Product Specification: PS 85013-0001
 Packaging: Tray
 UL File No.: E29179
 CSA File No.: LR19980-390
 Mates With:

- [85042](#)—Straight female style C
- [85052](#)—Right angle female style R

Electrical

Current: 1.5A

Physical

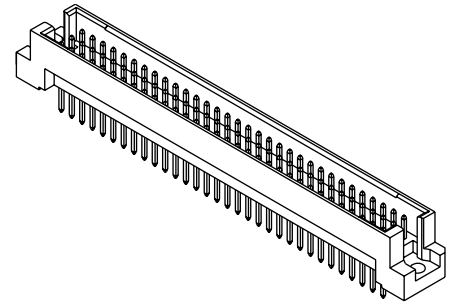
Housing: Glass-filled polyester, UL 94V-0
 Contact: Brass
 Operating Temperature: -55 to +125°C



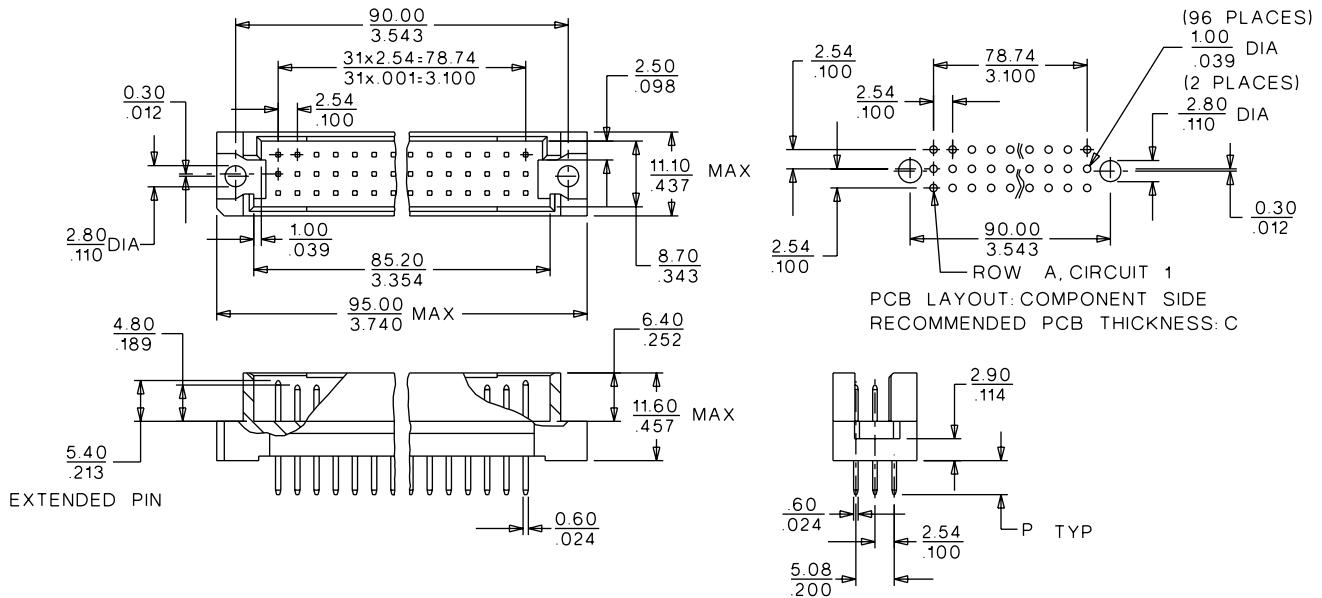
**2.54mm (.100") Pitch
 DIN 41612/IEC 603-2
 Connector**

85013

**Male
 Style R**



CATALOG DRAWING (FOR REFERENCE ONLY)



ORDERING INFORMATION AND DIMENSIONS

Circuits	Order No.		Contact Loading	Rows	Solder Tail Dimension P	Option(s)	
	Performance Level*						
	1	2					
32	85013-3160		Even only	a, c	4.5 (.177)		
	85013-0361				13.3 (.523)		
64	85013-1938		Full	a, c	2.9 (.114)	Board locks	
	85013-2244				4.5 (.177)	FMLB-4 pins: 1, 32 a, c	Board locks
	85013-1641	85013-0012					
	85013-1914						
	85013-2232						
	85013-0402	85013-1677				13.3 (.523)	

Circuits	Order No.		Contact Loading	Rows	Solder Tail Dimension P	Option(s)	
	Performance Level*						
	1	2					
96	85013-2385	85013-0048	Full	a, b, c	2.9 (.114)		
		85013-3122				Board locks	
	85013-0438	85013-0036			4.5 (.177)	FMLB-12 pins: 1-3, 30-32 a, c	Flux-proof
		85013-1108					
		85013-1512					
	85013-0414	85013-0024					13.3 (.523)

For other versions contact Molex

* Performance levels based on test conditions per DIN 41612, part 5:

1: >500 mating cycles. 10 day industrial environment (S02)

2: >400 mating cycles. 4 day industrial environment (S02)