

FEATURES AND SPECIFICATION

Features and Benefits

- Performance levels 1 and 2
- Flux proof option
- FMLB/LMFB pins (extended/recessed) available
- Board lock option
- Solder tails for 1.6mm (.062") PCBs (for 2.4mm (.094") PCBs on request)

Reference Information

Product Specification: PS-85003-0001
 Packaging: Tray
 UL File No.: E29179
 CSA File No.: LR19980-390
 Mates With:

- [85040](#)—Straight female style B
- [85050](#)—Right angle female style Q

Electrical

Current: 1.0A

Physical

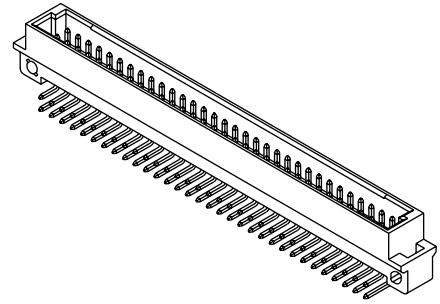
Housing: Glass-filled polyester, UL 94V-0
 Contact: Brass
 Operating Temperature: -55 to +125°C



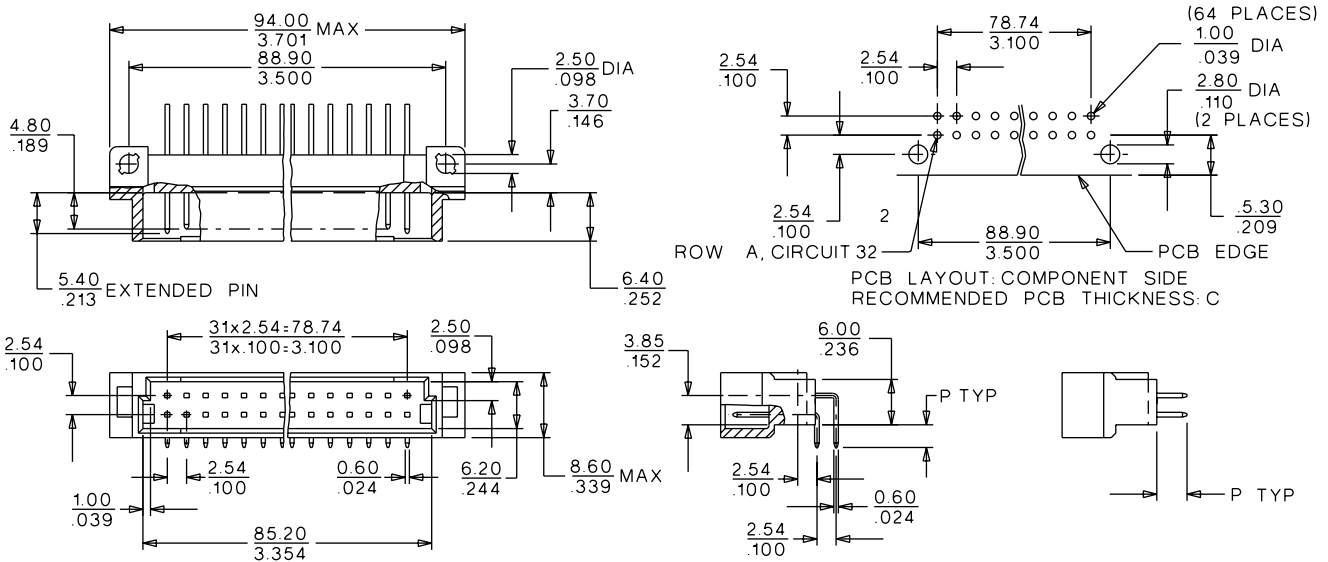
**2.54mm (.100") Pitch
 DIN 41612/IEC 603-2
 Connector**

85001

**Male
 Style B**



CATALOG DRAWING (FOR REFERENCE ONLY)



ORDERING INFORMATION AND DIMENSIONS

Circuits	Order No.		Contact Loading	Rows	Solder Tail Dimension P	Option(s)
	Performance Level*					
	1	2				
32		85001-0050	Even only	a, b	3.0 (.118)	Board locks
		85001-0397				
64	85001-0256	85001-0036	Full	a, b	3.0 (.118)	Board locks FMLB-8 pins: 1, 2, 31, 32
		85001-0191				
		85001-0385				

For other versions contact Molex

* Performance levels based on test conditions per DIN 41612, part 5:

1: >500 mating cycles. 10 day industrial environment (S02)

2: >400 mating cycles. 4 day industrial environment (S02)