

FEATURES AND SPECIFICATIONS

Features and Benefits

- Sizes 10 to 60 circuits
- Selective Gold- and Tin-plated versions

Reference Information

Packaging: Tray
 UL File No.: E29179-E
 Mates With: [5320-NA](#) and [5320-NB](#)
 Designed In: Millimeters

Electrical

Current: 1.0A
 Contact Resistance: 20mΩ max.
 Dielectric Withstanding Voltage: 500V AC
 Insulation Resistance: 1000 MΩ min.

Physical

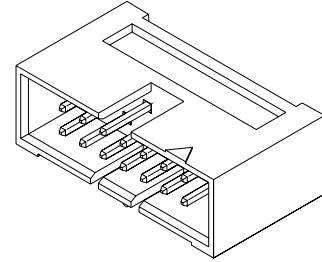
Housing: Black glass-filled polyester, UL 94V-0
 Contact: Brass
 Contact Pin: 0.635mm (.025") square
 Plating: See Table
 Operating Temperature: -40 to +105°C



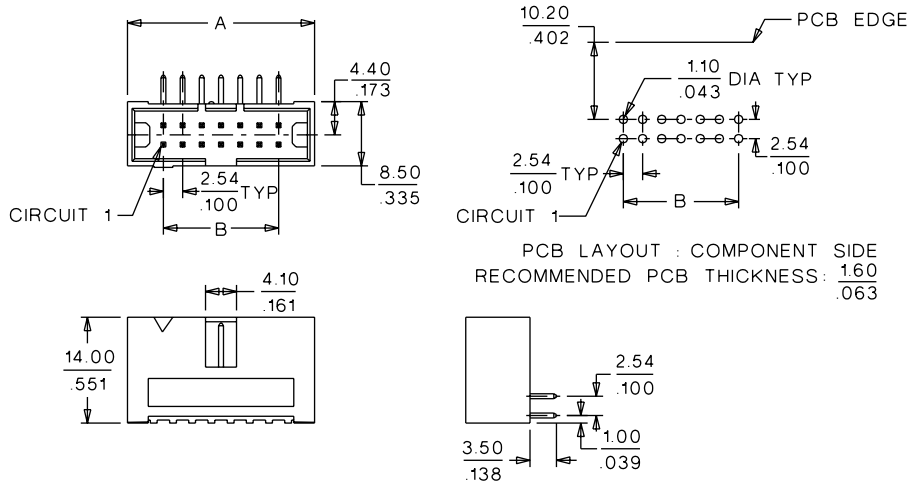
**2.54mm (.100") Pitch
 QF 50™
 Shrouded Header**

5342

Right Angle, Dual Row Single Polarization



CATALOG DRAWING (FOR REFERENCE ONLY)



ORDERING INFORMATION AND DIMENSIONS

| Circuits | Order No. | | Dimension | |
|----------|--------------|-------------|---------------|---------------|
| | Plating NGS1 | Plating NT2 | A | B |
| 10 | 39-26-7108 | 39-28-5104 | 19.66 (.774) | 10.16 (.400) |
| 14 | 39-26-7148 | 39-28-5144 | 24.74 (.974) | 15.24 (.600) |
| 16 | 39-26-7168 | 39-28-5164 | 27.28 (1.074) | 17.78 (.700) |
| 20 | 39-26-7208 | 39-28-5204 | 32.36 (1.274) | 22.86 (.900) |
| 26 | 39-26-7268 | 39-28-5264 | 39.98 (1.574) | 30.48 (1.200) |
| 30 | 39-26-7308 | 39-28-5304 | 45.06 (1.774) | 35.56 (1.400) |
| 34 | 39-26-7348 | 39-28-5344 | 50.14 (1.974) | 40.64 (1.600) |
| 40 | 39-26-7408 | | 57.76 (2.274) | 48.26 (1.900) |
| 50 | 39-26-7508 | | 70.46 (2.774) | 60.96 (2.400) |
| 60 | 39-26-7608 | | 83.16 (3.274) | 73.66 (2.900) |

Plating NGS1: 39μ" (1μm) min. Nickel underplate. Contact area: 4μ" (0.1μm) min. Gold.
 Solder area: 3μm min. Tin/Lead.

Plating NT2: 35μ" (0.9μm) min. Tin overall