

FEATURES AND SPECIFICATIONS

Features and Benefits

- Sizes 3 to 30 circuits
- For 0.30mm thick FFC/FPC
- All solder tails kinked for added PCB retention
- Surface Mount Compatible

Reference Information

Packaging: Tray
Designed In: Millimeters

Electrical

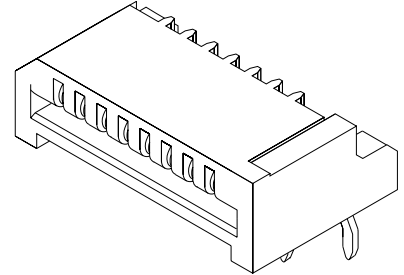
Voltage: 50V
Current: 0.5A
Contact Resistance: 30mΩ max.
Dielectric Withstanding Voltage: 500V AC
Insulation Resistance: 100 MΩ min.

Physical

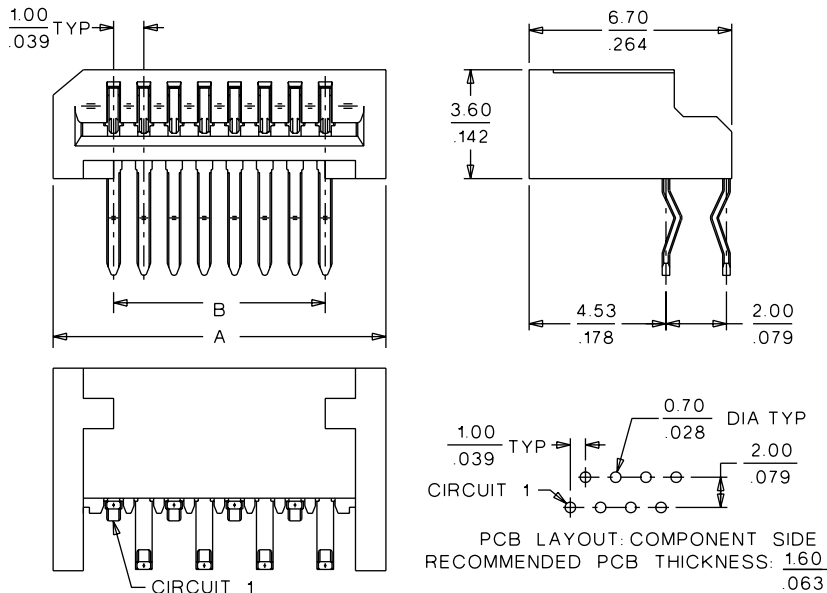
Housing: PPS, UL 94V-0
Contact: Phosphor Bronze
Plating: Tin
Operating Temperature: -20 to +80°C

molex® 1.00mm (.039") Pitch FFC/FPC Connector

**52807
Right Angle, Non-ZIF
Top Contact Style**



CATALOG DRAWING (FOR REFERENCE ONLY)



ORDERING INFORMATION AND DIMENSIONS

Circuits	Order No.	Dimension		Circuits	Order No.	Dimension	
		A	B			A	B
3	52807-0310	6.00 (.236)	2.00 (.079)	17	52807-1710	20.00 (.787)	16.00 (.630)
4	52807-0410	7.00 (.276)	3.00 (.118)	18	52807-1810	21.00 (.827)	17.00 (.669)
5	52807-0510	8.00 (.315)	4.00 (.157)	19	52807-1910	22.00 (.866)	18.00 (.709)
6	52807-0610	9.00 (.354)	5.00 (.197)	20	52807-2010	23.00 (.906)	19.00 (.748)
7	52807-0710	10.00 (.394)	6.00 (.236)	21	52807-2110	24.00 (.945)	20.00 (.787)
8	52807-0810	11.00 (.433)	7.00 (.276)	22	52807-2210	25.00 (.984)	21.00 (.827)
9	52807-0910	12.00 (.472)	8.00 (.315)	23	52807-2310	26.00 (1.024)	22.00 (.866)
10	52807-1010	13.00 (.512)	9.00 (.354)	24	52807-2410	27.00 (1.063)	23.00 (.906)
11	52807-1110	14.00 (.551)	10.00 (.394)	25	52807-2510	28.00 (1.102)	24.00 (.945)
12	52807-1210	15.00 (.591)	11.00 (.433)	26	52807-2610	29.00 (1.142)	25.00 (.984)
13	52807-1310	16.00 (.630)	12.00 (.472)	27	52807-2710	30.00 (1.181)	26.00 (1.024)
14	52807-1410	17.00 (.669)	13.00 (.512)	28	52807-2810	31.00 (1.220)	27.00 (1.063)
15	52807-1510	18.00 (.709)	14.00 (.551)	29	52807-2910	32.00 (1.260)	28.00 (1.102)
16	52807-1610	19.00 (.748)	15.00 (.591)	30	52807-3010	33.00 (1.299)	29.00 (1.142)

Note: For cable specification dimensions, see cable pages at end of section