

FEATURES AND SPECIFICATIONS

Features and Benefits

- Unique spring-beam design provides high pressure and small deflection for high vibration applications

Reference Information

Packaging: Chain or loose
 Use With: [52117](#)
 Designed In: Millimeters

Electrical

Voltage: 250V
 Current: 3.0A

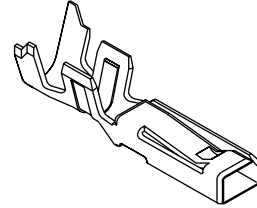
Physical

Contact: Phosphor Bronze
 Plating: Tin
 Wire Range: AVS 0.30 sq., CAVS 0.50 sq. (20 to 22 AWG)
 Insulation Range: 1.50 to 1.90mm
 Strip Length: 2.00 to 2.50mm

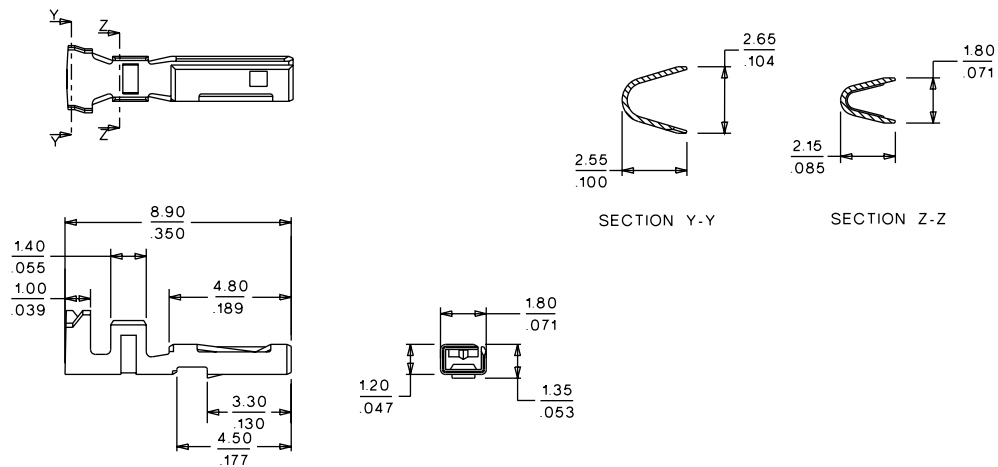


2.50mm (.098") Pitch Splash Proof Wire-to-Wire Crimp Terminal

50039



CATALOG DRAWING (FOR REFERENCE ONLY)



ORDERING INFORMATION

Order No.	Packaging
50039-8000	Chain
50039-8100	Loose