

## FEATURES AND SPECIFICATIONS

### Features and Benefits

- Seal is in housing to simplify crimping process
- Raised body design provides polarization

### Reference Information

Packaging: Chain or loose  
 Use With: [52116](#)  
 Designed In: Millimeters

### Electrical

Voltage: 250V  
 Current: 3.0A

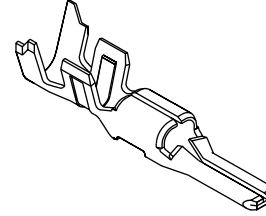
### Physical

Contact: Phosphor Bronze  
 Plating: Tin  
 Wire Range: AVS 0.30 sq., CAVS 0.50 sq. (20 to 22 AWG)  
 Insulation Range: 1.50 to 1.90mm  
 Strip Length: 2.00 to 2.50mm

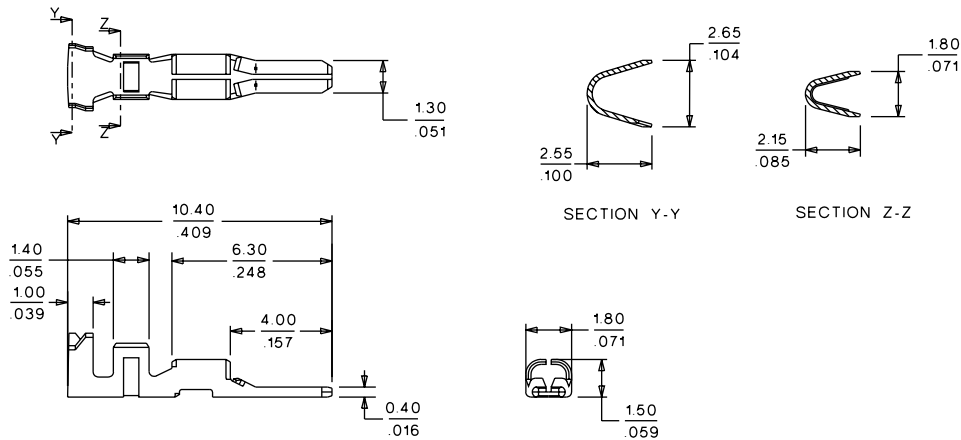


# 2.50mm (.098") Pitch Splash Proof Wire-to-Wire Crimp Terminal

**50038**



## CATALOG DRAWING (FOR REFERENCE ONLY)



## ORDERING INFORMATION

Order No.	Packaging
50038-8000	Chain
50038-8100	Loose