

FEATURES AND SPECIFICATIONS

Features and Benefits

- Surface Mount Compatible
- Fully isolated terminals to protect contacts from damage
- A variety of board thicknesses available
- Patented metal retention clip holds product before and after the soldering process
- Blind-mating capabilities

Reference Information

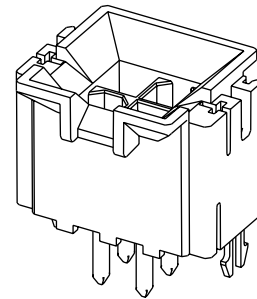
Product Specification: PS-43810-0001
 Packaging: Tray
 Mates With: [42385](#), [42474](#), [44475](#) and [5557](#) dual row receptacles
 Designed In: Millimeters



**Mini-Fit, SMC™
 Surface Mount
 Compatible Headers**

44068

**Vertical, Dual Row
 For 3.18mm (.125") max.
 PCB Thickness**



Electrical

Voltage: 600V
 Current: 9.0A (12.0A with HCS terminals)

| Circuits | 2-3 | 4-6 | 7-10 | 12-24 |
|----------------------|-----|-----|------|-------|
| Amperes-BMI | 9 | 8 | 7 | 6 |
| Amperes-BMI with HCS | 12 | 11 | 10 | 9 |

Contact Resistance: 10mΩ max.
 Dielectric Withstanding Voltage: 1500V
 Insulation Resistance: 1000 MΩ min.

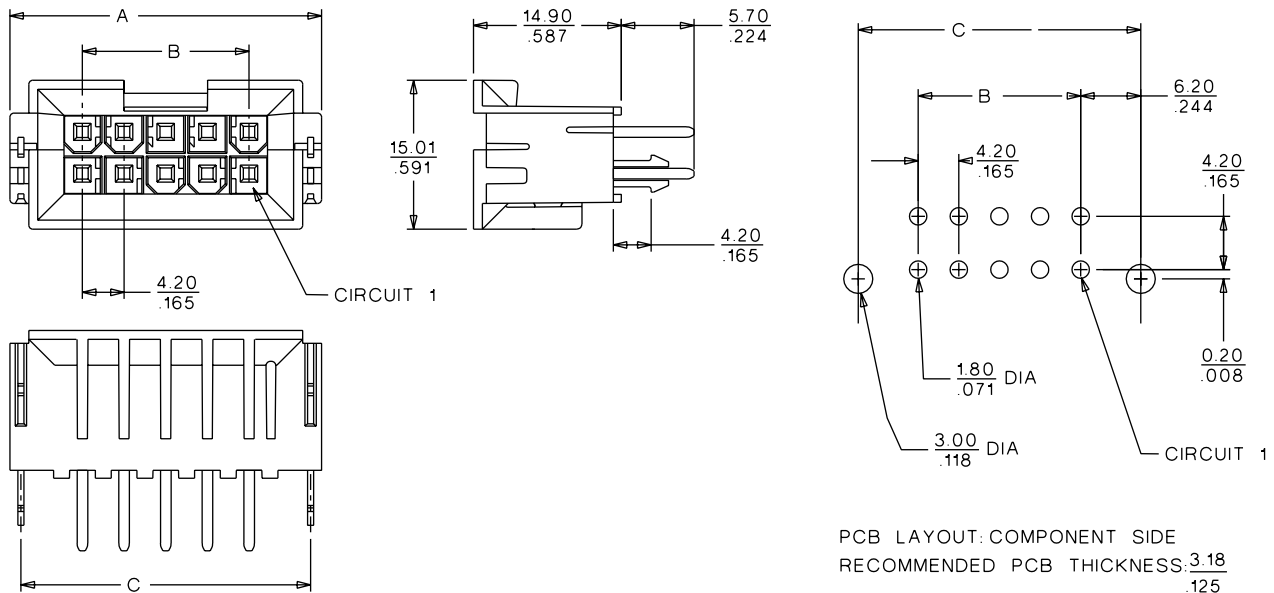
Mechanical

Insertion Force to PCB: 5.0kg max.
 Mating Force: 0.7kg (1.54 lb) per circuit max.
 Unmating Force: 0.35kg (0.7 lb) per circuit min.
 Normal Force: 200g min.
 Durability: 30 cycles

Physical

Housing: 4/6 nylon, UL 94V-0
 Contact: Brass
 Plating: Tin, overall Gold
 Operating Temperature: -40 to +105°C

CATALOG DRAWING (FOR REFERENCE ONLY)



ORDERING INFORMATION AND DIMENSIONS

| Circuits | Order No. | | | | Dimension | | |
|----------|--------------|--------------|--------------|--------------|---------------|---------------|---------------|
| | Tin Plated | | Gold Plated | | A | B | C |
| | With Clip | Without Clip | With Clip | Without Clip | | | |
| 4 | • 44068-0089 | • 44068-0023 | • 44068-0100 | • 44068-0034 | 18.81 (.740) | 4.20 (.165) | 16.60 (.653) |
| 6 | • 44068-0090 | • 44068-0024 | • 44068-0101 | • 44068-0035 | 23.01 (.906) | 8.40 (.331) | 20.80 (.819) |
| 10 | • 44068-0092 | • 44068-0026 | • 44068-0103 | • 44068-0037 | 31.41 (1.237) | 16.80 (.661) | 29.20 (1.150) |
| 14 | • 44068-0094 | • 44068-0028 | • 44068-0105 | • 44068-0039 | 39.81 (1.567) | 25.20 (.992) | 37.60 (1.480) |
| 18 | • 44068-0096 | • 44068-0030 | • 44068-0107 | • 44068-0041 | 48.21 (1.898) | 33.60 (1.323) | 46.00 (1.810) |
| 24 | • 44068-0099 | • 44068-0033 | • 44068-0110 | • 44068-0044 | 60.81 (2.394) | 46.20 (1.819) | 58.60 (2.307) |

• US Standard Product, available through Molex franchised distributors