

FEATURES AND SPECIFICATIONS

Features and Benefits

- Board-mounted receptacle header for board-to-board applications
- Fully isolated terminals to protect contacts from damage

Reference Information

Product Specification: PS-5556-0002

Packaging: Tray and bag

UL File No.: E29179

CSA File No.: LR19980

TUV License No.: R75142

Use With: Standard Mini-Fit terminals

Mates With: [42475](#) plug, [42404](#), [42440](#), [43810](#), [43879](#) and [44068](#) headers

Designed In: Millimeters

Electrical

Voltage: 600V

Current: (Used with 16 AWG)

Circuits	2-3	4-6	7-10	12-24
Amperes-BMI	9	8	7	6

Contact Resistance: 10mΩ max.

Dielectric Withstanding Voltage: 1500V

Insulation Resistance: 1000 MΩ min.

Mechanical

Insertion Force: 5.0kg max.

Mating Force: 0.7kg (1.54 lb) max.

Unmating Force: 0.35kg (0.7 lb) min.

Normal Force: 200g min.

Durability: 30 cycles

Physical

Housing: 6/6 nylon, UL 94V-2 or 94V-0

Contact: Brass or Phosphor Bronze

Plating: Post-plated Tin over Nickel or Gold

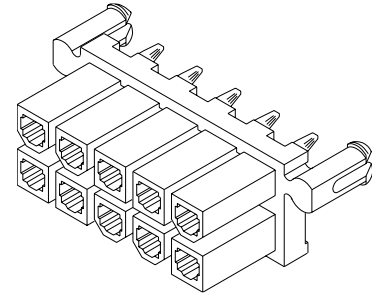
Operating Temperature: -40 to +105°C



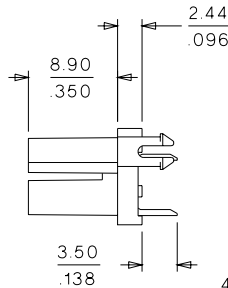
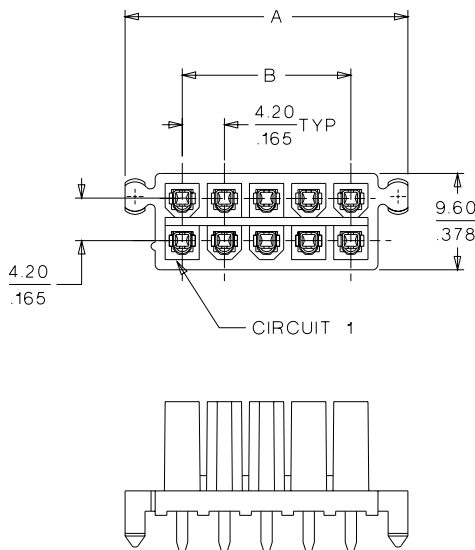
4.20mm (.165") Pitch Mini-Fit, BMI™ Receptacle Header

42385

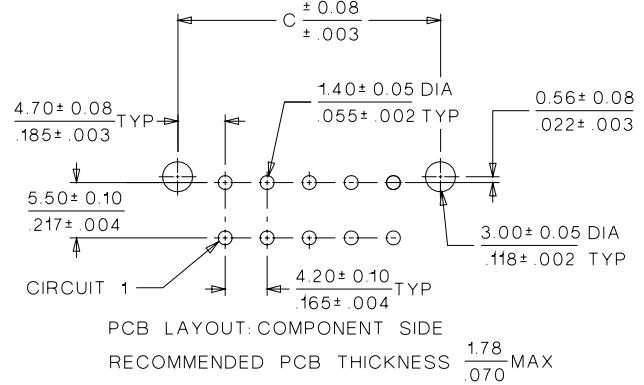
Vertical Dual Row



CATALOG DRAWING (FOR REFERENCE ONLY)



Polarizing Key	Order No.
	15-04-0211



ORDERING INFORMATION AND DIMENSIONS

Circuits	Order No.				Dimension		
	Tin Plated		Gold Plated		A	B	C
	94V-2	94V-0	94V-2	94V-0			
4	• 15-24-7040	• 15-24-7041	• 15-24-7042	• 15-24-7043	15.62 (.615)	4.20 (.165)	13.60 (.535)
6	• 15-24-7060	• 15-24-7061	• 15-24-7062	• 15-24-7063	19.82 (.780)	8.40 (.331)	17.80 (.701)
10	• 15-24-7100	• 15-24-7101	• 15-24-7102	• 15-24-7103	28.22 (1.111)	16.80 (.661)	26.20 (1.031)
14	• 15-24-7140	• 15-24-7141	• 15-24-7142	• 15-24-7143	36.62 (1.442)	25.20 (.992)	34.60 (1.362)
16	• 15-24-7160	• 15-24-7161	• 15-24-7162	• 15-24-7163	40.80 (1.607)	29.40 (1.157)	38.80 (1.528)
18	• 15-24-7180	• 15-24-7181	• 15-24-7182	• 15-24-7183	45.02 (1.772)	33.60 (1.323)	43.00 (1.693)
24	• 15-24-7240	• 15-24-7241	• 15-24-7242	• 15-24-7243	57.62 (2.269)	46.20 (1.819)	55.60 (2.189)

• US Standard Product, available through Molex franchised distributors

Note: 42385 headers do not mate with Mini-Fit, Jr.™ products