

## FEATURES AND SPECIFICATIONS

### Features and Benefits

- Sizes 2 to 16 circuits
- Latch windows retain positive locks after mating
- Standoffs minimize flux retention
- Coined version for positive pin retention to header

### Reference Information

Product Specification: PS-89369  
 Packaging: Bag  
 UL File No.: E29179  
 CSA File No.: LR19980A  
 Mates With: [87369](#)  
 Designed In: Millimeters

### Electrical

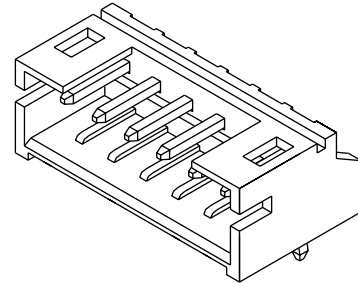
Voltage: 250V  
 Current: 4.0A  
 Contact Resistance: 40mΩ max.  
 Dielectric Withstanding Voltage: 500V AC/1 min.  
 Insulation Resistance: 1000 MΩ min.

### Physical

Housing: Natural 6/6 nylon, UL 94V-0  
 Contact: Brass  
 Plating: Tin  
 Operating Temperature: -25 to +85°C

# molex® 2.00mm (.079") Pitch Wire-to-Board Header

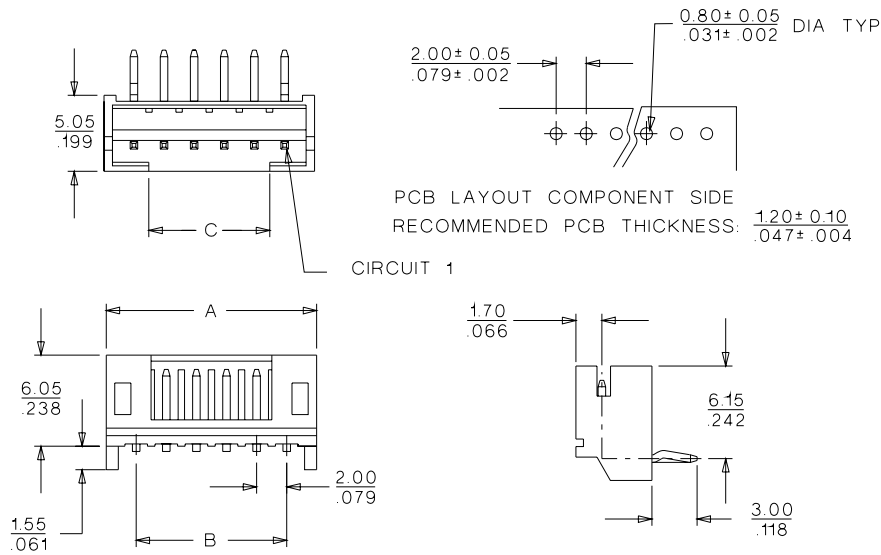
## 89401 Right Angle



**B**

2.00 to 2.50mm (.079 to .098") Pitch

## CATALOG DRAWING (FOR REFERENCE ONLY)



## ORDERING INFORMATION AND DIMENSIONS

Circuits	Order No. Coined Version	Dimension		
		A	B	C
2	89401-021X	6.00 (.236)	2.00 (.079)	0.75 (.029)
3	89401-031X	8.00 (.314)	4.00 (.157)	2.00 (.079)
4	89401-041X	10.00 (.393)	6.00 (.236)	4.00 (.157)
5	89401-051X	12.00 (.472)	8.00 (.314)	6.00 (.236)
6	89401-061X	14.00 (.551)	10.00 (.393)	8.00 (.314)
7	89401-071X	16.00 (.629)	12.00 (.472)	10.00 (.393)
8	89401-081X	18.00 (.708)	14.00 (.551)	12.00 (.472)
9	89401-091X	20.00 (.787)	16.00 (.629)	14.00 (.551)
10	89401-101X	22.00 (.866)	18.00 (.708)	16.00 (.629)
11	89401-111X	24.00 (.944)	20.00 (.787)	18.00 (.708)
12	89401-121X	26.00 (1.023)	22.00 (.866)	20.00 (.787)
13	89401-131X	28.00 (1.102)	24.00 (.944)	22.00 (.866)
14	89401-141X	30.00 (1.181)	26.00 (1.023)	24.00 (.944)
15	89401-151X	32.00 (1.259)	28.00 (1.102)	26.00 (1.023)
16	89401-161X	34.00 (1.339)	30.00 (1.181)	28.00 (1.102)

Replace X with color option (0 to 7)	
0	Natural
2	Red
3	Yellow
4	Blue
6	Green
7	Black