

## FEATURES AND SPECIFICATIONS

### Features and Benefits

- Sizes 4 to 50 circuits
- IR, vapor-phase and wave solder Surface Mount Compatible
- Dual beam contact design ensures reliable electrical performance
- Molded-in void locations offered for polarization to mating connector
- PC tails have tapered lead-in on for ease of insertion into the PC board
- Also available with shortened 1.91mm (.075") tail length for 0.79mm (.031") thick PC boards

### Reference Information

Product Specification: PS-79107

Packaging: Tube

UL File No.: E29179

CSA File No.: LR19980

Mates With: 0.50mm square pin headers [87049](#), [87089](#) and [87267](#)

Designed In: Millimeters

### Electrical

Voltage: 125V

Current: 1.0A

Contact Resistance: 25mΩ max.

Dielectric Withstanding Voltage: 1250V

Insulation Resistance: 1000 MΩ min.

### Mechanical

Mating Force: 8 oz max.

Unmating Force: 1.5 oz min.

Normal Force: 100g

Durability: 15μ" Gold contacts—50 cycles min.

30μ" Gold contacts—100 cycles min.

### Physical

Housing: Black glass-filled LCP, UL 94V-0

Contact: Phosphor Bronze

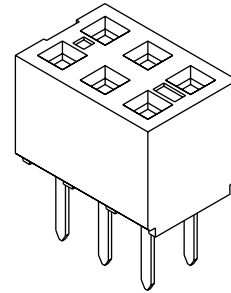
Plating: See Table

Operating Temperature: -55 to +105°C

# molex® 2.00mm (.079") Pitch Milli-Grid™ Board-to-Board Receptacle

## 79107

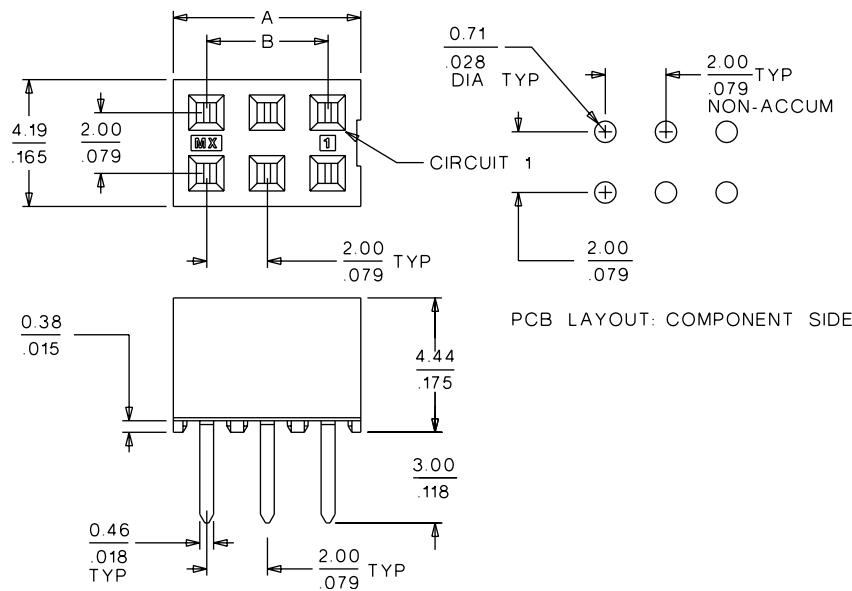
## Vertical, Dual Row Through Hole



**B**

2.00 to 2.50mm (.079 to .098") Pitch

## CATALOG DRAWING (FOR REFERENCE ONLY)



## ORDERING INFORMATION AND DIMENSIONS

Circuits	Order No.		Dimension	
	Plating No. 1	Plating No. 2	A	B
4	• 79107-0001	• 79107-0051	4.19 (.165)	2.00 (.079)
6	• 79107-0002	• 79107-0052	6.19 (.244)	4.00 (.157)
8	• 79107-0003	• 79107-0053	8.19 (.322)	6.00 (.236)
10	• 79107-0004	• 79107-0054	10.19 (.401)	8.00 (.315)
12	• 79107-0005	• 79107-0055	12.19 (.480)	10.00 (.394)
14	• 79107-0006	• 79107-0056	14.19 (.559)	12.00 (.472)
16	• 79107-0007	• 79107-0057	16.19 (.637)	14.00 (.551)
18	• 79107-0008	• 79107-0058	18.19 (.716)	16.00 (.630)
20	• 79107-0009	• 79107-0059	20.19 (.795)	18.00 (.709)
22	• 79107-0010	• 79107-0060	22.19 (.874)	20.00 (.787)
24	• 79107-0011	• 79107-0061	24.19 (.952)	22.00 (.866)
26	• 79107-0012	• 79107-0062	26.19 (1.031)	24.00 (.945)

Circuits	Order No.		Dimension	
	Plating No. 1	Plating No. 2	A	B
28	• 79107-0013	• 79107-0063	28.19 (1.110)	26.00 (1.024)
30	• 79107-0014	• 79107-0064	30.19 (1.188)	28.00 (1.102)
32	• 79107-0015	• 79107-0065	32.19 (1.267)	30.00 (1.181)
34	• 79107-0016	• 79107-0066	34.19 (1.346)	32.00 (1.260)
36	• 79107-0017	• 79107-0067	36.19 (1.425)	34.00 (1.338)
38	• 79107-0018	• 79107-0068	38.19 (1.504)	36.00 (1.417)
40	• 79107-0019	• 79107-0069	40.19 (1.582)	38.00 (1.496)
42	• 79107-0020	• 79107-0070	42.19 (1.661)	40.00 (1.575)
44	• 79107-0021	• 79107-0071	44.19 (1.740)	42.00 (1.654)
46	• 79107-0022	• 79107-0072	46.19 (1.818)	44.00 (1.732)
48	• 79107-0023	• 79107-0073	48.19 (1.897)	46.00 (1.811)
50	• 79107-0024	• 79107-0074	50.19 (1.976)	48.00 (1.890)

• US Standard Product, available through Molex franchised distributors

Plating No. 1: 15μ" min. Gold plate in selected area and 75μ" min. Tin/Lead in selected area, over Nickel overall

Plating No. 2: 30μ" min. Gold plate in selected area and 75μ" min. Tin/Lead in selected area, over Nickel overall