

FEATURES AND SPECIFICATIONS

Features and Benefits

- Sizes 2 to 15 circuits
- Locking windows provide secure mating

Reference Information

Packaging: Tray
 UL File No.: E29179
 CSA File No.: LR19980
 Mates With: [51065](#)
 Designed In: Millimeters

Electrical

Voltage: 125V
 Current:

AWG	24	26	28	30
Amperes	2.0	1.5	1.0	0.5

Contact Resistance: 20mΩ max.
 Dielectric Withstanding Voltage: 500V AC/1 min.
 Insulation Resistance: 1000 MΩ min.

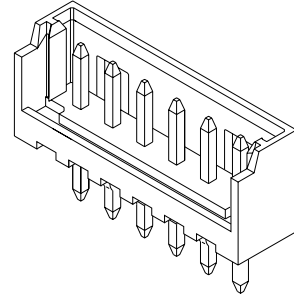
Physical

Housing: 6/6 nylon, UL 94V-0
 Contact: Brass
 Plating: Tin
 Operating Temperature: -20 to +85°C

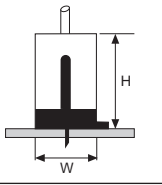
molex® 2.00mm (.079") Pitch Wire-to-Board Header

53253

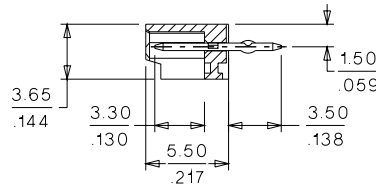
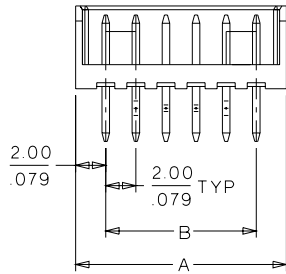
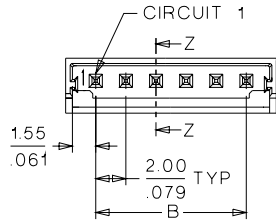
Vertical



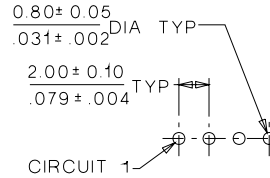
Mating Dimensions
 53253 • 51065 • 50212
 H=7.3mm W=4.0mm



CATALOG DRAWING (FOR REFERENCE ONLY)



SECTION Z-Z



PCB LAYOUT: COMPONENT SIDE
 RECOMMENDED PCB THICKNESS: 1.60 ± 0.10 / .063 ± .004

ORDERING INFORMATION AND DIMENSIONS

Circuits	Order No.	Dimension	
		A	B
2	53253-0210	6.00 (.236)	2.00 (.079)
3	53253-0310	8.00 (.315)	4.00 (.157)
4	53253-0410	10.00 (.394)	6.00 (.236)
5	53253-0510	12.00 (.472)	8.00 (.315)
6	53253-0610	14.00 (.551)	10.00 (.394)
7	53253-0710	16.00 (.630)	12.00 (.472)
8	53253-0810	18.00 (.709)	14.00 (.551)
9	53253-0910	20.00 (.787)	16.00 (.630)
10	53253-1010	22.00 (.866)	18.00 (.709)
11	53253-1110	24.00 (.945)	20.00 (.787)
12	53253-1210	26.00 (1.024)	22.00 (.866)
13	53253-1310	28.00 (1.102)	24.00 (.945)
14	53253-1410	30.00 (1.181)	26.00 (1.024)
15	53253-1510	32.00 (1.260)	28.00 (1.102)

Circuits	Kink Position							
	1	2	3	4	5	N-2	N-1	N
3	x	x	x					
4	x	x	x	x				
5	x	x		x	x			
more than 6		x	x			x	x	

B

2.00 to 2.50mm (.079 to .098") Pitch