

## FEATURES AND SPECIFICATIONS

### Features and Benefits

- Sizes 2 to 36 circuits
- Available with kinked pins for better PC board retention
- Available with end backwalls removed for left to right polarization
- Various pin lengths available
- Voided circuits available (contact Molex)

### Reference Information

Product Specification: PS-10-07  
 Packaging: Bag  
 Tooling Information: See cutting tool section  
 UL File No.: E29179  
 CSA File No.: LR19980  
 Mates With: 2695, 4455, 6471, 7720 and 7880  
 Designed In: Inches

### Electrical

Voltage: 250V  
 Current: 4.0A  
 Contact Resistance: 20mΩ max.  
 Dielectric Withstanding Voltage: 1500V  
 Insulation Resistance: 50K MΩ min.

### Mechanical

Durability:  
 Tin—25 cycles max.  
 Gold—100 cycles max.

### Physical

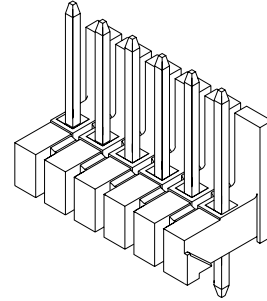
Housing: Glass-filled nylon, UL 94V-0  
 Contact: Phosphor Bronze, 0.64mm (.025") square  
 Plating: See Table  
 Operating Temperature: 0 to +75°C

**molex® 2.54mm (.100") Pitch  
 KK®**

**Breakaway Header**

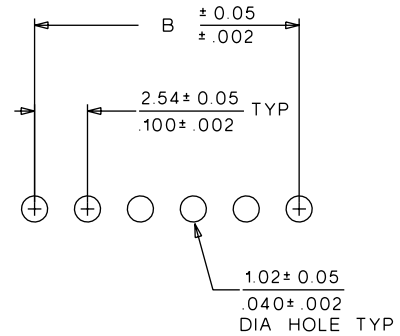
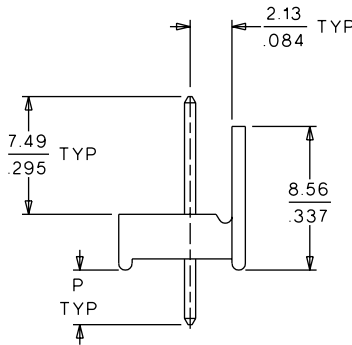
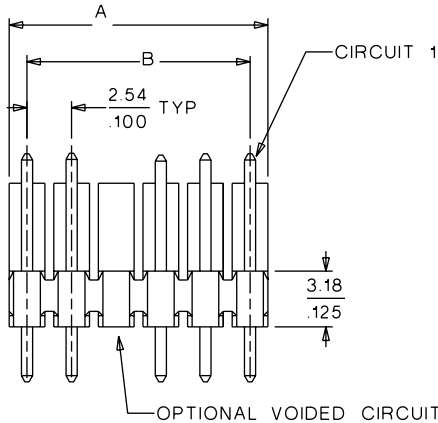
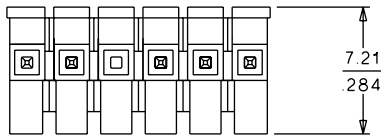
**42225**

**Vertical  
 Polarizing**



2.54mm (.100") Pitch

## CATALOG DRAWING (FOR REFERENCE ONLY)



PCB LAYOUT: COMPONENT SIDE  $\frac{1.57 \pm 0.18}{.062 \pm .007}$   
 RECOMMENDED PCB THICKNESS

## ORDERING INFORMATION AND DIMENSIONS

Standard			With Kinked Tails			With Backwalls Removed		
Tin	15μ" Select Gold	30μ" Select Gold	Tin	15μ" Select Gold	30μ" Select Gold	Tin	15μ" Select Gold	30μ" Select Gold
• 22-28-3XX0	• 22-28-3XX1	• 22-28-3XX2	22-28-3XX3	22-28-3XX4	22-28-3XX5	22-28-3XX6*	22-28-3XX7*	22-28-3XX8*

Replace XX with no. of circuits, 02-36

Circuits	Dimension		
	A	B	P
2	5.08 (.200)	2.54 (.100)	3.05 (.120)
3	7.62 (.300)	5.08 (.200)	3.05 (.120)
4	10.16 (.400)	7.62 (.300)	3.05 (.120)
5	12.70 (.500)	10.16 (.400)	3.05 (.120)
6	15.24 (.600)	12.70 (.500)	3.05 (.120)
7	17.78 (.700)	15.24 (.600)	3.05 (.120)
8	20.32 (.800)	17.78 (.700)	3.05 (.120)
9	22.86 (.900)	20.32 (.800)	3.05 (.120)
10	25.40 (1.000)	22.86 (.900)	3.05 (.120)
11	27.94 (1.100)	25.40 (1.000)	3.05 (.120)
12	30.48 (1.200)	27.94 (1.100)	3.05 (.120)
13	33.02 (1.300)	30.48 (1.200)	3.05 (.120)

Circuits	Dimension		
	A	B	P
14	35.56 (1.400)	33.02 (1.300)	3.43 (.135)
15	38.10 (1.500)	35.56 (1.400)	3.43 (.135)
16	40.64 (1.600)	38.10 (1.500)	3.43 (.135)
17	43.18 (1.700)	40.64 (1.600)	3.43 (.135)
18	45.72 (1.800)	43.18 (1.700)	3.43 (.135)
19	48.26 (1.900)	45.72 (1.800)	3.43 (.135)
20	50.80 (2.000)	48.26 (1.900)	3.43 (.135)
21	53.34 (2.100)	50.80 (2.000)	3.43 (.135)
22	55.88 (2.200)	53.34 (2.100)	3.43 (.135)
23	58.42 (2.300)	55.88 (2.200)	3.43 (.135)
24	60.96 (2.400)	58.42 (2.300)	3.43 (.135)
25	63.50 (2.500)	60.96 (2.400)	3.43 (.135)

Circuits	Dimension		
	A	B	P
26	66.04 (2.600)	63.50 (2.500)	3.05 (.120)
27	68.58 (2.700)	66.04 (2.600)	3.05 (.120)
28	71.12 (2.800)	68.58 (2.700)	3.05 (.120)
29	73.66 (2.900)	71.12 (2.800)	3.05 (.120)
30	76.20 (3.000)	73.66 (2.900)	3.05 (.120)
31	78.74 (3.100)	76.20 (3.000)	3.05 (.120)
32	81.28 (3.200)	78.74 (3.100)	3.05 (.120)
33	83.82 (3.300)	81.28 (3.200)	3.05 (.120)
34	86.36 (3.400)	83.82 (3.300)	3.05 (.120)
35	88.90 (3.500)	86.36 (3.400)	3.05 (.120)
36	91.44 (3.600)	88.90 (3.500)	3.05 (.120)

\* US Standard Product, available through Molex franchised distributors (36 circuit only)

\* Available in 3 to 36 circuits only

Circuit 1 designation is used to orient the header to locate the voided circuit. Review mating connector to assure correct mating orientation.