

## FEATURES AND SPECIFICATIONS

### Features and Benefits

- Sizes 2 to 24 circuits available
- Optional voided circuits available
- Various pin lengths available (contact Molex)
- May be purchased in full 24 circuit sticks and broken into required circuit sizes
- 41661 has square pins and 41701 has round pins

### Reference Information

Product Specification: PS-41186/08-50

Packaging: Bag

Tooling Information: See cutting tool section

UL File No.: E29179

CSA File No.: LR19980

TUV File No.: R75108

Mates With: 2139, 2145, 6442, 7674, 7675, 41695 and 41815

Designed In: Inches

### Electrical

Voltage: 250V AC max.

Current: 7.0A max.\*

Contact Resistance: 6mΩ max.

Dielectric Withstanding Voltage: 1500V

Insulation Resistance: 50K MΩ min.

### Mechanical

Durability:

Tin—25 cycles max.

Gold—100 cycles max.

### Physical

Housing: Black glass-filled polyester, UL 94V-0

Contact: Brass, 1.14mm (.045") pins

Plating: See Table

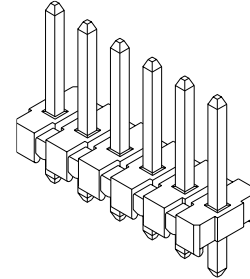
Operating Temperature: 0 to +75°C

**molex® 3.96mm (.156") Pitch**  
**KK®**

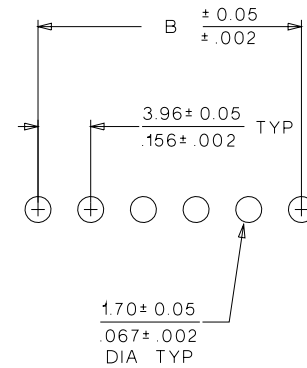
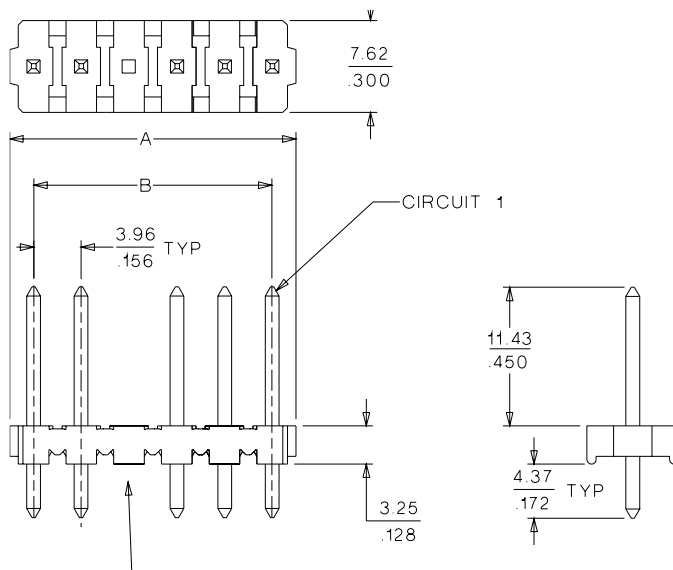
**Breakaway Header**

**41661/41701**

**Vertical**



## CATALOG DRAWING (FOR REFERENCE ONLY)



PCB LAYOUT: COMPONENT SIDE  
RECOMMENDED PCB THICKNESS  $1.57 \pm 0.18$   
 $.062 \pm .007$

Note: 41661 shown

## ORDERING INFORMATION AND DIMENSIONS

Circuits	Order No.					Dimension	
	Square Pin			Round Pin		A	B
	Tin	15μ" Select Gold	30μ" Select Gold	Tin	Overall Gold		
2	26-48-1021	41661-0001	41661-0024	26-51-0021	26-51-2020	6.78 (.267)	3.96 (.156)
3	26-48-1031	41661-0002	41661-0025	26-51-0031	26-51-2030	10.74 (.423)	7.92 (.312)
4	26-48-1041	41661-0003	41661-0026	26-51-0041	26-51-2040	14.71 (.579)	11.89 (.468)
5	26-48-1051	41661-0004	41661-0027	26-51-0051	26-51-2050	18.67 (.735)	15.85 (.624)
6	26-48-1061	41661-0005	41661-0028	26-51-0061	26-51-2060	22.63 (.891)	19.81 (.780)
7	26-48-1071	41661-0006	41661-0029	26-51-0071	26-51-2070	26.59 (1.047)	23.77 (.936)
8	26-48-1081	41661-0007	41661-0030	26-51-0081	26-51-2080	30.56 (1.203)	27.74 (1.092)
9	26-48-1091	41661-0008	41661-0031	26-51-0091	26-51-2090	34.52 (1.359)	31.71 (1.248)
10	26-48-1101	41661-0009	41661-0032	26-51-0101	26-51-2100	38.48 (1.515)	35.66 (1.404)
11	26-48-1111	41661-0010	41661-0033	26-51-0111	26-51-2110	42.44 (1.671)	39.62 (1.560)
12	26-48-1121	41661-0011	41661-0034	26-51-0121	26-51-2120	46.41 (1.827)	43.59 (1.716)
13	26-48-1131	41661-0012	41661-0035	26-51-0131	26-51-2130	50.37 (1.983)	47.55 (1.872)

Circuits	Order No.					Dimension	
	Square Pin			Round Pin		A	B
	Tin	15μ" Select Gold	30μ" Select Gold	Tin	Overall Gold		
14	26-48-1141	41661-0013	41661-0036	26-51-0141	26-51-2140	54.33 (2.139)	51.51 (2.028)
15	26-48-1151	41661-0014	41661-0037	26-51-0151	26-51-2150	58.29 (2.295)	55.47 (2.184)
16	26-48-1161	41661-0015	41661-0038	26-51-0161	26-51-2160	62.26 (2.451)	59.44 (2.340)
17	26-48-1171	41661-0016	41661-0039	26-51-0171	26-51-2170	66.22 (2.607)	63.40 (2.496)
18	26-48-1181	41661-0017	41661-0040	26-51-0181	26-51-2180	70.18 (2.763)	67.36 (2.652)
19	26-48-1191	41661-0018	41661-0041	26-51-0191	26-51-2190	74.14 (2.919)	71.32 (2.808)
20	26-48-1201	41661-0019	41661-0042	26-51-0201	26-51-2200	78.11 (3.075)	75.29 (2.964)
21	26-48-1211	41661-0020	41661-0043	26-51-0211	26-51-2210	82.07 (3.231)	79.25 (3.120)
22	26-48-1221	41661-0021	41661-0044	26-51-0221	26-51-2220	86.03 (3.387)	83.21 (3.276)
23	26-48-1231	41661-0022	41661-0045	26-51-0231	26-51-2230	89.94 (3.541)	87.17 (3.432)
24	26-48-1241	41661-0023	41661-0046	26-51-0241	26-51-2240	93.85 (3.695)	91.14 (3.588)

\* Dependent upon connector and PC board

Circuit number designation is for ordering purposes only, check corresponding circuit designation on mating connector