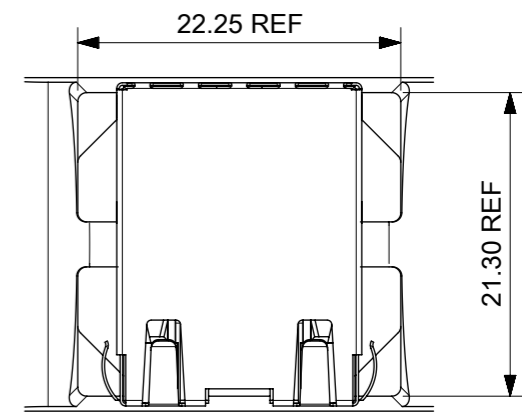
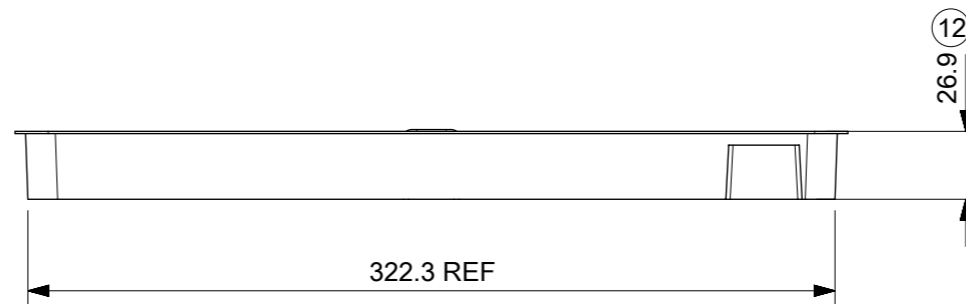
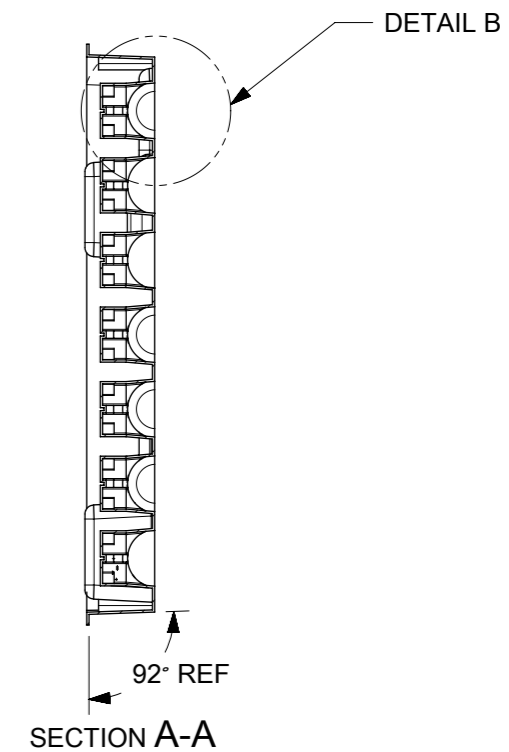
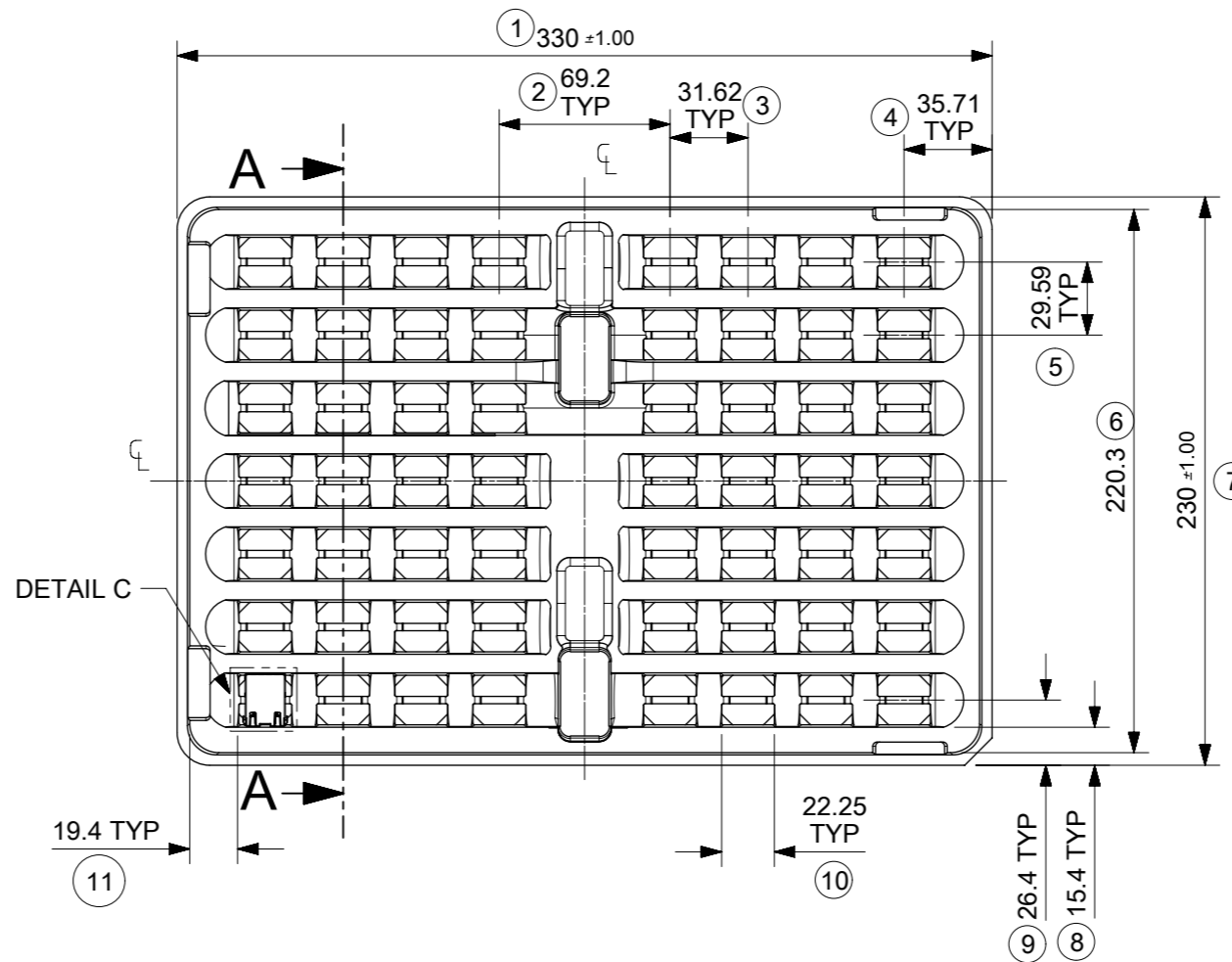


DETAIL B



DETAIL C  
SCALE 2:1



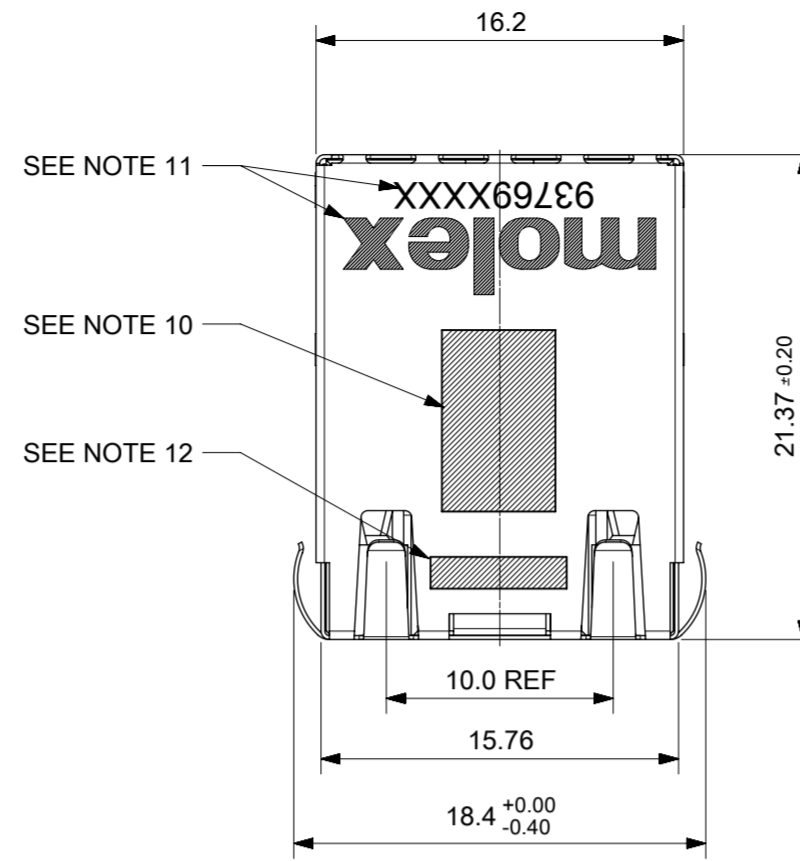
NOTES:

1. MATERIAL: PETA ANTISTATIC
2. THICKNESS: 0.9 mm ± 0.05 mm
3. COLOUR: CLEAR
4. BOW 2 mm MAXIMUM PER 330 mm
5. TWIST 2 mm MAXIMUM PER 330 mm
6. TRAY PART NO. AND RECYCLE LOGO TO BE CLEARLY MARKED ON TRAY  
RECYCLE LOGO SHOULD BE APPROPRIATE TO MATERIAL USED
7. WHERE RELEVANT, DIMENSIONS SHOULD BE SYMMETRICAL ABOUT THE CENTRELINE
8. GENERAL PROFILE TOLERANCE  $\overline{\cup}$  0.40 ON NON DIMENSIONED FEATURES

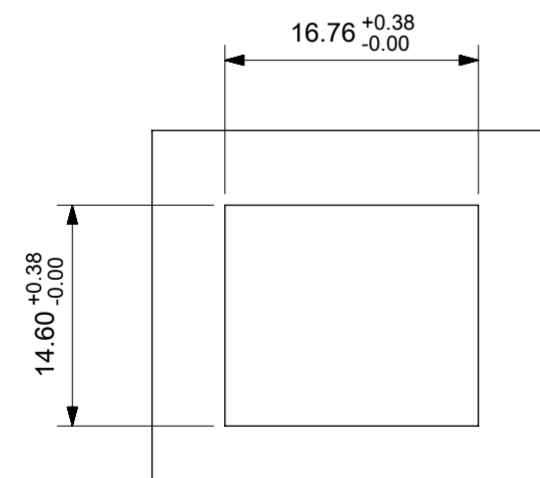
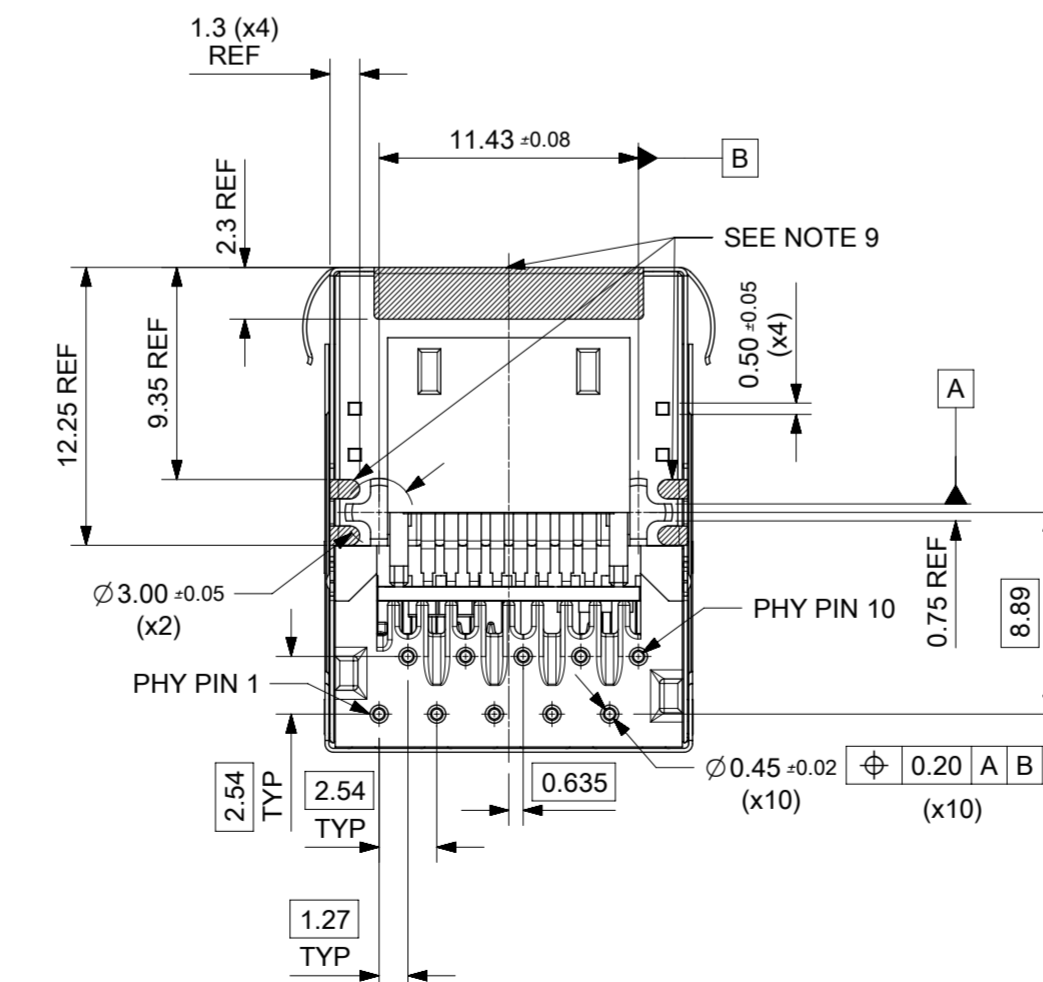
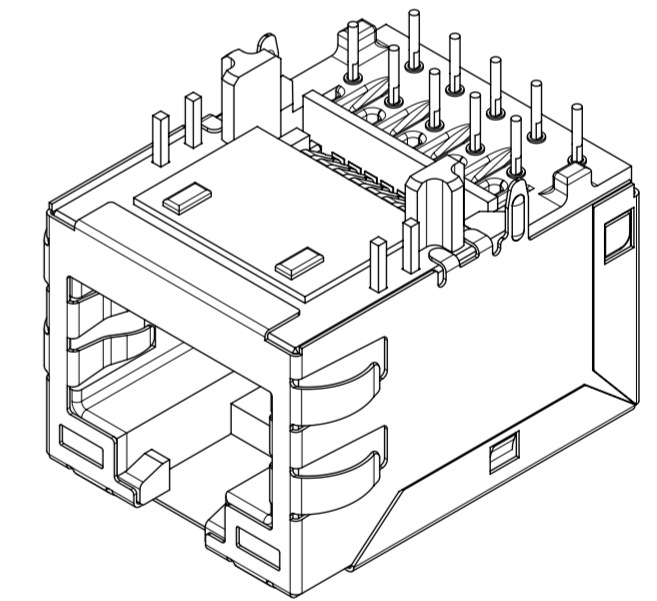
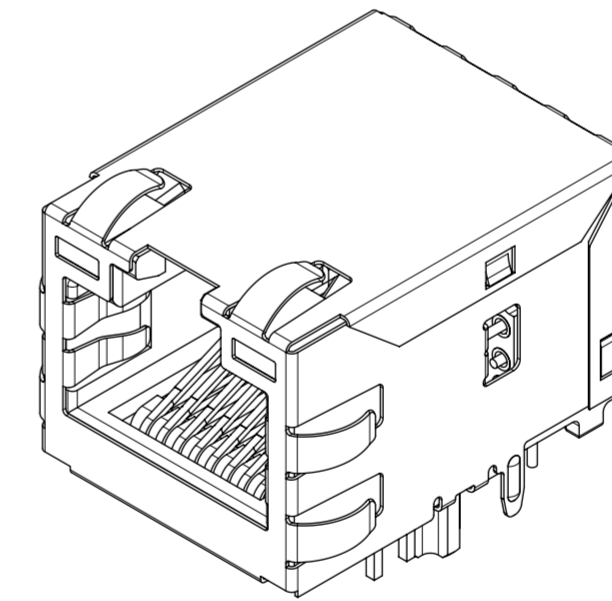
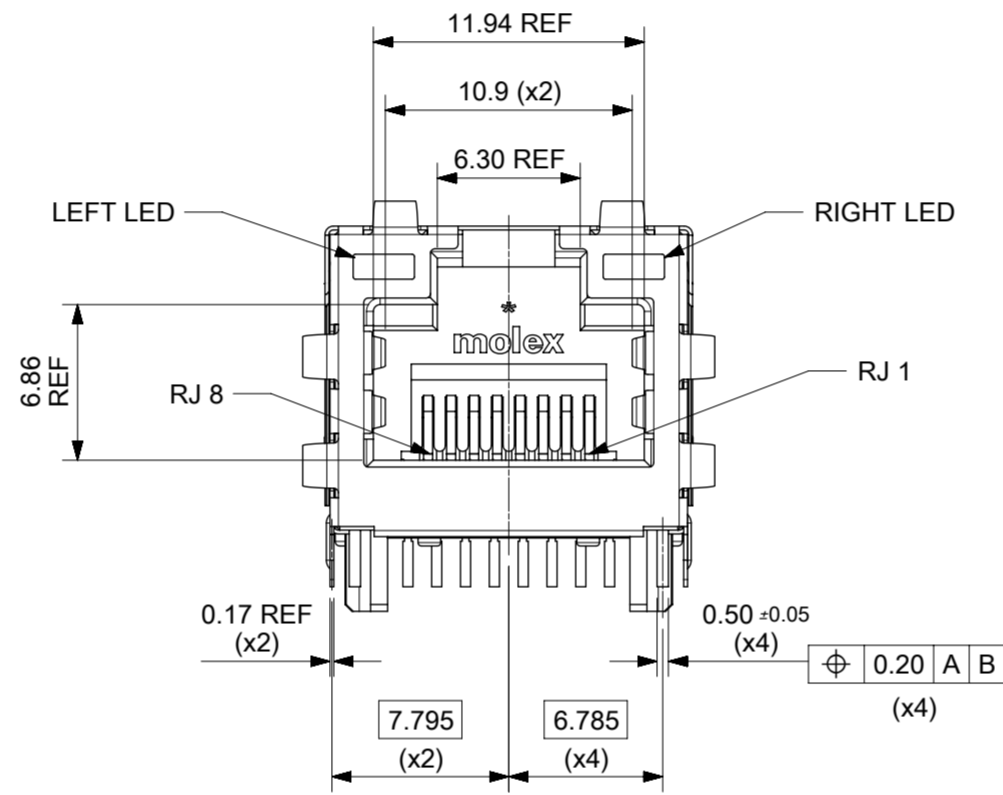
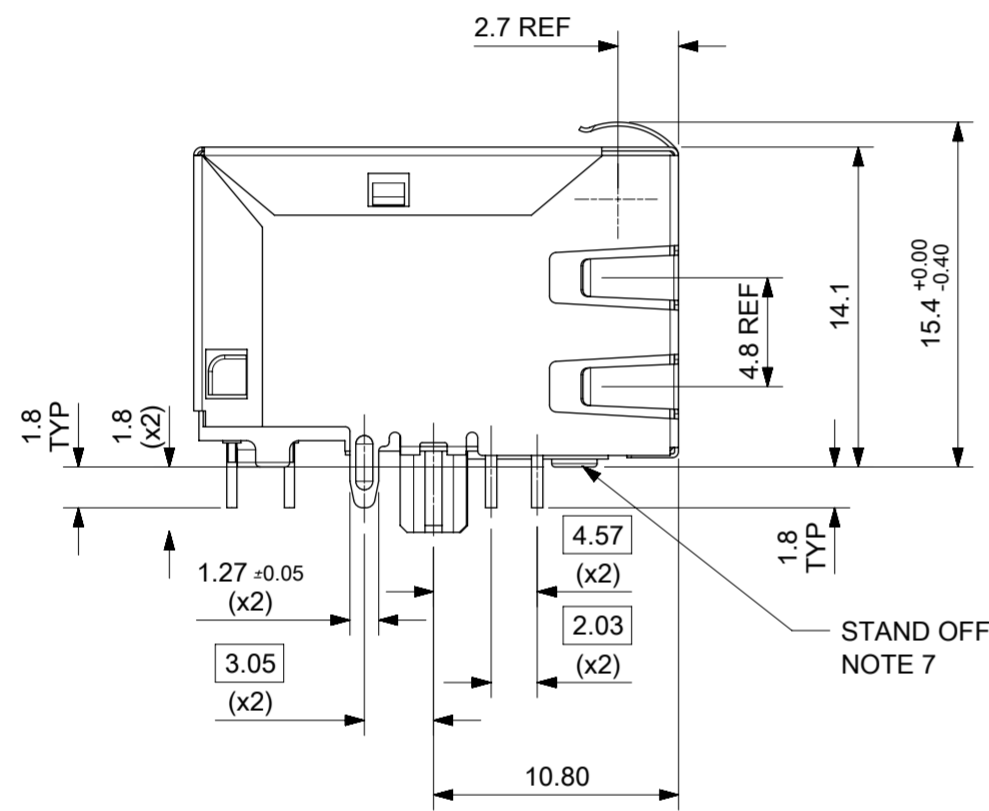
LAST INSPECTION NUMBER USED: 12

THIS DRAWING CONTAINS INFORMATION THAT IS PROPRIETARY TO MOLEX ELECTRONIC TECHNOLOGIES, LLC AND SHOULD NOT BE USED WITHOUT WRITTEN PERMISSION									
DIMENSION UNITS		SCALE		CURRENT REV DESC: REMOVED REFERENCE TO QUANTITY OF TRAYS PER STACK				<b>molex</b>	
mm		1:3							
GENERAL TOLERANCES (UNLESS SPECIFIED)				EC NO: 602124				MXMAG STANDARD AND INVERTED TRAY	
ANGULAR TOL ± 1.0°				DRWN: DSHEA 2018/09/07					
4 PLACES ±				CHK'D: DBYRNES 2019/01/25				PRODUCT CUSTOMER DRAWING	
3 PLACES ±				APPR: DBYRNES 2019/01/25					
2 PLACES ± 0.2				INITIAL REVISION:				DOCUMENT NUMBER	
1 PLACE ± 0.5				DRWN: KREILLY 2016/05/06				934620003	
0 PLACES ±				APPR: STGRIFFIN 2016/12/07				DOC TYPE DOC PART REVISION	
DRAFT WHERE APPLICABLE MUST REMAIN WITHIN DIMENSIONS				THIRD ANGLE PROJECTION		DRAWING		MATERIAL NUMBER	
				A3-SIZE		SERIES		CUSTOMER	
				93462		990250150		GENERAL MARKET	
								SHEET NUMBER	
								1 OF 1	

INVERTED PROFILE MAGNETIC JACK  
GIGABIT ETHERNET W/LED  
AND W/SHIELD TABS  
PIN IN PASTE CAPABLE

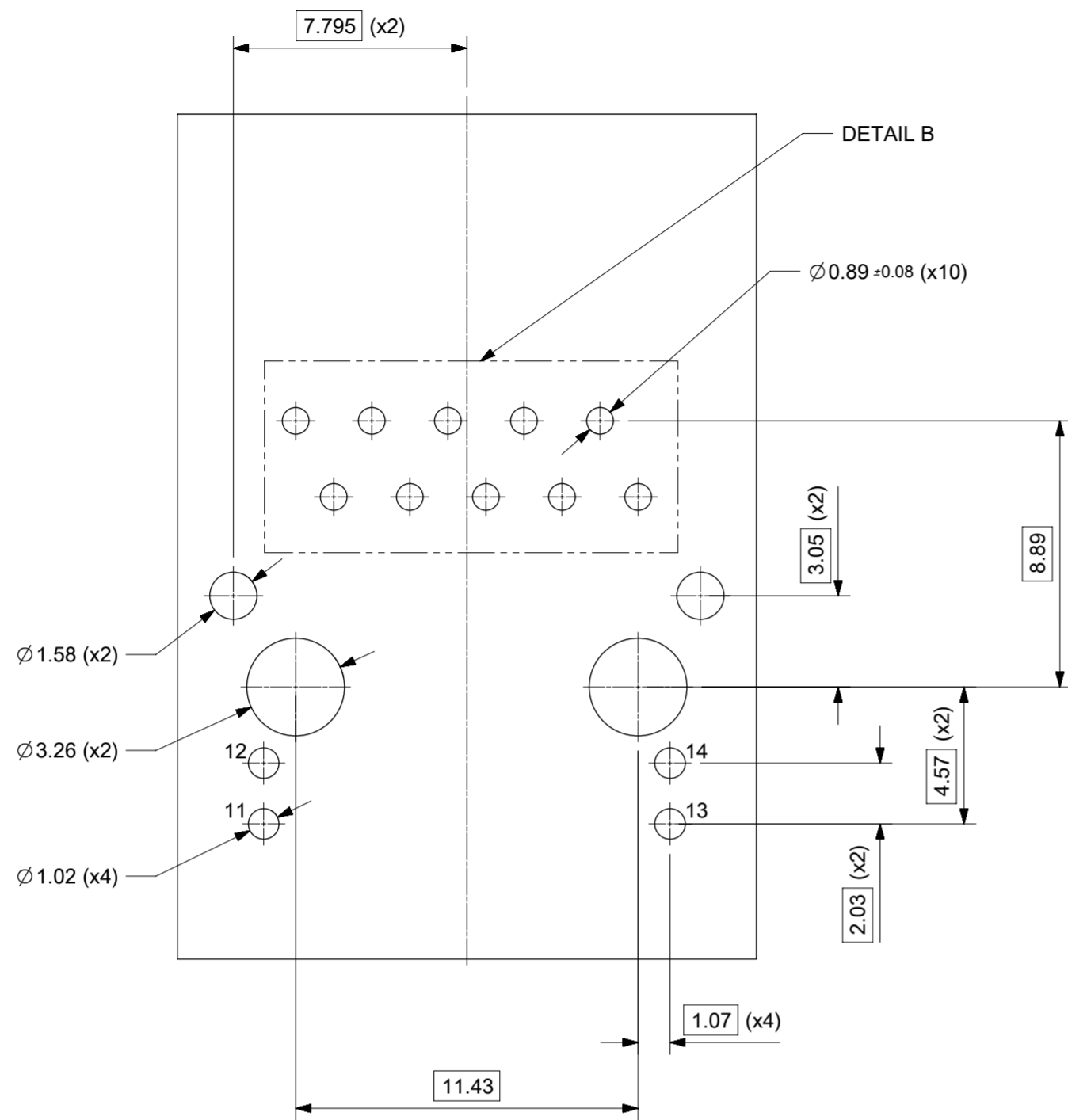


- NOTES:
- SHIELD MATERIAL: 0.17 mm THICK BRASS PRE-PLATED WITH NICKEL  
SOLDER TABS POST DIPPED WITH MIN 1.27 μm TIN.
  - HOUSING MATERIAL: LCP, BLACK, UL 94V-0
  - TERMINALS MATERIAL: PHOSPHOR BRONZE  
RJ45 CONTACTS PLATING: BASE NICKEL PLATED WITH GOLD  
FLASH OVER PALLADIUM NICKEL. REFER TO 934620001 PSP  
PHY SOLDER TAILS: COPPER ALLOY
  - MATING INTERFACE ACCORDING TO IEC 60603-7 & TIA-1096-A
  - PRODUCT SPECIFICATION: 934620001 PSP
  - PACKAGING SPECIFICATION: 934620002 PSK T&R
  - STAND OFF TO SYSTEM BOARD 0.30 mm MIN
  - RECOMMENDED PCB THICKNESS: 1.57 mm
  - SHIELD: AVOID ROUTING TRACES  
OR PLACING ANY VIAS BELOW THESE AREAS
  - AREA FOR PICK AND PLACE: 5.0 mm X 8.0 mm
  - INSCRIPTION MARKED BY LASER:  
1st : MOLEX  
2nd : P/N (SEE BOM)
  - INSCRIPTION MARKED BY LASER:  
DATE CODE(DAY/WEEK/YEAR)
  - MATERIAL COMPLIANT TO RoHS DIRECTIVE 2002/95/EC

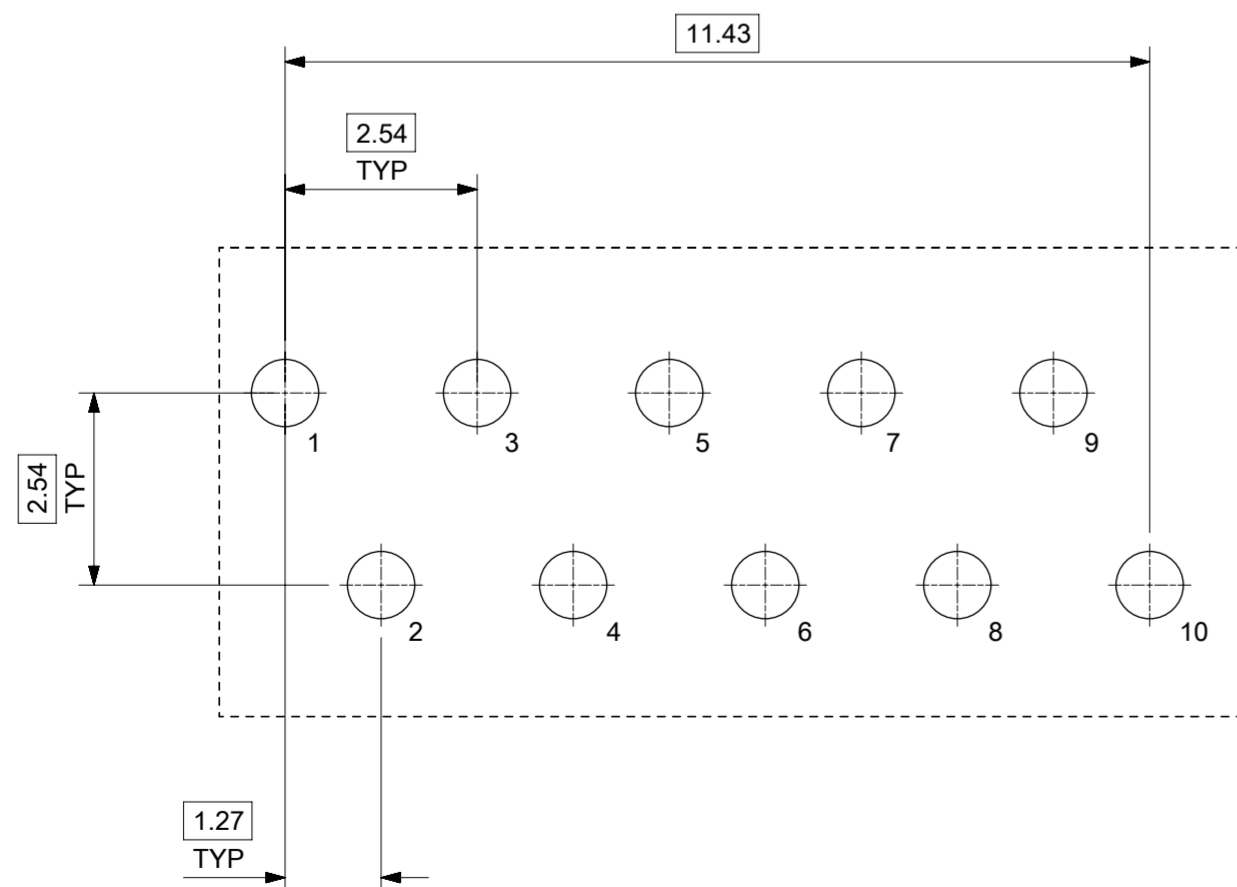


SUGGESTED PANEL CUT-OUT

THIS DRAWING CONTAINS INFORMATION THAT IS PROPRIETARY TO MOLEX ELECTRONIC TECHNOLOGIES, LLC AND SHOULD NOT BE USED WITHOUT WRITTEN PERMISSION		GENERAL TOLERANCES (UNLESS SPECIFIED)		DIMENSION UNITS	SCALE	<b>molex</b>				
		mm		3:1	INV PRO MXMAG 8 CORE GIG W/LED W/EMI PIP					
REVISED	EC NO: 116686	DRWN: DBYRNES	CHKD: DSHEA	APPR: DBYRNES	DRWN BY	DATE	PRODUCT CUSTOMER DRAWING			
	2017/04/12	2017/09/12	2017/09/12	2017/09/26	KREILLY	2016/03/14				
	4 PLACES	±			CH'D BY	DATE				
	3 PLACES	±			DBYRNES	2016/05/24				
	2 PLACES	±	0.1		APPR BY	DATE				
1 PLACE	±	0.2		STGRIFFIN	2016/06/08	SERIES	MATERIAL NUMBER	CUSTOMER		
0 PLACES	±					93769	SEE TABLE ON SHEET 2	GENERAL MARKET		
DRAFT WHERE APPLICABLE MUST REMAIN WITHIN DIMENSIONS		DRAWING SIZE		THIRD ANGLE PROJECTION		DOCUMENT NUMBER		DOC TYPE	DOC PART	SHEET NUMBER
A2		A2		THIRD ANGLE PROJECTION		937690001		PSD	000	1 OF 3



SUGGESTED BOARD LAYOUT  
GIGABIT VERSION  
COMPONENT SIDE  
ALL DIMS REFERENCE DIMS



DETAIL B  
SCALE 10:1  
PIN CONFIGURATION  
FOR GIGABIT VERSION

PART NUMBER	LEFT LED	RIGHT LED
937698628	GREEN/YELLOW	GREEN/YELLOW

THIS DRAWING CONTAINS INFORMATION THAT IS PROPRIETARY TO MOLEX ELECTRONIC TECHNOLOGIES, LLC AND SHOULD NOT BE USED WITHOUT WRITTEN PERMISSION			
REVISED EC NO: 116686 DRWN: DBYRNES CHKD: DSHEA REV / APPR: DBYRNES	2017/04/12	2017/09/12	2017/09/26
	GENERAL TOLERANCES (UNLESS SPECIFIED)		DIMENSION UNITS
	ANGULAR TOL $\pm 2.0^\circ$		SCALE
	4 PLACES $\pm$		mm
	3 PLACES $\pm$		5:1
3 PLACES $\pm$		DRWN BY	DATE
2 PLACES $\pm 0.1$		KREILLY	2016/03/14
1 PLACE $\pm 0.2$		CHK'D BY	DATE
0 PLACES $\pm$		DBYRNES	2016/05/24
DRAFT WHERE APPLICABLE MUST REMAIN WITHIN DIMENSIONS		APPR BY	DATE
A2		STGRIFFIN	2016/06/08
DRAWING SIZE		THIRD ANGLE PROJECTION	
A2			
C		PRODUCT CUSTOMER DRAWING SERIES: 93769 MATERIAL NUMBER: SEE TABLE CUSTOMER: GENERAL MARKET	
RELEASE STATUS: P1		DOCUMENT NUMBER: 937690001	
RELEASE DATE: 26.09.2017 10:55:54		DOC TYPE: PSD DOC PART: 000 SHEET NUMBER: 2 OF 3	

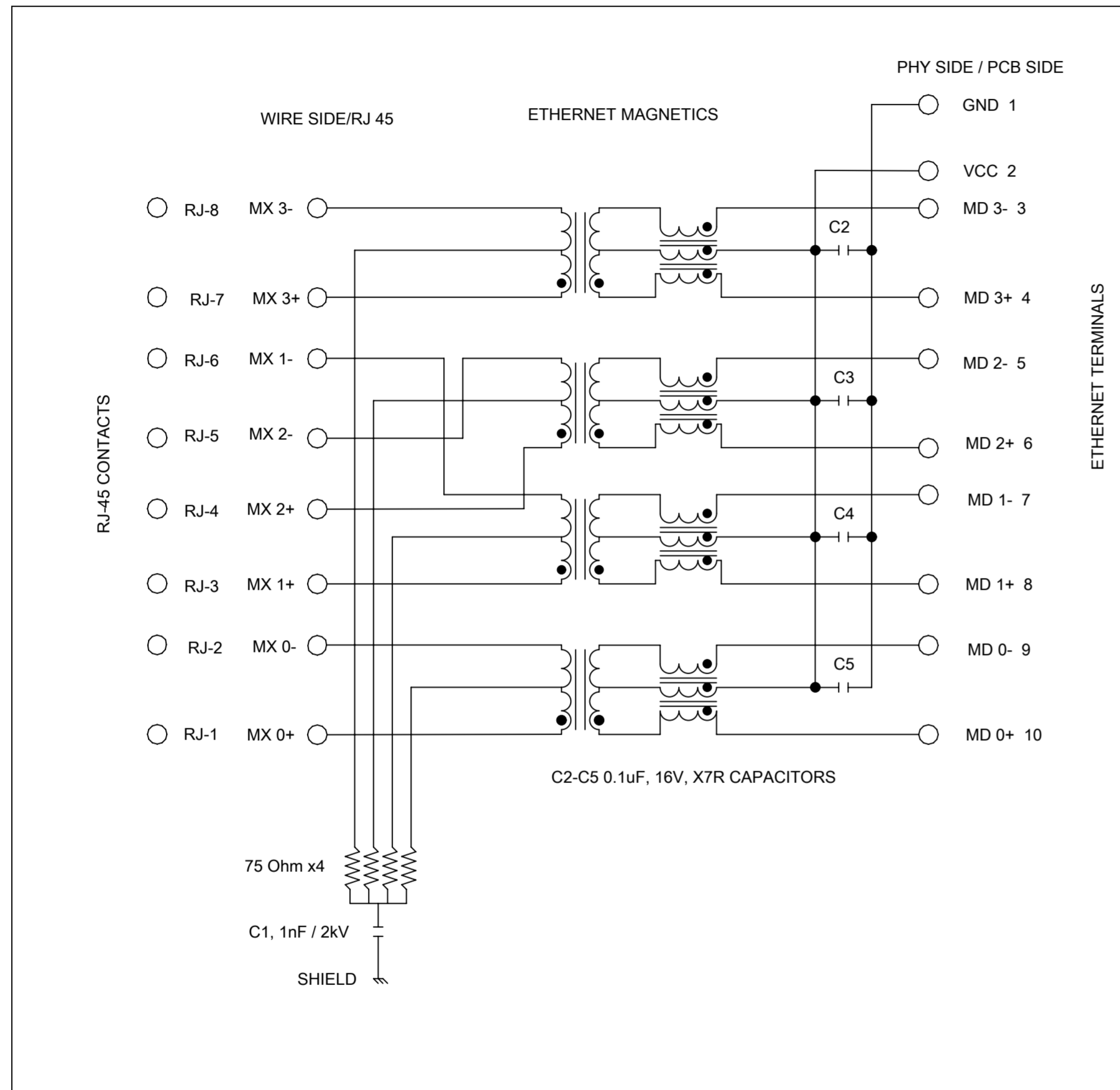
**molex**

INV PRO MXMAG 8 CORE GIG W/LED W/EMI PIP

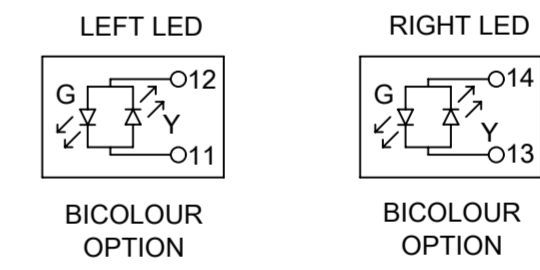
PRODUCT CUSTOMER DRAWING

SERIES: 93769 MATERIAL NUMBER: SEE TABLE CUSTOMER: GENERAL MARKET

DOCUMENT NUMBER: 937690001 DOC TYPE: PSD DOC PART: 000 SHEET NUMBER: 2 OF 3



Description	Value	
OCL @100 kHz, 0.1 V 8 mA DC bias (-40°C to +85°C)	350 µH min.	
Turns ratio	1CT:1CT	
Transmission characteristics @ 25°C, all four pairs		
Insertion Loss		
Frequency f, (MHz)	Limits (dB max.)	Typical Values (dB max.)
1.0-9.9	0.4+0.1*log(f)	0.5 @ 10 MHz
10-49.9	0.5+0.3*log(f/10)	0.7 @ 50 MHz
50-79.9	1+1.4*log(f/80)	1.0 @ 80 MHz
80-100	1.3+3*log(f/100)	1.3 @ 100 MHz
Return Loss		
Frequency f, (MHz)	Limits (dB min.)	Typical Values (dB min.)
1.0-39.9	18	18 @ 40 MHz
40-100	12-20*log(f/80)	10 @ 100 MHz
CMR		
Frequency f, (MHz)	Limits (dB min.)	Typical Values (dB min.)
1.0-100	30	30 @ 100 MHz
Next		
Frequency f, (MHz)	Limits (dB min.)	Typical Values (dB min.)
1.0-39.9	35	35 @ 40 MHz
40-100	33-20*log(f/50)	27 @ 100 MHz
Isolation PHY to wire side	2.25 kVDC/60sec	



937698628

THIS DRAWING CONTAINS INFORMATION THAT IS PROPRIETARY TO MOLEX ELECTRONIC TECHNOLOGIES, LLC AND SHOULD NOT BE USED WITHOUT WRITTEN PERMISSION									
REVISED	EC NO: 116686	DRWN: DBYRNES	CHKD: DSHEA	REV / APPR: DBYRNES	GENERAL TOLERANCES (UNLESS SPECIFIED)	DIMENSION UNITS	SCALE	<b>molex</b>	
	2017/04/12	2017/09/12	2017/09/12	2017/09/26	mm	1:1			
	4 PLACES ±	KREILLY		DATE	2016/03/14	INV PRO MXMAG 8 CORE GIG W/LED W/EMI PIP			
	3 PLACES ±	CHK'D BY		DATE	2016/05/24	PRODUCT CUSTOMER DRAWING			
	2 PLACES ± 0.1	APPR BY		DATE	2016/06/08	SERIES	MATERIAL NUMBER	CUSTOMER	
1 PLACE ± 0.2	STGRIFFIN		2016/06/08	93769	SEE TABLE ON SHEET 2	GENERAL MARKET			
0 PLACES ±	DRAFT WHERE APPLICABLE MUST REMAIN WITHIN DIMENSIONS		DRAWING SIZE	THIRD ANGLE PROJECTION	DOCUMENT NUMBER	DOC TYPE	DOC PART	SHEET NUMBER	
A2			A2		937690001	PSD	000	3 OF 3	