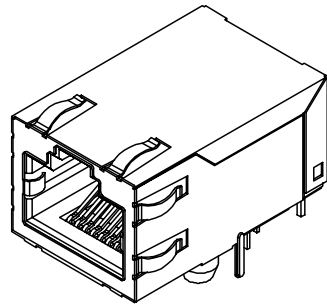
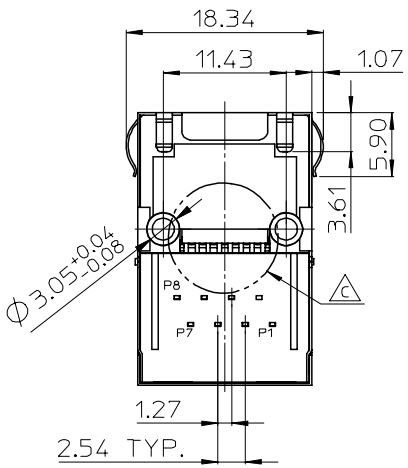
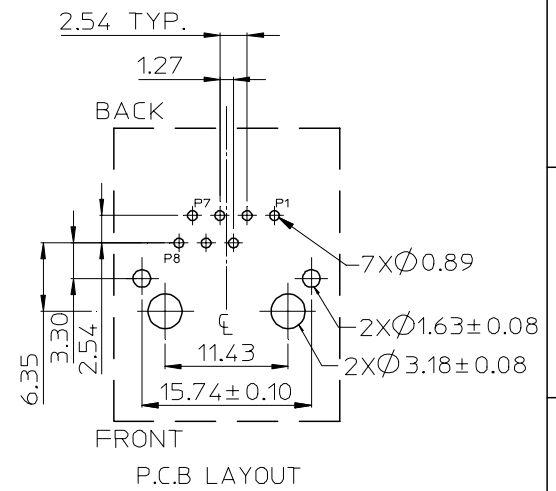
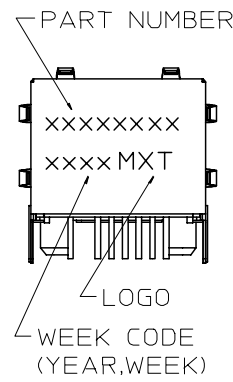
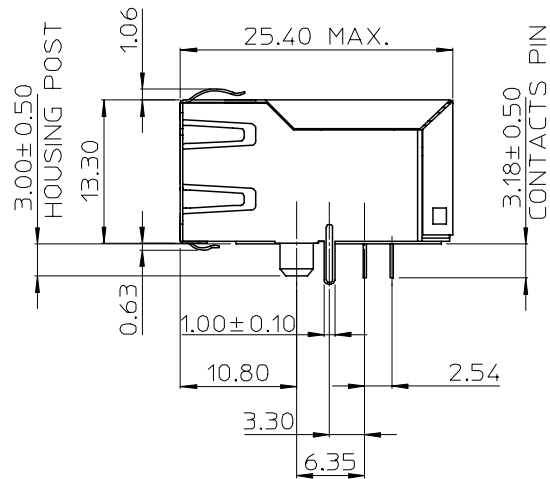
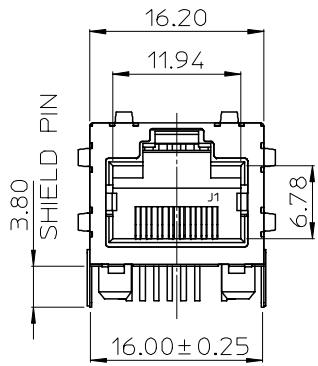


10 9 8 7 6 5 4 3 2 1



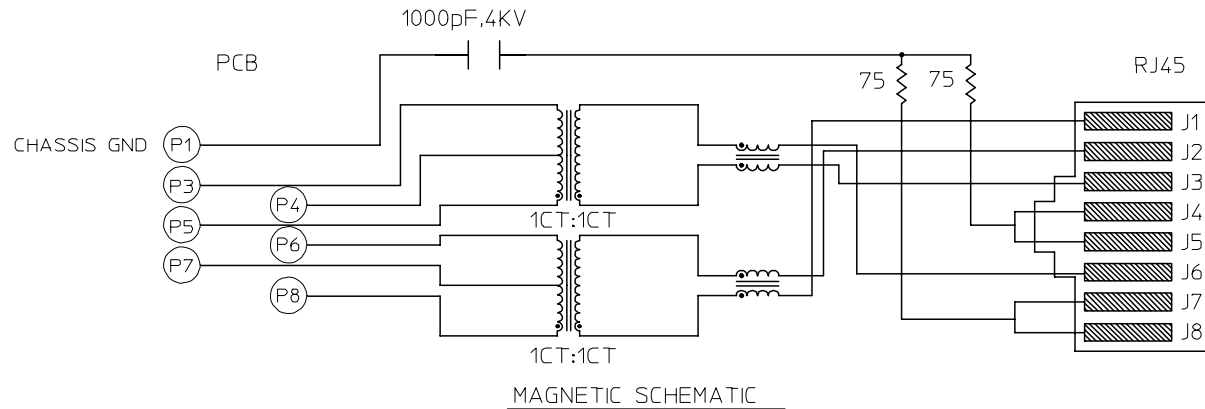
- NOTES:
- MATERIAL:
 METAL SHELL: BRASS
 HOUSING: HIGH TEMP THERMOPLASTIC,UL94-0,COLOR BLACK
 INSERT: HIGH TEMP THERMOPLASTIC,UL94-0,COLOR BLACK
 TERMINAL: PHOSPHOR BRONZE
 - PLATING:
 TERMINAL:
 CONTACT AREA: GOLD(Au),THICKNESS=50 MICROINCH/1.27 MICROMETER
 SOLDER TAIL: TIN(Sn),THICKNESS=100 MICROINCH MINIMUM
 UNDER PLATE: NICKEL (Ni).
 METAL SHELL:
 SOLDER TAIL: TIN(Sn),THICKNESS=100 MICROINCH MINIMUM
 UNDER PLATE: NICKEL (Ni),(SOLDERING AVAILABLE)
 SURFACE APPEARANCE: BRIGHT.
 - RECOMMENDED PCB THICKNESS: 1.60±0.05
 - PRODUCT SPECIFICATION REFER TO PS-48025-003
 - TEST SUMMARY REFER TO TS-48025-003
 - PACKAGING SPECIFICATION REFER TO PK-48025-001

PER EWR 2006-0062 EC NO: SH2006-0376 DRWN:ALLIN 2006/02/10 CHKD: 2006/02/14 APPR:WMSCHANG 2006/02/14	QUALITY SYMBOLS ▽=0 ▽=0	GENERAL TOLERANCES (UNLESS SPECIFIED)		DIMENSION STYLE MM ONLY		SCALE	DESIGN UNITS METRIC	THIRD ANGLE PROJECTION		
			mm	INCH	DRAWN BY	DATE	TITLE			
		4 PLACES	±---	±---	LINDA	2004/04/19	MADULAR JACK (4KV) WITH INTERGRATED MAGNETICS WITHOUT LED MOLEX INCORPORATED			
		3 PLACES	±---	±---	CHECKED BY	DATE				
2 PLACES	±0.25	±---	SAM SHIN	2004/04/19	APPROVED BY					
1 PLACE	±0.25	±---	WILSON CHANG	2004/04/19	MATERIAL NO.		DOCUMENT NO.		SHEET NO.	
DRAFT WHERE APPLICABLE MUST REMAIN WITHIN DIMENSIONS		ANGULAR ± 3 °		48025-3000		SD-48025-004		1 OF 2		
THIS DRAWING CONTAINS INFORMATION THAT IS PROPRIETARY TO MOLEX INCORPORATED AND SHOULD NOT BE USED WITHOUT WRITTEN PERMISSION										

9 8 7 6 5 4 3 2 1

ELECTRICAL SPECIFICATIONS:

- 1.0 TURNS RATIO:(P5-P4-P3):(J3-J6):1CT:1CT
(P8-P7-P6):(J1-J2):1CT:1CT
- 2.0 INDUCTANCE:(P8-P6):350uH MIN. @0.1V,100KHz,8mA DC Bias.
(P3-P5):350uH MIN. @0.1V,100KHz,8mA DC Bias.
- 3.0 LEAKAGE INDUCTANCE:P5-P3(WITH J6 AND J3 SHORT):0.3 MAX.@1MHz.
P8-P6(WITH J2 AND J1 SHORT):0.3 MAX.@1MHz.
- 4.0 INTERWINNING CAPACITANCE:(P5,P4,P3) TO (J6,J3):30pf MAX @1MHz.
(P8,P7,P6) TO (J2,J1):30pf MAX @1MHz.
- 5.0 DC RESISTANCE:(J6-J3)=(J2-J1):1.2 ohms Max.
- 6.0 RETURN LOSS:(P5-P3)=100 OHMS(P8-P6)=100 OHM REF.
1MHz TO 30MHz:18db min.:18dB MIN.
30MHz TO 80MHz:12db min.12dB MIN.
- NOTE:100 OHMS CONNECTED TO (J2-J1) TO (J6-J3).
- 7.0 HI-POT:(J1,J2) TO (P8,P6):1500 VAC.
(J3,J6) TO (P5,P3):1500 VAC.
- 8.0 INSERTION LOSS:RS=RL=100 ohms:1.1 dB MAX.
100KHz TO 100MHz.
- 9.0 CROSS TALK:1-100 MHz:30 dB MIN.
- 10.0 COMMON TO COMMON MODE REJECTION:1MHz TO 100MHz:35 dB MIN.



MAGNETIC SCHEMATIC

SEE SHEET 1 EC NO: SH2006-0376 DRWN:ALLIN CHKD: APPR:WMSCHANG	2006/02/10 2006/02/14 2006/02/14	QUALITY SYMBOLS ▽=0 ▽=0	GENERAL TOLERANCES (UNLESS SPECIFIED)		DIMENSION STYLE MM ONLY		SCALE 1:1	DESIGN UNITS METRIC	THIRD ANGLE PROJECTION			
							DRAWN BY LINDA	DATE 2004/04/19	TITLE MADULAR JACK (4KV) WITH INTERGRATED MAGNETICS WITHOUT LED			
							CHECKED BY SAM SHIN	DATE 2004/04/19				
									APPROVED BY WILSON CHANG	DATE 2004/04/19	MOLEX INCORPORATED	
						MATERIAL NO.	DOCUMENT NO. SD-48025-004			SHEET NO. 2 OF 2		
DRAFT WHERE APPLICABLE MUST REMAIN WITHIN DIMENSIONS			SIZE A3		THIS DRAWING CONTAINS INFORMATION THAT IS PROPRIETARY TO MOLEX INCORPORATED AND SHOULD NOT BE USED WITHOUT WRITTEN PERMISSION							