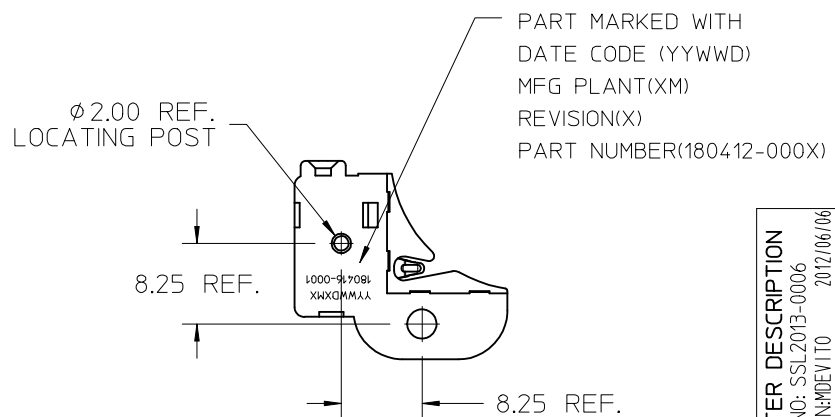
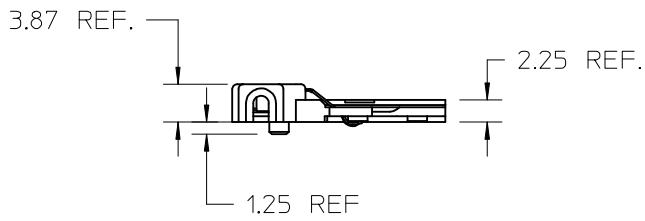
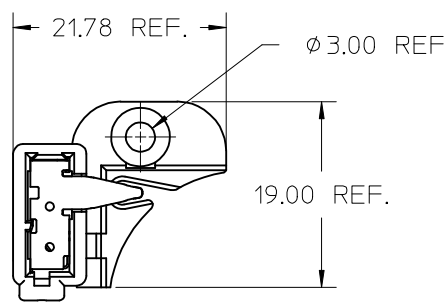


10	9	8	7	6	5	4	3	2	1
PART NUMBER	DESCRIPTION								
180416-0001	CLL040-CLL050 HOLDER ASSEMBLY - NO CAP								
180416-0002	CLL040-CLL050 HOLDER ASSEMBLY - CAP WITH TAB								
180416-0003	CLL040-CLL050 HOLDER ASSEMBLY - CAP WITHOUT TAB								

HOLDER ASSEMBLY - NO CAP



NOTES:

1. MATERIALS: HOUSING: POLYAMIDE (PA66), GLASS FILLED, UL94V-0, 5VA (89992-0289); CAP: POLYAMIDE (PA66) UNFILLED, UL94V-0 (89992-0922); TERMINAL: COPPER ALLOY
2. FINISHES: TERMINAL: NICKEL (Ni) UNDERPLATE 1.27 μ m, SELECT TIN (Sn) 2.54 μ m, SELECT GOLD (Au) 0.76 μ m
3. PRODUCT SPECIFICATION: PS-180412-001
4. PACKAGING SPECIFICATION: PK-180416-001
5. APPLICATION SPECIFICATION: AS-180412-001
6. FOR USE WITH: CITIZEN COB SERIES CLL040 OR CLL050 LEDS
7. HOLDER ASSEMBLY AVAILABLE WITH OPTIONAL CAP SEE CHART FOR PART NUMBERS
8. TWO HOLDER ASSEMBLIES ARE REQUIRED FOR EACH LED.
9. WIRE GAUGE: 18 OR 20 AWG, SOLID OR STRANDED WITH TIN OVERCOAT. STRIP LENGTH 1CM.
10. UL:OLFB2 UL496 FILE: E345583 (PENDING)

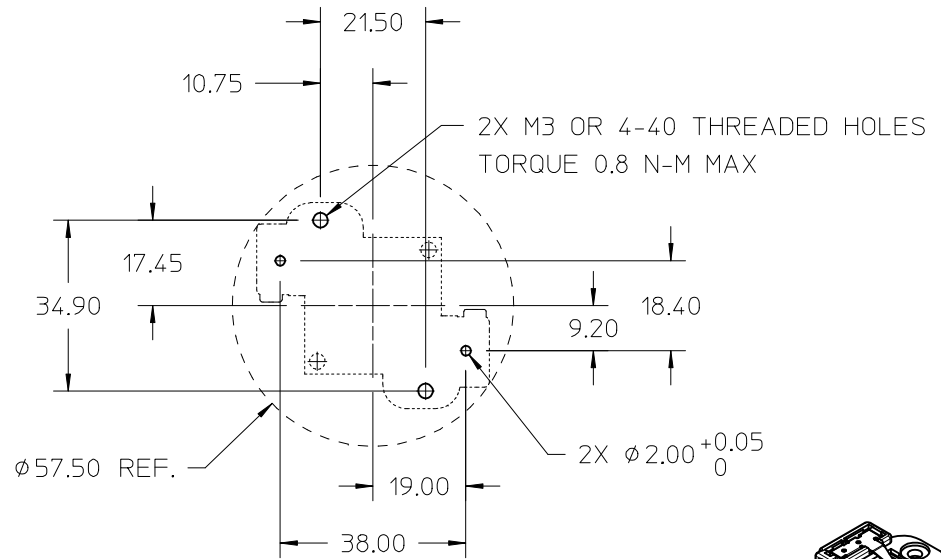
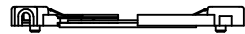
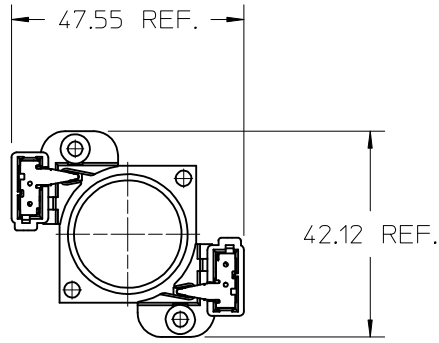


ISOMETRIC VIEW
Scale 1:1

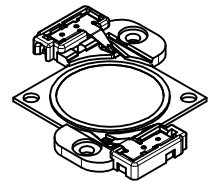
SHEET 1 SCALE 2:1

ENTER DESCRIPTION EC NO: SSL2013-0006 DRAWN BY: DRWINDEVITO 2012/06/06 CHKD: MCOLE 2012/06/06 APPR: DMCGOWAN 2012/08/06 REV B	QUALITY SYMBOLS ▽/0 ▽/0 ▽/0	GENERAL TOLERANCES (UNLESS SPECIFIED)		DIMENSION STYLE MM ONLY		SCALE 2:1	DESIGN UNITS METRIC	THIRD ANGLE PROJECTION	
				DRAWN BY: MCOLE DATE: 2012/01/30	TITLE CITIZEN COB SERIES CLL040-CLL050 HOLDER ASSEMBLY				
				CHECKED BY: MCOLE DATE: 2012/05/15	MATERIAL NO. SEE CHART		DOCUMENT NO. SD-180416-001	SHEET NO. 1 OF 4	
		DRAFT WHERE APPLICABLE MUST REMAIN WITHIN DIMENSIONS		ANGULAR $\pm 1/2^\circ$		MOLEX INCORPORATED		THIS DRAWING CONTAINS INFORMATION THAT IS PROPRIETARY TO MOLEX INCORPORATED AND SHOULD NOT BE USED WITHOUT WRITTEN PERMISSION	

ILLUSTRATION OF CLL040 LED WITH TWO HOLDER ASSEMBLIES - NO CAP



RECOMMENDED MOUNTING DIMENSIONS

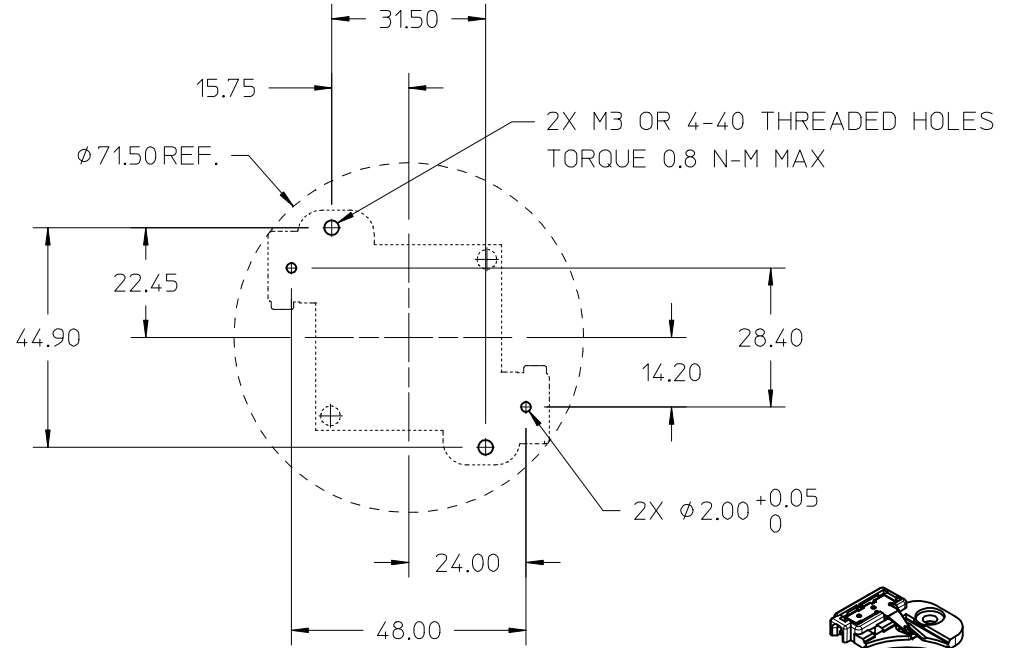
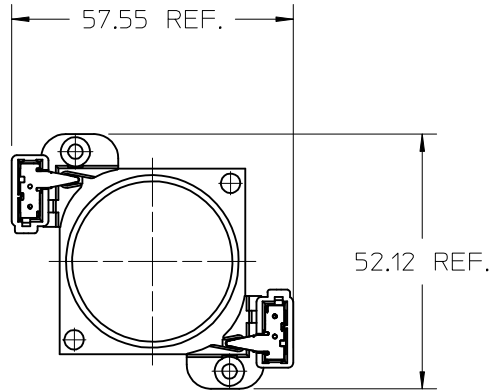


ISOMETRIC VIEW
Scale 1:1

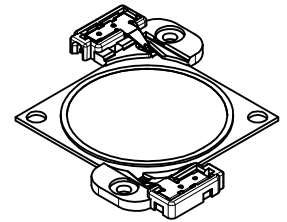
SHEET 2 SCALE 1:1

ENTER DESCRIPTION EC NO: SSL2013-0006 DRAWN: MDEVITO 2012/06/06 CHKD: MCOLE 2012/06/06 APPR: DMCGOWAN 2012/08/06 B	DESCRIPTION REV	QUALITY SYMBOLS	GENERAL TOLERANCES (UNLESS SPECIFIED)		DIMENSION STYLE MM ONLY		SCALE 1:1	DESIGN UNITS METRIC	THIRD ANGLE PROJECTION	
		▽=0	mm	INCH	DRAWN BY MCOLE	DATE 2012/01/30	TITLE CITIZEN COB SERIES CLL040-CLL050 HOLDER ASSEMBLY			
		▽=0	4 PLACES ±---	±---	CHECKED BY MCOLE	DATE 2012/05/15				
		▽=0	2 PLACES ±0.13	±---	APPROVED BY	DATE	MOLEX INCORPORATED DOCUMENT NO. SD-180416-001		SHEET NO. 2 OF 4	
▽=0	1 PLACE ±0.25	±---	ANGULAR ±1/2°		MATERIAL NO. SEE CHART		THIS DRAWING CONTAINS INFORMATION THAT IS PROPRIETARY TO MOLEX INCORPORATED AND SHOULD NOT BE USED WITHOUT WRITTEN PERMISSION			
DRAFT WHERE APPLICABLE MUST REMAIN WITHIN DIMENSIONS										

ILLUSTRATION OF CLL050 LED WITH TWO ASSEMBLIES - NO CAP



RECOMMENDED MOUNTING DIMENSIONS

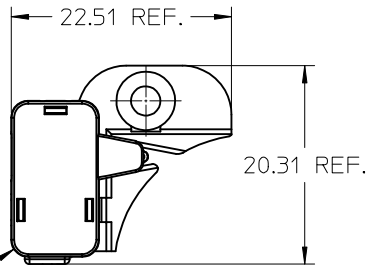


ISOMETRIC VIEW
Scale 1:1

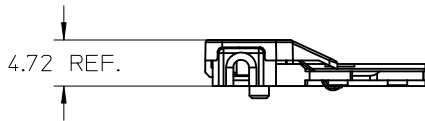
SHEET 3 SCALE 1:1

ENTER DESCRIPTION EC NO: SSL2013-0006 DRAWN: DEVITO 2012/06/06 CHKD: MCOLE 2012/06/06 APPR: DMCCOWAN 2012/08/06 REV B	QUALITY SYMBOLS ▽/0 ▽/0 ▽/0	GENERAL TOLERANCES (UNLESS SPECIFIED) mm INCH 4 PLACES ± --- ± --- 3 PLACES ± --- ± --- 2 PLACES ± 0.13 ± --- 1 PLACE ± 0.25 ± --- ANGULAR ± 1/2°	DIMENSION STYLE MM ONLY DRAWN BY DATE MCOLE 2012/01/30 CHECKED BY DATE MCOLE 2012/05/15 APPROVED BY DATE	SCALE 1:1 DESIGN UNITS METRIC THIRD ANGLE PROJECTION	TITLE CITIZEN COB SERIES CLL040-CLL050 HOLDER ASSEMBLY
	DRAFT WHERE APPLICABLE MUST REMAIN WITHIN DIMENSIONS		MATERIAL NO. SEE CHART	DOCUMENT NO. SD-180416-001	SHEET NO. 3 OF 4
			THIS DRAWING CONTAINS INFORMATION THAT IS PROPRIETARY TO MOLEX INCORPORATED AND SHOULD NOT BE USED WITHOUT WRITTEN PERMISSION		

HOLDER ASSEMBLY - CAP WITH TAB

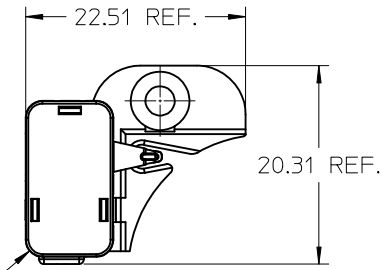


CAP WITH TAB
P/N 180417-0001
(SEE NOTE 7)

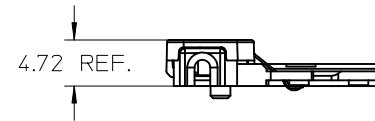


ISOMETRIC VIEW
Scale 1:1

HOLDER ASSEMBLY - CAP WITHOUT TAB



CAP WITHOUT TAB
P/N 180417-0002
(SEE NOTE 7)



ISOMETRIC VIEW
Scale 1:1

ENTER DESCRIPTION EC NO: SSL2013-0006 DRAWN: DEVITO 2012/06/06 CHKD: MCOLE 2012/06/06 APPR: DMCCOWAN 2012/08/06 B	QUALITY SYMBOLS ▽/0 ▽/0 ▽/0	GENERAL TOLERANCES (UNLESS SPECIFIED) <table border="1"> <thead> <tr> <th></th> <th>mm</th> <th>INCH</th> </tr> </thead> <tbody> <tr> <td>4 PLACES</td> <td>± ---</td> <td>± ---</td> </tr> <tr> <td>3 PLACES</td> <td>± ---</td> <td>± ---</td> </tr> <tr> <td>2 PLACES</td> <td>± 0.13</td> <td>± ---</td> </tr> <tr> <td>1 PLACE</td> <td>± 0.25</td> <td>± ---</td> </tr> <tr> <td>0 PLACE</td> <td>± ---</td> <td>± ---</td> </tr> </tbody> </table>		mm	INCH	4 PLACES	± ---	± ---	3 PLACES	± ---	± ---	2 PLACES	± 0.13	± ---	1 PLACE	± 0.25	± ---	0 PLACE	± ---	± ---	DIMENSION STYLE MM ONLY	SCALE 2:1	DESIGN UNITS METRIC	THIRD ANGLE PROJECTION
		mm	INCH																					
	4 PLACES	± ---	± ---																					
	3 PLACES	± ---	± ---																					
	2 PLACES	± 0.13	± ---																					
1 PLACE	± 0.25	± ---																						
0 PLACE	± ---	± ---																						
MATERIAL NO. SEE CHART	DOCUMENT NO. SD-180416-001	TITLE CITIZEN COB SERIES CLL040-CLL050 HOLDER ASSEMBLY	SHEET NO. 4 OF 4																					
ANGULAR ±1/2° DRAFT WHERE APPLICABLE MUST REMAIN WITHIN DIMENSIONS				THIS DRAWING CONTAINS INFORMATION THAT IS PROPRIETARY TO MOLEX INCORPORATED AND SHOULD NOT BE USED WITHOUT WRITTEN PERMISSION																				
molex																								