

Molex's heat sinks for LED array holders provide fast, effective cooling via a highly-efficient heat-dissipating design, ensuring the maximum life of LED arrays

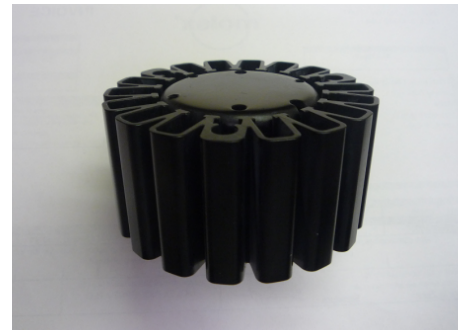
Molex's Heat Sinks enable customers to install Molex LED Array Holders quickly into fixtures and allow for field replacements and facilitating upgrades to current or existing applications. Molex heat sinks ensure that proper heat dissipation is achieved when installing any of the Molex LED array holders with 40.00mm (1.57") screw centers.

These heat sinks will be pre-drilled and tapped to accommodate screws needed to attach the holder, minimizing the risk of cracking.

For more information visit: www.molex.com/link/heatsinkarray.html.

Heat Sinks for LED Array Holders

**180289 80.00mm (3.15") Diameter
40.00mm (1.57") Height**



*Heat Sink for Molex LED Array Holders (Side View)
40.00mm (1.57") center
pre-drilled and tapped screw holes*



*Heat Sink for Molex LED Array Holders (Top View)
40.00mm (1.57") center
pre-drilled and tapped screw holes*

FEATURES AND BENEFITS

- 15 to 20W of power dissipation at +25°C ambient condition allows effective heat dissipation for all Molex LED array holders with 40.00mm (1.57") screw centers
- Accommodates all Molex LED array holders with 40.00mm (1.57") screw centers including series 180150, 180160, 180190, 180220, ideal for lamp and small-fixture applications or retrofit/rework designs
- Pre-drilled and tapped #5-40 screw holes ensure simple mounting of the LED array and holder to heat sink
- Pre-drilled wire routes for powering the LED application allow flexibility and pre-determined path for wiring or powering LED arrays
- Available in un-treated or black anodized aluminum which provides a clean, finished look for lighting applications
- Heat sink made from highly-efficient drawn-metal and extrusion process for fast and effective cooling of LED arrays, provides proper air flow for heat dissipation and improves the performance and life of the LED array
- Exclusively designed to hold Molex LED array holders which simplifies the array-to-heat-sink installation process when using Molex LED array holders and provides a low-cost cooling method for LED lighting applications that use Molex LED array holders with 40.00mm (1.57") screw centers

SPECIFICATIONS

Reference Information

Packaging: Stacked Box
cUL File No.: E345583
Designed In: Millimeters
RoHS: Yes
REACH: No SVHC

Electrical

Power Dissipation: 15 to 20W max.

Mechanical

Pre-drilled Wire Path: Yes
Pre-drilled Wire Pull Out: Yes
Mounting Method:
Pre-drilled/Tapped 40.00mm (1.57") Centers

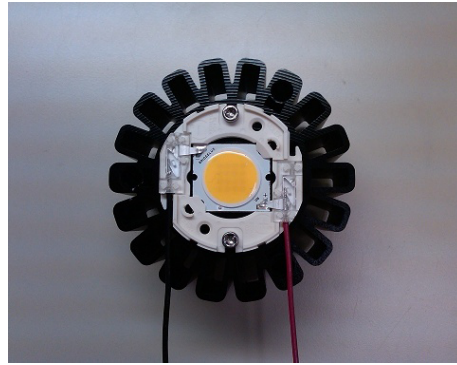
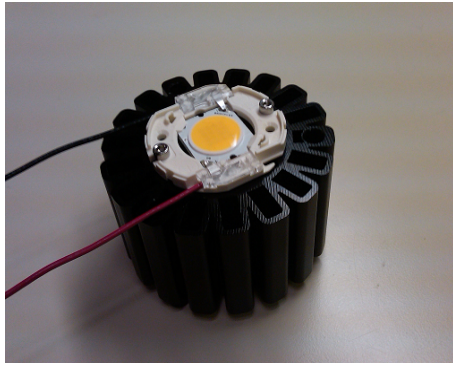
Physical

Material: Aluminum Base
Finish: Black Anodized

ORDERING INFORMATION

Order No.	Plating
180289-0000	Black Anodized Aluminum

ADDITIONAL PRODUCT FEATURES



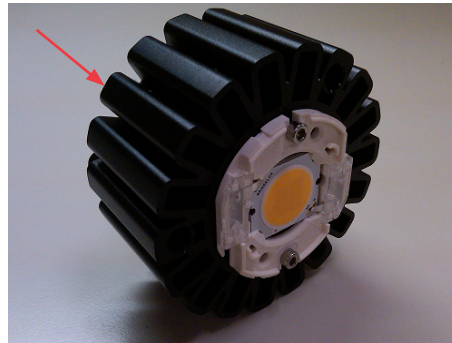
Heat Sinks for LED Array Holders

180289 80.00mm (3.15") Diameter
40.00mm (1.57") Height

Molex LED Array Holder mounted to heat sink in a typical small-fixture application
NOTE: not for use with Helieon® modules



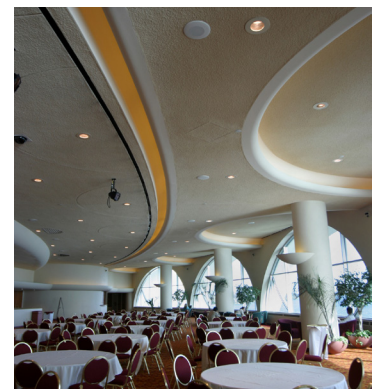
Pre-drilled and tapped mounting holes



Small form factor allows for easy integration or retrofit applications

APPLICATIONS

- All Molex LED array holders with 40.00 (1.57") screw centers
 - Downlighting
 - Track
 - Pendants
 - Linear
 - Architectural
 - Decorative
 - Area Lighting
 - Roadway
 - Parking lots
 - Wall packs
 - Thermal testing solution for prototype builds



Recessed Downlighting in Commercial Applications