

FURTIFF 3, 4 AND 5SSR STAND-ALONE without safety module

NON-CONTACT AND CODED SAFETY SWITCH FOR THE MOVING PROTECTORS OF DANGEROUS MACHINES

- Detection distance/hysteresis/misalignment : 10 / +2 / ± 10 (mm)
- Red LED indicating the code absence
- Dual color LED for the models 4SSR24BX and 5SSR24BXUS
- Mounting brackets and moulded cable
- Connector M12 (5SSR24BXMKT only)
- Polycarbonate housing
- Available in stainless steel 316L (5SSR24BX)
- Protection class IP67
- Temperature -20°C to +60°C

CATEGORY 1

ACOTOM®



EN954-1

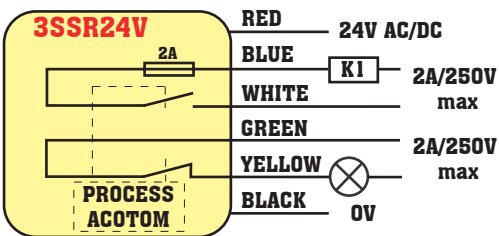
CONTACT 250V

EN60947-5-1

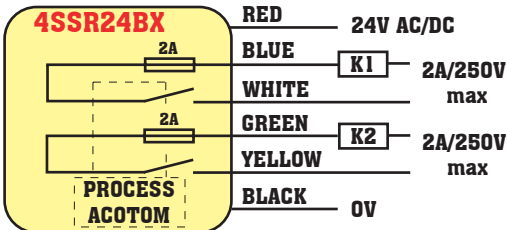
SAFETY CATEGORY

3SSR24V/4SSR24BX/5SSR24BX : category 1
4SSR24BX / 5SSR24BX in series + safety module : category 3 (category 4 with only one switch)

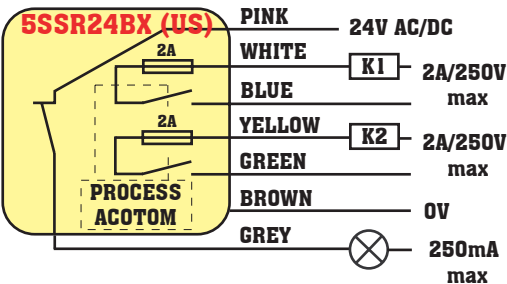
ELECTRICAL DIAGRAM



cat. 1

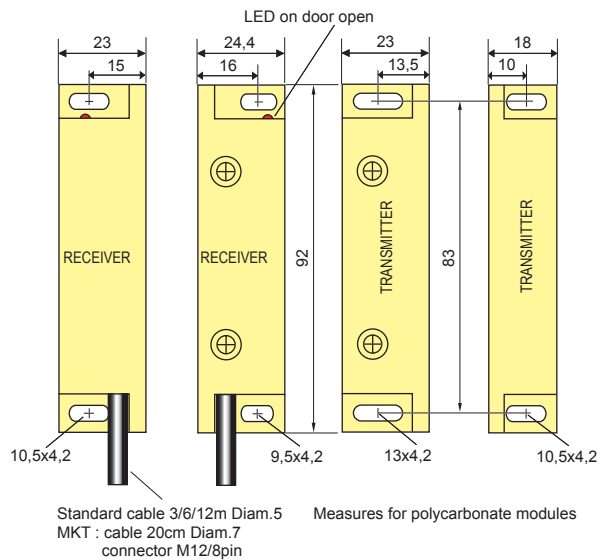


cat. 1



cat. 1

DIMENSIONS



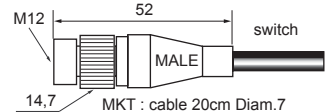
PIN DETAILS FOR MKT CONNECTOR

FRONT VIEW

5SSR24BX/MKT



1 white : NO1 5 grey : AUX
2 brown : 0V 6 pink : 24V
3 green : NO2 7 blue : NO1
4 yellow : NO2 8 nc



ADVICE

Note : the green/yellow line of the 5SSR24BX is closed in case of lack of power supply.

It replaces the mechanical switches. You can benefit from an easy mounting with a high authorized misalignment and a coding system, uncheatable even with a horseshoe magnet.

DIAGRAMS

application DIAGRAM

ACCESS PROTECTION IN category 1

category 3 OF THE POWER PARTS

