



# 2.54mm Mini Jumper

## MATERIAL

Insulator : Polyester  
Contact Pin : Brass / Phosphor Bronze

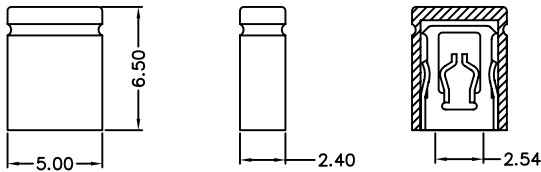
## SPECIFICATION

Current Rate : 1 AMP  
Insulation Resistance : 1000MΩMin.  
Contact Resistance : 30mΩMax.  
Operation Temperature : -55°C to +105°C

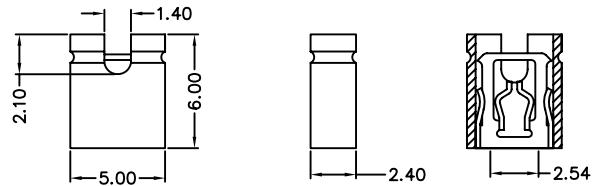


## Detail Dimensions

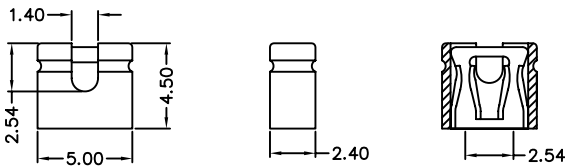
200-71-xAGB50 | A Type Close H=6.5mm



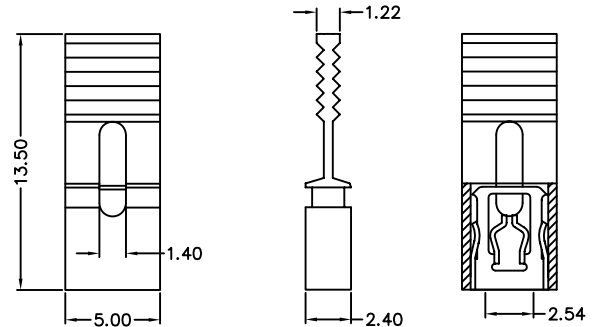
200-71-xBGB50 | B Type Open H=6.0mm



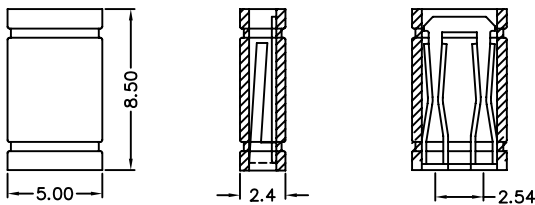
200-71-PCGB02 | C Type Open H=4.5mm



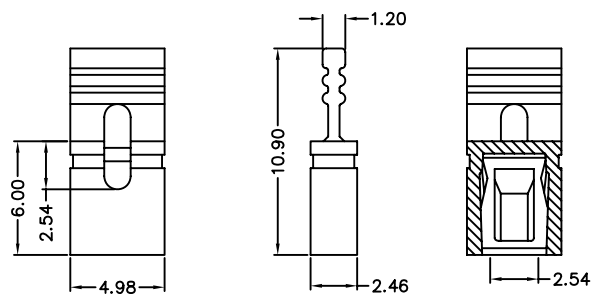
200-71-xDGB50 | D Type with handle H=13.5mm



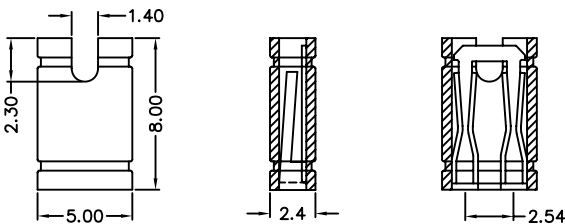
200-71-PEGB02 | E Type Close H=8.5mm



200-71-PHGB03 | H Type with handle H=10.9mm



200-71-PFGB02 | F Type Open H=8.0mm



## Order Information

200-71-xxGBxx  
1 2 3 4 5 6

- 1. 7: Green Product
- 2. B: Brass
- P: Phosphor Bronze
- 3. A: Close Type H=6.5mm
- B: Open Type H=6.0mm
- C: Open Type H=4.5mm
- D: With Handle H=13.5mm

- E: Close Type H=8.5mm
- F: Open Type H=8.0mm
- H: With Handle H=10.9mm
- 4. G: Gold Flash
- T: Tin Plating
- 5. B: Black Insulator
- 6. Pinrex internal code

Standard Parts
200-71-BAGB50
200-71-BBGB50
200-71-PCGB02
200-71-BDGB50
200-71-PEGB02
200-71-PFGB02
200-71-PHGB03

Unit: mm