

# WIRE WOUND CHIP INDUCTORS SFI/SWI/SCI SERIES

## Introductions

The SFI/SWI/SCI series are chip inductors widely used in the communication applications such as cellular phones, pagers ,and other electronic devices. The wire wound features advance in higher self resonate frequency, better Q factor, and much more stable performance.

## Features

- \* Operating temperature -40 °C to + 85 °C.
- \* Excellent solderability and resistance to soldering heat .
- \* Suitable for flow and reflow soldering..
- \* Good dimensions, high reliability, and easy surface mount assembly.
- \* At least 3 types of materials provide wide range of inductance value for flexible needs.

## Part Number Code

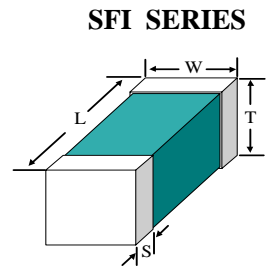
**SFI 0603 C T 3N3 J**    

---

**1      2      3      TAPING   4      5      Internal Code**

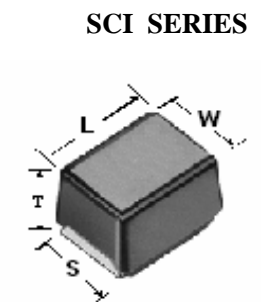
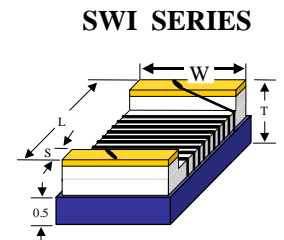
### 1. Product Type

SFI Series : Laser cut  
 SWI Series : Wire Wound  
 SCI Series : Molding



### 2. Chip Dimension

Size (inch) mm	Length (L) (inch) mm	Width (W) (inch) mm	Thickness (T) (inch) mm	Terminal (S) (inch) mm
SFI 0402 1005	(0.039 ± 0.004) 1.00 ± 0.10	(0.020 ± 0.004) 0.50 ± 0.10	(0.020 ± 0.004) 0.50 ± 0.10	(0.0098 ± 0.004) 0.25 ± 0.10
SFI 0603 1608	(0.063 ± 0.008) 1.60 ± 0.20	(0.031 ± 0.008) 0.80 ± 0.20	(0.031 ± 0.008) 0.80 ± 0.20	(0.016 ± 0.004) 0.30 ± 0.10
SWI 0603 1608	(0.063 ± 0.008) 1.60 ± 0.20	(0.041 ± 0.008) 1.05 ± 0.20	(0.041 ± 0.008) 1.05 ± 0.20	(0.014 ± 0.004) 0.35 ± 0.10
SWI 0805 2012	(0.080 ± 0.008) 2.00 ± 0.20	(0.050 ± 0.008) 1.25 ± 0.20	(0.048 ± 0.008) 1.20 ± 0.20	(0.016 ± 0.004) 0.40 ± 0.10
SWI 1008 2520	(0.098 ± 0.008) 2.50 ± 0.20	(0.063 ± 0.008) 2.00 ± 0.20	(0.063 ± 0.008) 1.60 ± 0.20	(0.020 ± 0.004) 0.50 ± 0.10
SWI 1210 3225	(0.126 ± 0.008) 3.20 ± 0.20	(0.098 ± 0.008) 2.50 ± 0.20	(0.087 ± 0.008) 2.20 ± 0.20	(0.020 ± 0.004) 0.50 ± 0.10
SCI 1210 FT 3225	(0.126 ± 0.008) 3.20 ± 0.20	(0.098 ± 0.008) 2.50 ± 0.20	(0.087 ± 0.008) 2.20 ± 0.20	(0.075 ± 0.004) 1.90 ± 0.10
SCI 1210 HT 3225	(0.126 ± 0.008) 3.20 ± 0.20	(0.098 ± 0.008) 2.50 ± 0.20	(0.087 ± 0.008) 2.20 ± 0.20	(0.039 ± 0.004) 1.00 ± 0.10
SCI 1812 4532	(0.180 ± 0.008) 4.50 ± 0.20	(0.126 ± 0.008) 3.20 ± 0.20	(0.126 ± 0.008) 3.20 ± 0.20	(0.102 ± 0.004) 2.60 ± 0.10



### 3. Material Type

C : Ceramic                      F : Ferrite                      H : High Current

### 4. Inductance Value

3N3 = 3.3 nH                      R33 = 330 nH                      330 = 33 uH  
 33N = 33 nH                      3R3 = 3.3 uH                      331 = 330 uH

### 5. Tolerance

B = ± 0.15 nH                      G = ± 2%                      K = ± 10%  
 S = ± 0.3 nH                      J = ± 5%                      M = ± 20%

Specification

Part No.	Inductance <sup>1</sup> (nH)	Percent Tolerance	Q <sup>2</sup>		S.R.F. <sup>3</sup> Min (MHZ)	RDC <sup>4</sup> Max (OHM)	IDC <sup>5</sup> Max (MA)
			Min	Typical			
SWI 0402CT 1N0 □□□	1.0 @ 250 MHZ	B, S	13	26	6000	0.045	1360
SWI 0402CT 2N0 □□□	2.0 @ 250 MHZ	B, S	16	30	6000	0.070	1040
SWI 0402CT 2N2 □□□	2.2 @ 250 MHZ	B, S	18	32	6000	0.070	960
SWI 0402CT 3N3 □□□	3.3 @ 250 MHZ	B, S	20	41	6000	0.066	840
SWI 0402CT 3N6 □□□	3.6 @ 250 MHZ	B, S	20	43	6000	0.066	840
SWI 0402CT 3N9 □□□	3.9 @ 250 MHZ	B, S	20	41	5800	0.066	840
SWI 0402CT 5N1 □□□	5.1 @ 250 MHZ	B, J, K	23	49	5800	0.083	800
SWI 0402CT 5N6 □□□	5.6 @ 250 MHZ	B, J, K	23	46	5800	0.083	760
SWI 0402CT 6N2 □□□	6.2 @ 250 MHZ	B, J, K	23	49	5800	0.083	760
SWI 0402CT 7N5 □□□	7.5 @ 250 MHZ	B, J, K	25	50	5800	0.104	680
SWI 0402CT 8N2 □□□	8.2 @ 250 MHZ	B, J, K	25	49	4400	0.104	680
SWI 0402CT 9N0 □□□	9.0 @ 250 MHZ	B, J, K	25	49	4160	0.104	680
SWI 0402CT 10N □□□	10 @ 250 MHZ	K, J, G	23	47	3900	0.195	480
SWI 0402CT 11N □□□	11 @ 250 MHZ	K, J, G	26	56	3680	0.120	640
SWI 0402CT 12N □□□	12 @ 250 MHZ	K, J, G	26	51	3600	0.120	640
SWI 0402CT 15N □□□	15 @ 250 MHZ	K, J, G	26	54	3280	0.172	560
SWI 0402CT 19N □□□	19 @ 250 MHZ	K, J, G	26	50	3040	0.202	480
SWI 0402CT 23N □□□	23 @ 250 MHZ	K, J, G	26	53	2720	0.214	400
SWI 0402CT 27N □□□	27 @ 250 MHZ	K, J, G	26	48	2480	0.298	400
SWI 0402CT 36N □□□	36 @ 250 MHZ	K, J, G	26	48	2320	0.403	320
SWI 0402CT 40N □□□	40 @ 250 MHZ	K, J, G	26	48	2240	0.438	320
SWI 0402CT 47N □□□	47 @ 200 MHZ	K, J, G	26	46	2100	0.830	150

1. Inductance is measured in HP-4287A RF LCR meter with HP-16193 fixture.

2. Q is measured in HP-4287A RF LCR meter with HP-16193 fixture.

3. SRF is measured in HP-8753E RF network analyzer with HP-16193 fixture.

4. RDC is measured in HP-4338B milliohmmeter.

5. For 15 °C Rise.

Specification

Part No.	Inductance <sup>1</sup> (nH)	Percent Tolerance	Q <sup>2</sup>		S.R.F. <sup>3</sup> Min (MHZ)	RDC <sup>4</sup> Max (OHM)	IDC <sup>5</sup> Max (MA)
			Min	Typical			
SWI 0603 CT 2N2 □□□	2.2 @ 250 MHZ	B, S	16	31	6900	0.08	700
SWI 0603 CT 3N9 □□□	3.9 @ 250 MHZ	B, S	22	51	6900	0.08	700
SWI 0603 CT 4N7 □□□	4.7 @ 250 MHZ	B, S	20	47	5800	0.11	700
SWI 0603 CT 6N8 □□□	6.8 @ 250 MHZ	B, J, K	30	63	5800	0.11	700
SWI 0603 CT 8N2 □□□	8.2 @ 250 MHZ	B, J, K	30	72	4600	0.10	700
SWI 0603 CT 10N □□□	10 @ 250 MHZ	K, J, G	30	66	4800	0.13	700
SWI 0603 CT 12N □□□	12 @ 250 MHZ	K, J, G	35	72	4000	0.13	700
SWI 0603 CT 15N □□□	15 @ 250 MHZ	K, J, G	35	68	4000	0.17	700
SWI 0603 CT 18N □□□	18 @ 250 MHZ	K, J, G	38	77	3100	0.17	700
SWI 0603 CT 22N □□□	22 @ 250 MHZ	K, J, G	38	70	3000	0.22	700
SWI 0603 CT 27N □□□	27 @ 250 MHZ	K, J, G	40	75	2800	0.22	600
SWI 0603 CT 33N □□□	33 @ 250 MHZ	K, J, G	43	78	2300	0.22	600
SWI 0603 CT 39N □□□	39 @ 250 MHZ	K, J, G	43	66	2200	0.25	600
SWI 0603 CT 47N □□□	47 @ 200 MHZ	K, J, G	40	65	2000	0.28	600
SWI 0603 CT 56N □□□	56 @ 200 MHZ	K, J, G	40	66	1900	0.31	600
SWI 0603 CT 68N □□□	68 @ 200 MHZ	K, J, G	40	57	1700	0.34	600
SWI 0603 CT 72N □□□	72 @ 150 MHZ	K, J, G	35	60	1700	0.49	400
SWI 0603 CT 82N □□□	82 @ 150 MHZ	K, J, G	35	58	1700	0.54	400
SWI 0603 CT R10 □□□	100 @ 150 MHZ	K, J, G	35	51	1400	0.63	400
SWI 0603 CT R12 □□□	120 @ 150 MHZ	K, J, G	35	45	1300	0.65	300
SWI 0603 CT R15 □□□	150 @ 150 MHZ	K, J, G	30	33	1000	0.92	280
SWI 0603 CT R18 □□□	180 @ 100 MHZ	K, J, G	30	26	1000	1.25	240
SWI 0603 CT R22 □□□	220 @ 100 MHZ	K, J, G	30	23	1000	1.70	200
SWI 0603 CT R27 □□□	270 @ 100 MHZ	K, J, G	30	10	1000	1.80	170

1. Inductance is measured in HP-4287A RF LCR meter with HP-16193 fixture.

2. Q is measured in HP-4286A RF LCR meter with HP-16193 fixture.

3. SRF is measured in HP-8753E RF network analyzer with HP-16193 fixture.

4. RDC is measured in HP-4338B milliohmeter.

5. For 15 °C Rise.

Specification

Part No.	Inductance <sup>1</sup> (nH)	Percent Tolerance	Q <sup>2</sup>		S.R.F. <sup>3</sup>		RDC <sup>4</sup>	IDC <sup>5</sup>
			Min	Max	Min (MHZ)	Max (OHM)	Max (MA)	
SWI 0805 CT 2N2 □□□	2.2 @ 250 MHZ	B, S	50 @	1000 MHZ	6000	0.06	800	
SWI 0805 CT 2N7 □□□	2.7 @ 250 MHZ	B, S	35 @	1000 MHZ	6000	0.08	800	
SWI 0805 CT 3N3 □□□	3.3 @ 250 MHZ	B, S	60 @	1000 MHZ	6000	0.08	800	
SWI 0805 CT 3N9 □□□	3.9 @ 250 MHZ	B, S	60 @	1000 MHZ	6000	0.06	600	
SWI 0805 CT 4N7 □□□	4.7 @ 250 MHZ	B, S	60 @	1000 MHZ	5800	0.06	600	
SWI 0805 CT 5N6 □□□	5.6 @ 250 MHZ	B, J, K	60 @	1000 MHZ	5800	0.08	600	
SWI 0805 CT 6N8 □□□	6.8 @ 250 MHZ	B, J, K	60 @	1000 MHZ	5500	0.06	600	
SWI 0805 CT 8N2 □□□	8.2 @ 250 MHZ	B, J, K	60 @	1000 MHZ	5500	0.06	600	
SWI 0805 CT 10N □□□	10 @ 250 MHZ	K, J, G	60 @	500 MHZ	4800	0.08	600	
SWI 0805 CT 12N □□□	12 @ 250 MHZ	K, J, G	60 @	500 MHZ	4100	0.08	600	
SWI 0805 CT 15N □□□	15 @ 250 MHZ	K, J, G	60 @	500 MHZ	3600	0.08	600	
SWI 0805 CT 18N □□□	18 @ 250 MHZ	K, J, G	60 @	500 MHZ	3400	0.08	600	
SWI 0805 CT 22N □□□	22 @ 250 MHZ	K, J, G	60 @	500 MHZ	3300	0.10	600	
SWI 0805 CT 27N □□□	27 @ 250 MHZ	K, J, G	60 @	500 MHZ	2600	0.12	600	
SWI 0805 CT 33N □□□	33 @ 250 MHZ	K, J, G	60 @	500 MHZ	2400	0.15	500	
SWI 0805 CT 39N □□□	39 @ 250 MHZ	K, J, G	60 @	500 MHZ	2100	0.18	500	
SWI 0805 CT 47N □□□	47 @ 200 MHZ	K, J, G	60 @	500 MHZ	1700	0.15	500	
SWI 0805 CT 56N □□□	56 @ 200 MHZ	K, J, G	60 @	500 MHZ	1600	0.25	500	
SWI 0805 CT 68N □□□	68 @ 200 MHZ	K, J, G	60 @	500 MHZ	1450	0.27	500	
SWI 0805 CT 82N □□□	82 @ 150 MHZ	K, J, G	60 @	500 MHZ	1350	0.32	500	
SWI 0805 CT R10 □□□	100 @ 150 MHZ	K, J, G	60 @	500 MHZ	1200	0.43	500	
SWI 0805 CT R12 □□□	120 @ 150 MHZ	K, J, G	50 @	250 MHZ	1100	0.48	500	
SWI 0805 CT R15 □□□	150 @ 100 MHZ	K, J, G	50 @	250 MHZ	950	0.56	400	
SWI 0805 CT R18 □□□	180 @ 100 MHZ	K, J, G	50 @	250 MHZ	900	0.78	400	
SWI 0805 CT R22 □□□	220 @ 100 MHZ	K, J, G	50 @	250 MHZ	860	1.00	400	
SWI 0805 CT R27 □□□	270 @ 100 MHZ	K, J, G	45 @	250 MHZ	850	1.46	350	
SWI 0805 CT R33 □□□	330 @ 100 MHZ	K, J, G	45 @	250 MHZ	800	1.65	300	
SWI 0805 CT R39 □□□	390 @ 100 MHZ	K, J, G	45 @	250 MHZ	780	2.20	210	

1. Inductance is measured in HP-4287A RF LCR meter with HP-16193 fixture.

2. Q is measured in HP-4287A RF LCR meter with HP-16193 fixture.

3. SRF is measured in HP-8753E RF network analyzer with HP-16193 fixture.

4. RDC is measured in HP-4338B milliohmmeter.

5. For 15 °C Rise.

Specification

Part No.	Inductance <sup>1</sup> (uH)	Percent Tolerance	Q <sup>2</sup> Min	S.R.F. <sup>3</sup> Min (MHZ)	RDC <sup>4</sup> Max (OHM)	IDC <sup>5</sup> Max (MA)
SWI 0805 FT R47 □□□	0.47 @ 25.2 MHZ	K, J, G	45 @ 100 MHZ	375	0.95	500
SWI 0805 FT R56 □□□	0.56 @ 25.2 MHZ	K, J, G	45 @ 100 MHZ	340	1.10	450
SWI 0805 FT R68 □□□	0.68 @ 25.2 MHZ	K, J, G	35 @ 100 MHZ	188	1.20	400
SWI 0805 FT R82 □□□	0.82 @ 25.2 MHZ	K, J, G	35 @ 100 MHZ	215	1.50	300
SWI 0805 FT 1R0 □□□	1.0 @ 25.2 MHZ	K, J, G	35 @ 50 MHZ	200	2.13	180
SWI 0805 FT 1R2 □□□	1.2 @ 7.96 MHZ	K, J, G	15 @ 7.96 MHZ	200	2.38	150
SWI 0805 FT 1R5 □□□	1.5 @ 7.96 MHZ	K, J, G	15 @ 7.96 MHZ	200	2.00	130
SWI 0805 FT 1R8 □□□	1.8 @ 7.96 MHZ	K, J, G	15 @ 7.96 MHZ	120	3.00	120
SWI 0805 FT 2R2 □□□	2.2 @ 7.96 MHZ	K, J, G	15 @ 7.96 MHZ	110	3.10	110
SWI 0805 FT 2R7 □□□	2.7 @ 7.96 MHZ	K, J, G	15 @ 7.96 MHZ	100	3.50	100
SWI 0805 FT 3R3 □□□	3.3 @ 7.96 MHZ	K, J, G	15 @ 7.96 MHZ	70	2.30	210
SWI 0805 FT 3R9 □□□	3.9 @ 7.96 MHZ	K, J, G	15 @ 7.96 MHZ	60	2.50	200
SWI 0805 FT 4R7 □□□	4.7 @ 7.96 MHZ	K, J, G	15 @ 7.96 MHZ	50	2.80	180
SWI 0805 FT 5R6 □□□	5.6 @ 7.96 MHZ	K, J, G	15 @ 7.96 MHZ	45	3.00	160
SWI 0805 FT 6R8 □□□	6.8 @ 7.96 MHZ	K, J, G	15 @ 7.96 MHZ	45	3.20	130
SWI 0805 FT 8R2 □□□	8.2 @ 7.96 MHZ	K, J, G	15 @ 7.96 MHZ	40	3.50	120
SWI 0805 FT 100 □□□	10 @ 2.52 MHZ	K, J, G	10 @ 2.52 MHZ	40	5.00	80

1. Inductance is measured in HP-4285A Precision LCR meter/  
HP-4287A RF LCR meter with HP-16193 fixture.  
2. Q is measured in HP-4285A Precision LCR meter,  
HP-4287A RF LCR meter with HP-16193 fixture.

3. SRF is measured in HP-8753E RF network analyzer  
with HP-16193 fixture.  
4. RDC is measured in HP-4338B milliohmmeter.  
5. For 15 °C Rise.

Specification

Part No.	Inductance <sup>1</sup> (nH)	Percent Tolerance	Q <sup>2</sup> Min	S.R.F. <sup>3</sup>	RDC <sup>4</sup>	IDC <sup>5</sup>
				Min (MHZ)	Max (OHM)	Max (MA)
SWI 1008 CT 3N3 □□□	3.3 @ 100 MHZ	B, S	50 @ 1000 MHZ	6000	0.06	1000
SWI 1008 CT 6N8 □□□	6.8 @ 100 MHZ	B, J, K	50 @ 1000 MHZ	5500	0.06	1000
SWI 1008 CT 8N2 □□□	8.2 @ 100 MHZ	B, J, K	50 @ 1000 MHZ	5500	0.06	1000
SWI 1008 CT 10N □□□	10 @ 100 MHZ	K, J, G	50 @ 1000 MHZ	4300	0.08	1000
SWI 1008 CT 12N □□□	12 @ 100 MHZ	K, J, G	60 @ 500 MHZ	3600	0.08	1000
SWI 1008 CT 15N □□□	15 @ 100 MHZ	K, J, G	60 @ 500 MHZ	2700	0.08	1000
SWI 1008 CT 18N □□□	18 @ 100 MHZ	K, J, G	60 @ 350 MHZ	2700	0.10	1000
SWI 1008 CT 22N □□□	22 @ 100 MHZ	K, J, G	60 @ 350 MHZ	2500	0.10	1000
SWI 1008 CT 27N □□□	27 @ 100 MHZ	K, J, G	60 @ 350 MHZ	1800	0.10	1000
SWI 1008 CT 33N □□□	33 @ 100 MHZ	K, J, G	60 @ 350 MHZ	1700	0.10	1000
SWI 1008 CT 39N □□□	39 @ 100 MHZ	K, J, G	60 @ 350 MHZ	1500	0.10	1000
SWI 1008 CT 47N □□□	47 @ 100 MHZ	K, J, G	60 @ 350 MHZ	1500	0.10	1000
SWI 1008 CT 56N □□□	56 @ 100 MHZ	K, J, G	60 @ 350 MHZ	1350	0.12	1000
SWI 1008 CT 68N □□□	68 @ 100 MHZ	K, J, G	60 @ 350 MHZ	1300	0.15	1000
SWI 1008 CT 82N □□□	82 @ 100 MHZ	K, J, G	60 @ 350 MHZ	1100	0.18	1000
SWI 1008 CT R10 □□□	100 @ 100 MHZ	K, J, G	60 @ 350 MHZ	1100	0.18	1000
SWI 1008 CT R12 □□□	120 @ 25 MHZ	K, J, G	45 @ 100 MHZ	950	0.20	500
SWI 1008 CT R15 □□□	150 @ 25 MHZ	K, J, G	45 @ 100 MHZ	880	0.22	500
SWI 1008 CT R18 □□□	180 @ 25 MHZ	K, J, G	45 @ 100 MHZ	800	0.33	500
SWI 1008 CT R22 □□□	220 @ 25 MHZ	K, J, G	45 @ 100 MHZ	730	0.45	500
SWI 1008 CT R27 □□□	270 @ 25 MHZ	K, J, G	45 @ 100 MHZ	650	0.75	500
SWI 1008 CT R33 □□□	330 @ 25 MHZ	K, J, G	45 @ 100 MHZ	570	0.90	500
SWI 1008 CT R39 □□□	390 @ 25 MHZ	K, J, G	45 @ 100 MHZ	530	1.06	400
SWI 1008 CT R47 □□□	470 @ 25 MHZ	K, J, G	45 @ 100 MHZ	480	1.17	400
SWI 1008 CT R56 □□□	560 @ 25 MHZ	K, J, G	45 @ 100 MHZ	430	1.50	300
SWI 1008 CT R68 □□□	680 @ 25 MHZ	K, J, G	45 @ 100 MHZ	380	2.06	200
SWI 1008 CT R75 □□□	750 @ 25 MHZ	K, J, G	45 @ 100 MHZ	360	2.20	150
SWI 1008 CT R82 □□□	820 @ 25 MHZ	K, J, G	45 @ 100 MHZ	350	2.30	150
SWI 1008 CT R91 □□□	910 @ 25 MHZ	K, J, G	45 @ 100 MHZ	330	3.18	90
SWI 1008 CT 1R0 □□□	1000 @ 25 MHZ	K, J, G	35 @ 50 MHZ	310	3.30	90

1. Inductance is measured in HP-4287A RF LCR meter with HP-16193 fixture.

2. Q is measured in HP-4287A RF LCR meter with HP-16193 fixture.

3. SRF is measured in HP-8753E RF network analyzer with HP-16193 fixture.

4. RDC is measured in HP-4338B milliohmmeter.

5. For 15 °C Rise.

Specification

Part No.	Inductance <sup>1</sup> (uH)	Percent Tolerance	Q <sup>2</sup> Min	S.R.F. <sup>3</sup> Min (MHZ)	RDC <sup>4</sup> Max (OHM)	IDC <sup>5</sup> Max (MA)
SWI 1008 FT 1R2 □□□	1.2 @ 7.96 MHZ	K, J, G	20 @ 7.96 MHZ	280	1.30	230
SWI 1008 FT 1R5 □□□	1.5 @ 7.96 MHZ	K, J, G	20 @ 7.96 MHZ	250	1.65	220
SWI 1008 FT 1R8 □□□	1.8 @ 7.96 MHZ	K, J, G	20 @ 7.96 MHZ	200	2.20	210
SWI 1008 FT 2R2 □□□	2.2 @ 7.96 MHZ	K, J, G	20 @ 7.96 MHZ	160	2.35	200
SWI 1008 FT 2R7 □□□	2.7 @ 7.96 MHZ	K, J, G	20 @ 7.96 MHZ	130	2.60	195
SWI 1008 FT 3R3 □□□	3.3 @ 7.96 MHZ	K, J, G	20 @ 7.96 MHZ	80	2.85	185
SWI 1008 FT 3R9 □□□	3.9 @ 7.96 MHZ	K, J, G	20 @ 7.96 MHZ	50	4.00	180
SWI 1008 FT 4R7 □□□	4.7 @ 7.96 MHZ	K, J, G	20 @ 7.96 MHZ	45	4.30	175
SWI 1008 FT 5R6 □□□	5.6 @ 7.96 MHZ	K, J, G	20 @ 7.96 MHZ	42	2.60	170
SWI 1008 FT 6R8 □□□	6.8 @ 7.96 MHZ	K, J, G	20 @ 7.96 MHZ	39	2.80	165
SWI 1008 FT 8R2 □□□	8.2 @ 7.96 MHZ	K, J, G	20 @ 7.96 MHZ	36	3.05	160
SWI 1008 FT 100 □□□	10 @ 2.52 MHZ	K, J, G	15 @ 2.52 MHZ	33	3.50	150
SWI 1008 FT 120 □□□	12 @ 2.52 MHZ	K, J, G	15 @ 2.52 MHZ	30	3.60	140
SWI 1008 FT 150 □□□	15 @ 2.52 MHZ	K, J, G	15 @ 2.52 MHZ	26	4.00	130
SWI 1008 FT 180 □□□	18 @ 2.52 MHZ	K, J, G	15 @ 2.52 MHZ	24	4.50	120
SWI 1008 FT 220 □□□	22 @ 2.52 MHZ	K, J, G	15 @ 2.52 MHZ	22	4.80	110
SWI 1008 FT 270 □□□	27 @ 2.52 MHZ	K, J, G	15 @ 2.52 MHZ	21	5.30	95
SWI 1008 FT 330 □□□	33 @ 2.52 MHZ	K, J, G	15 @ 2.52 MHZ	20	6.10	85
SWI 1008 FT 390 □□□	39 @ 2.52 MHZ	K, J, G	15 @ 2.52 MHZ	18	8.30	60
SWI 1008 FT 470 □□□	47 @ 2.52 MHZ	K, J, G	15 @ 2.52 MHZ	17	12.00	45

1. Inductance is measured in HP-4285A Precision LCR meter/  
HP-4287A RF LCR meter with HP-16193 fixture.

2. Q is measured in HP-4285A Precision LCR meter,  
HP-4287A RF LCR meter with HP-16193 fixture.

3. SRF is measured in HP-8753E RF network analyzer  
with HP-16193 fixture.

4. RDC is measured in HP-4338B millohmeter.

5. For 15 °C Rise.

Specification

Part No.	Inductance <sup>1</sup> (uH)	Percent Tolerance	Q <sup>2</sup> Min	S.R.F. <sup>3</sup> Min (MHZ)	RDC <sup>4</sup> Max (OHM)	IDC <sup>5</sup> Max (MA)
SWI 1008 PT 1R0 □□□	1.0 @ 100 KHZ	M	35 @ 1.00 MHZ	344	0.05	1000
SWI 1008 PT 1R5 □□□	1.5 @ 100 KHZ	M	35 @ 1.00 MHZ	260	0.06	800
SWI 1008 PT 1R8 □□□	1.8 @ 100 KHZ	M	35 @ 1.00 MHZ	225	0.09	680
SWI 1008 PT 2R7 □□□	2.7 @ 100 KHZ	M	38 @ 1.00 MHZ	185	0.14	650
SWI 1008 PT 3R9 □□□	3.9 @ 100 KHZ	M	38 @ 1.00 MHZ	175	0.26	650
SWI 1008 PT 4R7 □□□	4.7 @ 100 KHZ	M	38 @ 1.00 MHZ	160	0.35	500
SWI 1008 PT 5R6 □□□	5.6 @ 100 KHZ	M	38 @ 1.00 MHZ	150	0.40	450
SWI 1008 PT 6R8 □□□	6.8 @ 100 KHZ	M	38 @ 1.00 MHZ	120	0.60	400
SWI 1008 PT 100 □□□	10 @ 100 KHZ	M	38 @ 1.00 MHZ	100	0.95	250
SWI 1008 PT 150 □□□	15 @ 100 KHZ	M	38 @ 1.00 MHZ	35	1.15	220
SWI 1008 PT 220 □□□	22 @ 100 KHZ	M	40 @ 1.00 MHZ	26	1.40	180
SWI 1008 PT 330 □□□	33 @ 100 KHZ	M	45 @ 1.00 MHZ	20	1.60	150
SWI 1008 PT 390 □□□	39 @ 100 KHZ	M	45 @ 1.00 MHZ	14	1.85	130
SWI 1008 PT 470 □□□	47 @ 100 KHZ	M	45 @ 1.00 MHZ	14	2.50	110
SWI 1008 PT 680 □□□	68 @ 100 KHZ	M	45 @ 1.00 MHZ	12	3.80	100
SWI 1008 PT 820 □□□	82 @ 100 KHZ	M	45 @ 1.00 MHZ	9.0	4.20	100
SWI 1008 PT 101 □□□	100 @ 100 KHZ	M	45 @ 1.00 MHZ	7.0	5.80	80
SWI 1008 PT 121 □□□	120 @ 100 KHZ	M	45 @ 1.00 MHZ	6.0	6.20	60
SWI 1008 PT 151 □□□	150 @ 100 KHZ	M	40 @ 1.00 MHZ	5.6	7.50	50
SWI 1008 PT 221 □□□	220 @ 100 KHZ	M	40 @ 1.00 MHZ	4.0	10.00	50
SWI 1008 PT 331 □□□	330 @ 100 KHZ	M	40 @ 1.00 MHZ	3.8	11.50	50
SWI 1008 PT 471 □□□	470 @ 100 KHZ	M	35 @ 1.00 MHZ	2.0	16.50	50
SWI 1008 PT 561 □□□	560 @ 100 KHZ	M	35 @ 1.00 MHZ	2.0	18.00	30
SWI 1008 PT 681 □□□	680 @ 100 KHZ	M	30 @ 1.00 MHZ	1.8	24.00	30
SWI 1008 PT 821 □□□	820 @ 100 KHZ	M	30 @ 1.00 MHZ	1.5	26.00	30
SWI 1008 PT 102 □□□	1000 @ 100 KHZ	M	30 @ 1.00 MHZ	1.3	30.00	30

1. Inductance is measured in HP-4285A Precision LCR meter/  
HP-4286A RF LCR meter with HP-16193 fixture.  
2. Q is measured in HP-4285A Precision LCR meter,  
HP-4286A RF LCR meter with HP-16193 fixture.

3. SRF is measured in HP-8753E RF network analyzer  
with HP-16193 fixture.  
4. RDC is measured in HP-4338B milliohmmeter.  
5. For 15 °C Rise.

Specification

Part No.	Inductance <sup>1</sup> (nH)	Percent Tolerance	Q <sup>2</sup> Min	S.R.F. <sup>3</sup>	RDC <sup>4</sup>	IDC <sup>5</sup>
				Min (MHZ)	Max (OHM)	Max (MA)
SWI 1210 CT 4N7 □□□	4.7 @ 100 MHZ	B, S	50 @ 1000 MHZ	6000	0.06	1000
SWI 1210 CT 5N6 □□□	5.6 @ 100 MHZ	B, J, K	50 @ 1000 MHZ	5500	0.08	1000
SWI 1210 CT 10N □□□	10 @ 100 MHZ	K, J, G	60 @ 500 MHZ	4000	0.06	1000
SWI 1210 CT 12N □□□	12 @ 100 MHZ	K, J, G	60 @ 500 MHZ	3400	0.06	1000
SWI 1210 CT 15N □□□	15 @ 100 MHZ	K, J, G	60 @ 500 MHZ	3200	0.06	1000
SWI 1210 CT 18N □□□	18 @ 100 MHZ	K, J, G	60 @ 300 MHZ	2800	0.06	1000
SWI 1210 CT 22N □□□	22 @ 100 MHZ	K, J, G	60 @ 300 MHZ	2300	0.08	1000
SWI 1210 CT 27N □□□	27 @ 100 MHZ	K, J, G	60 @ 300 MHZ	2000	0.08	1000
SWI 1210 CT 33N □□□	33 @ 100 MHZ	K, J, G	60 @ 300 MHZ	1800	0.08	1000
SWI 1210 CT 39N □□□	39 @ 100 MHZ	K, J, G	60 @ 300 MHZ	1800	0.08	1000
SWI 1210 CT 47N □□□	47 @ 100 MHZ	K, J, G	60 @ 300 MHZ	1600	0.08	1000
SWI 1210 CT 56N □□□	56 @ 100 MHZ	K, J, G	60 @ 300 MHZ	1500	0.10	1000
SWI 1210 CT 68N □□□	68 @ 100 MHZ	K, J, G	60 @ 300 MHZ	1300	0.10	1000
SWI 1210 CT 82N □□□	82 @ 100 MHZ	K, J, G	60 @ 300 MHZ	1200	0.10	1000
SWI 1210 CT R10 □□□	100 @ 100 MHZ	K, J, G	60 @ 300 MHZ	1100	0.10	1000
SWI 1210 CT R12 □□□	120 @ 50 MHZ	K, J, G	60 @ 300 MHZ	900	0.12	800
SWI 1210 CT R15 □□□	150 @ 50 MHZ	K, J, G	60 @ 300 MHZ	800	0.18	800
SWI 1210 CT R18 □□□	180 @ 50 MHZ	K, J, G	60 @ 300 MHZ	760	0.21	800
SWI 1210 CT R22 □□□	220 @ 50 MHZ	K, J, G	60 @ 300 MHZ	660	0.27	800
SWI 1210 CT R27 □□□	270 @ 50 MHZ	K, J, G	50 @ 300 MHZ	600	0.33	700
SWI 1210 CT R33 □□□	330 @ 50 MHZ	K, J, G	50 @ 100 MHZ	550	0.37	650
SWI 1210 CT R39 □□□	390 @ 50 MHZ	K, J, G	50 @ 100 MHZ	500	0.63	600
SWI 1210 CT R47 □□□	470 @ 50 MHZ	K, J, G	50 @ 100 MHZ	450	0.69	550
SWI 1210 CT R56 □□□	560 @ 50 MHZ	K, J, G	50 @ 100 MHZ	400	0.90	450
SWI 1210 CT R68 □□□	680 @ 25 MHZ	K, J, G	50 @ 100 MHZ	380	1.05	400
SWI 1210 CT R82 □□□	820 @ 25 MHZ	K, J, G	50 @ 100 MHZ	350	1.45	350
SWI 1210 CT 1R0 □□□	1000 @ 25 MHZ	K, J, G	45 @ 100 MHZ	300	1.90	280
SWI 1210 CT 1R2 □□□	1200 @ 7.96 MHZ	K, J, G	45 @ 50 MHZ	300	2.20	250
SWI 1210 CT 1R5 □□□	1500 @ 7.96 MHZ	K, J, G	45 @ 50 MHZ	250	2.43	220
SWI 1210 CT 1R8 □□□	1800 @ 7.96 MHZ	K, J, G	45 @ 50 MHZ	200	3.36	180
SWI 1210 CT 2R2 □□□	2200 @ 7.96 MHZ	K, J, G	40 @ 50 MHZ	200	3.50	150

1. Inductance is measured in HP-4287A RF LCR meter with HP-16193 fixture.

2. Q is measured in HP-4287A RF LCR meter with HP-16193 fixture.

3. SRF is measured in HP-8753E RF network analyzer with HP-16193 fixture.

4. RDC is measured in HP-4338B milliohmeter.

5. For 15 °C Rise.

Specification

Part No.	Inductance <sup>1</sup> (uH)	Percent Tolerance	Q <sup>2</sup> Min	S.R.F. <sup>3</sup> Min (MHZ)	RDC <sup>4</sup> Max (OHM)	IDC <sup>5</sup> Max (MA)
SWI 1210 FT 1R2 □□□	1.2 @ 7.96 MHZ	K, J, G	30 @ 7.96 MHZ	100	0.70	390
SWI 1210 FT 1R5 □□□	1.5 @ 7.96 MHZ	K, J, G	30 @ 7.96 MHZ	85	0.75	370
SWI 1210 FT 1R8 □□□	1.8 @ 7.96 MHZ	K, J, G	30 @ 7.96 MHZ	80	0.80	350
SWI 1210 FT 2R2 □□□	2.2 @ 7.96 MHZ	K, J, G	30 @ 7.96 MHZ	75	0.90	320
SWI 1210 FT 2R7 □□□	2.7 @ 7.96 MHZ	K, J, G	30 @ 7.96 MHZ	70	1.10	290
SWI 1210 FT 3R3 □□□	3.3 @ 7.96 MHZ	K, J, G	30 @ 7.96 MHZ	60	1.40	260
SWI 1210 FT 3R9 □□□	3.9 @ 7.96 MHZ	K, J, G	30 @ 7.96 MHZ	55	1.70	250
SWI 1210 FT 4R7 □□□	4.7 @ 7.96 MHZ	K, J, G	30 @ 7.96 MHZ	50	2.30	220
SWI 1210 FT 5R6 □□□	5.6 @ 7.96 MHZ	K, J, G	20 @ 7.96 MHZ	47	1.60	200
SWI 1210 FT 6R8 □□□	6.8 @ 7.96 MHZ	K, J, G	20 @ 7.96 MHZ	43	2.20	180
SWI 1210 FT 8R2 □□□	8.2 @ 7.96 MHZ	K, J, G	20 @ 7.96 MHZ	40	2.40	170
SWI 1210 FT 100 □□□	10 @ 2.52 MHZ	K, J, G	15 @ 2.52 MHZ	36	3.28	150
SWI 1210 FT 120 □□□	12 @ 2.52 MHZ	K, J, G	15 @ 2.52 MHZ	33	3.40	140
SWI 1210 FT 150 □□□	15 @ 2.52 MHZ	K, J, G	15 @ 2.52 MHZ	30	3.90	125
SWI 1210 FT 180 □□□	18 @ 2.52 MHZ	K, J, G	15 @ 2.52 MHZ	27	4.20	110
SWI 1210 FT 220 □□□	22 @ 2.52 MHZ	K, J, G	15 @ 2.52 MHZ	25	6.00	90
SWI 1210 FT 270 □□□	27 @ 2.52 MHZ	K, J, G	15 @ 2.52 MHZ	20	6.80	80
SWI 1210 FT 330 □□□	33 @ 2.52 MHZ	K, J, G	15 @ 2.52 MHZ	17	7.50	70
SWI 1210 FT 390 □□□	39 @ 2.52 MHZ	K, J, G	15 @ 2.52 MHZ	16	8.00	65
SWI 1210 FT 470 □□□	47 @ 2.52 MHZ	K, J, G	15 @ 2.52 MHZ	15	8.50	60

1. Inductance is measured in HP-4285A Precision LCR meter/  
HP-4287A RF LCR meter with HP-16193 fixture.

2. Q is measured in HP-4285A Precision LCR meter,  
HP-4287A RF LCR meter with HP-16193 fixture.

3. SRF is measured in HP-8753E RF network analyzer  
with HP-16193 fixture.

4. RDC is measured in HP-4338B millohmmeter.

5. For 15 °C Rise.

Specification

Part No.	Inductance <sup>1</sup> (uH)	Percent Tolerance	Q <sup>2</sup> Min	S.R.F. <sup>3</sup> Min (MHZ)	RDC <sup>4</sup> Max (OHM)	IDC <sup>5</sup> Max (MA)
SWI 1812 FT 120 □□□	12 @ 2.52 MHZ	K, J	40 @ 2.52 MHZ	55	2.00	310
SWI 1812 FT 150 □□□	15 @ 2.52 MHZ	K, J	40 @ 2.52 MHZ	45	2.50	290
SWI 1812 FT 180 □□□	18 @ 2.52 MHZ	K, J	45 @ 2.52 MHZ	36	2.80	270
SWI 1812 FT 220 □□□	22 @ 2.52 MHZ	K, J	45 @ 2.52 MHZ	32	3.20	260
SWI 1812 FT 270 □□□	27 @ 2.52 MHZ	K, J	45 @ 2.52 MHZ	27	3.60	240
SWI 1812 FT 330 □□□	33 @ 2.52 MHZ	K, J	45 @ 2.52 MHZ	23	4.00	230
SWI 1812 FT 390 □□□	39 @ 2.52 MHZ	K, J	45 @ 2.52 MHZ	18	4.50	210
SWI 1812 FT 470 □□□	47 @ 2.52 MHZ	K, J	40 @ 2.52 MHZ	16	5.00	200
SWI 1812 FT 560 □□□	56 @ 2.52 MHZ	K, J	40 @ 2.52 MHZ	13	5.50	190
SWI 1812 FT 680 □□□	68 @ 2.52 MHZ	K, J	40 @ 2.52 MHZ	10	6.00	180
SWI 1812 FT 820 □□□	82 @ 2.52 MHZ	K, J	40 @ 2.52 MHZ	9.00	7.00	170
SWI 1812 FT 101 □□□	100 @ 0.796 MHZ	K, J	40 @ 0.796 MHZ	8.50	8.00	150
SWI 1812 FT 121 □□□	120 @ 0.796 MHZ	K, J	35 @ 0.796 MHZ	8.50	11.50	135
SWI 1812 FT 151 □□□	150 @ 0.796 MHZ	K, J	35 @ 0.796 MHZ	8.50	13.00	125
SWI 1812 FT 181 □□□	180 @ 0.796 MHZ	K, J	35 @ 0.796 MHZ	8.00	14.20	120
SWI 1812 FT 221 □□□	220 @ 0.796 MHZ	K, J	35 @ 0.796 MHZ	6.00	16.20	115
SWI 1812 FT 271 □□□	270 @ 0.796 MHZ	K, J	35 @ 0.796 MHZ	5.00	20.50	105
SWI 1812 FT 331 □□□	330 @ 0.796 MHZ	K, J	35 @ 0.796 MHZ	4.50	22.50	100
SWI 1812 FT 391 □□□	390 @ 0.796 MHZ	K, J	35 @ 0.796 MHZ	3.50	24.50	90
SWI 1812 FT 471 □□□	470 @ 0.796 MHZ	K, J	35 @ 0.796 MHZ	3.00	26.50	85
SWI 1812 FT 561 □□□	560 @ 0.796 MHZ	K, J	30 @ 0.796 MHZ	2.00	28.50	75
SWI 1812 FT 681 □□□	680 @ 0.796 MHZ	K, J	30 @ 0.796 MHZ	1.80	38.00	60
SWI 1812 FT 821 □□□	820 @ 0.796 MHZ	K, J	30 @ 0.796 MHZ	1.60	41.00	55
SWI 1812 FT 102 □□□	1000 @ 0.796 MHZ	K, J	30 @ 0.796 MHZ	1.50	44.00	50

1. Inductance is measured in HP-4285A Precision LCR meter with CoilCraft's SMD A fixture.

2. Q is measured in HP-4285A Precision LCR meter, with CoilCraft's SMD A fixture.

3. SRF is measured in HP-8753E RF network analyzer

4. RDC is measured in HP-4338B milliohmmeter.

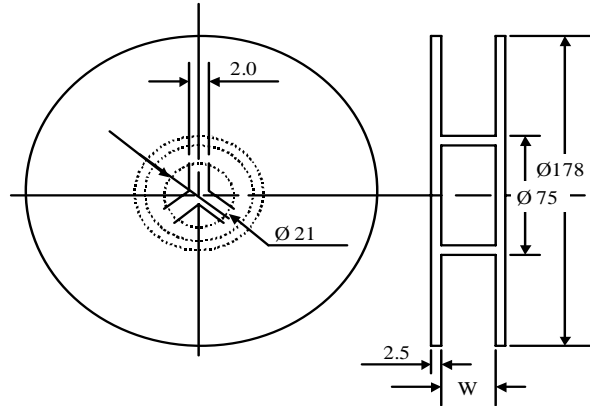
5. For 15 °C Rise.

# PACKING INFORMATION

## Packing Quantity

TYPE	PCS/REEL
SPI/SWI 0402	10,000
SPI/SWI 0603	3,000
SWI 0805	2,000
SWI 1008	2,000
SWI 1210	2,000
SCI 1210	1,000
SWI 1812	750
SCI 1812	500

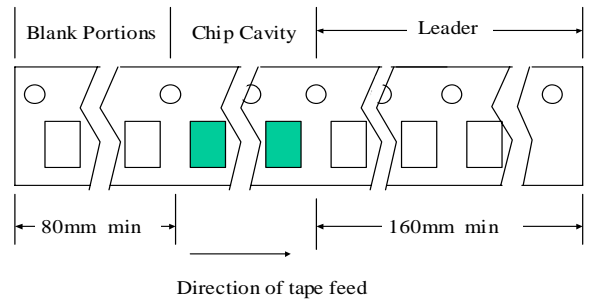
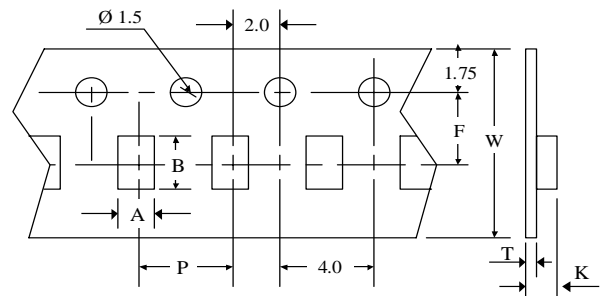
## Reel Dimensions



## Dimensions (unit: m/m)

TYPE	A	B	P	F	K	T	W
SPI 0402	0.70	1.20	2.00	3.50	0.50	0.70	8.00
SPI 0603	1.00	1.80	4.00	3.50	1.00	0.20	8.00
SWI 0402	0.70	1.20	4.00	3.50	0.50	0.70	8.00
SWI 0603	1.25	1.80	4.00	3.50	1.10	0.20	8.00
SWI 0805	1.42	2.26	4.00	3.50	1.30	0.20	8.00
SWI 1008	2.23	2.73	4.00	3.50	1.80	0.20	8.00
SWI 1210	2.69	3.56	4.00	3.50	2.40	0.20	8.00
SWI 1812	3.60	5.00	8.00	5.50	3.60	0.30	12.00
SCI 1210	2.80	3.60	4.00	3.50	2.40	0.20	8.00
SCI 1812	3.60	5.00	8.00	5.50	3.60	0.30	12.00

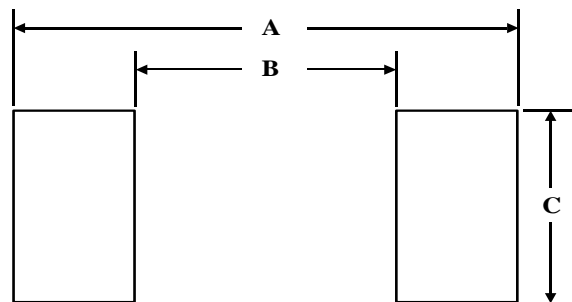
## Tape Dimension



## Dimensions (unit: m/m)

TYPE	A	B	C
SPI 0402	1.60	0.50	0.05
SPI 0603	2.10	1.00	0.80
SWI 0402	1.20	0.45	0.65
SWI 0603	1.90	0.65	1.00
SWI 0805	2.60	0.75	1.20
SWI 1008	3.00	1.20	2.20
SWI 1210	4.00	1.70	2.82
SWI 1812	5.30	3.00	4.00
SCI 1210	4.00	2.00	2.00
SCI 1812	6.00	3.00	2.80

## Recommended Pattern



Remark: 1) Blank length 200 mm minimum for loading  
2) Blank length 160 mm minimum for unloading

**1. Scope**

This specification applies to fixed inductors of the following types used in electronic equipment :

- Ceramic Type : For lower inductance with high Q factor at high frequency and stable circuit requirement.
- Ferrite Type : For higher inductance at lower frequency circuit requirement and also for all types of chip beads.

**2. Construction**

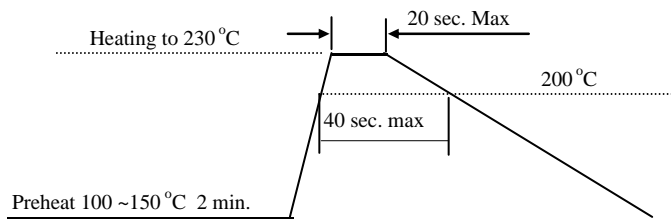
- Configuration & Dimension : Please refer to the attached figures and tables.
- Terminals : SPI series shall consist of copper followed by solder plating.  
SWI series shall consist of MoMn alloy or PdAg alloy followed by Nickel, then Au or solder plating.  
SMI/FBM series shall consist of Ag followed by Nickel, then solder plating.  
SCI/SAI series shall consist of copper wire followed by solder plating.

**3. Operating Temperature Range**

Operating Temperature Range is the scope of ambient temperature at which the inductor can be operated continuously at rated current.

- Temp. Range : - 40 °C to + 85 °C

**4. Recommended Soldering Conditions**



**5 Characteristics**

Standard Atmospheric Conditions

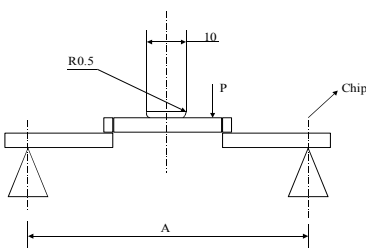
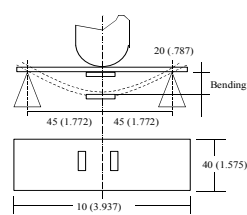
Unless otherwise specified, the standard range of atmospheric conditions for making measurements and tests are as follows :

- Ambient Temperature : 25 °C ( 20 °C ) ± 2 °C
- Relative Humidity : 60% to 70%
- Air Pressure : 86 Kpa to 106 Kpa

## RELIABILITY SPECIFICATION

	ITEM	CONDITION	SPECIFICATION
	Inductance/ Impedance and Tolerance	Measuring Frequency : As shown in Product Table	Within Specified Tolerance
	Quality Factor	Measuring Temperature : + 25 °C	
<b>Electrical Characteristics</b>	Insulation Resistance	Measured at 100V DC between component terminals and center of case.	1000 megaohms minimum
	Dielectric Withstanding Voltage	Measured at 500V AC between component terminals and center of case for a maximum of 1 minute.	No damage occurs when the test voltage is applied.
	Temperature Coefficient of Inductance (TCL)	Over - 40 °C to + 85°C at frequency specified in Product Table.	+ 25 to + 500 ppm / °C  TCL = $\frac{L1 - L2}{L1(T1-T2)} \times 10^6$ (ppm / °C)
	Component Adhesion (Push Test)	Components shall be reflow soldered onto a P. C. Board ( 230 °C ± 5°C for 20 seconds ). Then a dynamometer force gauge shall be applied to any side of the component.	Components must withstand a minimum force of 1 Kg for <b>Pt/Ag termination and 2 Kg</b> for Mo/Mn termination without any failure of the termination to component attachment.
<b>Machanical Characteristics</b>	Drop Test	Components shall be dropped two times on the concrete floor or the vinyl tile from 1M naturally.	Change In Inductance/Impedance: SPI/SWI: Within ± 5% or ± 0.3nH Others: Within ± 20%
	Thermal Shock Test	Each cycle shall consist of 30 minutes at -25 °C followed by 30 minutes at +85 °C with a 20-second maximum transition time between temperature extremes. Test duration is 10 cycles.	Change In Q: SPI/SWI: Within ± 10% Others: Within ± 30%  Change In Appearance: Without distinct damage

## RELIABILITY SPECIFICATION

	ITEM	CONDITION	SPECIFICATION
<b>Endurance Characteristics</b>	Solderability	Dip pads in flux and then in a solder pot (63Sn / 37Pb) at 230 °C ± 5°C for 5 seconds.	A minimum of 95% of the metalized area must be covered with solder.
	Resistance to Soldering Heat	Dip components into flux and then into a solder pot containing 63Sn / 37Pb at 260 °C ± 5 °C for 5 ± 1 seconds.	Change In L / Z (Inductance / Impedance):  SPI / SWI Series: Within ± 5% or ± 0.3nH Other Series: Within ± 20%
	Vibration (Random)	Components shall be randomly vibrated at amplitude of 1.5mm and frequency of 10 - 55 Hz: 0.04 G / Hz for a minimum of 15 minutes per axis for each of the three axes.	
	Cold Temperature Storage	Components shall be stored at temperature of -40 °C ± 2 °C for 1000 ± 48 hours. Then components shall be subjected to standard atmospheric conditions for 1 hour. After that, measurement shall be made.	Change In Q: SPI/SWI: Within ± 10% Others: Within ± 30%
	High Temperature Storage	Components shall be stored at temperature of +85 °C ± 2 °C for 1000 ± 48 hours. Then components shall be subjected to standard atmospheric conditions for 1 hour. After that, measurement shall be made.	Change In Appearance: Without distinct damage
	Moisture Resistance	Components shall be stored in the chamber at 45 °C at 90 - 95 R. H. for 240 hours. Then components are to be tested after 2 hours at room temperature.	Components shall not have a shorted or open winding.
	High Temperature with Loaded	Components shall be stored in the chamber at +85 °C for 1000 hours with rated current applied. Components shall be tested at the beginning of test at 500 hours and 1000 hours. Then components are to be tested after 1 hour at room temperature.	
	Bending Strength		Components shall not be damaged by the forces conditions applied on the test specified as follows: Chip Size: 0402: >1Kg 0603/0805: >3Kg 1206/1210: >6Kg 1816/1812: >8Kg
Flexure Strength		No Mechanical Damages.	