

Construction

- Building-block system
- MKP technology (dry, self-healing)
Dielectric: polypropylene, metallized
- Metal case with synthetic resin terminals
- For central screw fixing

Features

- Compact dimensions
- Variable current rating and capacitance through building-block system
- High attenuation
- Simple fitting
- High contact reliability through central screw fixing


Applications

Broadband interference suppression for AC/DC supply lines, e.g. in

- shielded rooms
- telephone exchanges, base stations
- electrical machines and systems
- power supplies

Terminals

- Threaded stud
- Axial leads
- Soldering tag
- Tab connector

Marking

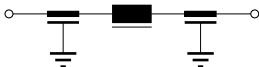
Manufacturer, ordering code, rated capacitance, rated voltage, rated current, test voltage, climatic category, circuit diagram, date of manufacture (MM.YY), approvals

Standards

Feedthrough filters comply with EN 133200

Safety information

Due to the high capacitance ratings protective measures (e.g. protective earthing) in accordance with equipment/system regulations are required.

Circuit diagram


SSB1274-B

Feedthrough filters ∅ 55 mm
Characteristics and ordering codes

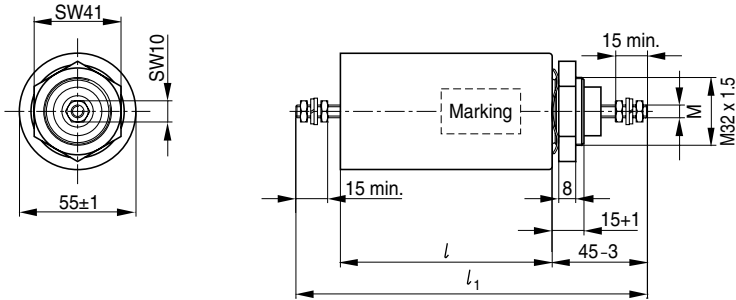
| I _R A | C _R μF | V _R | | V _{test} VDC | Ter- minal | Dimensions (mm) | | | Ordering code |
|---------------------|----------------------|----------------|-----|--------------------------|---------------|-----------------|-----------------|------------------|-----------------|
| | | VAC | VDC | | | ∅ | l ₊₁ | l ₁₋₁ | |
| 63 | 2 × 0.5 | 250 | 600 | 3000 | M6 | 55 | 100 | 166 | B85321A2105A630 |
| | 2 × 1.0 | 250 | 600 | 2500 | M6 | 55 | 100 | 166 | B85321A2205A630 |
| | 2 × 2.0 | 250 | 600 | 2500 | M6 | 55 | 100 | 166 | B85321A2405A630 |
| | 2 × 4.7 | 250 | 600 | 1650 | M6 | 55 | 100 | 166 | B85321A2945A630 |
| 100 | 2 × 0.5 | 250 | 600 | 3000 | M8 | 55 | 100 | 180 | B85321A2105A101 |
| | 2 × 1.0 | 250 | 600 | 2500 | M8 | 55 | 100 | 180 | B85321A2205A101 |
| | 2 × 2.0 | 250 | 600 | 2500 | M8 | 55 | 100 | 180 | B85321A2405A101 |
| | 2 × 4.7 | 250 | 600 | 1650 | M8 | 55 | 100 | 180 | B85321A2945A101 |
| 200 | 2 × 0.5 | 250 | 600 | 3000 | M10 | 55 | 100 | 185 | B85321A2105A201 |
| | 2 × 1.0 | 250 | 600 | 2500 | M10 | 55 | 100 | 185 | B85321A2205A201 |
| | 2 × 2.0 | 250 | 600 | 2500 | M10 | 55 | 100 | 185 | B85321A2405A201 |
| | 2 × 4.7 | 250 | 600 | 1650 | M10 | 55 | 100 | 185 | B85321A2945A201 |
| 300 | 2 × 0.5 | 250 | 600 | 3000 | M12 | 55 | 100 | 195 | B85321A2105A301 |
| | 2 × 1.0 | 250 | 600 | 2500 | M12 | 55 | 100 | 195 | B85321A2205A301 |
| | 2 × 2.0 | 250 | 600 | 2500 | M12 | 55 | 100 | 195 | B85321A2405A301 |
| | 2 × 4.7 | 250 | 600 | 1650 | M12 | 55 | 100 | 195 | B85321A2945A301 |
| 400 | 2 × 0.5 | 250 | 600 | 3000 | M16 | 55 | 130 | 245 | B85321A2105A401 |
| | 2 × 1.0 | 250 | 600 | 2500 | M16 | 55 | 130 | 245 | B85321A2205A401 |
| | 2 × 2.0 | 250 | 600 | 2500 | M16 | 55 | 130 | 245 | B85321A2405A401 |
| | 2 × 4.7 | 250 | 600 | 1650 | M16 | 55 | 130 | 245 | B85321A2945A401 |
| 500 | 2 × 0.5 | 250 | 600 | 3000 | M18 | 55 | 130 | 250 | B85321A2105A501 |
| | 2 × 1.0 | 250 | 600 | 2500 | M18 | 55 | 130 | 250 | B85321A2205A501 |
| | 2 × 2.0 | 250 | 600 | 2500 | M18 | 55 | 130 | 250 | B85321A2405A501 |
| | 2 × 4.7 | 250 | 600 | 1650 | M18 | 55 | 130 | 250 | B85321A2945A501 |

Insertion loss (dB); typical values at 50 Ω

| Capacitance C _R | 10 kHz | 100 kHz | 1 MHz | 10 MHz | 100 MHz | 1 GHz |
|----------------------------|--------|---------|-------|--------|---------|-------|
| 2 × 0.5 μF | 5 | 25 | 45 | 80 | > 100 | > 100 |
| 2 × 1.0 μF | 10 | 30 | 60 | > 100 | > 100 | > 100 |
| 2 × 2.0 μF | 15 | 35 | 70 | > 100 | > 100 | > 100 |
| 2 × 4.7 μF | 25 | 40 | 90 | > 100 | > 100 | > 100 |

General technical data

Capacitance tolerance: $\pm 20\%$
 IEC climatic category: 40/085/56 ($-40\text{ }^{\circ}\text{C}/+85\text{ }^{\circ}\text{C}$, 56 days damp heat test)
 Screw cap fixing: Standard M32 \times 1.5
 Special fixing M27 \times 1.5 possible for filters up to 300 A.

Dimensional drawing


SSB1273-3

Symbols and terms

| Symbol | English | German |
|------------|-------------------|---------------------|
| I_R | Rated current | Bemessungsstrom |
| C_R | Rated capacitance | Bemessungskapazität |
| V_R | Rated voltage | Bemessungsspannung |
| V_{test} | Test voltage | Prüfspannung |

Published by EPCOS AG
Corporate Communications, P.O. Box 80 17 09, 81617 Munich, GERMANY
☎ ++49 89 636 09, FAX (0 89) 636-2 26 89

© EPCOS AG 2003. Reproduction, publication and dissemination of this brochure and the information contained therein without EPCOS' prior express consent is prohibited.

Purchase orders are subject to the General Conditions for the Supply of Products and Services of the Electrical and Electronics Industry recommended by the ZVEI (German Electrical and Electronic Manufacturers' Association), unless otherwise agreed.

This brochure replaces the previous edition.

For questions on technology, prices and delivery please contact the Sales Offices of EPCOS AG or the international Representatives.

Due to technical requirements components may contain dangerous substances. For information on the type in question please also contact one of our Sales Offices.