

Preliminary data
**Magnetic characteristics
(per set E&I)**

$$\Sigma l/A = 0.531 \text{ mm}^{-1}$$

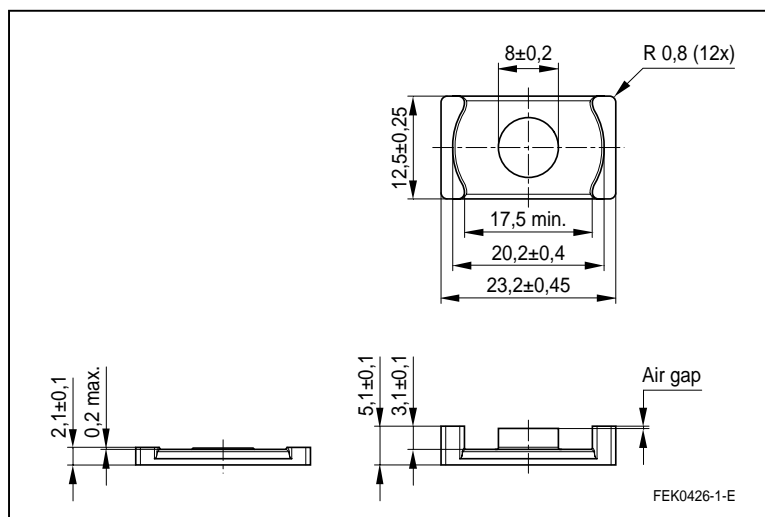
$$l_e = 26.6 \text{ mm}$$

$$A_e = 50.2 \text{ mm}^2$$

$$A_{\min} = 50 \text{ mm}^2$$

$$V_e = 1340 \text{ mm}^3$$

Approx. weight 6.4 g/set

Dimensional drawing

I-core
ER core
Type of delivery: Pieces

Packing: Standard styrofoam tray (size 200 mm x 300 mm)

Material	A_L value [nH] ¹⁾	μ_e	Air gap [mm]	$A_{L1\min}$ [nH] ²⁾	$P_{V\max}$ [W/Set] ³⁾	Ordering code
N87	3400 +/-25%	1430	-	3000	0.70 ³⁾	B66482G0000X187 (ER core) B66482P0000X187 (I core)
N97	3400 +/-25%	1430	-	3000	0.56 ³⁾	B66482G0000X197 (ER core) B66482P0000X197 (I core)
N92	2600 +/-25%	1100	-	3600	0.77 ³⁾	B66482G0000X192 (ER core) B66482P0000X192 (I core)
N49	2600 +/-25%	1100	-	1400	0.21 ⁴⁾	B66482G0000X149 (ER core) B66482P0000X149 (I core)

¹⁾ Measurement parameter: $f = 10\text{kHz}$ / $B = 0.25\text{mT}$ / 100 turns / room temperature

²⁾ Measurement parameter: $f \leq 10\text{kHz}$ / $B = 320\text{mT}$ / $T = 100^\circ\text{C}$
³⁾ Measurement parameter: $f = 100\text{kHz}$ / $B = 200\text{mT}$ / $T = 100^\circ\text{C}$
⁴⁾ Measurement parameter: $f = 500\text{kHz}$ / $B = 50\text{mT}$ / $T = 100^\circ\text{C}$