

**Power line filters for three-phase systems**
**Rated voltage 440/250 Vac, 50/60 Hz**
**Rated current 8 A to 80 A**
**Construction**

- Three-line filter
- Metal case

**Features**

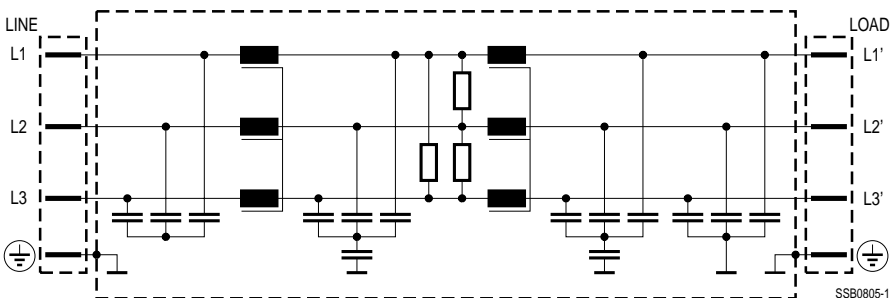
- Very high insertion loss
- Low leakage current
- Easy to install
- Degree of protection: IP 20<sup>1)</sup>
- Space-saving construction
- Construction complies with EN 133200, UL 1283, CSA 22.2 No.8 1986
- Optimized for long motor cables and operation under full load


**Applications**

- Frequency converters for motor drives, e.g.
  - lifts
  - pumps
  - traction systems
  - conveyor systems
  - air conditioning systems
- Wind farms
- Power supplies

**Terminals**

- Safe-to-touch terminal blocks

**Typical circuit diagram**


SSB0805-1

1) In accordance with EN 60529

**Technical data**

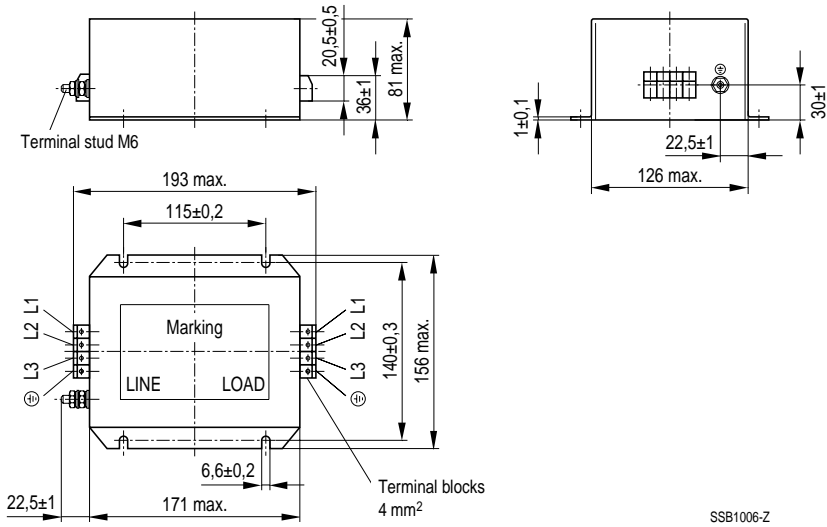
Rated voltage $V_R$	440/250 Vac, 50/60 Hz
Rated current $I_R$	Referred to 40 °C ambient temperature
Test voltage $V_P$	2121 Vdc, 2 s (line/line) 2700 Vdc, 2 s (lines/case)
Overload capability	1,5 · $I_R$ for 3 min per hour or 2,5 · $I_R$ for 30 s per hour
Leakage current $I_{leak}$	at 250 Vac, 50 Hz
Climatic category	25/100/21 (– 25 °C/+ 100 °C/21 days damp heat test) in accordance with IEC 60068-1

**Characteristics and ordering codes**

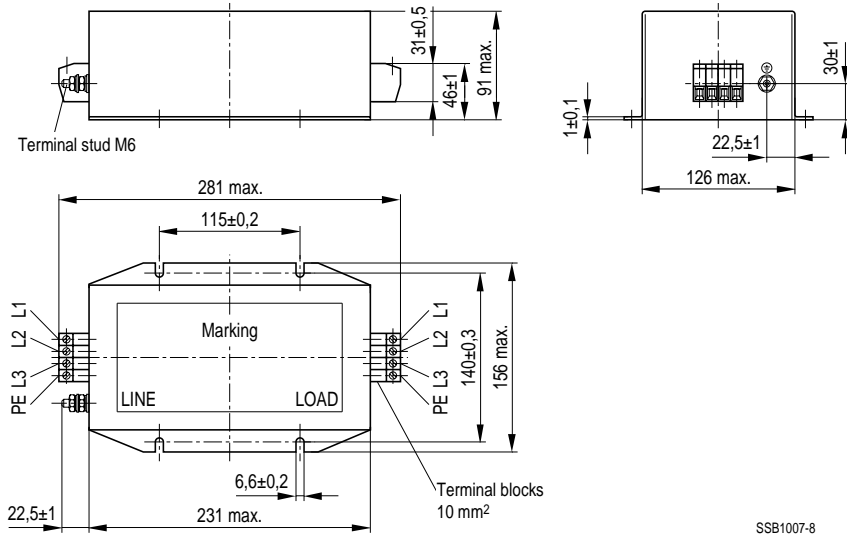
$I_R$ A	Terminal cross section mm <sup>2</sup>	$I_{leak}$ mA	$R_{typ}$ mΩ	Approx. weight kg	Ordering code
8	4	< 3,5	80	3,8	B84143-B8-R
12	4	< 3,5	40	3,8	B84143-B12-R
16	4	< 3,5	25	3,8	B84143-B16-R
25	10	< 3,5	10	5,7	B84143-B25-R
36	10	< 3,5	5	5,7	B84143-B36-R
50	10	< 6	3,5	5,7	B84143-B50-R
80	25	< 6	2	16	B84143-B80-R

Dimensional drawings

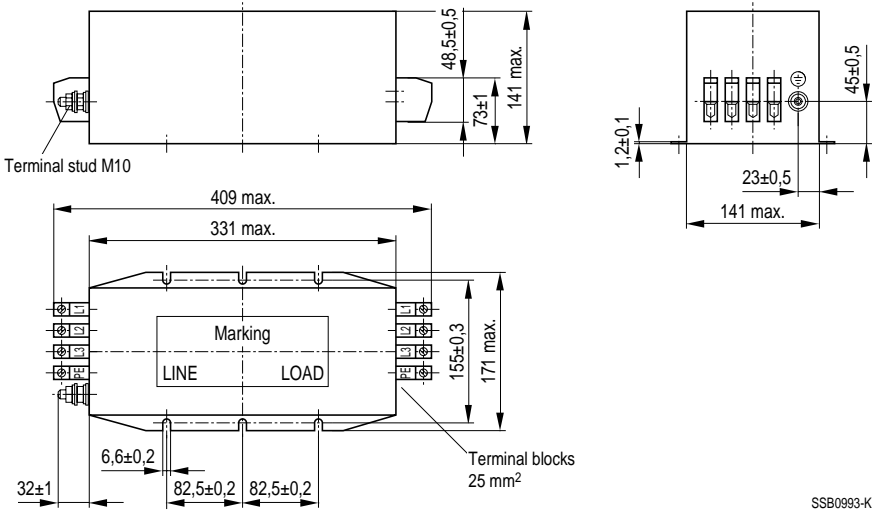
B84143-B8-R ... B84143-B16-R



B84143-B25-R ... B84143-B50-R



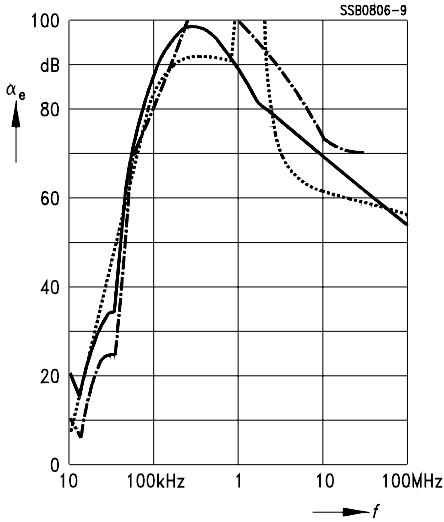
B84143-B80-R



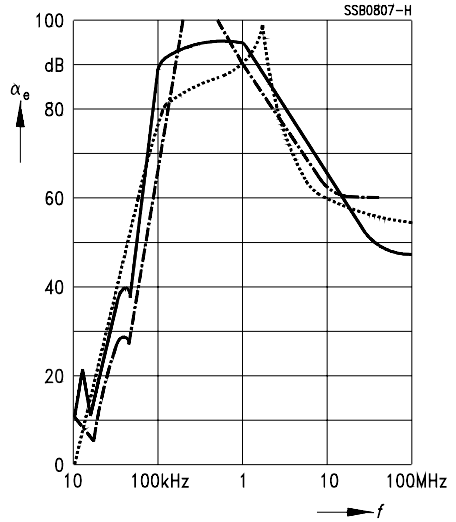
**Insertion loss** (typical values at  $Z = 50 \Omega$ )

- unsymmetrical, adjacent branches terminated
- ..... asymmetrical, all branches in parallel (common mode)
- - - - - symmetrical (differential mode)

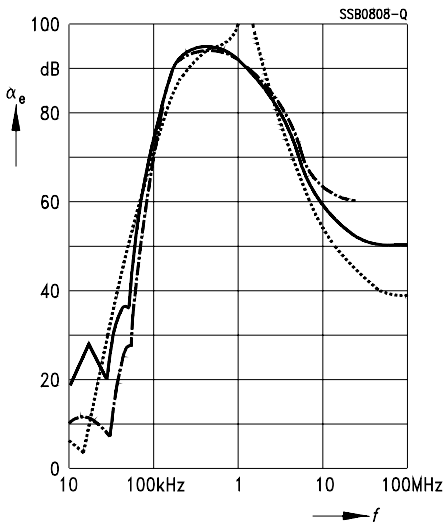
B84143-B8-R



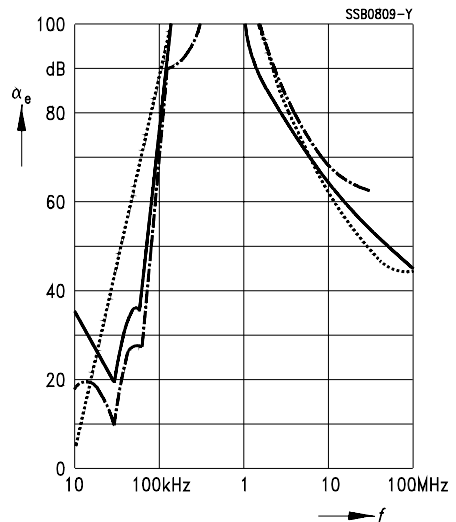
B84143-B12-R



B84143-B16-R



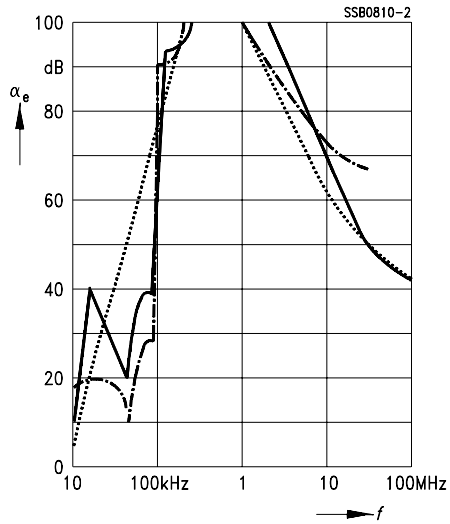
B84143-B25-R



**Insertion loss** (typical values at  $Z = 50 \Omega$ )

- unsymmetrical, adjacent branches terminated
- ..... asymmetrical, all branches in parallel (common mode)
- - - - - symmetrical (differential mode)

B84143-B36-R



B84143-B50-R  
B84143-B80-R

